

1. RULES – The regatta will be governed by the rules as defined in *The Racing Rules of Sailing*.

2. NOTICES TO COMPETITORS – Notices to competitors will be posted on the Official Notice Board located near the Race Entry Room.

3. CHANGES IN SAILING INSTRUCTION – Any change to the sailing instructions will be posted at least one and one half (1-1/2) hours prior to the first warning signal on the day it will take effect.

4. SIGNALS MADE ASHORE – Signals made ashore will be displayed on the flagpole at ABYC.

5. SCHEDULE OF RACES – The notice of race establishes the times of warning signals. The race committee reserves the right to modify the schedule by either written or oral notices.

6. ORDER OF STARTS – The order of starts for the first race will be displayed near the Race Entry Room. The race committee may change the starting order of classes for subsequent races.

7. CLASS FLAGS – Code flag W will be the class flag for ALL classes, with the starting class indicated by placards displayed on the Race Committee Signal Boat. Times will be taken from the flags.

8. COURSES

8.1 The racing area, courses and description of marks are listed on the reverse side. The starting class and the selected course number for that class will be displayed on the Race Committee Signal Boat.

8.2 For **multiple-lap courses**, a placard indicating the number of laps will be displayed at the same time as the course number.

8.3 On a **multiple-lap course**, signaled by a placard, a boat **NEED NOT** sail through the start or finishing line to begin a new lap.

8.4 The race committee may replace the leeward mark with a gate without notification to the competitors.

9. MARKS

Marks: A, B, C, D, F, G, H, I, J, V and X, are permanent marks in the approximate locations indicated on the reverse side.

W1 Inflatable yellow shape to windward of the starting area.

W2 Inflatable orange shape to windward of the starting area.

L1 Inflatable yellow shape to leeward of the weather mark W1.

L2 Inflatable orange shape to leeward of the weather mark W2.

R Inflatable yellow shape located on the port side of the course approximately in the location of a reaching or jibing mark.

10. THE START

10.1 Races will be started in accordance with rule 26 with the Warning signal given three (3) minutes before the starting signal. The Preparatory signal will be given two (2) minutes before the Starting signal. This changes rule 26.

10.2 The starting line will be between a staff displaying an orange flag on a race committee boat and a staff displaying an orange flag on the starting mark as shown.

10.3 At the discretion of the race committee, the starting line may be combined with the finishing line on the port side of the Race Committee Signal Boat.

10.4 The race committee may attempt to hail OCS boats. Failure of the committee to make the attempt or for the competitor to hear the hail will not be grounds for redress. This changes rule 62.1.

11. CHANGE OF THE NEXT LEG OF THE COURSE – To change the next leg of the course, the race committee will move the mark to the new location as soon as practicable.

12. THE FINISH

Finish 1 - The finishing line will be between a staff displaying an orange flag on the Committee Vessel and a staff displaying an orange flag on the finishing mark.

At the discretion of the race committee, the finish line may be moved to starboard side of the committee boat.

Finish 2 - The finishing line will be between two staffs displaying orange flags near the entrance to ABYC Basin.

13. PENALTY SYSTEM – Rule 44.1 is changed as described in US Sailing Prescription Appendix V1 Penalty at the Time of an Incident.

14. TIME LIMIT - Boats failing to finish within 15 minutes after the first boat sails the course and finishes will

be scored Time Limit Expired (TLE) and shall be scored points for the finishing place one more than the number of boats that finished. This changes rules 35, A4 and A5.

15. PROTESTS AND REQUESTS FOR REDRESS

15.1 Protest forms are available at the Protest Office. Protests and requests for redress shall be delivered there within one-half (1/2) hour of the Race Committee Signal Boat's reaching the dock. Protests will be heard as soon as practicable and in the approximate order in which they are received. Notices will be posted on the Protest Notice Board located near the Race Entry Room to inform competitors that they are parties to a protest or request for redress hearing. This will constitute official notice to all parties under rule 63.2.

15.2 If the race committee posts a list of boats scored OCS, ZFP, UFD or BFD on the official score board before the protest time limit, a request for redress based on such a posted score shall be made no later than one half hour after the protest time limit. This changes rule 62.2

16. SCORING

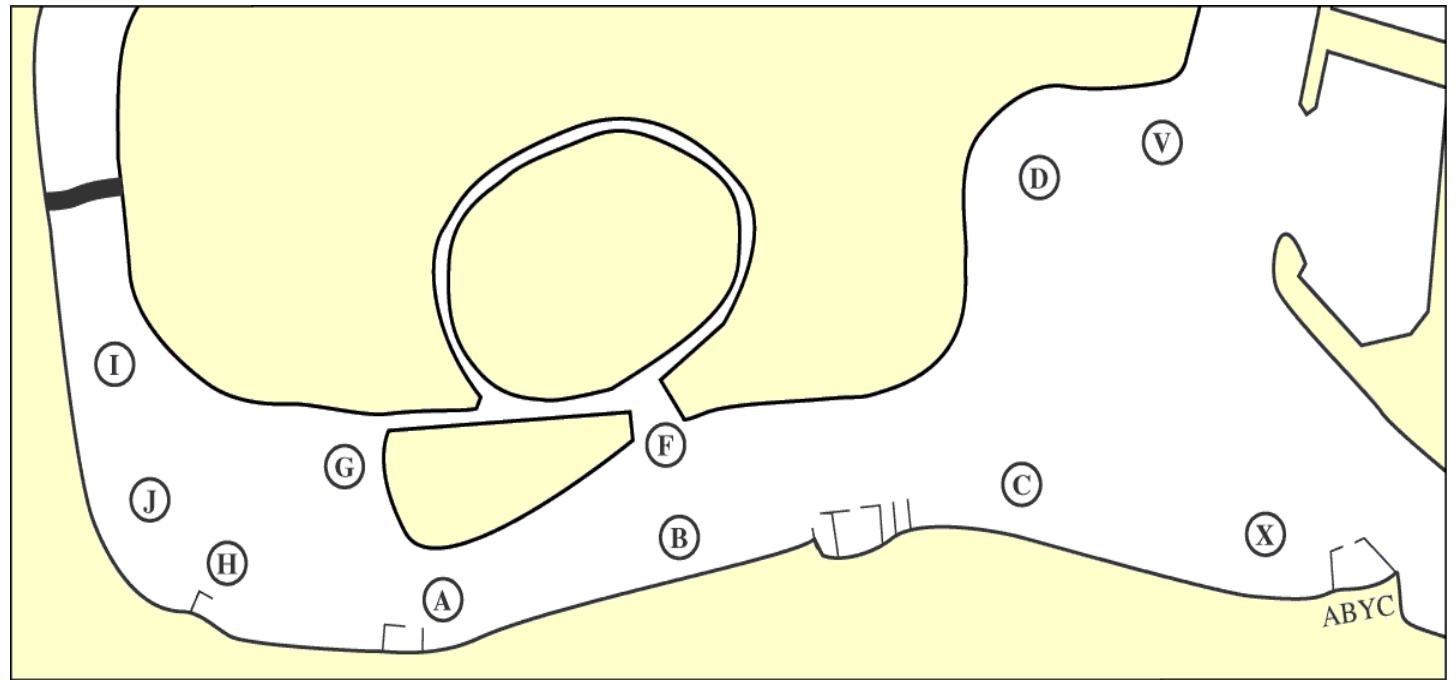
16.1 When fewer than five races have been completed, a boat's series score will be the total of her race scores.

16.2 When eleven or more races have been completed, a boat's series score will be the total of her race scores excluding her two worst scores.

17. SAFETY REGULATIONS – A boat that retires from a race is requested to notify the race committee as soon as possible. Boats leaving the racing area prior to the end of the day's racing are requested to notify a Race Committee Boat, or if that is not possible notify a regatta official or the yacht club office immediately upon arrival ashore. Every boat racing shall have a painter suitable for towing, at least one boat length long.

18. DISCLAIMER OF LIABILITY – Competitors participate in the regatta entirely at their own risk. See rule 4, Decision to Race. The organizing authority will not accept any liability for material damage or personal injury or death sustained in conjunction with or prior to, during, or after the regatta.

-  **AP** Race Postponed
-  **A** Under AP or N, No more racing today
-  **C** Change of Leg
-  **H** Under AP or N, more signals ashore
-  **I** Round-an-End rule
-  **L** Come within hail
-  **M** Missing mark
-  **N** Race abandoned
-  **P** Preparatory
-  **S** Shorten course
-  **U** Rule 30.3
-  **W** Class Flag (warning)
-  **X** Individual Recall
-  **Y** PFD required
-  **Z** 20% penalty rule
-  **1st Sub** General Recall



All marks will be rounded to PORT unless specified STARBOARD by an "s".

No.	Course
Moveable Mark Courses	
1	W1-L1-Finish1
2	W1-L-W1-L-Finish1
3	W1-L-W1-L-W1-L-Finish1
4	W1-R-L1-Finish1
5	W1-R-L1-W1-L1-Finish1
6	W1-L1-W1-R-L1-W1-L1-Finish1
Moveable Weather Mark Courses	
7	W2-D-Finish1
8	W2-V-D-Finish1
9	W2-V-D-W2-D-Finish1
10	W2-V-Finish1
11	W2- X- V-Finish1
12	W2- X- V- W2- V-Finish1
13	W2- X- V- F- B- V-Finish1
14	W2- X- V- F- A- V-Finish1

Fixed Mark Courses	
No.	Course
15	X- D-Finish1
16	X- V- D-Finish1
17	X- V- D- X- D-Finish1
18	X- V- F- B- X- D-Finish1
19	X- V- F- A- X- D-Finish1
20	C- V-Finish1
21	C- X- V-Finish1
22	C- X- V- C- V-Finish1
23	C- X- V- F- B- V-Finish1
24	C- X- V- F- A- V-Finish1
Downwind finish Courses	
25	W1-L1-W1 -Finish1
26	W1-L1-W1-L1-W1-Finish1
Specialty Courses	
27	Cs- Ds-Finish1
28	Xs- Cs- Ds-Finish1
29	Xs- F- B- Ds-Finish1
30	Cs- Vs-Finish1
31	Cs- Ds- Vs-Finish1
32	Cs- Ds- Vs- Cs- Vs-Finish1

No.	Course
33	Cs- F- B- Vs-Finish1
34	Cs- F- A- Vs-Finish1
35	Cs- F-B- Vs- Cs- Vs-Finish1
36	Cs- F-A- Vs- Cs- Vs-Finish1
77	Cs- I- J- Gs- H- B- F- A- Ds- X- Vs-Finish1
Platform Finish Courses	
<i>Upwind finish</i>	
39	W1-L1-Finish2
41	W1-L1-W1-L1-Finish2
42	W1-L1-W1-L1-W1-L1-Finish2
43	W2-L2-Finish2
44	W2-L2-W2-L2-Finish2
45	W2-L2-W2-L2-W2-L2-Finish2
<i>Reach finish</i>	
47	W1-L1-W1-Finish2
51	W1-L1-W1-L1-W1-Finish2
52	W2-L2-W2-Finish2
53	W2-L2-W2-L2-W2-Finish2
Reach Mark Courses	
54	W1-L1-W1-Rs-Finish2

No.	Course
55	W1-L1-W1-L1-W1-Rs-Finish2
56	W2-L2-W2-Rs-Finish2
57	W2-L2-W2-L2-W2-Rs-Finish2
If All Else Fails	
99	Special course, hailed from R/C

