

2018 Women's Snipe World Championship
Roy-Yamaguchi Memorial Trophy
August 14 - 19, 2018
Sail Newport
Newport, Rhode Island

SAILING INSTRUCTIONS

1 RULES

- 1.1 The regatta will be governed by the rules as defined in *The Racing Rules of Sailing* (RRS).
- 1.2 The following US Sailing prescriptions shall apply; Rule 60.3, 61.4, 67, 70.5 (a), and 76.1. This changes NOR 1.4. Applicable prescriptions will be in ATTACHMENT TWO of these sailing instructions.
- 1.3 The Rules of Conduct for Conducting National and International Championship and the trophy restrictions of the Roy-Yamaguchi trophy and Deed of Gift will apply. Any conflict arising between the Deed of Gift and the SCIRA Rules of Conduct shall be resolved by the application of the Rules of Conduct.
- 1.4 In case of conflict between the notice of race and the sailing instructions the sailing instructions shall prevail.
- 1.5 If there is a conflict between languages the English text will take precedence.
- 1.6 There will be an international jury as defined in RRS Appendix N.
- 1.7 The race committee will assign bow numbers to each participating boat. The numbers will be available at registration. These numbers shall be affixed to both the port and starboard sides in the following manner; The leading edge of the forward number shall be 8 inches aft of the stem and 1 inch below the deck. The leading edge of the aft number shall be 6 inches aft of the aft edge of the forward number and 1 inch below the deck. All bow numbers shall be on a contrasting background.

2 NOTICES TO COMPETITORS

- 2.1 Notices to competitors will be posted on the official notice board located in the 11th Hour Great Room at the New Sail Newport Building.

3 CHANGES TO SAILING INSTRUCTIONS

- 3.1 Any change to the sailing instructions will be posted before 8:00 am on the day it will take effect, except that any change to the schedule of races will be posted by 6:00 pm on the day before it will take effect.
- 3.2 Any change or amendment to the sailing instructions shall be approved by the SCIRA representative.

4 SIGNALS MADE ASHORE

- 4.1 Signals made ashore will be displayed on flag pole at New Sail Newport Building.
- 4.2 When flag AP is displayed ashore, '1 minute' is replaced with 'not less than 60 minutes' for RACE SIGNAL AP.

5 SCHEDULE OF RACES

Date	Time of first Warning Signal	Event
Wednesday, August 15	2:00 pm	Practice Race
Thursday, August 16	11:30 am	Skippers and support persons meeting
	2:00 pm	First Race
Friday, August 17	11:am	Racing
Saturday, August 18	11:am	Racing
Sunday, August 19	11:am	Racing
	To be determined	Awards

- 5.2 The competitors and support persons meeting will be at 11:30 am on August 16 in the New Sail Newport Building.
- 5.3 The race committee will attempt to complete nine (9) races.
- 5.4 No more than three (3) races shall be sailed per day.
- 5.5 On Sunday, August 19, no warning signal shall be made after 2:00 pm.
- 5.6 To alert boats that a race will soon begin, a staff displaying an orange flag will be displayed with one sound five minutes before a warning signal is made.

6 CLASS FLAG

The class flag will be the Snipe class flag, a red Snipe on a white background.

7 RACING AREA

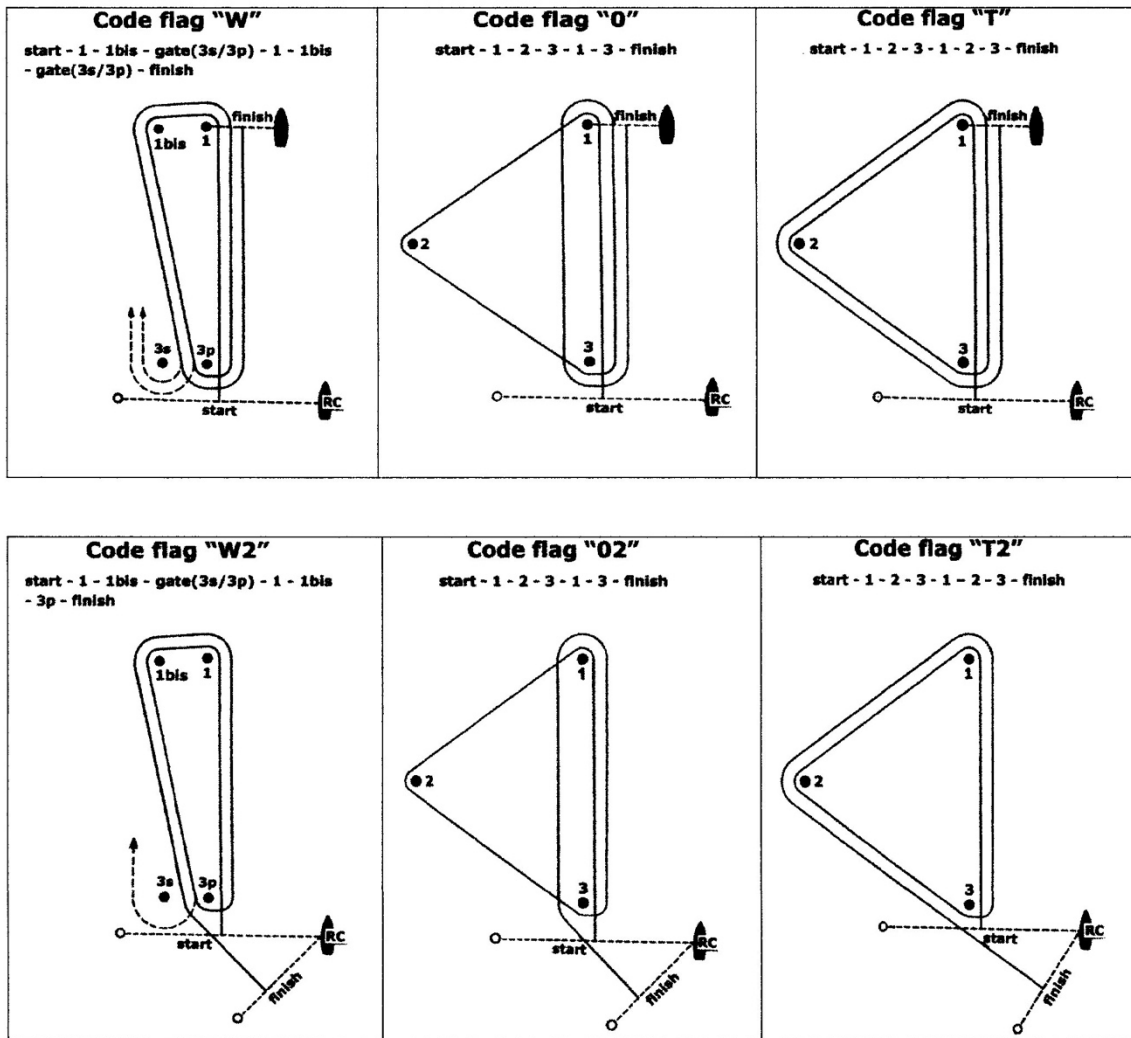
ATTACHMENT ONE shows the location of the racing area in Potters Cove, North of the Newport Pell Bridge in Narragansett Bay.

8 WEATHER LIMITATION

8.1 The permissible wind velocity range at the start and on the course will be no less than five (5) knots and not exceed eighteen (18) knots. The race committee will abandon a race with persistent winds outside of these limitations in accordance with RRS 32.1(d).

9 THE COURSES

9.1 The diagrams below show the courses, including the approximate angles between legs, and the order in which marks are to be passed. All course marks, except gates, shall be left to port.



9.2 Course signals "W", "T", "O", "W2", "T2" or "O2" shall be hoisted one minute before the warning signal and accompanied by one sound. The signal will remain displayed for ten minutes after the start.

9.3 No later than the warning signal, the race committee signal vessel will display the approximate compass bearing of the first leg.

9.4 The number of legs in a race may be reduced, but at least two (2) windward legs of the race shall be completed. This changes RRS 32.2. This change shall be approved by the SCIRA representative.

9.5 If there is a sustained wind variation of 20 degrees or more from the posted bearing during the first LEG of a race the race shall be abandoned and re-sailed, or abandoned. This change RRS 32.1.

9.6 If there is a sustained wind variation of 40 degrees or more from the posted bearing during the first LAP the race shall be abandoned and re-sailed, or abandoned. For the purpose of this rule a lap means the rounding of mark 3 or passing through gate 3s-3p for the first time. This changes RRS 32.1.

10 MARKS

10.1 Marks 1, 1bis, 2, 3, 3s and 3p will be orange inflatable marks.

10.2 New marks, as provided in instruction 13.1, will be yellow inflatable marks.

- 10.3 Offset mark 1bis will be a light orange inflatable “Bema Ball”.
- 10.4 A race committee vessel signalling a change of a leg of the course is a mark as defined in SI 12.2.
- 10.5 If one of the gate marks 3s-3p is not in place or 1bis, is not replaced per RRS 34, the single mark shall be left to port.

11 THE START

- 11.1 Races will be started by using RRS 26.
- 11.2 The starting line will be between a staff displaying an orange flag on the race committee signal vessel at the starboard end and a staff displaying an orange flag on a race committee vessel at the port end.
- 11.3 A boat starting later than 5 minutes after her starting signal will be scored Did Not Start (DNS) without a hearing. This changes RRS Appendices A4 and A5.
- 11.4 RRS 30.4 (‘Black Flag Rule’) will not be used.
- 11.5 The race committee, after the finish of a race and before the warning signal of a subsequent race, will attempt to post on the race committee signal vessel a list of boats scored OCS, UFD, or ZPF. The failure of posting or incomplete or incorrect posting will not be grounds for redress. This changes RRS 62.1(a).

12 CHANGE OF THE NEXT LEG OF THE COURSE

- 12.1 Changes to the next leg of the course will be made using RRS 33. To change the next leg of the course, the race committee will lay a new mark (or move the finishing line) and remove the original mark as soon as practicable. When in a subsequent change a new mark is replaced, it will be replaced by an original mark.
- 12.2 Except at a gate, boats shall pass between the race committee vessel signalling the change of the next leg and the nearby mark, leaving the mark to port and the race committee vessel to starboard. This changes RRS 28.1.
- 12.3 After the completion of the first windward leg of the race the remaining legs may be increased or decreased by not more than 30% of the original length. This changes RRS 33. The SCIRA representative shall be consulted on any change of course which affects its length.
- 12.4 If mark 1 will be changed for courses “W” or “W2”, mark 1bis (offset) will no longer be a mark of the course.

13 THE FINISH

- 13.1 The finish line will be between staffs displaying orange flags on two race committee vessels unless the course is shortened in accordance with RRS 32.2.
- 13.2 Flag A displayed with no sound, while boats are finishing means, ‘No more racing today’.
- 13.3 A boat intending to retire and be scored RET shall report its intent in writing to the jury.

14 PENALTY SYSTEM

- 14.1 RRS Appendix P will apply.
- 14.2 A competitor performing a one or two turn(s) penalty shall report promptly to the race committee after finishing that race.

15 TIME LIMITS

- 15.1 The race committee will attempt to manage races for 60 minutes duration for the first boat to finish. A shorter or longer time to complete the race will not be grounds for requesting redress. This changes RRS 62.1(a).
- 15.2 The time limit for the first boat to complete the first lap is 30 minutes from the start. If the first boat fails to complete the first lap within this time limit the race committee shall abandon the race. RRS 32.1(d). For the purpose of this rule a lap means the passing through gate 3s/3p, or rounding mark 3, for the first time.
- 15.3 The time limit for the first boat to finish the race will be 1 hour, 30 minutes. Any boat finishing more than 30 minutes after the first boat finishes or failing to finish within 2 hours from the start, whichever is shorter, shall be scored Did Not Finish (DNF). This changes RRS 35, A4 and A5.

16 PROTESTS AND REQUESTS FOR REDRESS

- 16.1 There shall be no appeal from the decisions of the international jury. RRS 70.5.
- 16.2 Protest forms will be available at the Kickamutt Room in the New Sail Newport building. Protests and requests for redress or reopening of a hearing will be delivered there within the time limit.
- 16.3 The protest time limit is 90 minutes after the last boat has finished the last race of the day or the race committee vessel signals no more racing today, whichever is later.
- 16.4 Notices will be posted no later than 15 minutes after the protest time limit to inform competitors of hearings in which they are parties or named as witnesses. Hearings will be held in the Kickamutt room in the New Sail Newport building.
- 16.5 Notices of actions taken by the race committee or jury will be posted on the official notice board as soon as practicable after the finish boat docks, including breaking RRS 29, 30.1, 30.2, 30.3, and 42.
- 16.6 Any boat intending to file a request for redress alleging that an action or omission by the race committee has made her finishing position or series score significantly worse shall notify the race committee as soon as practicable after finishing that race. This changes RRS 62.2. This instruction does not apply to request for redress resulting from scoring penalties applied without a hearing by the race committee or jury, or a request for redress for an alleged scoring error.

- 16.8 Breaking SI 18, 19, 20, 21, 23, and NOR 3.4 will not be grounds for protest by a boat, but are subject to protest by the jury which may include disqualification or a discretionary penalty. This changes RRS 60.1(a). Penalties by the jury for **Support Persons** breaking RRS 3.1(b) may include denial of regatta event access and participation. The penalty for breaking SI 18, 21, and NOR 3.4 will be a 5% scoring penalty for the nearest race completed by the boat breaking the rule, but not worse than the number of points corresponding to DSQ. Penalties for breaking Snipe class rules, or SI 20, may also be less than disqualification. The scoring abbreviation for a discretionary penalty will be DPI.
- 16.9 On the last scheduled day of racing a request for reopening a hearing shall be delivered:
(a) Within the protest time limit if the requesting party was informed of the decision on the previous day;
(b) No later than 30 minutes after the requesting party was informed of the decision on that day.
This changes RRS 66.
- 16.10 On the last scheduled day of racing a request for redress based on a jury decision shall be delivered no later than 30 minutes after the decision was posted. This changes RRS 62.2.
- 16.11 SCIRA reserves for itself the right and responsibility to decide issues of eligibility, measurement and equipment. SCIRA may refer an issue to the international jury for advice.
- 16.12 Team racing shall not be tolerated. If the race committee acting under RRS 32.1(e) or the jury determines that team racing tactics may have influenced the outcome of a race the jury shall order that race be abandoned and, if possible, re-sailed excluding the participation of the involved boats. This changes RRS 36. If the race is not re-sailed the involved boats shall be subject to disqualification under RRS 2.
- 16.13 For the purpose of RRS 64.3(b) the “authority responsible” is the designated measurer for the event.
- 16.14 The jury shall order a race abandoned if during a redress hearing they conclude that the race committee did not follow sailing instructions 8.1, 9.5, 9.6, or 12.3. This changes RRS 64.2.

17 SCORING

- 17.1 Three (3) races are required to be completed to constitute a series.
- 17.2 (a) When fewer than five (5) have been completed, a boat’s series score will be the total of her race scores.
(b) When more than five (5) races have been completed a boat’s series score will be the total of her race scores excluding her worst excludable score.
- 17.3 A boat intending to retire and be scored RET shall report its intent in writing to the jury.

18 SAFETY REGULATIONS

- 18.1 Before the warning signal of the first race of the day for a boat, it shall sail past the stern of the race committee signal boat on starboard tack and hail bow number until acknowledged by the committee. Boats will not be acknowledged during a starting sequence. The signal vessel will display a blue race committee flag.
- 18.2 Boats departing the race course without finishing shall inform a race committee boat as soon as practicable, and if not report in immediately when ashore to the regatta office. Breaking this rule may result in a discretionary penalty by the protest committee. This changes RRS 60.3 and A5.

19 REPLACEMENT OF CREW OR EQUIPMENT

- 19.1 The same crew shall race in all races, except for reasons acceptable to the race committee. Requests for a change of crew shall be made as soon as practicable and the reason for substitution submitted in writing to the Principal Race Officer for written approval or denial. Once a crew has been excused, she may not participate for the balance of the series.
- 19.2 The same skipper shall sail all races and can only be replaced after the first race if medically incapacitated. If the skipper is replaced following the first completed race, the boat will be scored DNC for that race.
- 19.3 Substitution of damaged or lost equipment will not be allowed unless authorized in writing by the Principal Race Officer.

20 EQUIPMENT AND MEASUREMENT CHECKS

A boat or equipment may be inspected at any time for compliance with the class rules and sailing instructions. On the water, a boat can be instructed by a race committee equipment inspector or measurer to proceed immediately to a designated area for inspection.

21 EVENT ADVERTISING

Boats shall conform to World Sailing Regulation 20.4.1. Advertising Code, and may only display event advertising approved by the organizing authority.

22 RIGHTS TO USE NAME AND LIKENESS

By participating in this event, competitors automatically grant to the SCIRA, organizing authority and the event sponsors the right, in perpetuity, to make, use, and show, at their discretion, any photography, audio and video recording, and other reproductions of them made at the venue or on the water from the time of their arrival at the venue, until their final departure, without compensation.

23 OFFICIAL VESSELS

Official vessels will be identified by blue race committee flags.

24 SUPPORT BOATS AND PERSONS

24.1 At the preparatory signal, support boats must be at least 50 meters below the starting line and its extensions. After the starting signal support boats may follow the fleet, but only on the port side of the course and at a minimum 50 meters from any competitor or mark of the course.

24.2 Support boats will promptly clear the starting area and support persons may not communicate with competitors after the hoisting of the staff displaying the orange line flag as described in SI 5.6 until after the competitor finishes the race.

24.3 Support persons shall register at the regatta office. Support boats may required to display identification provided by the organizing authority.

24.4 All support vessels shall monitor VHF 79.

25 RADIO COMMUNICATIONS

A boat shall neither make nor receive radio transmissions or communications while racing nor receive radio communications, except in an emergency. This restriction also applies to mobile telephones.

26 TRASH DISPOSAL

RRS 55 will be strictly enforced and breaking this rule may result in a discretionary penalty. Trash may be placed aboard support boats and race committee vessels.

27 PRIZES

Prizes shall be awarded as provided in Notice of Race 13.

28 DISCLAIMER OF LIABILITY

Competitors participate in the regatta entirely at their own risk, see RRS 4, DECISION TO RACE. The organizing authority will not accept any liability for material damage or personal injury or death sustained in conjunction with, prior to, during, or after the regatta.

29 INSURANCE

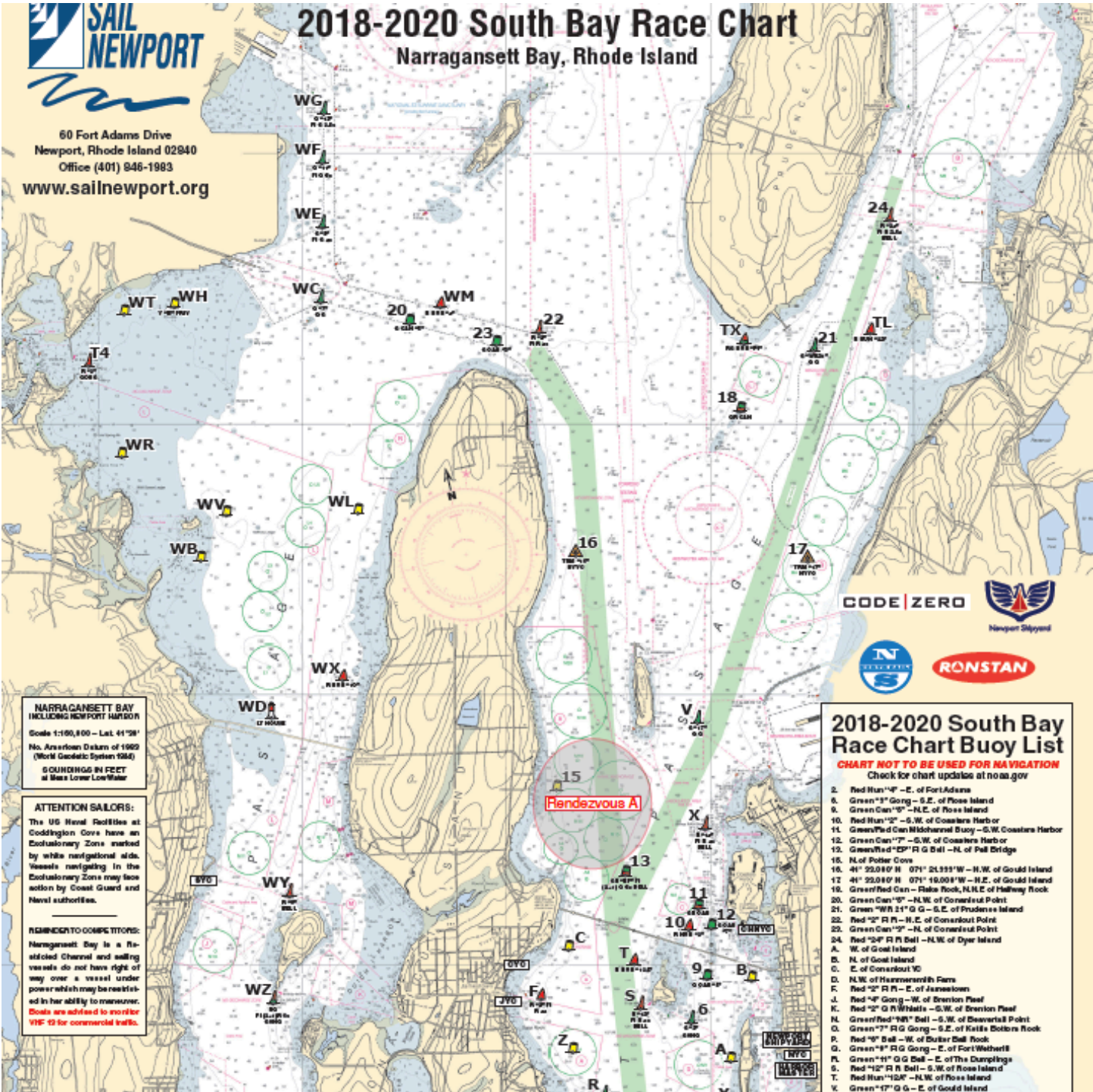
Each participating boat shall be insured with valid third-party liability insurance with minimum coverage of \$300,000.00 per incident. Skippers should be required to provide documentation on request.

ATTACHMENT 1

2018-2020 South Bay Race Chart Narragansett Bay, Rhode Island



60 Fort Adams Drive
Newport, Rhode Island 02840
Office (401) 846-1983
www.sailnewport.org



NARRAGANSETT BAY INCLUDING NEWPORT HARBOR
Scale 1:100,000 - Lat. 41°58' N. American Datum of 1983 (World Geodetic System 1984)
SOUNDINGS IN FEET at Mean Lower Low Water

ATTENTION SAILORS:
The US Naval Facilities at Coddington Cove have an Exclusionary Zone marked by white navigational aids. Vessels navigating in the Exclusionary Zone may face action by Coast Guard and Naval authorities.

REMNANT TO COMPETITION:
Narragansett Bay is a Restricted Channel and sailing vessels do not have right of way over a vessel under power which may be restricted in her ability to maneuver. Boats are advised to monitor VHF-13 for commercial traffic.

2018-2020 South Bay Race Chart Buoy List

CHART NOT TO BE USED FOR NAVIGATION
Check for chart updates at noaa.gov

2. Red Nun*4 - E. of Fort Adams
5. Green*11 Gong - S.E. of Ross Island
9. Green Can*9 - N.E. of Ross Island
10. Red Nun*2 - S.W. of Coasters Harbor
11. Green/Red Can Midchannel Buoy - S.W. Coasters Harbor
12. Green Can*7 - S.W. of Coasters Harbor
13. Green/Red*25 R G Ball - N. of Pull Bridge
18. N. of Potter Cove
16. 41° 52.010' N 071° 21.151' W - N.W. of Gould Island
17. 41° 52.010' N 071° 19.000' W - N.E. of Gould Island
19. Green/Red Can - Rake Rock, N.N.E. of Halfway Rock
20. Green Can*10 - N.W. of Conanicut Point
21. Green *WR 11* G - S.E. of Prudence Island
22. Red *2* R R - N.E. of Conanicut Point
23. Green Can*12 - N. of Conanicut Point
24. Red *24* R R Ball - N.W. of Dyer Island
- A. W. of Gould Island
- B. N. of Gould Island
- C. E. of Conanicut IC
- D. N.W. of Narragansett Ferns
- F. Red *2* R R - E. of Janssion
- J. Red *4* Gong - W. of Erenson Reef
- K. Red *2* G R Whales - S.W. of Erenson Reef
- N. Green/Red*18* Ball - S.W. of Eversall Point
- O. Green *7* R G Gong - S.E. of Kells Bottoms Rock
- P. Red *6* Ball - W. of Bulker Ball Rock
- Q. Green *8* R G Gong - E. of Fort Wetherill
- R. Green *41* G G Ball - E. of The Dumpings
- S. Red *12* R R Ball - S.W. of Ross Island
- T. Red Nun*12K - N.W. of Ross Island
- V. Green*17* G G - E. of Gould Island

2018 Women's Snipe World Championship
Roy-Yamaguchi Memorial Trophy
August 14 - 19, 2018
Sail Newport, Newport, Rhode Island

ATTACHMENT TWO

Rule 60.3 US Sailing prescribes that rule 60.3(b) is changed to:

(b) request redress for a boat or call a hearing to consider redress; or

Rule 61.4 US Sailing prescribes that no fees shall be charged for protests or requests for redress.

Rule 67 US Sailing prescribes that:

1. (a) A boat that retires from a race or accepts a penalty does not, by that action alone, admit liability for damages.
2. (b) A protest committee shall find facts and make decisions only in compliance with the rules. No protest committee or US Sailing appeal authority shall adjudicate any claim for damages. Such a claim is subject to the jurisdiction of the courts.
3. (c) A basic purpose of the rules is to prevent contact between boats. By participating in an event governed by the rules, a boat agrees that responsibility for damages arising from any breach of the rules shall be based on fault as determined by application of the rules, and that she shall not be governed by the legal doctrine of 'assumption of risk' for monetary damages resulting from contact with other boats.

Rule 70.5 (a) US Sailing prescribes that its approval is required.

Rule 76.1 US Sailing prescribes that an organizing authority or race committee shall not reject or cancel the entry of a boat or exclude a competitor eligible under the notice of race and sailing instructions for an arbitrary or capricious reason or for reason of race, color, religion, national origin, gender, sexual orientation, or age.

David Brennan

Principal Race Officer