



**Cabrillo II**  
PHRF and One Design Fleets  
San Diego, California  
Saturday, February 3<sup>rd</sup>, 2018

## SAILING INSTRUCTIONS

Principal Race Officer

Steven Bakalis

(858) 220-2677

---

1. RULES

- 1.1. The Racing Rules of Sailing (RRS) for 2017-2020 will govern the series, including US SAILING Prescriptions, PHRF Southern California and San Diego Class Rules and these Sailing Instructions.
- 1.2. The PHRF MIR rule is **not** in effect for this series.
- 1.3. **NAVAL PROTECTION ZONE:** The Naval Protection Zone is a 500 yard regulated area of water surrounding all US Naval Vessels which are greater than 100 feet in length. All vessels within 500 yards of a US Naval Vessel greater than 100 feet in length shall operate at the minimum speed necessary to maintain safe course and speed and shall proceed as directed by any official patrol. **NO VESSEL IS ALLOWED WITHIN 100 YARDS OF A LARGE US NAVAL VESSEL.** These zones are permanently in effect. (33 C.F.R. 165.2030)
- 1.4. RRS rule 55 is changed by adding the following sentence to the rule: "However, discarding biodegradable bands when setting a sail is permitted." Racers remain responsible for compliance with all applicable state and federal laws. Federal law defines marine debris as "any persistent solid material that is manufactured or processed and directly or indirectly, intentionally or unintentionally, disposed of or abandoned into the marine environment" (33 USC 1956).

2. ENTRIES

- 2.1. Boats that have completed registration are eligible to race.
- 2.2. Entry for Cabrillo II shall be made on-line via the SWYC website no later than **1700 hours Thursday, February 1<sup>st</sup>, 2018.**
- 2.3. A minimum of four yachts is needed to score a one design Fleet. Any one design fleet wishing to be scored as a fleet must provide the Race Committee with notice as in accordance with the Notice of Race for this Series (NoR 3.2 pertains).

3. SAFETY

- 3.1. International Regulations for Preventing Collisions at Sea or government right-of-way rules shall replace Part 2 of RRS between sunset and sunrise. Attention is called to RRS 48 concerning fog signals and lights.
- 3.2. It is the sole responsibility of the skipper of each yacht to decide whether or not to start and/or continue to race.
- 3.3. The safety of a boat and her crew is the sole and inescapable responsibility of the "person in charge", as per RRS 46, who shall ensure that the boat is seaworthy and sailed by an experienced crew with sufficient ability and experience to face bad weather. The person in charge shall be satisfied as to the soundness of hull, spars, rigging, sails, and all gear. The person in charge

- shall ensure that all safety equipment is at all times properly maintained and safely stowed and that the crew knows where it is kept and how it is used.
- 3.4. US **Coastal** Safety Equipment is required for Cabrillo I, II, III races in addition to all required USCG boating requirements.
  - 3.5. US **Nearshore** Safety Equipment is required for Cabrillo IV race in addition to all required USCG boating requirements.
  - 3.6. US Coastal and Near Shore Requirements can be found here:  
[http://www.ussailing.org/wp-content/uploads/DARoot/Offshore/SAS/US\\_SER\\_2017.0.pdf](http://www.ussailing.org/wp-content/uploads/DARoot/Offshore/SAS/US_SER_2017.0.pdf)
  - 3.7. The US Safety Equipment Requirements (SER) are modified for the following sections:
    - 3.7.1. SER 2.5.1- Primary Operating Bilge Pump – Required. Currently installed bilge pump/switching/drainage/capacity satisfactory.
    - 3.7.2. SER 2.4.4 – Lifelines - Required. Existing factory installation is satisfactory.
    - 3.7.3. SER 3.1.2 – PFD Crotch/Leg Straps - Required. No Competitor may protest a boat for infringing this rule. This modifies RRS 60.1.
    - 3.7.4. SER 3.1.4 – Safety Harness & Tether – Required. No Competitor may protest a boat for infringing this rule. This modifies RRS 60.1.
    - 3.7.5. SER 3.6.2, 3.6.6 – Flares - All yachts must meet the USCG flare requirements (SOLAS certification recommended).
    - 3.7.6. SER 3.8.1 – VHF marine radio & Handheld Backup VHF with DCS Capability - Required. No Competitor may protest a boat for infringing this rule. This modifies RRS 60.1.
    - 3.7.7. SER 3.16.2 – EPIRB/PLB - Not required but recommended.
    - 3.7.8. SER 3.31 – All Specified Gear Identification - Not required but recommended.
    - 3.7.9. SER 3.33 – Boats shall have a means to reduce main sail area - (Currently used method & reduction percentage satisfactory).
    - 3.7.10. SER 4.3.2 – Safety at Sea training – Not required but highly recommended. The Organizing Authority strongly recommends that all competitors take the opportunity to attend an upcoming Seminar:  
<http://www.ussailing.org/education/safety-at-sea/>.
  - 3.8. Each participating yacht shall carry at least 1.5 times the minimum fuel it requires to return, at maximum rated engine speed, from the furthest point on the course to the nearest emergency services.
  - 3.9. Each participating yacht shall have a minimum of three sailors aboard for each race.
4. U.S. CUSTOMS AND BORDER PROTECTION REQUIREMENTS
- 4.1 Customs clearance is not required by yachts of American registry that are properly entered in the race, do not terminate the voyage in Mexican waters, and do not make contact with another vessel while in Mexican waters. Such vessels are not considered by U.S. Customs to have left the United States.
  - 4.2 Yachts not complying with 4.1 above must comply with U.S. Customs procedures for arrival from a foreign port on their own.
  - 4.3 The UN Convention on the Law of the Sea (UNCLOS), Section 3 addresses “innocent passage”.  
[http://www.un.org/Depts/los/convention\\_agreements/texts/unclos/closcont.htm](http://www.un.org/Depts/los/convention_agreements/texts/unclos/closcont.htm)

- 4.4 Yachts not complying with the definition of “innocent passage” in UNCLOS Article 19 while sailing in Mexican waters must comply with Mexican procedures and regulations on their own.
5. CHECK-IN
- 5.1. Eligible yachts complete their entry by checking in with the RC boat prior to the first warning signal. Yachts checking in shall pass the RC boat to starboard and hail with sail number and class. Check-in will be complete only when RC boat responds with that information. **THERE WILL BE NO RADIO CHECK-IN.**
6. NOTICE TO COMPETITORS
- 6.1. Notices to competitors will be posted on the RC Bulletin Board adjacent to the SWYC office and on the SWYC web site no later than 0900 hours on the day of the event.
7. CHANGES IN SAILING INSTRUCTIONS
- 7.1. Ashore: Any change in the Sailing Instructions will be posted on the above bulletin board and on the SWYC web site prior to 0900 hours on the day of the event.
- 7.2. Afloat: Any change in the Sailing Instructions made afloat will be communicated via VHF Channel 68 and/or loud hailer.
- 7.3. The Race Committee will monitor and communicate on VHF Channel 68 when on station.
8. SCHEDULE
- 8.1. The race is scheduled for Saturday, February 3<sup>rd</sup>, 2018. **Time of the first warning will be 1155 hours.**
9. CLASSES, CLASS FLAGS AND STARTING ORDER
- 9.1. Below are class assignments and starting order, based on PHRF San Diego RLC Class breaks:
- | <u>CLASS</u> | <u>CLASS FLAG</u> | <u>CLASS BREAK</u>  |
|--------------|-------------------|---|
| PHRF 5       | Pennant 5         | + 138 through + 999   |
| PHRF 4       | Pennant 4         | + 90 through +137 plus LOA < 42'  |
| PHRF 3       | Pennant 3         | +1 through +75 where PF < 4; +76 through +89;<br><b>and</b> +90 through +137 plus LOA = or > 42' where PF < 4.0 |
| PHRF 2       | Pennant 2         | +1 through +75 where PF = or > 4.0  |
| PHRF 1       | Pennant 1         | -999 through 0  |
| PHRF 8       | Pennant 8         | Multi-Hull all ratings  |
- 9.2. The race will be started in accordance with RRS 26.
- 9.3. The RC will signal the next class to start using numeral pennants. Numeral pennants will be displayed from the yacht's backstay. Boats without a backstay shall display their pennants in a prominent manner on the stern.
10. RACING AREA
- 10.1. The starting area will be approximately .2 NM off Zuniga Jetty End bearing 070° as shown in Attachment A. (approximate position: N 32° 40' 02.5" W 117° 13' 06.3" / N 32° 40.04' W 117° 13.11')
- 10.2. The racing area will be Zuniga Jetty, around Sugarloaf Rock, and finish approximately .2 NM off Zuniga Jetty end bearing 070°, as shown in Attachment A. (approximate position: N 32° 40' 02.5" W 117° 13' 06.3" / N 32° 40.04' W 117° 13.11')

**11. PRIMARY COURSE**

11.1. All Classes will sail the same course. The course will be designated by the Race Committee at the Starting Line, either by displaying an "A" or a "B" on the Course Board prior to the first warning of the first start. The RC will also attempt to hail with the selected course over VHF Channel 68 prior to the first warning of the first start. Failure of the RC to hail or failure of any yacht to hear a hail will not be grounds for redress. Courses are described below: **See Attachment A.**

**11.1.1. Course "A"**

**Start (.2 NM off Zuniga Jetty end bearing 070°)**

**Leave Coronado Islands to Port**

**Leave Sugarloaf Rock to Port**

**Finish (.2 NM off Zuniga Jetty end bearing 070°)**

NOTE 1: Distance for handicap purposes is 65.5 nautical miles.

NOTE 2: Chart Reference: NGA 18765 and 18073.

\* No change of course shall be made after the start.

**MARKS**

**Coronado Islands**

**Sugarloaf Rock**

**11.1.2. Course "B"**

**Start (.2 NM off Zuniga Jetty end bearing 070°)**

**Leave Sugarloaf Rock to Port**

**Finish (.2 NM off Zuniga Jetty end bearing 070°)**

NOTE 1: Distance for handicap purposes is 61.7 nautical miles.

NOTE 2: Chart Reference: NGA 18765 and 18073.

\*No change of course shall be made after the start.

**MARK**

**Sugarloaf Rock**

**12. ALTERNATE COURSE**

12.1 In case of inclement weather, all classes will sail the same alternate course. **See Attachment B.**

**Start vicinity SD Bay Buoy 17**

**Leave FM 19 to Starboard**

**Leave Coronado Bay Bridge Stanchion 19 to Starboard**

**Leave SD Bay Buoy 19 to Port**

**Leave SD Bay Buoy 26 to Starboard**

**Leave SD Bay Buoy 26a to Starboard**

**Round SD Bay Buoy 38 to Starboard**

**Leave SD Bay Buoy 26 to Port**

**Leave SD Bay Buoy 26a to Port**

**Leave FM 19 to Port**

**Leave SD Bay Buoy 12 to Starboard**

**Finish vicinity SD Bay Buoy 17**

NOTE 1: Distance for handicap purposes is 28.2 nautical miles.

## 13. START

- 13.1. The race will be started in accordance with RRC 26, in the class order posted on the SWYC web site.
- 13.2. The starting line will be between a staff displaying an orange flag on the RC boat at the starboard end and a yellow tetrahedron mark at the port end.
- 13.3. A distance buoy may be streamed aft of the RC boat and if present shall be considered part of the RC boat.
- 13.4. The warning signal for each class will be five (5) minutes prior to its start.
- 13.5. Yachts whose warning signal has not been made shall avoid the starting area.
- 13.6. **The RC may eliminate or combine starts without prior notice, depending on entries. Class pennants will indicate combined starts. The RC may announce any such changes on VHF Channel 68.**

## 14. RECALLS

- 14.1. General and Individual recalls shall be signaled in accordance with RRS 29.1. The RC may attempt to notify premature starters either by loud hailer or VHF Channel 68. Failure of a yacht to hear a hail **OR** failure of the RC to hail shall not be grounds for redress. It is the responsibility of each yacht to start properly.
- 14.2. Premature starters failing to return and start properly will be penalized by having one hour added to their corrected times. This alters RRS 29.1.

## 15. WITHDRAWAL

- 15.1. A yacht that retires from the race **must notify the RC** before leaving the course or call the RC Principal Race Officer at the number provided above. Failure to do this shall result in disqualification from this race and possible rejection of entry for subsequent races.

## 16. FINISH

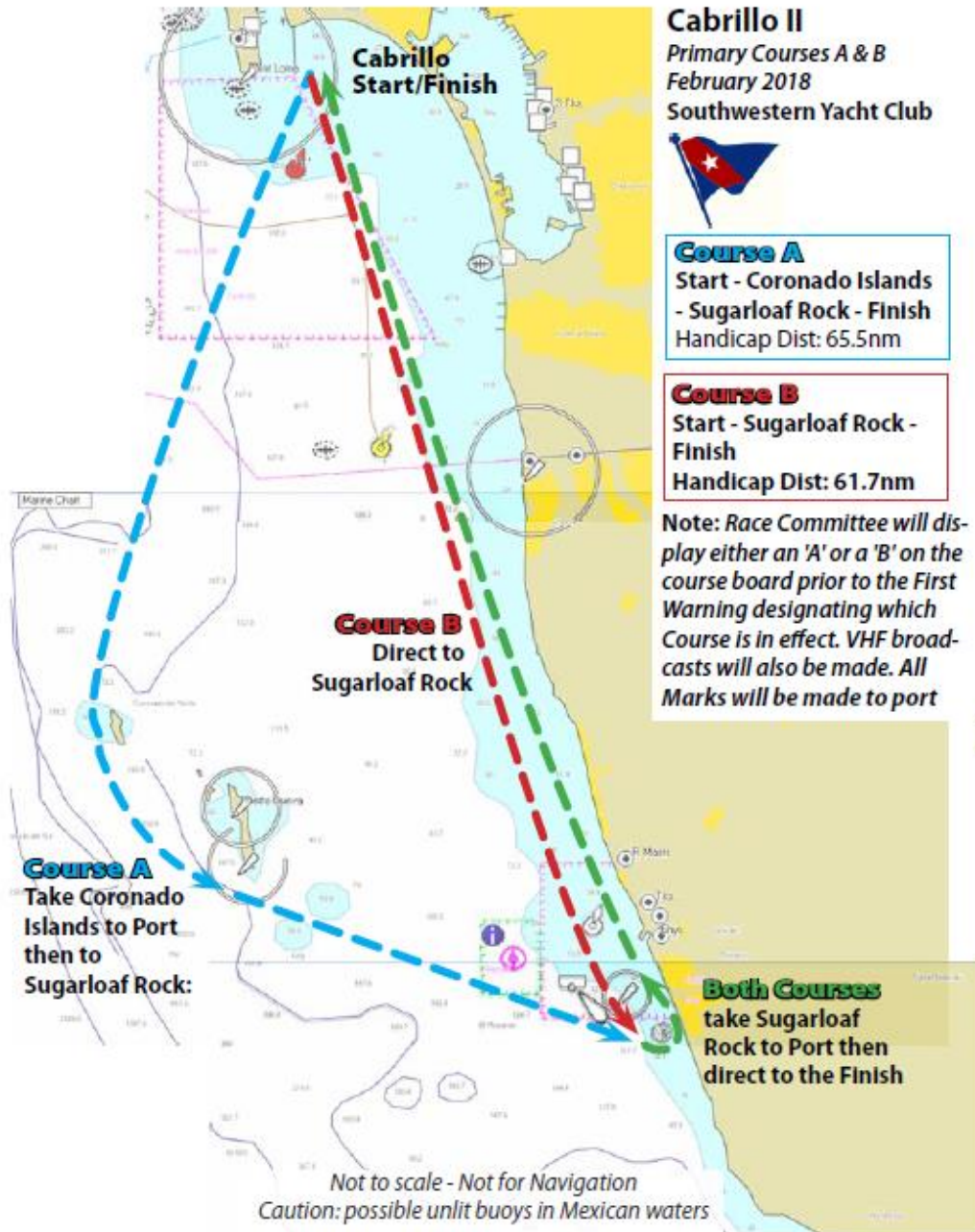
- 16.1. When the lead yacht of the leading class is within two hours of finishing, she is requested to so advise the RC via VHF Channel 68.
- 16.2. The finishing area will be approximately .2 NM off Zuniga Jetty end bearing 070°.
- 16.3. The finish line will be between a staff displaying an orange flag on the RC boat at the starboard end and a yellow tetrahedron mark at the port end. A proper finish will leave the RC boat to starboard. After sunset, the RC shall attempt to display a yellow strobe light.
- 16.4. If, for any reason, the RC boat is not on station at the finish, yachts shall take their own time when the position of Zuniga Jetty light Z bears 270° magnetic and is within 500 yards. Boats shall document the time they pass through the finish by taking a legible photo or screen shot of boat navigation equipment showing Pacific Standard Time, and current latitude/longitude of their vessel, and emailing the image to [rcchair@southwesternyc.org](mailto:rcchair@southwesternyc.org) not later than 1000 hours Sunday, February 4th, 2018. Ensure your yacht name is in the subject line of the email. Finishers should note sail numbers of other yachts finishing at approximately the same time.
- 16.5. If a yacht does not finish by 1000 hours on Sunday, February 4<sup>th</sup>, she shall follow the instructions in 16.4 but report within sixty (60) minutes of her finish.

## 17. TIME LIMIT

- 17.1. There is no time limit.
18. PROTESTS
- 18.1. Protests shall be initiated in compliance with RRS 61, except as amended by these Sailing Instructions.
- 18.2. Protest flags shall be displayed from the backstay. On yachts that have no backstays, the protest flag will be displayed in a prominent position on the stern.
- 18.3. Protesting yachts shall notify the RC boat (when on station), as soon as possible after finishing the race, of their intent to file a protest and receive RC acknowledgment.
- 18.4. In all cases, protesting yachts shall lodge their written protest by emailing the Race Committee at: [protests@southwesternyc.org](mailto:protests@southwesternyc.org), adhering to the same time limits outlined in sections 16.4 and 16.5, above.
- 18.5. Notice of protest and yachts involved, including names of witnesses, if known, and the schedule of hearings, will be posted on the RC Bulletin Board adjacent to the SWYC office, and on the electronic protest committee official notice board at [http://www.regattanetwork.com/event/15825#\\_newsroom](http://www.regattanetwork.com/event/15825#_newsroom) (Hearing Schedule) by 1700 hours Sunday, February 4<sup>th</sup>, 2018. The protest committee will attempt to notify competitors by text message and/or email. Failure to post the notices on the regatta website or send the text message or email notification shall not be grounds for redress or reopening. This changes rule 62.1(a).
- 18.6. Protests will be heard at SWYC at 1900 hours the Thursday following the race.
19. PROTEST ARBITRATION
- 19.1. Arbitration will be available according to Appendix T for breaches of the rules of Part 2 where there is no damage or injury. Protests not resolved through arbitration or Request for Redress will be referred to the Protest Committee for a hearing.
20. SCORING
- 20.1. This is a PHRF San Diego Annual Championship Series event.
- 20.2. PHRF San Diego Random Leg Course ratings will be used to score each series race.
- 20.3. Ratings used to score this regatta will be the PHRF Southern California Area G ratings as determined and supplied by PHRF San Diego. Yachts may not change Fleet/Class during the series.
- 20.4. RRS 44.3 Scoring Penalty shall apply.
- 20.5. This series will be scored as provided in the Notice of Race.
- 20.6. Each series race will be scored with the Low-Point System as provided in Appendix A of the RRS with Section A9 in effect.
- 20.7. Four races have been scheduled for the Cabrillo Series. Although a yacht may enter the series at any time, the series trophy will be awarded based on the best cumulative racing record in the four races of the series, with one "throw out" race.
21. POST-RACE ACTIVITIES
- 21.1. The membership invites all racers to enjoy the hospitality of the SWYC clubhouse after the day's racing.
22. PRIZES
- 22.1. Trophies will be awarded at SWYC on Saturday, March 24<sup>th</sup>, 2018 after Cabrillo IV.
23. FURTHER INFORMATION

23.1. Event Chair Cabrillo Series S/C Sandra Sherman slsherman@cox.net

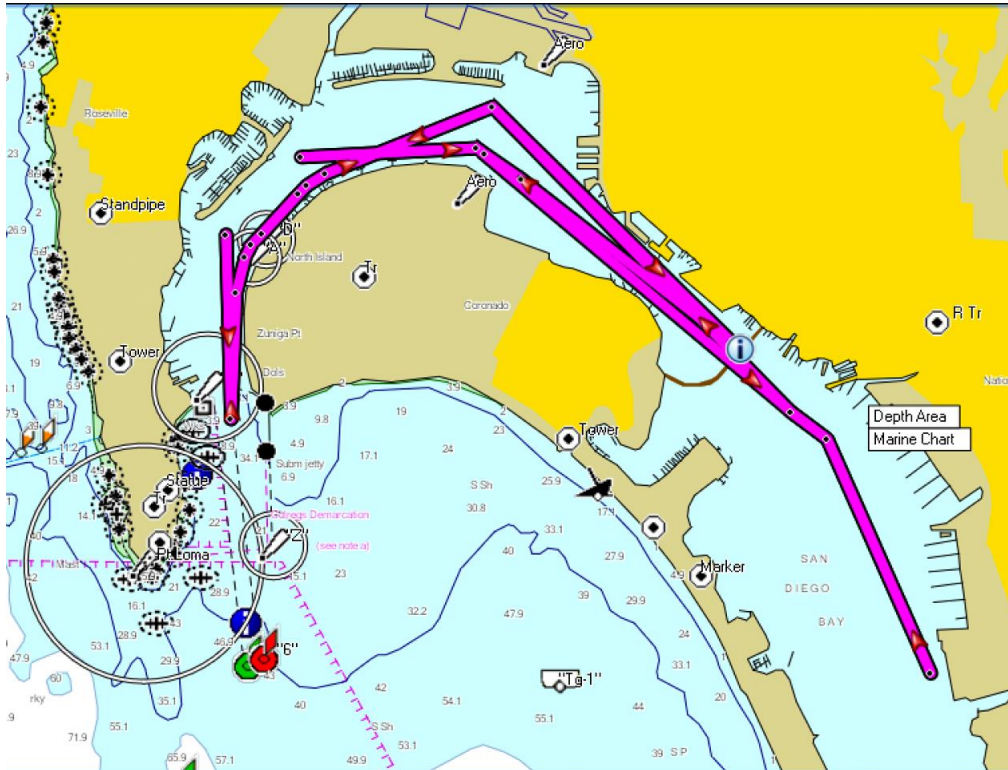
# Attachment A





# Attachment B

## ALTERNATE (INCLEMENT WEATHER) COURSE – All Classes



START 17 - 12 - FM19 s - BridgePier19 s - 19 - 26 s - 26a s - 38 - 26 - 26a - FM19 - 12 s - 17 FINISH

**28.2 nm**