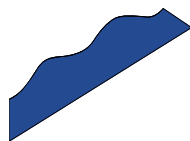


**MIAMI YACHT CLUB
YOUTH SAILING FOUNDATION**



www.420sailing.org

I420 Class Mid-Winter Championship

February 17th – 19th, 2018
Miami, Florida

The Organizing Authority is the Miami Yacht Club Youth Sailing Foundation.

SAILING INSTRUCTIONS

1. RULES

- 1.1 The regatta will be governed by the *rules* as defined in the current Racing Rules of Sailing for 2017-2020 (*RRS*).
- 1.2 The Equipment Rules of Sailing will apply to the extent they are referenced in the respective Class Rules.
- 1.3 The special procedures of Appendix P will apply. See also SI 6.4.
- 1.5 Only the following Prescriptions of US Sailing will apply: *RRS 61.4, Appendix R*, and the prescriptions to *RRS 40, 60.3, 67, 70.5(a) and 76.1*.
- 1.6 Only the following Prescriptions of US Sailing will apply: *RRS 61.4, Appendix R*, and the prescriptions to *RRS 40, 60.3, 63.2, 63.4, 67, 70.5(a) and 76.1*, except that the words “when practicable” in the first sentence of the prescription to rule 63.4 are deleted.

2. NOTICES TO COMPETITORS

Notices to competitors will be posted on the official Notice Board located on the south wall of the patio at Miami Yacht Club (MYC), and by e-mail to all competing boats affected by the Notice. Failure of a boat to receive or read any such e-mails will not be grounds for redress. (This changes *RRS 62.1(a)*.)

3. CHANGES TO SAILING INSTRUCTIONS

- 3.1 Any written change to these Sailing Instructions will be posted as provided in SI 2, above, no later than 8am on the day it will take effect, except that any changes in the Schedule of Races will be posted by the protest time limit on the day before they take effect (see SI 15.2).
- 3.2 Oral changes to the Sailing Instructions may be given on the water. The Race Committee Signal Boat shall display Code Flag "L" and announce the change in accordance with *RRS 90.2(c)*. Competitors shall approach the Committee Boat and verbally receive the change while Code Flag "L" is displayed.

4. SIGNALS MADE ASHORE

- 4.1 Signals made ashore will be displayed from the main flagpole at MYC, and notification will be sent to competing boats by e-mail.

- 4.2 Code Flag "L", when displayed ashore signifies that a change in Sailing Instructions or other Notice to competitors has been posted on the Official Bulletin Board and e-mailed to competing boats affected by the Notice.
- 4.3 Code Flag "AP" when displayed ashore means that the start has been postponed. In that case, "1 minute" is replaced with "not less than 60 minutes" in Race Signals AP.

5. SCHEDULE OF RACES

- 5.1 The First Warning Signal will be at 1200 on Saturday, February 17th, and at 1100 on the two following days of racing.
- 5.2 A maximum of eight races will be sailed. (This changes NOR 4.)
- 5.2 The Race Committee Finishing Boat will display Flag "A" while boats are finishing to indicate "No more racing today." If Flag "A" is not displayed, boats should return to the starting area in anticipation of another race to follow.
- 5.3 On the final day of the regatta, no Warning Signal will be made later than 1400 hours.

6. FORMAT OF RACING and PENALTY SYSTEM

- 6.1 All I-420's will start, race, and be scored as one fleet.
- 6.2 No more than four races will be sailed per day.
- 6.3 One race sailed and completed will constitute a regatta.
- 6.4 Appendix P will apply for the entire regatta.
- 6.5 Unless the course is shortened to finish at a windward mark, penalties within three (3) boat lengths of the windward mark or on the Offset Leg, if used, may be delayed and taken as soon as possible on the subsequent leg. (This changes *RRS* 44.2.)

7. CLASS FLAGS

The Class Flag will be as shown above.

8. RACING AREAS

Racing will be on the ocean south of Government Cut and east of Virginia Key. In the event that conditions prevent the use of that area on any day of racing, racing may be conducted in Biscayne Bay north of the Venetian Causeway. In addition, if conditions prevent the use of the previous areas a third race area in northern Biscayne Bay south of the Rickenbacher Causeway may be used. See Addendum 1.

9. THE COURSES

- 9.1 The Course will be as described in Addendum 2 - COURSE ILLUSTRATION.
- 9.2 Course will be posted on a Race Committee Signal Boat course board prior to the first Warning Signal of each race. The approximate magnetic compass bearing, and approximate distance from the starting line to the first mark will be displayed (This changes *RRS* 27.1). See Addendum 2.
- 9.3 The Course will be: **WL**- Start – 1– OS - 4S/4P – 1 -OS – Finish W as indicated in addendum 2.

10. MARKS

- 10.1 Original Windward Marks and the Leeward Gate Marks will be 5.5 ft. orange inflatable tetrahedron Marks. New Marks will be yellow inflatable tetrahedron Marks. Offset marks will be cylindrical, and will match the color of the mark they offset.
- 10.2 If one of the Leeward Gate Marks is missing, boats shall round the one remaining Leeward Mark to port.
- 10.3 The Starting Mark (if set, see SI 11.1, below) and the Finishing Mark will be 5 ft. yellow inflatable tetrahedron Marks.

11. **THE START**

- 11.1 The starting line will be between a staff displaying an orange flag on the Race Committee Signal Boat and a staff displaying an orange flag on a port end Line Boat or the course side of a yellow inflatable Mark.
- 11.3 The Race Committee Signal Boat may deploy a stand-off buoy attached to the boat. Such buoy shall be tethered to the stern of the Signal Boat and/or the Port Line boat and will function as an extension of that boat.
- 11.4 A boat starting later than four minutes after her starting signal will be scored Did Not Start (DNS) without a hearing. (This changes *RRS A4*.)
- 11.6. Boats whose sail numbers are displayed as BFD or by a Race Committee boat close to Mark 1 following a Black or U Flag start must immediately clear the race course.

12. **CHANGING THE NEXT LEG OF THE COURSE**

To change the next leg of the course, the Race Committee will lay a new Mark (or move the finish line) and remove the old Mark as soon as practicable. When in a subsequent change a new Mark is replaced, it will be replaced by an original Mark.

13. **THE FINISH**

The Finish Line will be between a staff displaying an orange flag on a Race Committee boat and a staff displaying an orange flag on a nearby support Boat, or the course side of a yellow inflatable finishing Mark.

14. **TIME LIMITS**

- 14.1 The time limit and target time (in minutes) are as follows:

-----Time Limits-----

<u>First Mark</u>	<u>Race</u>	<u>Target Time</u>
30	90	45

- 14.3 Any boats not finishing within 15 minutes of the finish time of the first boat in her Class (which has sailed the course in compliance with *RRS 28*) will be scored Did Not Finish without a hearing. This changes *RRS 35, A4 and A5*.
- 14.4 Failure to meet the target time will not be grounds for redress. This changes *RRS 62.1(a)*.

15. **PROTESTS AND REQUESTS FOR REDRESS**

- 15.1 A boat intending to protest should, if practicable, inform the Race Committee immediately after finishing a race and provide the identity of the protested boat(s).
- 15.2 Protest forms will be available at the Protest Desk at MYC. Protests and Requests for Redress shall meet the requirements of *RRS 61* and be delivered to the Protest Desk in person or by e-mail to florencia@mycouthsailing.org within the protest time limit.

- 15.2.1 The time limit is 90 minutes after the last boat finishes the last race of the day, or one (1) hour after a race is abandoned ashore.
- 15.2.2 Notices will be posted promptly following expiration of the protest time limit to inform competitors of hearings in which they are parties or named as witnesses. Protest hearings will be conducted at MYC as soon as possible and in the approximate order in which they were filed.
- 15.2.3 The Race Committee will post a list of boats that have been given starting penalties or other Race Committee actions. If this list is posted prior to the filing deadline, Requests for Redress based on this posting shall be filed no later than thirty (30) minutes after the protest time limit. This changes *RRS 62.2*
- 15.3 Notices of protests by the Race Committee or Protest Committee will be posted to inform boats under *RRS 61.1(b)*.
- 15.4 It is each boat's sole responsibility to check the Regatta Notice Board at MYC or its e-mail promptly after the end of the protest filing time to see if she is cited in a protest. Should any party fail to appear when called for a hearing, the Protest Committee may proceed in accordance with *RRS 63.3(b)*.
- Representatives of boats who are parties to hearings and their witnesses shall remain on call in the vicinity of the Protest Desk until excused by the Protest Committee.
- 15.5 On the last scheduled day of racing, a request for reopening a hearing shall be delivered:
On the last scheduled day of racing, a request for redress based on a protest committee decision shall be delivered no later than thirty (30) minutes after the decision was posted. This changes *RRS 62.2*.
- 15.6 Breaches of *SI 19* or *RRS 55* will not be grounds for protest by a boat. (This changes *RRS 60.1*.)
- 15.7 The actions of media boats will not be grounds for redress. (This changes *RRS 62.1(a)*.)
- 15.8 The protest committee may impose suitable penalties of less than disqualification, for violations of non Part 2 rules, rule 28 and 31 or the *RRS*; in accordance with *RRS 64.1*.

16. SCORING

- 16.1 The Low Point Scoring System, as provided in *RRS Appendix "A"* shall apply, except as changed in these Sailing Instructions, as follows.
- 16.2 When fewer than six races have been completed, a boat's score will be the total of her race scores. (This changes *RRS A2*.)
- 16.3 When six or more races have been completed, a boat's series score will be the total of her race scores excluding her worst score.

17 SUPPORT AND COACH BOATS

- 17.1 Except when rendering assistance to a boat in danger at the boat's request or at the request of the Race Committee, support and coach boats shall stay 100 meters outside areas where boats are racing from the time of the Preparatory Signal for the first Class to start until the time the last boat finishes or the Race Committee signals a postponement, general recall or abandonment.
- 17.2 Support and coach boats shall be marked with national letters or a country flag.
- 17.3 A hearing may be called if a coach boat fails to comply with the requirements of this *SI 18*. The penalty for failing to comply with these requirements or the oral instructions of the Race Committee or the Protest Committee will be at the discretion of the Protest Committee. The penalty may be imposed on any or all boats associated with the support or coach boat.

18. SAFETY REQUIREMENTS

- 18.1 Competitors shall wear adequate personal buoyancy while on the water, other than for brief periods while adding or removing clothing.

- 18.2 A boat that retires from a race or does not intend to start a scheduled race shall promptly report this to the Race Committee via hailing and receive acknowledgement. If this is not possible, she shall promptly report her actions to the Protest Desk on shore at MYC.
- 18.3 Boats that are not leaving the harbor to race shall inform the Protest Desk prior to the start of the first race of that day.
- 18.4 Prior to the Warning Signal of the first race she sails each day, each boat shall sail on starboard tack past the stern of the Signal Boat, and shall hail her sail number until acknowledged by the Race Committee. It will be at the discretion of the protest committee to impose a penalty to any boat failing to comply with this SI (18.4).

19. RADIO COMMUNICATION

A boat shall neither make radio transmissions while racing nor receive radio communication not available to all boats. This restriction also applies to mobile phone cell phone calls and text messages.

20. DISCLAIMER OF LIABILITY

Competitors participate in the regatta entirely at their own risk. See *RRS 4*, Decision to Race. The Organizing Authority, Race Committee, host club, and their officers, employees and volunteers will not accept any liability for material damage or personal injury or death sustained in conjunction with or prior to, during, or after the regatta.

21. INSURANCE

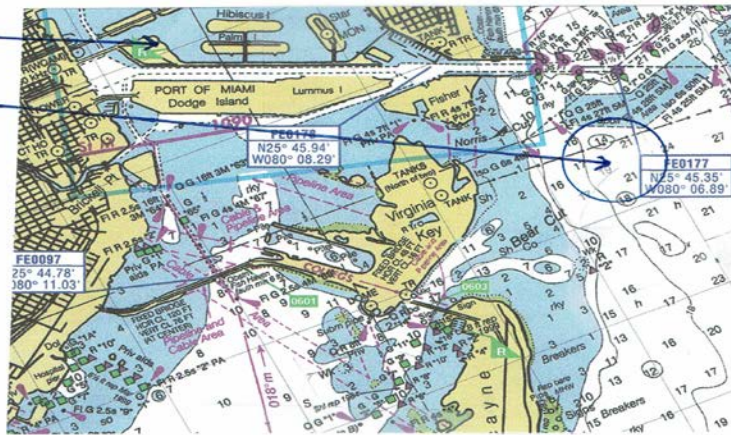
Each participating boat shall be insured with valid third-party insurance with a minimum cover of US\$300,000 per occurrence or the equivalent.

Your Principal Race Officer is Jon Graham.

**ADDENDUM 1
RACING VENUES**

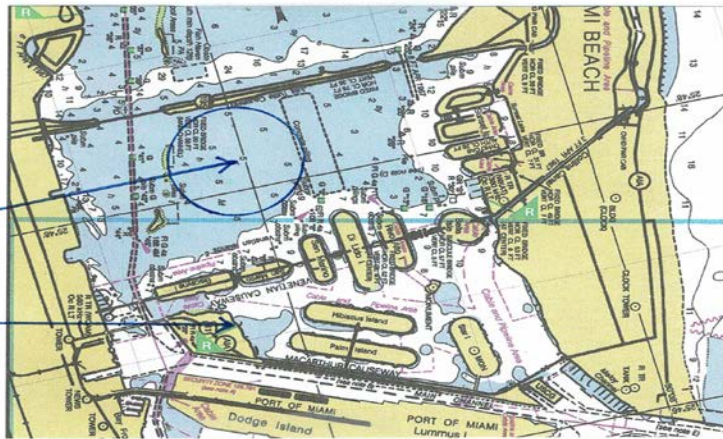
MIAMI YACHT CLUB

OCEAN RACE AREA

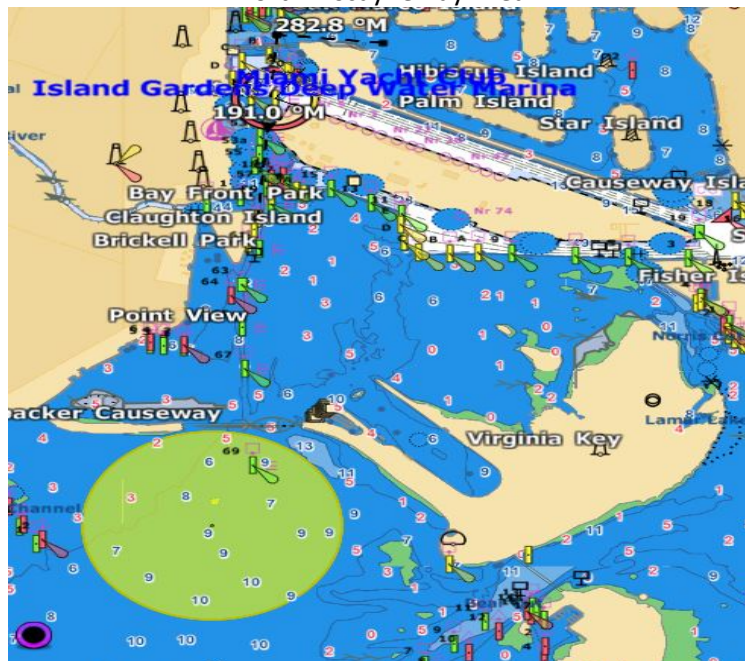


BAY RACE AREA

MIAMI YACHT CLUB



North Biscayne Bay Area



ADDENDUM 2
COURSE ILLUSTRATION

EXAMPLE COURSE BOARD – R/C SIGNAL BOAT

<u>BEARING</u>	<u>CLASS COURSE</u>	
120°	I-420	WL
<u>RANGE</u>		
0.8 NM		




Wind



 
 OS 1

4S 4P



Start  -----  R/C -----  Finish