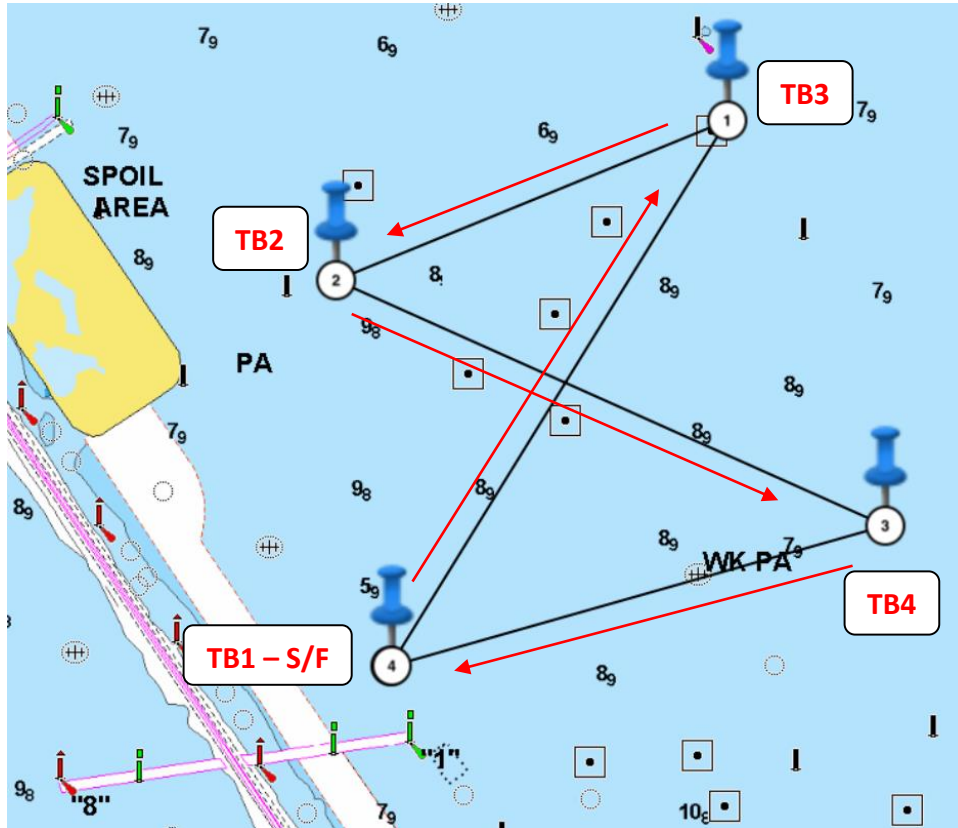


2018 Bay Cup I Sailing Instructions

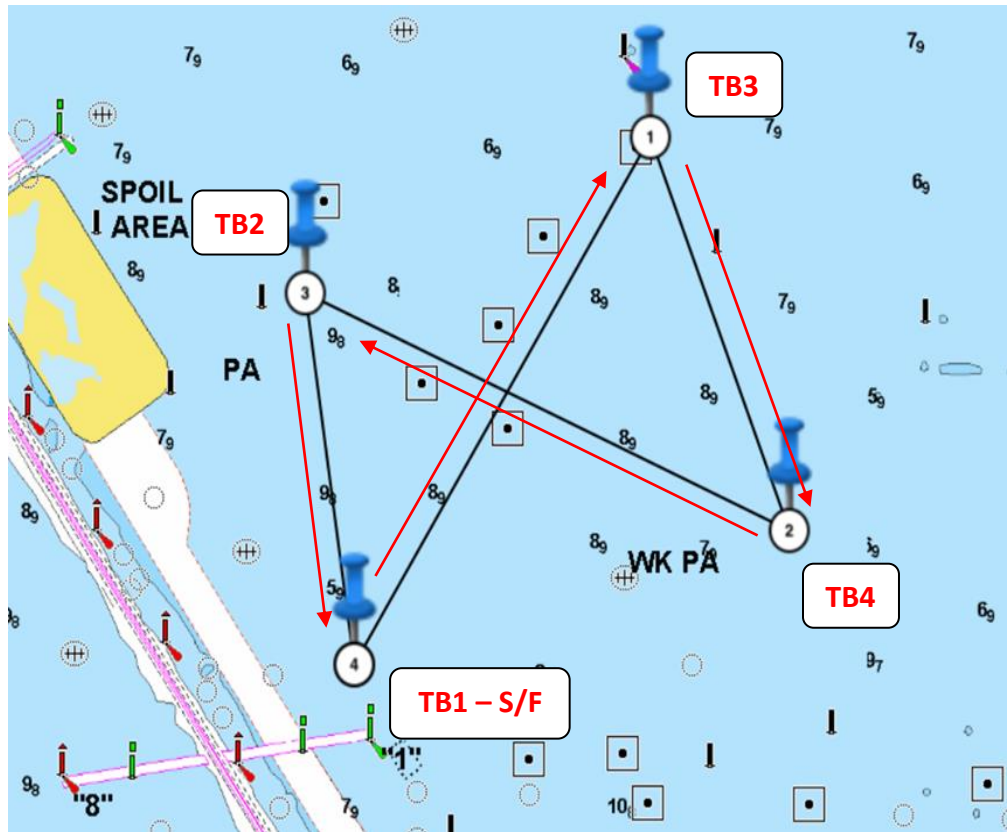
ATTACHMENT A: COURSES

Course 1



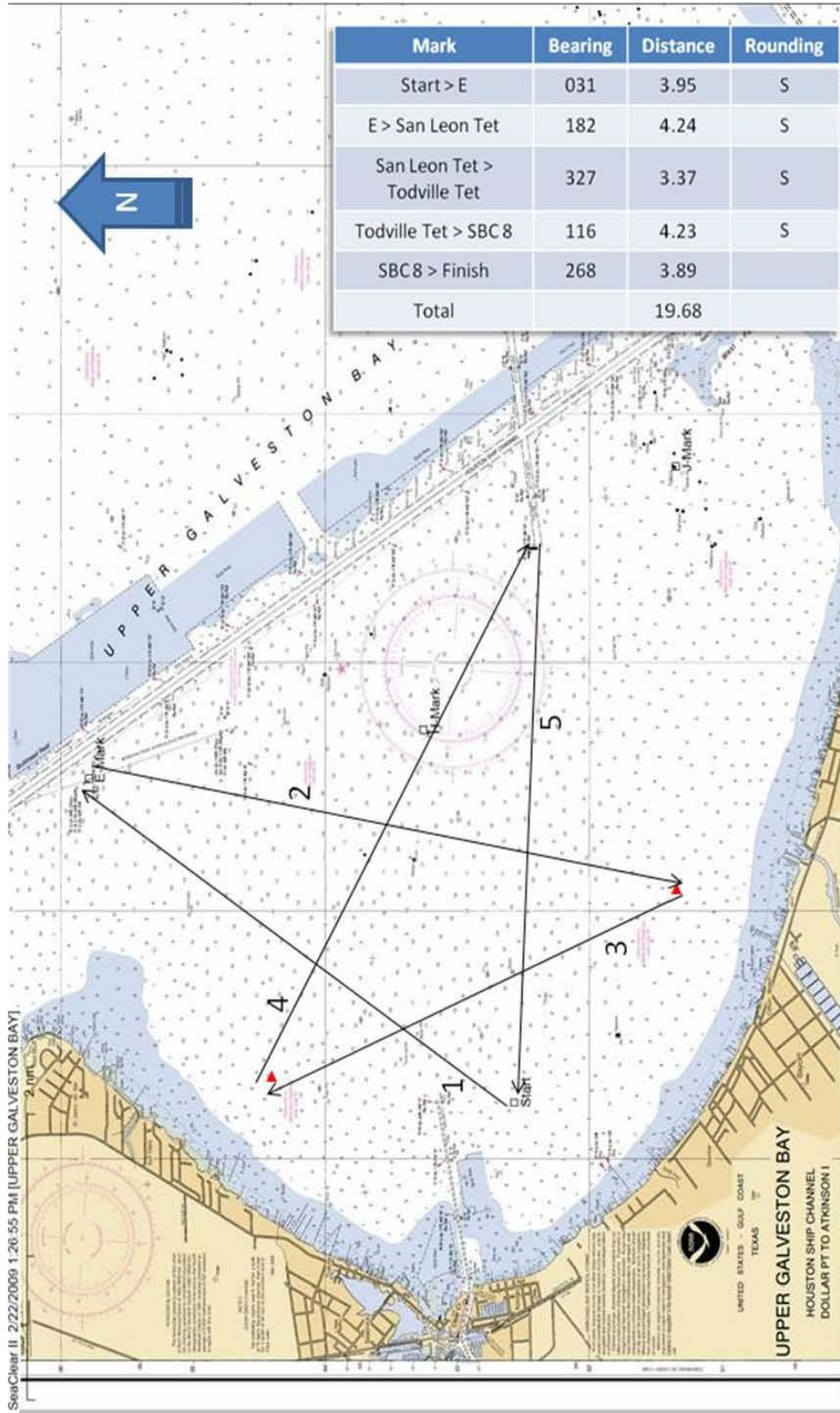
	Location	Approx Bearing	Distance	Lat	Lon	Instruction
Start	b/w signal boat & pin / near TB 1			29°32.950	94°53.300	
1	TB 3	32°	3.0 nm	29°35.500	94°51.500	Leave to port
2	TB 2	248°	2.0 nm	29°34.750	94°53.600	Leave to port
3	TB 4	114°	2.8 nm	29°33.600	94°50.650	Leave to stbd
Finish (4)	b/w signal boat & pin / near TB 1	254°	2.4 nm	29°32.950	94°53.300	

Course 2



	Location	Approx Bearing	Distance	Lat	Lon	Instruction
Start	b/w signal boat & pin / near TB 1			29*32.950	94*53.300	
1	TB 3	32*	3.0 nm	29*35.500	94*51.500	Leave to stbd
2	TB 4	159*	2.0 nm	29*33.600	94*50.650	Leave to stbd
3	TB 2	294*	2.8 nm	29*34.750	94*53.600	Leave to port
Finish (4)	b/w signal boat & pin / near TB 1	172*	1.8 nm	29*32.950	94*53.300	

Appendix A - Course 3 "Star"



Appendix A - Course 4 "Bowtie"

