

## West River Sailing Club Dave Irey Regatta

Galesville, MD

Saturday and Sunday June 2-3, 2018

### **SAILING INSTRUCTIONS**

5/13/2018

#### **1 RULES**

- 1.1 The regatta will be governed by the rules as defined in *The Racing Rules of Sailing*.

#### **2 NOTICES TO COMPETITORS**

- 2.1 Notices to competitors will be posted on the notice board located on the East window of the WRSC clubhouse.

#### **3 CHANGES TO SAILING INSTRUCTIONS**

- 3.1 Any shore side change in the sailing instructions will be posted on the official notice board before 0900 on the day it will take effect, except that any change to the schedule of races will be posted by the end of protest time on the day before it will take place.
- 3.2 For an on the water change to the sailing instructions: "L" flag, will be displayed from the race committee signal boat while anchored. The change will be announced on the designated VHF channel. This changes RRS 90.2 and Race Signals.

#### **4 SIGNALS MADE ASHORE**

- 4.1 Signals made ashore will be displayed from the flagpole located at WRSC. When flag AP is displayed ashore, '1 minute' is replaced with 'not less than 30 minutes' in the race signal AP.

#### **5 SCHEDULE**

##### 5.1 Saturday

- 0800 On-site registration opens (Payment by cash or checks only)  
0930 On-site registration closed  
0930 Competitors' meeting (at flagpole or inside if raining)  
1100 First warning signal

The Race Committee (RC) will announce the order of starts for the first race at the competitors' meeting. Subsequent starts for any class may occur at any time after that class finishes.

##### 5.2 Sunday

- 1030 First warning signal  
1500 No races will start after this time  
Awards will follow racing.

##### 5.3 Number of Races:

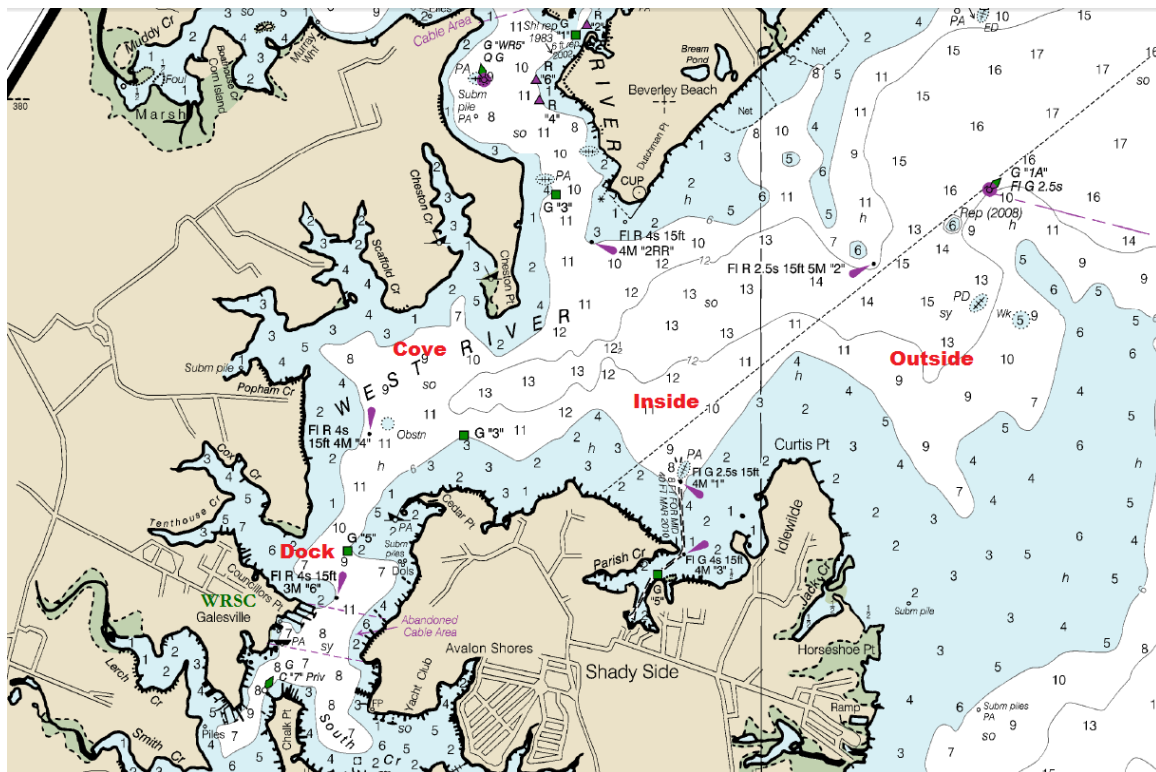
There is no limit to the number of races. The committee will attempt to maximize racing for the conditions available.

#### **6 CLASS FLAGS**

- 6.1 Class flags will be the respective insignia or as described at the competitor's meeting.

**7 RACING AREA**

7.1 The venue shall be finalized by the RC on race day in the vicinity of the entrance of the West River, between the Rhode River and Parrish Creek. See chart below.



**8 THE COURSES**

8.1 The course will be as shown in Appendix A.

**9 MARKS**

9.1 The marks will be as described at the competitors' meeting.

**10 THE START**

- 10.1 The starting line will be between a staff displaying a yellow flag on the RC signal boat and the course side of the port-end starting mark to be left to port.
- 10.1 Boats whose warning signal has not been made shall avoid the starting area during the starting sequence for other races.
- 10.2 Note that the order of starts may not be constant.

**11 THE FINISH**

- 11.1 The finish line will be between a staff displaying the yellow flag on the RC signal boat and the course side of the port-end finishing mark to be left to port.

**12 PENALTY SYSTEM AND PROTESTS**

- 12.1 For the multihull classes, rule 44.1 is changed so that the Two-Turns Penalty is replaced by the One-Turn Penalty.

**13 TIME LIMITS**

- 13.1 The time limit will be 2 hours for the first boat to finish.
- 13.2 Boats failing to finish within 30 minutes after the first boat sails the course and finishes will be scored Did Not Finish without a hearing. This changes RRS 35, A4, and A5.

**14 PROTESTS AND REQUESTS FOR REDRESS**

- 14.1 Protest Forms are available at the bar. Protests and requests for redress or reopening shall be delivered to the PRO within one hour after the RC returns to the dock.

**15 SCORING**

- 15.1 One (1) race is required to be completed to constitute a series.
- 15.2 Throw-Outs:
  - (a) When fewer than 5 races have been completed, a boat's series score will be the total of her race scores.
  - (b) When from 5 to 11 races have been completed, a boat's series score will be the total of her race scores excluding her worst score.
  - (c) When 12 or more races have been completed, a boat's series score will be the total of her race scores excluding her two worst scores.

**16 SAFETY REGULATIONS**

- 16.1 Before starting their first race of the day, all competitors' boats shall sail astern the signal boat, give their sail number and be acknowledged by the race committee.
- 16.2 A boat that retires from a race shall notify the race committee as soon possible.

**17 SUPPORT BOATS**

- 17.1 Support boats shall be marked with the letters WRSC or as described at the competitors' meeting.

**18 RADIO COMMUNICATION**

- 18.1 Except in an emergency, a boat that is racing shall not make voice or data transmissions and shall not receive voice or data communications that is not available to all boats. This restriction also applies to mobile telephones but does not apply to communications to notify RC that a competitor is leaving the race area.

**19 PRIZES**

- 19.1 For each class, prizes will be given to the first-place finisher in classes with three or fewer entries, the first two finishers in classes with six or fewer entries, and the first three finishers in classes with seven or more entries.

**20 DISCLAIMER OF LIABILITY**

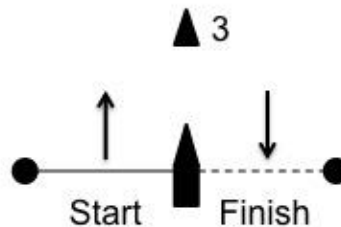
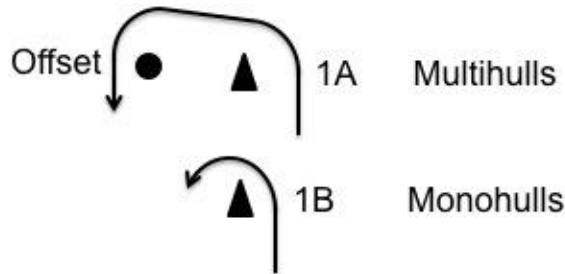
- 20.1 Competitors participate in the regatta entirely at their own risk. See RRS 4, Decision to Race. The organizing authority will not accept any liability for material damage or personal injury or death sustained in conjunction with or prior to, during, or after the regatta.

**APPENDIX A: MARK CONFIGURATIONS AND POSSIBLE COURSES**

The course will be around racing marks set by the RC. Courses will be Windward-Leeward or Triangle-Windward-Leeward designated by a letter “W” or “O” (respectively) posted on the starboard side of the signal boat. The number of legs will be designated after the letter (ie. “W4” indicates windward, leeward, windward, then finish to leeward). All turning marks will be left to port. The course length will be set for a race duration of about 20-40 minutes.

**Extended Windward Mark for Multihulls:** On all courses, the multihull classes will use an extended windward mark (shown as 1A in the Appendix). The monohull classes will use the closer windward mark (shown as 1B).

**Windward Offset Mark for Multihulls:** For the multihull classes there will be an offset mark near the windward mark, which must be rounded as a mark of the course.



**Courses For Monohulls:**

- “W2”: Start-1B-Finish
- “W4”: Start-1B-3-1B-Finish
- “O5”: Start-1B-2-3-1B-Finish

**Courses For Multihulls:**

- “W2”: Start-1A-Offset-Finish
- “W4”: Start-1A-Offset-3-1A-Offset-Finish
- “W6”: Start-1A-Offset-3-1A-Offset-3-1A-Offset-Finish