



Single Handed and Mixed Doubles Regatta

Galveston Bay Texas

October 6 & 7, 2018

Galveston Bay Cruising Association

1500 Marina Bay Dr. Suite 1592 Clear Lake Shores, TX

1. RULES

The regatta will be governed by the *rules* as defined in the current 2017-2020 *Racing Rules of Sailing*, the Notice of Race, any OD Class Rules and these Sailing Instructions.

The following RRS are modified herein:

Sailing Instruction 6.2 modifies RRS 62.1(a)

Sailing Instruction 9.2 & 9.3 modifies RRS 26

Sailing Instruction 13 modifies RRS 61

Sailing Instruction 15 modifies RRS 35

2. NOTICES TO COMPETITORS

Notices to Competitors will be posted at:

https://www.regattanetwork.com/clubmgmt/applet_club_events.php?CLUB_ID=162.

3. CHANGES TO THE SAILING INSTRUCTIONS

Any change to the sailing instructions or notice of race will be posted before 1000 on the day it will take effect.

4. WARNING SIGNAL

4.1 The warning gun for the first race will be 11:00. Subsequent races for each class will follow as soon as possible after the end of the previous race.

5. Racing Area

The racing area will be in the part of Galveston Bay between Seabrook and the Houston Ship Channel, and between San Leon and the Bayport Ship Channel. Boats shall not enter the Houston Ship Channel or Bayport Ship Channel while *racing*. The Houston Ship Channel and the Bayport Ship Channel are designated as obstructions.

6. RADIO COMMUNICATION

6.1 Radio communication will be conducted on VHF channel 69.

6.2 In addition to signaling Individual Recalls in accordance with RRS 29.1, as a courtesy, the Race Committee will attempt to broadcast the names or sail numbers of boats that have started early. Failure to make such a broadcast, failure of a boat to receive that broadcast, a boat's order in that broadcast, or the promptness of that broadcast will not be grounds for redress. This modifies RRS 62.1(a).

7. CHECK-IN PROCEDURE

All yachts intending to race shall check in with the Race Committee on VHF Channel 69 prior to their warning signal.

8. START LINE / FINISH LINE

The Start Line / Finish Line will be approximately 0.6nm south of Clear Lake channel marker 1, between an Orange Flag displayed from the Signal Boat and the course side of a nearby Yellow Mark.

9. THE START

9.1 The starting line will be between the staff displaying an orange flag on the Signal Boat on the starboard end and the course side edge of a nearby Mark at the port end of the line.

10. COURSE and MARKS

10.1 Courses will be signaled by the numeral pennant correlating with the course diagrams described in Appendix A. The **approximated** heading and distance to each mark are also described for fixed mark courses.

10.2 "Course 4" in Appendix A will be a 4-leg Windward/Leeward course.

10.3 Fixed mark courses will use marks "E", "H", and "M52" Approximate coordinates and description of the marks are:

Mark	Approximate Coordinate	Description
Start/Finish Gate	N 29° 32.567' W 094° 59.545'	<i>RC Signal boat and a nearby orange Tetrahedron</i>
E	N 29° 35.787' W 094° 56.935'	<i>The Low Range Marker (Upper Range "A") in Galveston Bay. The mark is an orange and white structure near Houston Ship Channel Marker #73, 0.23 nm NNW of the old low range.</i>
H	N 29° 33.255' W 094° 56.542'	<i>A platform located in Galveston bay, approximately 1.3 nm WSW of the Houston Ship Channel marker #65.</i>
M52	N 29° 31.808' W 094° 55.597'	<i>Galveston Shellfish Harvesting Boundary Marker</i>

Boats shall not enter the Houston Ship Channel. The Houston Ship Channel is designated as an Obstruction. A chart showing the relative position of the marks will be available as Appendix A. This chart is schematic in nature and is not to be used for navigation. In the event a mark is missing, boats shall round the coordinates of the missing mark.

11. THE FINISH

The Finish Line will be between a staff displaying an orange flag on the Signal Boat on the port end and the course side edge of the starboard end Orange Mark.

12. Shorten Course

If the Race Committee displays the "S" code flag, all classes will sail the shortened course. The race committee is prepared to recalculate the adjustments for the shortened course.

13. PROTESTS

Protests shall be communicated to the Race Committee before leaving the race area and must be filed in writing within 2 hours of the last boat finishing. This modifies RRS 61. Protests shall be filed at the GBCA office.

14. SAFETY and WITHDRAWING PROCEDURES

14.1 Attention is called to RRS 4: Decision to Race, "The responsibility for a boat's decision to participate in a race or to continue *racing* is hers alone."

14.2 The Race Committee places high priority on accounting for every yacht participating in a race. It is imperative that any yacht withdrawing from a race makes its best and most persistent efforts to notify other parties of such withdrawal at the earliest opportunity. Withdrawing yachts should make every effort to contact the Race Committee and/or other nearby yachts to communicate the withdrawal via VHF channel 69. . If radio communication is unavailable, call the Race Committee phone number: 713-591-8115 and leave a message. Text messages to this number are also acceptable. Proper reporting of a withdrawal should include; yacht name, sail number and skipper's name.

14.3 Singlehanded Regatta – Code flag "Y" **WILL BE** displayed from the RC Signal boat in accordance with the Racing Rules of Sailing 27.1.

14.4 Mixed Doubles Regatta – Code flag "Y" **MAY BE** displayed from the RC Signal boat in accordance with the Racing Rules of Sailing 27.1.

15. TIME LIMIT

None, except we have awards reception and après race drinks scheduled the GBCA Lounge Deck Sunday immediately after racing. This modifies RRS 35.

16. SCORING

The Race Committee will score the race using the performance handicapping racing formula, time on distance, for each yacht, as determined by the Race Committee.

17. Schedule of Events

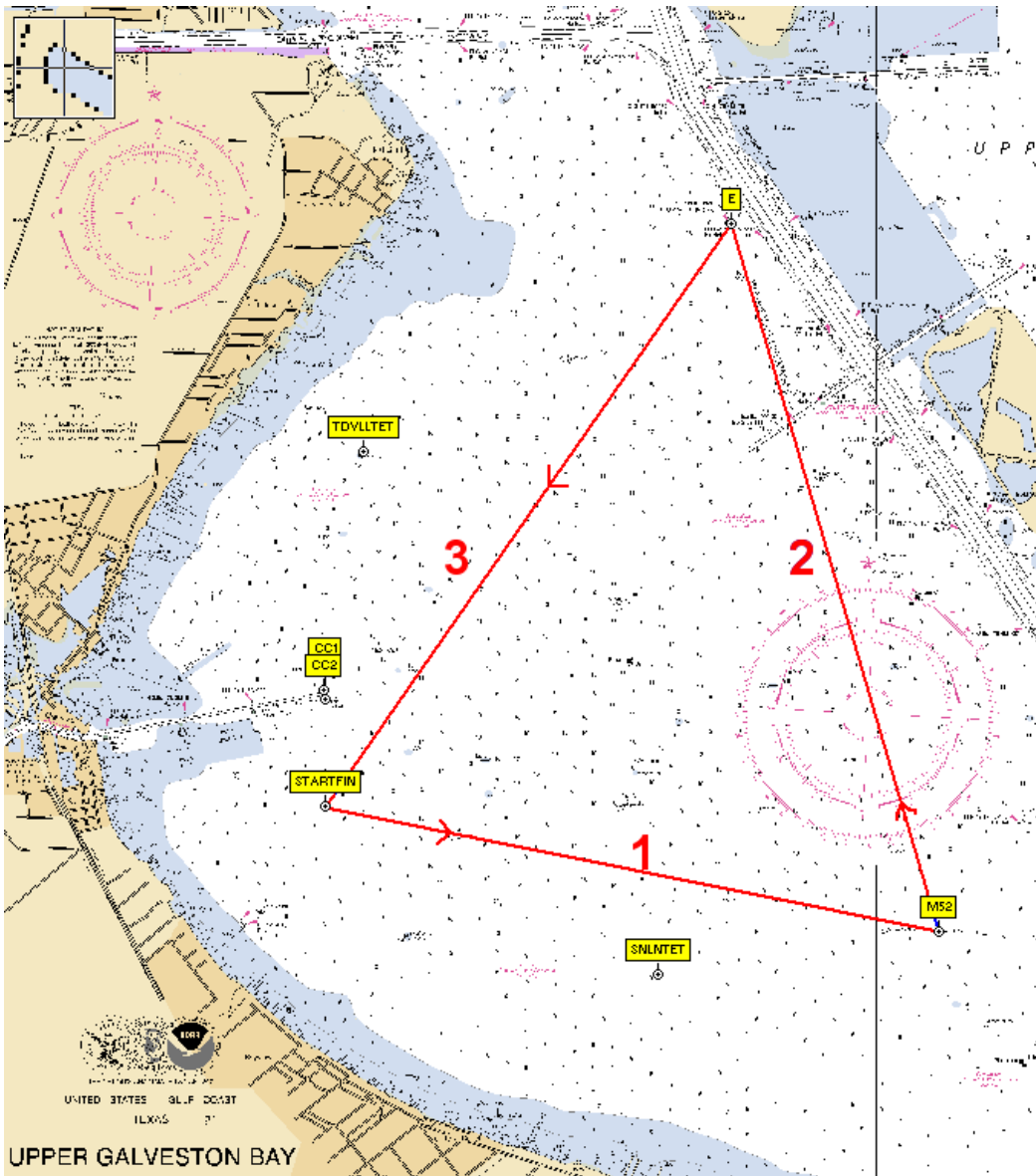
17.1 A Competitors Briefing for both events will be held at the GBCA office at 19:00 Friday, October 5, 2018.

17.2 These are single day regattas, therefore, as many races as practical will be run during each regatta. Subsequent races for each class will be started as soon as possible after the class has finished the prior race. The warning signal for the first race of the regatta will not be before 11:00 hours Saturday, October 6th, 2018.

17.3 Refreshments and trophy presentations for both Regattas will be on Sunday, October 7, 2018 at the GBCA clubhouse following the conclusion of the last race.

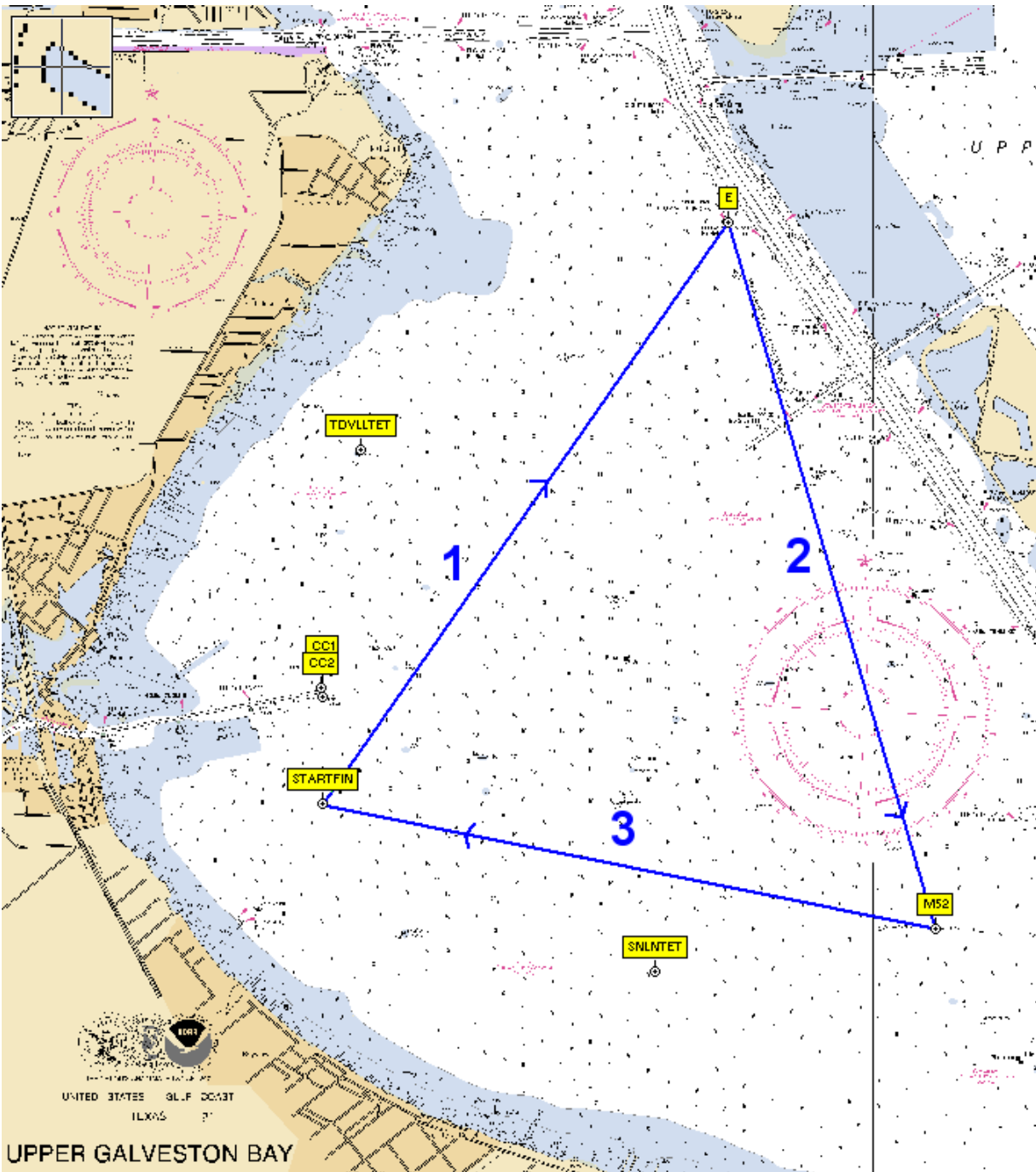
This page intentionally blank

Appendix A - Course 1 "Rum Forward"



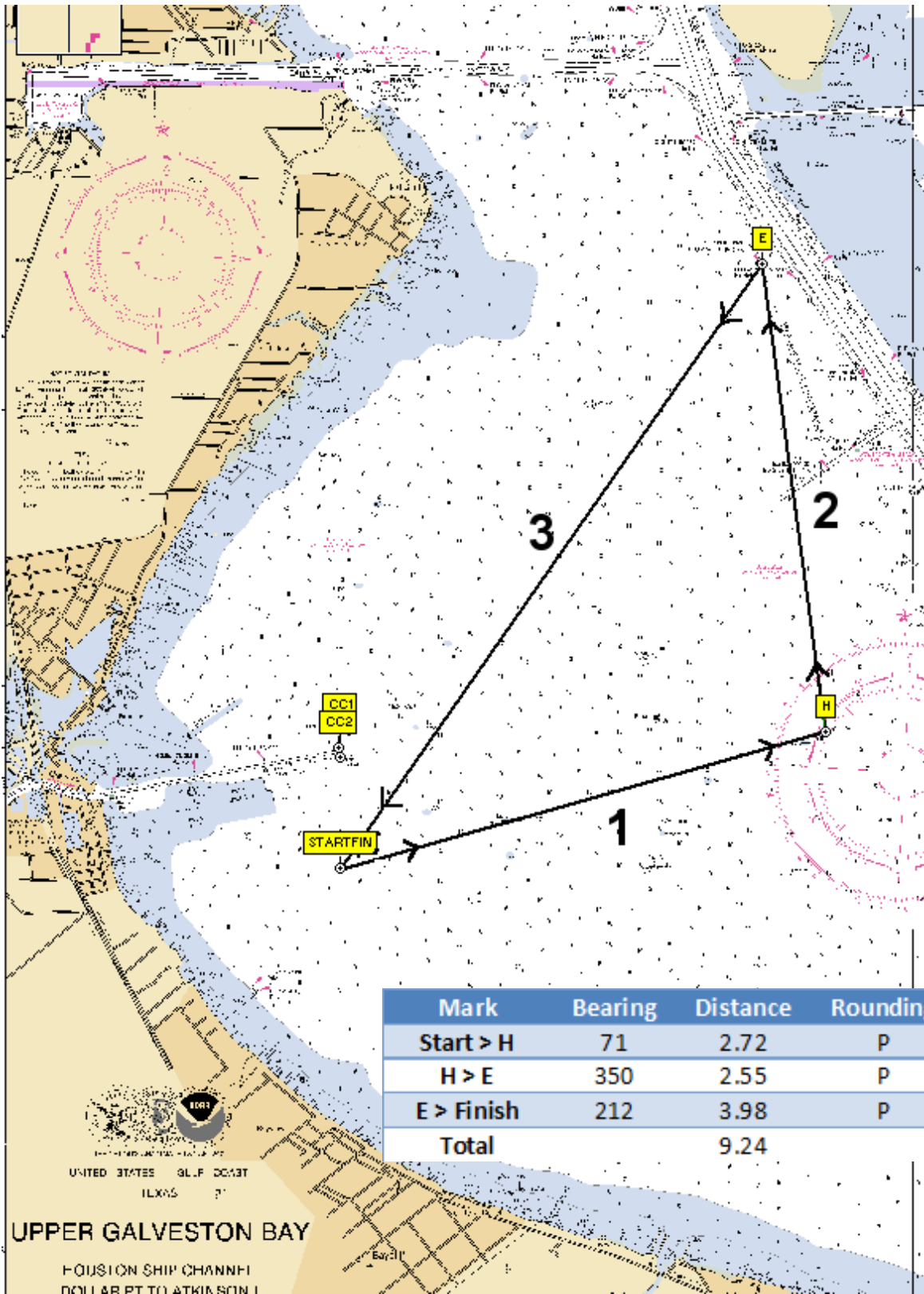
Mark	Bearing	Distance	Rounding
Start > M52	99	3.51	P
M52 > E	341	4.13	P
E > Finish	212	3.98	P
Total		11.62	

Appendix A - Course 2 "Rum Reverse"

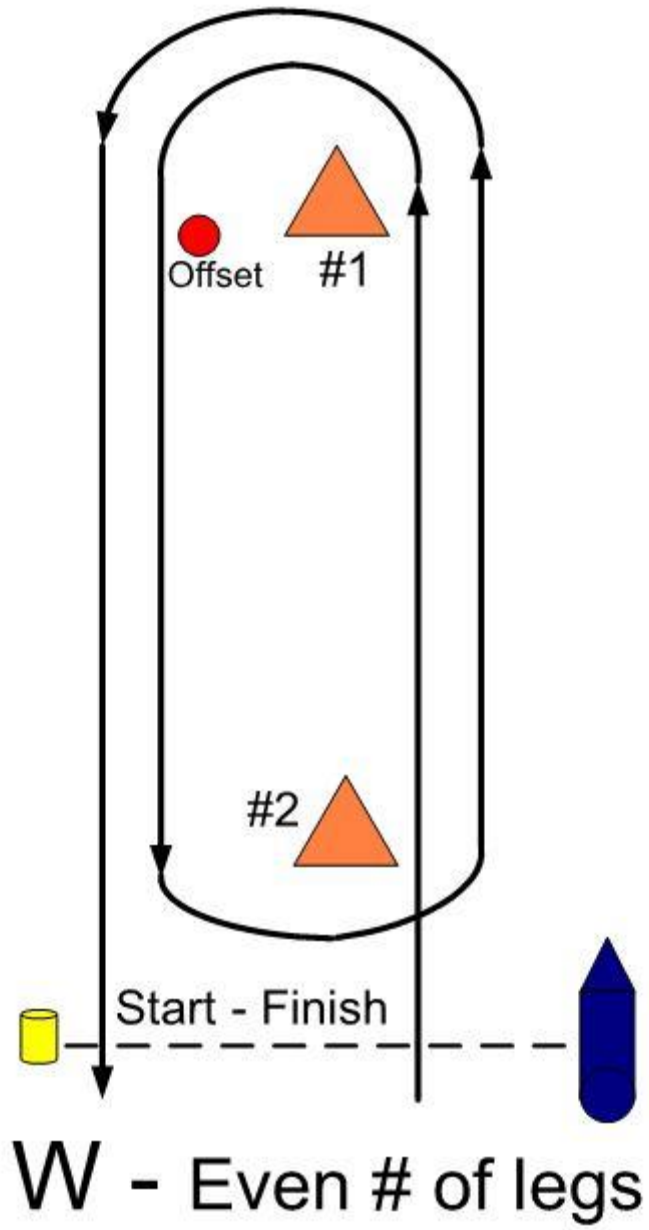


Mark	Bearing	Distance	Rounding
Start>E	032	3.98 nm	S
E> M52	161	4.13	S
M52> Finish	279	3.51	S
Total		11.62	

Appendix A - Course 3 "Icicle Forward"



Appendix A - Course 4 - 4 Leg W/L



Starting Order and Class Flags

Singlehanded

1. Club Handicap – Pink Flag
2. PHRF Non-Spin – Blue Flag

Mixed Doubles

1. Club Handicap – Pink Flag
2. PHRF Non-Spin – Blue Flag
3. J-22 – Red Flag