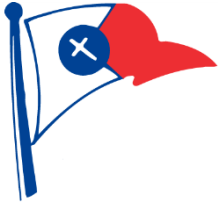


2017 Cliff McNamara Champion of Champions Invitational



March 31, 2018

Santa Cruz Yacht Club
Santa Cruz, CA, USA

Sailing Instructions

1. Rules

- 1.1. The regatta will be governed by the rules as defined in *The Racing Rules of Sailing (RRS)*.
- 1.2. Monterey Bay PHRF rules and current ratings will apply, except that boats which have qualified by winning a jib and main class and desire to sail the Invitational without a spinnaker will have 12 sec/mile added to their rating. One-design qualifiers that do not have a valid Monterey Bay PHRF certificate will be assigned a PHRF rating by the race committee.
- 1.3. Qualifiers from the Double-Handed fleets or the Jack and Jill Regatta may race with a full crew under class rules.
- 1.4. The first sentence of RRS 40 is changed so that competitors shall comply with the obligations of RRS 40 (wear a PFD) whether or not the Race Committee displays flag Y with one sound.

2. Notices to Competitors

- 2.1. Notices to competitors will be posted on the official notice board in the northeast window of the Clubhouse, upper level
- 2.2. There will be a competitors briefing at 1100 on March 31, 2018 in the upper level of the SCYC clubhouse
- 2.3. On the water, the Race Committee may use VHF Channel 68 for communication.

3. Changes to Sailing Instructions

- 3.1. Any changes to the sailing instructions will be announced at the competitors' briefing and posted promptly after the briefing.

4. Signals Made Ashore

- 4.1. Signals made ashore will be displayed from the Santa Cruz Yacht Clubhouse flagpole.
- 4.2. When flag AP is displayed ashore, '1 minute' is replaced with 'not less than 60 minutes' in the race signal AP. This changes *Race Signals*.

5. Schedule of Races

- 5.1. There is one race scheduled for all participating boats.
- 5.2. The warning signal for the race is 1255 hours on March 31, 2018

6. Racing Areas

- 6.1. Racing will be around existing government marks and inflatable marks set within 3 nautical miles of the Start/Finish mark.

7. Marks and the Course

- 7.1. Appendix A shows the course, a description of each mark, and the rounding order and direction for each mark.

8. The Start

- 8.1. The starting line will be between a staff displaying an orange flag on the Signal Boat and the course side of the start/finish mark.
- 8.2. The class flag shall be code Flag F.
- 8.3. This is a reverse-handicap race. Yachts will be started in reverse order of their PHRF handicap rating with the slower rated boats starting at specified times ahead of faster rated Yachts
- 8.4. The start time for each Yacht shall be available at the competitors' meeting, and shall be posted on the notice board prior to 1130 hours on March 31, 2018.
- 8.5. The initial start will be accordance with RRS 26. Thereafter, the signal boat may sound one horn at the prescribed start time for each Yacht or Yachts. This changes RRS 26.
- 8.6. All start times will be based on the clock on the back of the Ernie Rideout signal boat, and competitors are encouraged to synchronize their timepieces with that clock before leaving the dock. The Race Committee may periodically announce the clock time on the VHF.
- 8.7. For the purpose of complying with RRS Part IV and the RRS definition of *racing*, each Yacht's preparatory signal is deemed to take place four minutes before her prescribed starting time.
- 8.8. The Race Committee may hail, on VHF, the sail number or other identifying feature of any Yacht that was on the course side of the starting line at her start signal. The failure of a hail, the failure of a boat to hear a hail, or the order of the hail(s) shall not be grounds for a boat to request redress. This changes RRS 29 and 62.1.

9. Postponements

- 9.1. If the starts are postponed, the postponement will be in full minute increments. The signal boat will display the number of minutes of postponement with signal flags. Competitors shall adjust their start times accordingly.
- 9.2. The Race Committee may periodically announce the number of minutes of postponement on the VHF.

10. Finish

- 10.1. The finishing line will be between a staff displaying an orange flag on the Signal Boat and the course side of the Start/Finish mark.

11. Penalty System

- 11.1. RRS 44.1 is changed so that the Two-Turns Penalty is replaced by the One-Turn Penalty.

12. Scoring

- 12.1. One race is required to complete the championship.

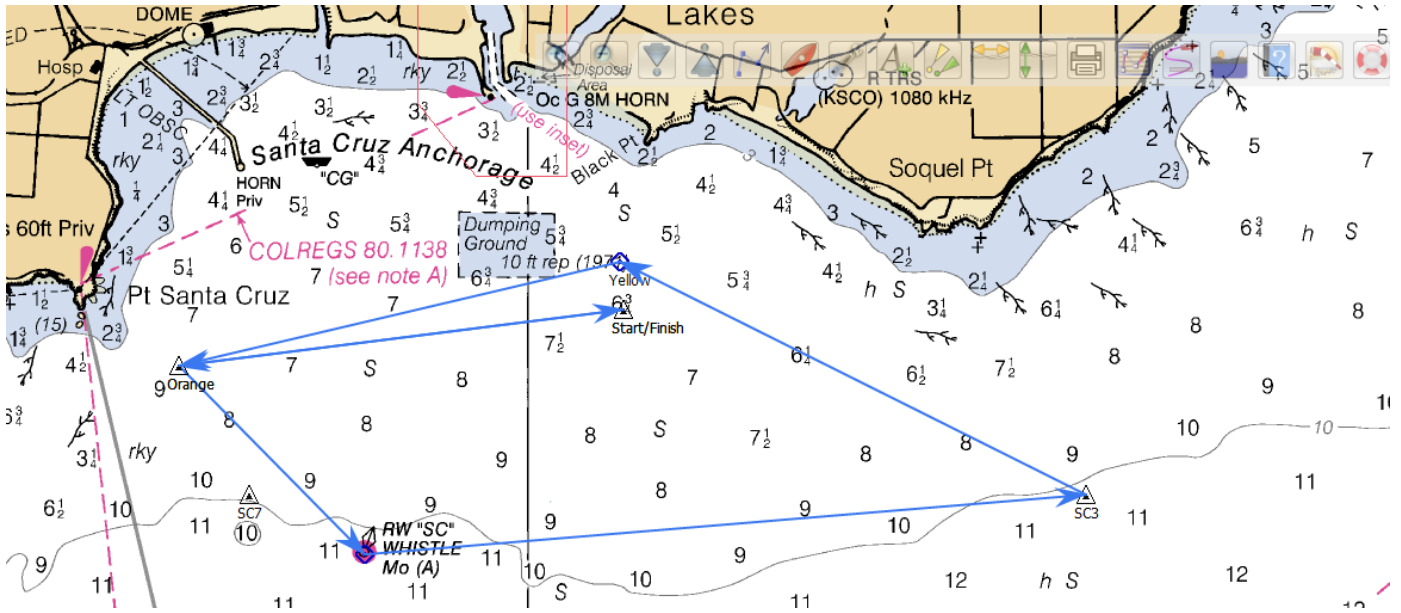
13. Protests and Requests for Redress

- 13.1. Protest forms are available at the SCYC Regatta Shed located in the dry storage area and the SCYC Club House Bar. Protests and requests for redress or reopening shall be delivered to either of these locations, within the appropriate time limit..
- 13.2. The protest time limit is sixty minutes after the signal boat has arrived at her berth in Santa Cruz Harbor. The protest filing time limit will be posted on the official notice board.
- 13.3. Notices will be posted no later than thirty minutes after the protest filing time limit to inform competitors of hearings in which they are parties.

14. Prizes

- 14.1. The overall winner on corrected time will be designated as the 2017 Cliff McNamara Champion of Champions and will have the boat name affixed to the perpetual trophy.

Appendix A



Course

Start, Orange (P), Mile (P), SC3(P), Yellow (P), Orange(P), Finish

Course Length approximately 8.22 miles

Marks

All marks listed in the table below are rounding marks except marks "Start/Finish" and "Signal Vessel".

| Mark Name | Mark Location | Mark Description |
|------------------|--------------------------|-------------------------------|
| Signal Boat | Near Start/Finish mark | Vessel Ernie Rideout |
| Start /Finish | 36°57.03'N – 121°59.66'W | Red Ball |
| Orange | 36°56.87'N – 122°01.25'W | Orange Inflatable Tetrahedron |
| Yellow | 36°57.17'N – 122°59.67'W | Yellow Inflatable Tetrahedron |
| Mile Buoy (Mile) | 36°56.35'N – 122°00.56'W | Large RW "SC" WHISTLE buoy |
| SC3 | 36°56.50'N – 121°58.00'W | Yellow cylinder marked "SC3" |