



SANTA CRUZ YACHT CLUB
Made in Santa Cruz Race Week
May 19 – 20, 2018

SAILING INSTRUCTIONS

1. RULES

- 1.1 The regatta shall be governed by the rules as defined in The Racing Rules of Sailing.
- 1.2 Competitors shall wear personal flotation devices while afloat, except when below deck or briefly while changing or adjusting clothing or personal equipment. This changes the preamble to Part 4 and rule 40.
- 1.3 If a boat fails to supply a rating certificate as required in the NOR and competes in the event, the Race Committee shall score that boat DSQ without a hearing. This changes RRS A5.

2. COMMUNICATION WITH COMPETITORS

- 2.1 A Competitors' Meeting will be held at the SCYC Clubhouse on Saturday (5/19/18) at 1100 hours
- 2.3 Official Notices will be posted on the Official Regatta Notice Board located on the upper level, northeast window of the SCYC Clubhouse.
- 2.4 Changes to the Sailing Instructions will be posted by 1130 hours on the day they are to take effect, except any changes to Sailing Instruction 3, Number and Schedule of Races, will be posted by 1900 hours on the day before they take effect.
- 2.5 Signals made ashore will be displayed from the SCYC flagpole. When signal flag AP is displayed from the flagpole, the time for the warning signal will be made no earlier than 60 minutes after the lowering of the AP. This changes RRS Race Signals.
- 2.6 Questions regarding the Sailing Instructions may be submitted in writing to the Race Committee. Questions and written responses will be posted on the Official Regatta Notice Board located at the window of the North East Corner of SCYC Clubhouse.
- 2.7 Race Committee communications will take place on VHF channel 69.

3. NUMBER AND SCHEDULE OF RACES

- 3.1 Five races are scheduled: three races on 05/19/18 and two races on 05/20/18.
- 3.2 The scheduled time of the Warning Signal for the first race each day is 1255 hours.

4. RACING AREA

- 4.1 Races will be conducted on the Monterey Bay within 12 nautical miles of the Walton Lighthouse on the Santa Cruz Harbor jetty (between Davenport and Moss Landing). See attachment C,
- 4.2 The starting area will be located within 1.5 nautical miles of the Walton Lighthouse.

5. COURSES AND MARKS

- 5.1 The courses and marks are described in Attachment A – Official Description of Marks and Courses.
- 5.2 No later than the Warning Signal, a numeral pennant designating the course will be displayed from the Signal Boat.

6. RESTRICTED AREAS

- 6.1 For safety reasons, each of the lines bounded by the following two points is an obstruction:
Seal Rock (near the Santa Cruz Lighthouse) and the closest point ashore.
- 6.2 Boats are prohibited from sailing across any of these lines while racing.

7. THE START
- 7.1 The Starting Line will be between a staff displaying an orange flag on the Starting Line Signal Boat and an inflatable buoy, or round ball or mark S/F.
- 7.2 A boat that starts later than four minutes after her starting signal will be scored DNS. This changes RRS 35.
- 7.3 Class Flags to be used:
 - Code Flag F – PHRF A (<140) Division
 - Code Flag D – PHRF B (>140) Division
8. RECALLS

The Race Committee may hail the sail number(s) of the boat(s) identified on the course side of the starting line after the starting signal, by VHF and/or loud hailer. The failure of a hail, the failure of a boat to hear the hail, or the order of the hails shall not be grounds for redress. This changes RRS 62.1(a).
9. CHANGE OF COURSE AFTER THE START

A change of course after the start will be signaled before the leading boat has begun the leg, although the new mark, identified by a black band, may not then be in position. Any mark to be rounded after rounding the new mark may be relocated to maintain the original course configuration. When in a subsequent change of course a new mark is replaced, it will be replaced with an original mark. This changes RRS 33.
10. THE FINISH

The finishing line will be between a staff displaying an orange flag on a Race Committee boat and an inflatable buoy, or round ball or mark S/F.
11. TIME LIMIT

The Time Limit for each race is 180 minutes. A boat failing to finish within 180 minutes, or within 30 minutes after the first boat in her class sails the course and finishes, will be scored DNF by the Race Committee. This changes RRS 35.
12. TAKING A PENALTY

A boat may take a penalty when she may have broken a rule of Part 2 or RRS 31 while racing. The penalty shall be a One-Turn Penalty. This changes RRS 44.1.
13. PROTESTS AND REQUESTS FOR REDRESS
- 13.1 Protest Forms are available at the SCYC Clubhouse. Protests and requests for redress shall be submitted to the Protest Committee Representative within 60 minutes after the docking of the RC Signal Boat. The boat's docking time and the protest filing deadline will be posted on the Official Notice Board.
- 13.2 The time, place, and parties to all protest and redress hearings will be posted on the Official Notice Board within 60 minutes after the close of the posted filing deadline. This shall serve as notification as required by RRS 63.2 and the US Sailing prescription thereto.
- 13.3 A request to reopen a hearing on the last day of racing must be delivered to the Protest Committee Representative within 60 minutes of the announcement of the Protest Committee's decision (oral or written). This changes RRS 66.
14. DISPOSAL OF TRASH

Boats observed breaking RRS 55 are subject to protest only by the Race Committee or Protest Committee. The penalty for a breach of this rule, which may include disqualification from a race, is at the discretion of the Protest Committee. Sacrificial rubber bands and yarn are not considered trash. This changes RRS 55, 60.1(a) and 64.1(a).
15. SCORING
- 15.1 Two (2) races are required to be completed to constitute a regatta. When fewer than three (3) races have been completed, a boat's regatta score will be the total of her race scores. When three (3) or more races have been completed, a boat's score will be the total of her race scores excluding her worst score. This changes RRS A2.

ATTACHMENT A

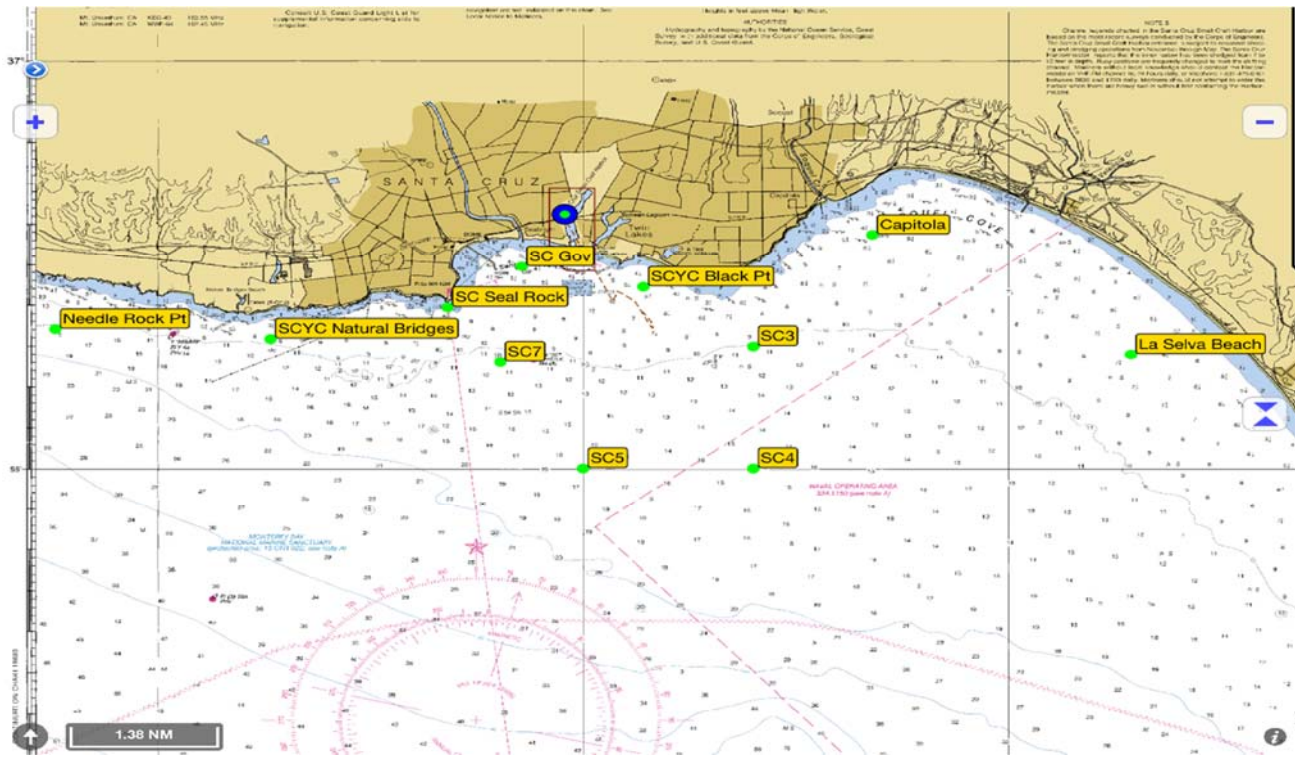
OFFICIAL DESCRIPTION OF MARKS AND COURSES

COURSE	ROUNDING ORDER and DIRECTION	Length (NM)*
0	Start - NB(p) - SC3(p) - SC7 - Mile(p) - BP - Finish	12.32
1	Start - NB(p) - BP(p) - Wharf(p) - BP(p) - Finish	10.44
2	Start - NB(p) - BP(p) - Finish	7.23
3	Start - MC(p) - BP(p) - Finish	4.97
4	Start - Wharf(p) - BP(p) - Wharf(p) - BP(p) - Finish	6.44
5	Start - Wharf(p) - BP(p) - Finish	3.23
6	Start - SC3(p) - Gov(p) - Finish	4.77
7	Start - BP(p) - Wharf(p) - Finish	3.23
8	Start - Mile(stb) - Gov(p) - SC7(p) - Finish	4.32
9	Start - SC7(p) – MB(p) – BP(p) -SC7(p) -Finish	5.66
10	W(p) – L(p) – Finish	TBD
11	W(p) – L(p) – W(p) - Finish	TBD
	(p) = round to Port, (stb) = round to Starboard	

*Distances based on the starting line at Mark S/F

MARK	DESCRIPTION (all rounding marks, except Gate (3g))
1	Inflatable yellow buoy set as a Windward Mark
2	Inflatable yellow buoy set as a Leeward Mark
NB	Natural Bridges 36°56.59'N – 122°03.73'W Unmarked yellow ball
MB	Mile Buoy 36°56.35'N – 122°00.56'W Large RW “SC A” Whistle buoy
BP	Black Pt. 36°57.21'N – 121°59.29'W Unmarked yellow ball
Wharf	Wharf 36°56.87'N – 122°01.25'W Unmarked yellow ball
Gov	Government Buoy 36°57.47'N – 122°00.72'W Large Metal Ball Marked CG
SC3	SC3 36°56.50'N – 121°58.00'W Yellow cylinder marked “SC3”
S/F Start / Finish	S/F 36°57.04'N – 121°59.66'W Unmarked yellow ball
MC	Mitchell Cove 36°56.79'N – 122°02.34'W Unmarked yellow ball
W	Yellow inflatable tetrahedron
L	Orange Inflatable tetrahedron

ATTACHMENT B - RACING AREA



ATTACHMENT C
COURSE DIAGRAM – DROP MARK COURSES

