



PENINSULA YACHT CLUB FELLOWSHIP RACE SERIES 2018

Revised: 3.6.18



Sailing Instructions

Spring Series: April 8th & 29th, May 20th, June 3rd & 24th

Fall Series: Sept 9th & 30th, Oct 7th, 14th & 21st

An Open PHRF Event for Keelboats on Lake Norman Hosted by the Peninsula Yacht Club

1 RULES

The regatta will be governed by the rules as defined in *The Racing Rules of Sailing*.

2 ELIGIBILITY

2.1 Registration is available to anyone who is “a member of a club or other organization affiliated to a World Sailing member national authority”, per RRS 75.1. Competitors not already meeting this requirement may obtain a free online membership in the Scuttlebutt Sailing Club, at www.sailingscuttlebutt.com, recognized by US Sailing for just such circumstances.

2.2 A boat must have a Lake Norman PHRF Rating Certificate assigned by the LNKC Board of Handicappers. If a boat cannot obtain one in time to enter an event or will most probably only compete in that one event, it may be assigned a single event rating by at least two members of the Board of Handicappers representing at least two LNKC Clubs.

3 ENTRY and FEES

3.1 Competitors may enter at any time during the Series by logging on to Regatta Network <http://www.regattanetwork.com/event/16430> and completing the registration form; or by submitting a completed Registration Form (below) to the PYC Ship's Store, online, by email, or hand delivered to the RC.

3.2 Competitors shall select one of the available classes upon registration: Sport Boat, Traditional Spinnaker or Non-Spinnaker.

3.3 No entry fee is required.

4 NOTICES TO COMPETITORS

Notices to Competitors will be posted on the lower level of the PYC. Email and text may also be used to contact registered vessels due to cancellation or other important information. Changes to the sailing instructions may be made on the water through VHF radio broadcasts.

5 SIGNALS MADE ASHORE

Signals made ashore will be displayed from the flagpole located by the PYC waterfront. If a postponement is signaled ashore, the warning signal will be made not less than 30 minutes after flag AP is lowered. This changes Race Signals AP.

6 SCHEDULE

6.1 Ten races are scheduled. Races are scheduled as follows:

Day & Date	Time	Event
<u>Spring Series</u>		
Sun. April 8	2:25PM	Warning Signal
Sun. April 29	2:25PM	Warning Signal
Sun. May 20	2:25PM	Warning Signal
Sun. June 3	2:25PM	Warning Signal
Sun. June 24	2:25PM	Warning Signal
<u>Fall Series</u>		
Sun. Sept. 9	2:25PM	Warning Signal
Sun. Sept 30	2:25PM	Warning Signal
Sun. Oct 7	2:25PM	Warning Signal
Sun. Oct 14	2:25PM	Warning Signal
Sun. Oct 21	2:25PM	Warning Signal

6.2 A Skipper's Meeting will be held at 12:30PM on Sunday, April 8 at the patio outside the Commodore's Room at PYC to explain the changes in the 2018 Fellowship Series Sailing Instructions.

6.3 Competitors are encouraged to gather on the PYC veranda after each race for complimentary beverages and a debrief of the day's race.

7 RACING AREA

Competition will be held on Lake Norman with the starting area as far north as Channel Marker 3 and as far south as Channel Marker 1A.

8 COURSES and MARKS

The course[s] will be:

W2 - 2 legs

W3 - 3 legs, finish at weather mark

W4 - 4 legs

WL - 3 legs, leeward mark set to leeward of the signal boat, Start/Finish in the middle

T - Triangle

T2 - Triangle twice around

TK - Triangle with Finish in the PYC cove after rounding the leeward mark

The course will be designated by black letters/numeral on a white board. The starting mark will be either an orange tetrahedron or a red ball. All other marks will be orange tetrahedrons. The attached diagram shows the courses, course designations, the marks in order and the rounding direction of each mark.

9 MANDATORY CHECK-IN

Each boat shall check in by sailing by the stern of the Race Committee Signal Boat on starboard tack and hailing its sail number before the warning signal for each race. It shall continue to do so until acknowledged by the Race Committee. Failure to check in may result in not being scored.

10 THE START

10.1 Races will be started using RRS 26.

10.2 There will be one start for all Classes. The Class Flag will be international code flag 1.

10.2 The starting and finishing lines will be between an orange flag on the signal boat, or at the end of 'K' Dock at PYC, and a nearby mark. For course W3 the finish line will be between the weather mark and an orange flag on a nearby race committee boat.

11 TIME LIMIT

The Race Committee will attempt to set a course that can be completed by most competitors within approximately one hour. The time limit will be one and a half hours. If any competitor finishes within the time limit, all competitors remaining on the course after one and a half hours will be scored with an average of the remaining possible scores.

12 PENALTY TURNS

The first two sentences of Rule 44.1 are changed to: " A boat may take a One-Turn Penalty when it may have broken a rule of Part 2 or rule 31 while racing. This rule invokes RRS US Sailing Prescription Appendix V Rule V1.

13 PROTESTS

All competitors are urged to resolve infractions of the rules in accordance with RRS 44 as revised in Sailing Instruction 12. If necessary, formal protests may be submitted in writing on a U. S. Sailing Standard Protest Form to the Race Committee (on the PYC veranda) by 4:30 PM on the evening of the race. A Protest Committee will be convened to hear the protest following the next regularly schedule Series race (except for the last race of the series when the Protest Committee will convene as soon as practical after receipt of the protest).

14 SCORING

The Time-on-Time Low Point Scoring System in RRS A4 shall apply to each race.

15 RADIO COMMUNICATIONS

Use of hand held VHF radios will be permitted for communication from the race committee to competitors on channel 69. The race committee intends to use VHF radio to identify OCS (On Course Side of the line) boats after starts and otherwise communicate with the fleet on the water. Failure to receive a hail, for a hail to be made, the order of hails made, or receive other communications to the fleet shall not be cause for redress. This instruction changes RRS 41 and 62.1.

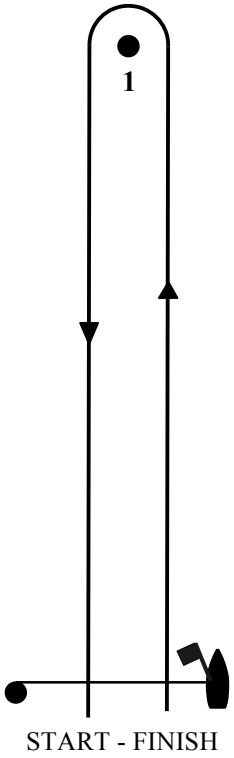
16 RESULTS

Each evening's results will be made available to the competitors as soon as possible. If possible, scoring will take place on the PYC veranda and posted on Regatta Network at: <http://www.regattanetwork.com/event/16430>.

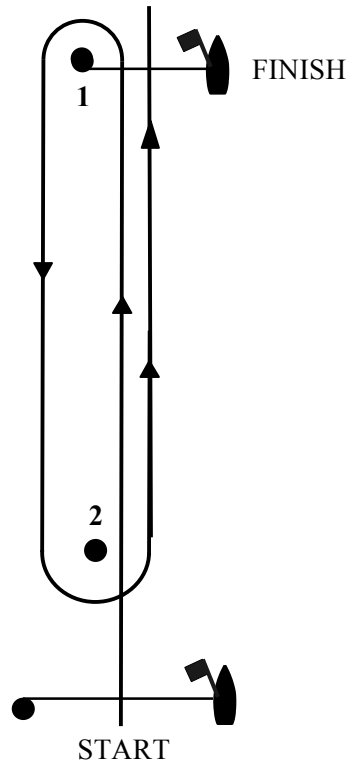
QUESTIONS? Contact PYC Sail Fleet Captain at jimhillnc@gmail.com or by phone at 585-820-4666(m).

PYC Fellowship Race Series 2018 – Course Diagrams

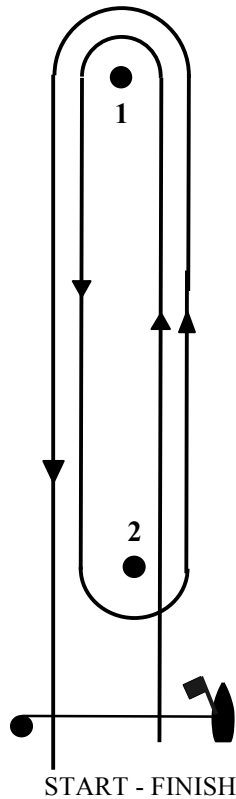
W2 – 2 Legs
Start – 1 – Finish



W3 – 3 Legs
Start – 1 – 2 – Finish



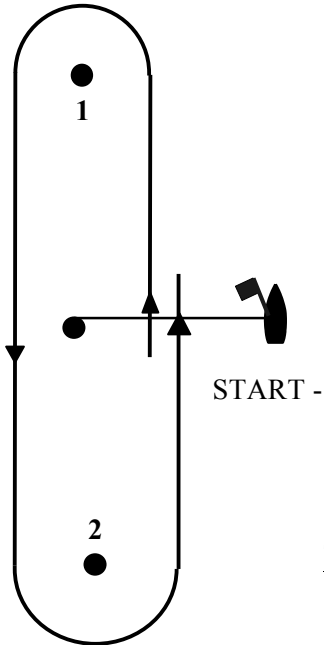
W4 – 4 Legs
Start – 1 – 2 – 1 - Finish



PYC Fellowship Race Series 2018 – Course Diagrams

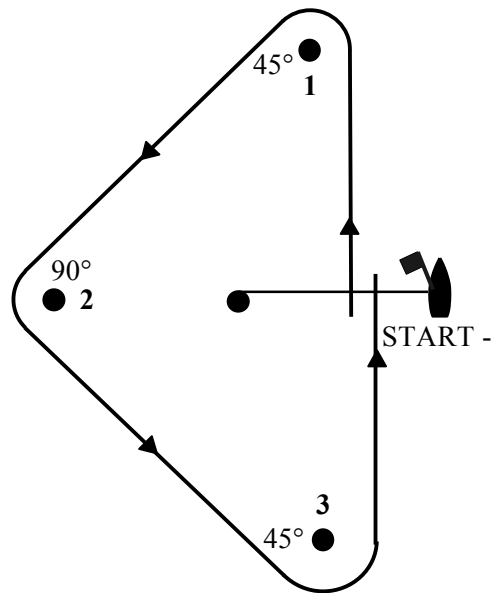
WL – Windward-Leeward

Start – 1 – 2 – Finish



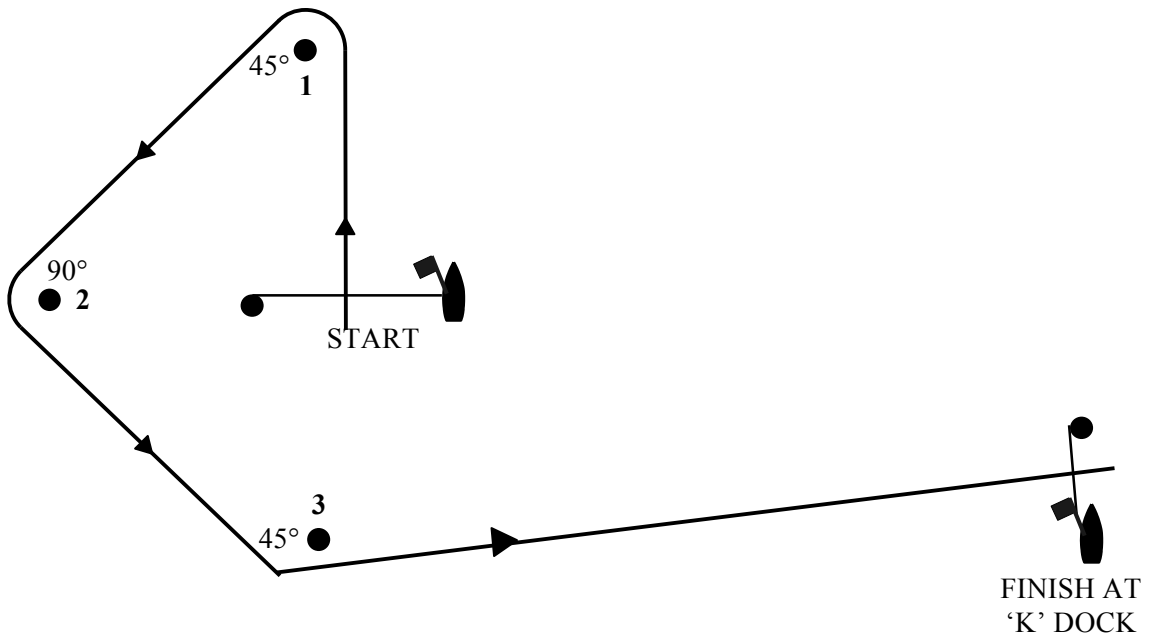
T - Triangle

Start – 1 – 2 – 3 – Finish



TK – Triangle with Finish
at 'K' Dock

Start – 1 – 2 – 3 - Finish





PENINSULA YACHT CLUB FELLOWSHIP RACE SERIES 2018



REGISTRATION

Skipper's Name _____

Skipper's Home Phone _____

Skipper's Cell Phone¹ _____

Skipper's E-mail¹ _____

Boat Name _____

Boat Make/Model _____

Length Overall _____

Sail Number _____

CLASS (Sport Boat, Trad. Spin, Non-Spin) _____

LNKC PHRF Rating* _____

LNKC PHRF Certificate #* _____

*Entries without current LNKC PHRF ratings must apply to Lake Norman Keelboat Council (www.lnkc.com) for an official rating.

Schedule

	April 8
	April 29
Spring	May 20
	June 3
	June 24
	September 9
	September 30
Fall	October 7
	October 14
	October 21

*Make up days are at the discretion of the RC Chairperson. Notice of make up days will be sent via email to registered competitors and posted on the PYC website.

Release, Waiver and Assumption of Risk

I, myself, and my heirs assigns release and waive any claim against the Peninsula Yacht Club, PYC Holdings LLC, their agents and any other persons assisting in this Series for any and all claims directly or indirectly as a participant in the Peninsula Yacht Club Fellowship Race Series.

I agree to be bound by the Racing Rules of Sailing and by all other rules that govern this event. In consideration of this entry acceptance, I hereby agree that the safety of my yacht and crew and the decision to continue to race is my responsibility.

Signature:

Date :

Completed and signed entry forms may be submitted at the PYC Ship's Store, mailed to Peninsula Yacht Club, 18501 Harbor Light Boulevard, Cornelius, NC 28031, or emailed to Jim Hill at jimhillnc@gmail.com. Or, just bring it by the Race Committee Boat on race day like you usually do.

¹ Mobile numbers and email will be used in conjunction with this event to notify participants of results, cancellations, and other event specific communications. If you do not wish to receive email or text please note it on this form in the box provided for that information.