

CRAB Cup

CBYRA Sanction #344

Saturday, 18 August 2018

ORGANIZING AUTHORITY

Eastport Yacht Club



TITLE SPONSOR

**VOLVO CARS
ANNAPOLIS**

FOUNDING SPONSOR



SAILING INSTRUCTIONS

1 RULES

- 1.1 Racing shall be governed by the rules as defined in the *Racing Rules of Sailing* (RRS).
- 1.2 All boats shall comply with their Class Rules.
- 1.3 Boats registered in the **CRAB** class shall not use spinnakers. All other classes shall race in accordance with their Class Rules.
- 1.4 The notation "[DP]" in a rule in these Sailing Instructions (SIs) means that the penalty for a breach of that rule may, at the discretion of the Protest Committee, be less than disqualification.
- 1.5 The notation "[NP]" in a rule in these Sailing Instructions means that a boat may not protest another boat for breaking that rule. This changes RRS 60.1(a).

2 ENTRIES

- 2.1 The regatta is open to all competitors who register with the organizing authority and pay the entry fee prior to 1200 hours on Thursday, 16 August 2018.
- 2.2 Boats in the CRAB, PHRF, and One-Design (excluding Harbor 20) classes shall sail a **PURSUIT** race.

3 NOTICES TO COMPETITORS

Notices to Competitors shall be posted on the Official Notice Board located outside, near the ground floor rear entryway doors and "Sparky's Shed" on the Eastport Yacht Club (EYC) grounds.

4 CHANGES TO THE SAILING INSTRUCTIONS

Any changes in the SIs shall be posted before 0800 hours on the day it will take effect, except that any change in the schedule of races shall be posted by 2000 hours on the day before it takes effect.

5 SIGNALS MADE ASHORE

- 5.1 Signals made ashore shall be displayed from the EYC flagpole, located on the waterside of the clubhouse.
- 5.2 When flag AP is displayed ashore, "1 minute" is replaced with "not less than sixty (60) minutes in the race signal AP. This changes RRS Race Signals.

6 SCHEDULE OF RACES

6.1 The schedule of events is:

Thu, 16 August	2000	Entry & registration closes
Fri, 17 August	1730	Individual start times for the pursuit race posted
	1730-1930	Skippers bags available at EYC
Sat, 18 August	0830-1000	Skippers bags available at EYC
	1100	Rendezvous
	1200	Warning signal for first starter in the pursuit race
		Warning signal for Harbor 20 class will be made as soon as practicable after the final pursuit racer starts

- 6.2 Competitors are to rendezvous at 1100 hours in the vicinity of **R2** (FI R, 2.5s).
- 6.3 No Warning signal shall be made after 1330 hours.





7 CLASS FLAGS

[NP] All PHRF and one-design racers shall display from the backstay their class flag as specified in paragraph 4 of the CBYRA Green Book General Sailing Instructions. Competitors in the CRAB class shall display the CRAB burgee from the backstay. The CRAB, J/70, Viper 640, and HARBOR 20 (FULL CREW) classes are not required to display a class flag. The HARBOR 20 (SINGLEHANDED) class shall display a yellow flag. Competitors in the ALERION 28 EXPRESS class shall display the Alerion class flag from the backstay.

8 RACING AREA

The racing area shall be in the vicinity of R2 (FI R, 2.5s), at the start of the channel to the Severn River and Annapolis on the Chesapeake Bay.

9 CHECK IN

9.1 The RC shall use a separate check-in vessel. The vessel shall fly a solid yellow flag and shall be stationed approximately 100 yards west of the RC Signal Vessel. Do not attempt to check in with the Race Committee (RC) Signal Vessel.

9.2 [DP] [NP] Prior to starting, each boat shall check in by sailing past the stern of the RC Check-In Vessel on starboard tack, hail the sail number, and be acknowledged by the RC.

10 THE COURSE

10.1 For the PURSUIT race, RC shall designate one (1) of two (2) possible courses to be sailed (refer to FIGURE 1). The designated course will be identified on a board displayed on the check-in vessel and the Signal Vessel. The board will show either "A" or "B" to indicate which course shall be sailed. The Signal Vessel will also attempt to repeatedly state the course designation on VHF channel 73 during the start sequences. The two (2) possible courses are:

Course "A" START (R2) – G87 – GC SR – "O" – FINISH (R2) Course "B" START (R2) – G87 – "Y" – "O" – FINISH (R2)

10.2 The distance for Course "A" is 7.5 nm. The distance for Course "B" is 5.0 nm.
10.3 The HARBOR 20 (FULL CREW) and HARBOR 20 (SINGLEHANDED) classes shall refer to Attachment A.

11 MARKS

11.1 For the PURSUIT race, the marks have the following descriptions and Lat/Long coordinates.

Table with 5 columns: R2, G87, GC SR, "Y", "O". Each column contains a description and coordinates (e.g., R2, FI 2.5s, N 38° 56.50', W 076° 25.56').

11.2 The HARBOR 20 (FULL CREW) and HARBOR 20 (SINGLEHANDED) classes shall refer to Attachment A.

12 THE START

12.1 This shall be a pursuit race with a reverse PHRF Time over Distance (ToD) starting order. The boat with the slowest rating (highest PHRF number) shall start first and the fastest rating (lowest PHRF number) shall start last.

12.2 The HARBOR 20 (FULL CREW) and HARBOR 20 (SINGLEHANDED) classes shall refer to Attachment A.

12.3 The RC shall signal the starting sequence as follows (this changes RRS 26):

Table with 3 columns: TIME, SIGNAL, FLAG / SOUND. Rows include 1200 (Warning signal), 1201 (Preparatory signal), 1204 (Lower code flag), 1205 (Starting signal for first boat), and Each subsequent start time (Starting signal for remaining boats).

12.4 For the purposes of "racing," each boat's Preparatory signal is four (4) minutes prior to her scheduled start.





- 12.5 The start times for all boats shall be based on their PHRF ToD handicap. The race shall use GPS time synchronization. The RC will attempt to broadcast a five (5) second countdown for each starting time on VHF channel 73. Failure of the RC to announce a start time will not be grounds for redress. This changes RRS 41 and 62.1(a).
- 12.6 The start time for each boat shall be available at EYC no later than 1730 hours on Friday, 17 August 2018, and will be posted on the EYC website.
- 12.7 The start line shall be between a staff displaying an orange flag on the RC vessel and **R2**.
- 12.8 **[DP]** After the Warning signal for the first start, boats shall stay clear of the starting area until four (4) minutes before their scheduled starting time.
- 12.9 RRS 29.1 is replaced with: "When at a boat's starting signal any part of her hull, crew or equipment is On Course Side (OCS) of the starting line, the race committee shall promptly hail her number on VHF channel 73. **Individual Recall, code flag "X," will not be used.**"
- 12.10 **[DP] [NP]** A boat that is OCS shall continue sailing to the first mark and shall not sail back to restart, and will be considered as starting properly. This changes RRS 28.1. She will receive a scoring penalty of ten (10) minutes plus the amount of time that she is early for her start. This changes RRS 44.3(c).
- 12.11 In the event a postponement is signaled on the water, the RC shall announce the revised start times on VHF channel 73 before lowering flag AP.

13 THE FINISH

- 13.1 For the **PURSUIT** race, the finish line shall be between a staff displaying an orange flag on the RC vessel and **R2**.
- 13.2 The RC may shorten the course at any rounding mark in accordance with RRS 32.
- 13.3 The **HARBOR 20 (FULL CREW)** and **HARBOR 20 (SINGLEHANDED)** classes shall refer to Attachment A.

14 PENALTY SYSTEM

- 14.1 RRS Appendix V1, Penalty at the Time of An Incident, will apply.
- 14.2 RRS Appendix V2, Penalty Taken After A Race, will apply, and is changed to: "After a race, a boat that may have broken one or more rules of Part 2 or RRS 31 in an incident while racing may take a Post-Race Penalty for that incident. A boat takes the penalty by delivering a written notice to the race office or sending an email to race.committee@eastportyc.org that identifies the race number and when and where the incident occurred. The penalty shall be calculated as stated in RRS 44.3(c). The written notice must be delivered at least fifteen (15) minutes before the protest time limit."

15 TIME LIMIT

- 15.1 For the **PURSUIT** race, if no boat finishes within 3-1/2 hours of the start time of **the first boat**, the race shall be abandoned.
- 15.2 The **HARBOR 20 (FULL CREW)** and **HARBOR 20 (SINGLEHANDED)** classes shall refer to Attachment A.
- 15.3 Boats failing to finish within ninety (90) minutes after the first boat that sails the course and finishes shall be scored Did Not Finish. This changes RRS 35 and A4.
- 15.4 Boats leaving the course without finishing shall promptly notify RC on VHF channel 73, or via the EYC cell phone, (443) 875-3801.

16 REPORT OF THE RACE COMMITTEE

The Report of the Race Committee regarding incidents on the water shall be posted on the Official Notice Board no later than fifteen (15) minutes after the Signal Vessel docks. The report shall include scoring-related actions (DNC, DNS, OCS, ZFP, UFD, BFD, DNF, DNE) and the Signal Vessel dock time.

17 SCORING INQUIRIES, PROTESTS, AND REQUESTS FOR REDRESS

- 17.1 As a courtesy, a boat intending to protest an incident that occurred in the racing area is encouraged to notify the RC finish boat by hail, including identifying the boat(s) she intends to protest.
- 17.2 A boat requesting clarification about the Report of the Race Committee must submit a Scoring Inquiry Form within the protest time limit and go through the scoring inquiry process prior to filing a request for redress. A boat requesting clarification about her score(s), based on posted results must submit a Scoring Inquiry Form as soon as reasonably possible after learning of the posting and go through the scoring inquiry process prior to filing a request for redress. If after going through the scoring inquiry process, the competitor wishes to file for redress, the request must be delivered as soon as reasonably possible after learning of the outcome of the scoring inquiry hearing.





- 17.3 Scoring Inquiries and Protest Forms are available at, and shall be filed with, the RC Office (first floor, on the waterside of the building). For each class, the protest time limit is sixty (60) minutes after the RC Signal Vessel dock time. This posting constitutes the notification required in RRS 61.1b and 63.2. The time limit for a request for redress based on an incident in the racing area shall be the protest time limit. This changes RRS 62.2.
- 17.4 Notices of hearing shall be posted no later than fifteen (15) minutes after the protest time limit to inform competitors of hearings in which they are parties or named as witnesses. Hearings will be held at EYC beginning approximately thirty (30) minutes after the protest time limit. The Protest Committee will attempt to hear protests in the order of receipt by the Protest Secretary. Representatives of boats who are parties to a hearing shall remain on call in the vicinity of the protest room.
- 17.5 When the RC or Protest Committee protests a boat, the requirements of RRS 61.1(b) to notify the boat may be met by posting a list of protested boats on the Official Notice Board and the Protest Board before the end of the protest time limit.

18 SAFETY

- 18.1 **[DP] [NP]** A boat that retires from a race shall notify the RC as soon as possible either by hail or on VHF channel 73, or via the EYC cell phone, (443) 875-3801.
- 18.2 **[DP] [NP]** A boat shall not exercise right of way, cross in proximity to, or interfere with reasonable transit of the race area by commercial ships, tugs, or barges. Boats must take evasive action well in advance of a potentially dangerous situation. The US Coast Guard, ship captains, and bay pilots have been encouraged to report any incident they observe.
- 18.3 **[NP]** A boat without way may use any means of propulsion to avoid underway commercial traffic, provided:
 - (a) the boat does not gain an advantage;
 - (b) using the propulsion is the boat's only means of avoiding the commercial traffic; and,
 - (c) the boat submits a report (in writing or by email) to the RC by the protest filing deadline that describes the incident and the boat's actions.
- 18.4 **[NP]** The RC or Protest Committee may protest a boat for SI 18.2 and 18.3 based on information received from any source. The protest time limit does not apply. This changes RRS 60.2, 60.3, and RRS 61.3.

19 SCORING

- 19.1 PHRF ratings will be in accordance with the PHRF Time over Distance Circular Random rating, and boats will be scored in the order of finish.
- 19.2 The **HARBOR 20 (FULL CREW)** and **HARBOR 20 (SINGLEHANDED)** classes shall refer to Attachment A.
- 19.3 One-design scoring will be granted for any class with at least six (6) entries.

20 RADIO COMMUNICATIONS

- 20.1 **[DP] [NP]** Competitors shall have a working VHF radio capable of communicating on VHF channels 9, 13, 16, and 73.
- 20.2 RC shall communicate with competitors on VHF channel 73.
- 20.3 Boats are encouraged to make contact with commercial traffic on VHF channel 13, as required for safety.
- 20.4 Failure to hear a broadcast, the RC's failure to broadcast, or the content of any broadcast shall not be grounds for redress. This changes RRS 41 and 62.1(a).
- 20.5 Specially-designated and equipped CRAB boats may communicate with their designated safety boat.

21 DISPOSAL OF TRASH

[DP] [NP] This is a Clean Race. All competitors are strongly encouraged to use multi-use water bottles instead of disposable water bottles and to recycle whenever possible. RRS 55 prohibits placing trash in the water.



22 DISCLAIMER OF LIABILITY

Competitors participate in the CRAB Cup entirely at their own risk; see RRS 4. The organizing authority will accept no liability for material damage, personal injury, or death sustained in conjunction with or prior to, during, or after the event.

23 INSURANCE

[DP] [NP] Each boat shall be insured with valid third party liability insurance with a minimum coverage of \$300,000.





24 SOCIAL

- 24.1 A post-race party and trophy presentation will be held at EYC, 317 First Street, Annapolis, immediately after racing concludes and is open to participants and CRAB supporters. A bar will open at 1600 hours. Food service and a live band will be from 1700-2000 hours. Entry, food, and drink tickets will be available at the party.
- 24.2 Prizes for 1st, 2nd, and 3rd Places will be awarded for the Overall finish positions in the pursuit race.
- 24.3 Special trophies for 1st and 2nd Places will be awarded in the **CRAB** class.
- 24.4 Prizes in all classes (except for the **CRAB** class) will be as follows:
 - 1st and 2nd Places for six (6) or more entries; and,
 - 1st, 2nd, 3rd Place for seven (7) or more entries.
- 24.5 The North Sails Fleet Award will be presented to five (5) boats with the combined highest finish and top Skipper's challenge fundraising. The two (2) scores will be combined to determine the award recipients.
- 24.6 Participants who compete in all three (3) Annapolis-based charity regattas – Leukemia Cup, CRAB Cup, and Hospice Cup – will be eligible for the Weems & Plath Triple Crown Trophy, to be awarded at the end of the season. The final standings will be a combination of race and fundraising results across all events.

**VOLVO CARS
ANNAPOLIS**

TITLE SPONSOR



FOUNDING SPONSOR



HOSTING SPONSOR



PLATINUM SPONSORS



GOLD SPONSOR





CRAB Cup

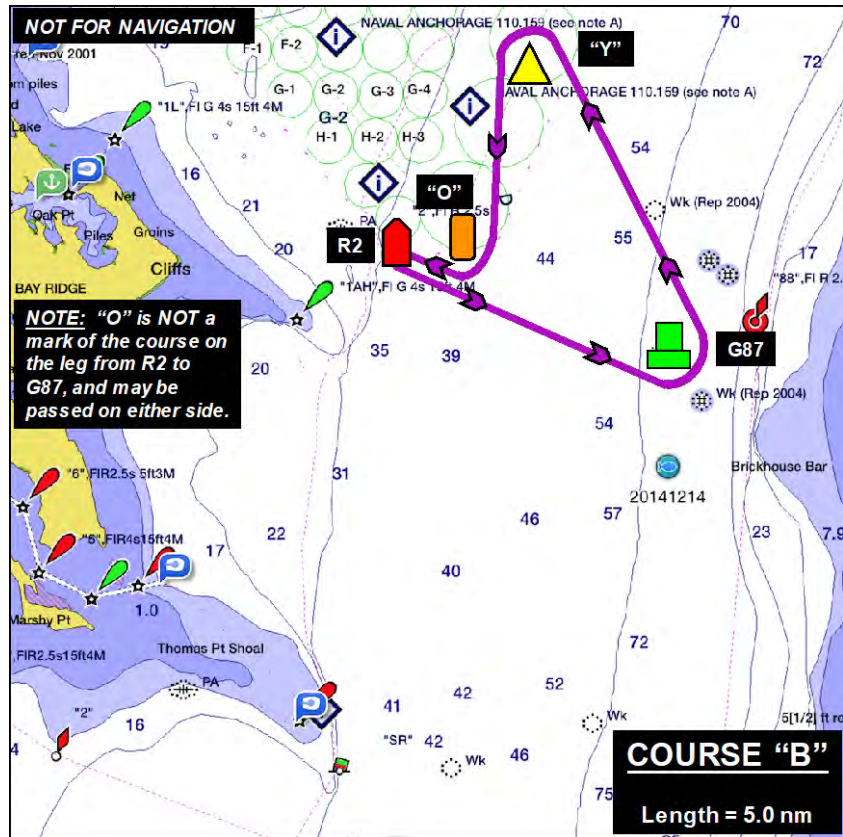
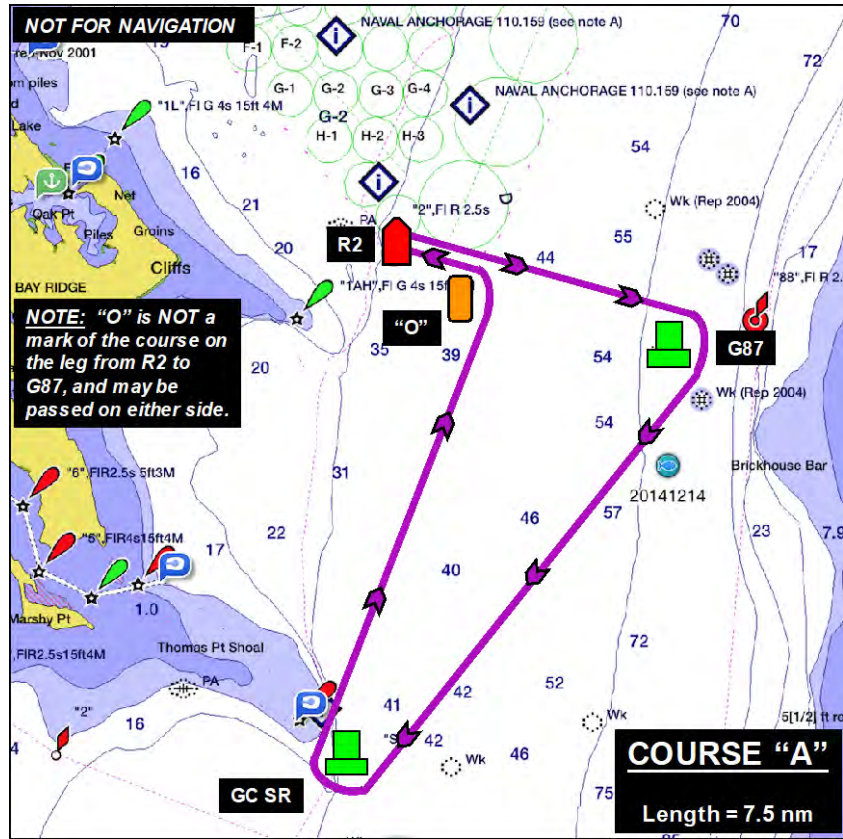
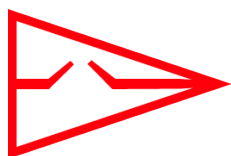


FIGURE 1. Pursuit Race Course Diagrams





CRAB Cup

Saturday, 18 August 2018

ORGANIZING AUTHORITY
Eastport Yacht Club



TITLE SPONSOR

VOLVO CARS
ANNAPOLIS

FOUNDING SPONSOR



ATTACHMENT A for the HARBOR 20 (FULL CREW) & HARBOR 20 (SINGLEHANDED) Classes

1 THE COURSE

- 1.1 The course, shown in FIGURE A-1, shall be:
START (at R2) – R14 – G5 – G13 – FINISH (at G 1SC)
- 1.2 The marks shall be rounded in the following manner:
R14 shall be kept to PORT;
G5 shall be kept to PORT;
G13 shall be kept to PORT.
- 1.3 The Horn Point Shoal Mark (HP, FI W 6.0s) and the Greenbury Point Dolphin (A, FI Y 2.5s) shall be passed on the channel side.

2 MARKS

For the **HARBOR 20 (FULL CREW)** and **HARBOR 20 (SINGLEHANDED)** classes, the marks have the following Lat/Long coordinates.

R2	R14	G5	G13	G 1SC
<u>R2, FI 2.5s</u>	<u>R14</u>	<u>G5, FI 4.0s</u>	<u>G13</u>	<u>G 1SC</u>
N 38° 56.50'	N 38° 59.11'	N 38° 58.30'	N 38° 58.94'	N 38° 58.89'
W 076° 25.56'	W 076° 28.35'	W 076° 27.72'	W 076° 28.40'	W 076° 28.80'

3 THE START

- 3.1 The RC will attempt to signal a start sequence for the Harbor 20 classes as soon as possible after completing the start for all pursuit race boats.
- 3.2 The RC shall use a single start sequence for a consolidated start for both the **HARBOR 20 (FULL CREW)** and **HARBOR 20 (SINGLEHANDED)** classes. The RC shall signal a wakeup call with multiple sounds, approximately one (1) minute prior to the Warning signal.
- 3.3 The RC shall use a large EYC burgee as the **HARBOR 20 (FULL CREW)** and **HARBOR 20 (SINGLEHANDED)** Warning/class flag.
- 3.4 Recalls shall be signaled in accordance with RRS 29.
- 3.5 The RC may attempt to notify boats identified as on the course side by announcing their sail numbers on VHF channel 73. Failure to transmit or receive such notification will not be grounds for redress. This changes RRS 41 and 62.1(a).





4 THE FINISH

- 4.1 The finish line shall be between a staff displaying an orange flag on the NW corner of the EYC deck and "G1SC" at the mouth of Spa Creek.
- 4.2 **[DP]** When finishing, "G1SC" shall be left to starboard. Boats that have finished shall clear the finish area completely and not sail back through the finish line. Boats leaving Spa Creek after crossing the finish line shall pass to the north of "G1SC." This changes RRS 28.1.

5 TIME LIMIT

- 5.1 If no boat in either of the **HARBOR 20** class finishes within 2-1/2 hours of the start, the race shall be abandoned.
- 5.2 Boats failing to finish within one (1) hour after the first **HARBOR 20 (FULL CREW)** or **HARBOR 20 (SINGLEHANDED)** that sails the course and finishes shall be scored Did Not Finish. This changes RRS 35 and A4. Boats leaving the course without finishing shall promptly notify the RC on VHF channel 73.

6 SCORING

Boats will be scored in the order of finish, within their **FULL CREW** or **SINGLEHANDED** class.

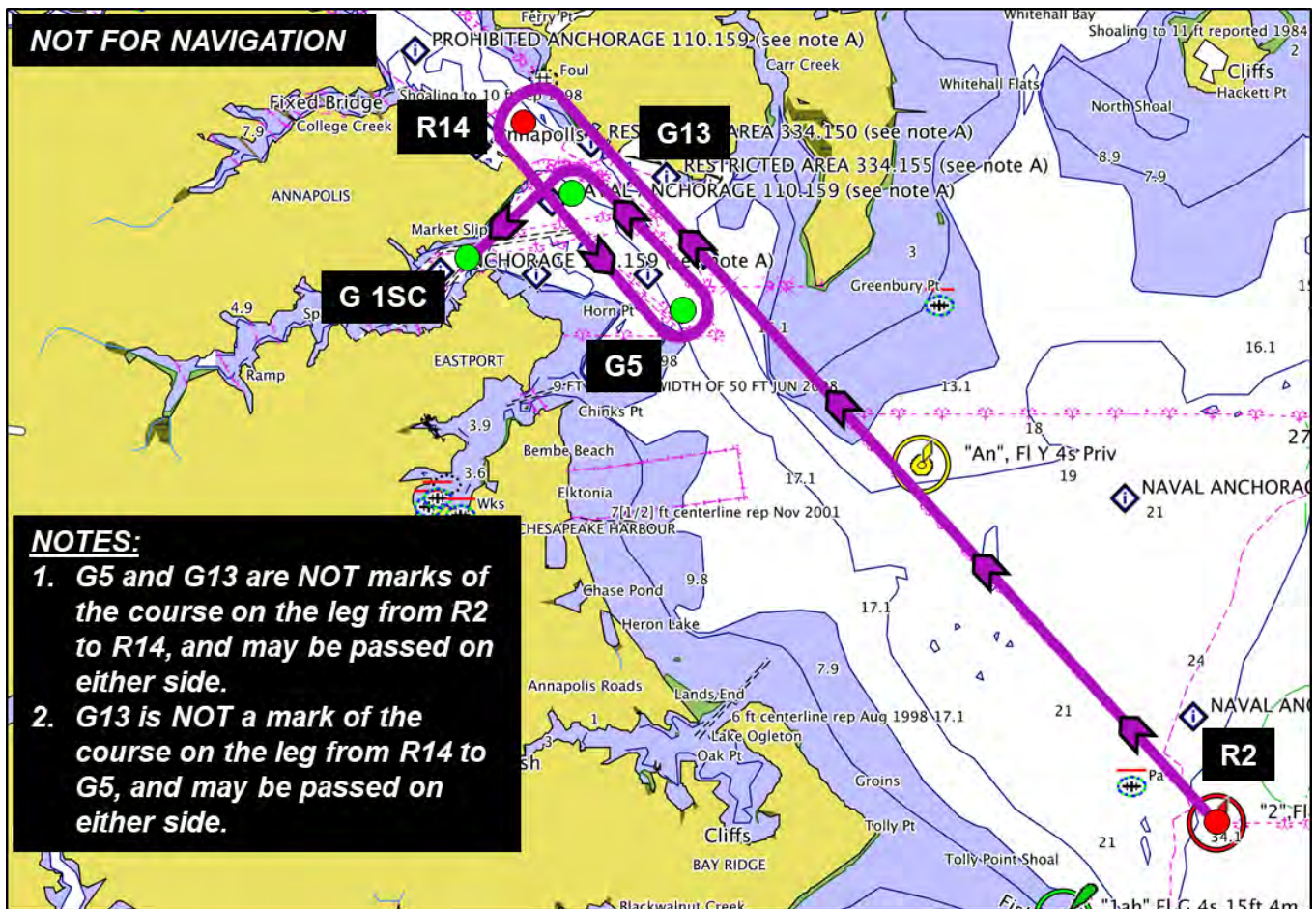


FIGURE A-1. HARBOR 20 Race Course Diagram

