

West River Sailing Club Spring Regatta

Galesville, MD

May 5 and 6, 2018

NOTICE OF RACE

Rev. 3 4/29/2018

1 RULES

- 1.1 The regatta will be governed by the rules as defined in *The Racing Rules of Sailing*.

2 ELIGIBILITY AND ENTRY

- 2.1 The regatta is open to boats of the International 505, A-Class catamaran, Nacra 20/F18 catamaran, and F16 catamaran classes. The Nacra 20/F18 and F16 catamaran classes will race together as an Open Class using the SCHRS handicap system.

- 2.2 Entry registration:

Regular online registration ends at midnight on Thursday, May 3, at the follow web site:

<http://www.regattanetwork.com/event/16574>

Please register online it greatly helps the race organizers. After regular online registration closes, a fee will be charged for late registration, see below.

3 FEES

- 3.1 Required fees are as follows:

<u>Registration Type</u>	<u>Fee</u>
A-Cat and single-handed F16	\$50 includes one (1) Saturday dinner
505, Nacra 20/F18, and double-handed F16	\$70 includes two (2) Saturday dinners
US Sailing member discount	\$5
Late (on-site) registration add	\$10
Extra dinner	\$16 per person

Cancellation prior to the close of onsite registration will be refunded, minus a 10% fee.

4 FOOD AND BEVERAGES

Continental breakfast is included in the registration fee both days. Additional food will be available for purchase Saturday and Sunday morning and Sunday afternoon. Saturday dinner(s) are included for the racers in the registration fee and extra dinners are available for purchase, as outlined above.

A cash bar will be available after racing Saturday and Sunday.

Please note that alcoholic beverages must be obtained from the bar as a condition of our liquor license.

5 SCHEDULE

5.1 Saturday

0830 Late on-site registration opens in the clubhouse

0915 Late on-site registration closed

0930 Competitors' meeting (at flagpole or inside if raining)

First Warning Signal:

1100 A-Cat and Catamaran Open Classes

1200 (noon) International 505 Class

The Race Committee (RC) will announce the order of starts for the first race at the competitors' meeting.

5.2 Sunday

1030 First warning signal for all classes

1430 No races will start after this time

Awards will follow racing.

5.3 Number of Races:

There is no limit to the number of races. The committee will attempt to maximize racing for the conditions available.

6 SAILING INSTRUCTIONS/COMPETITORS' MEETING

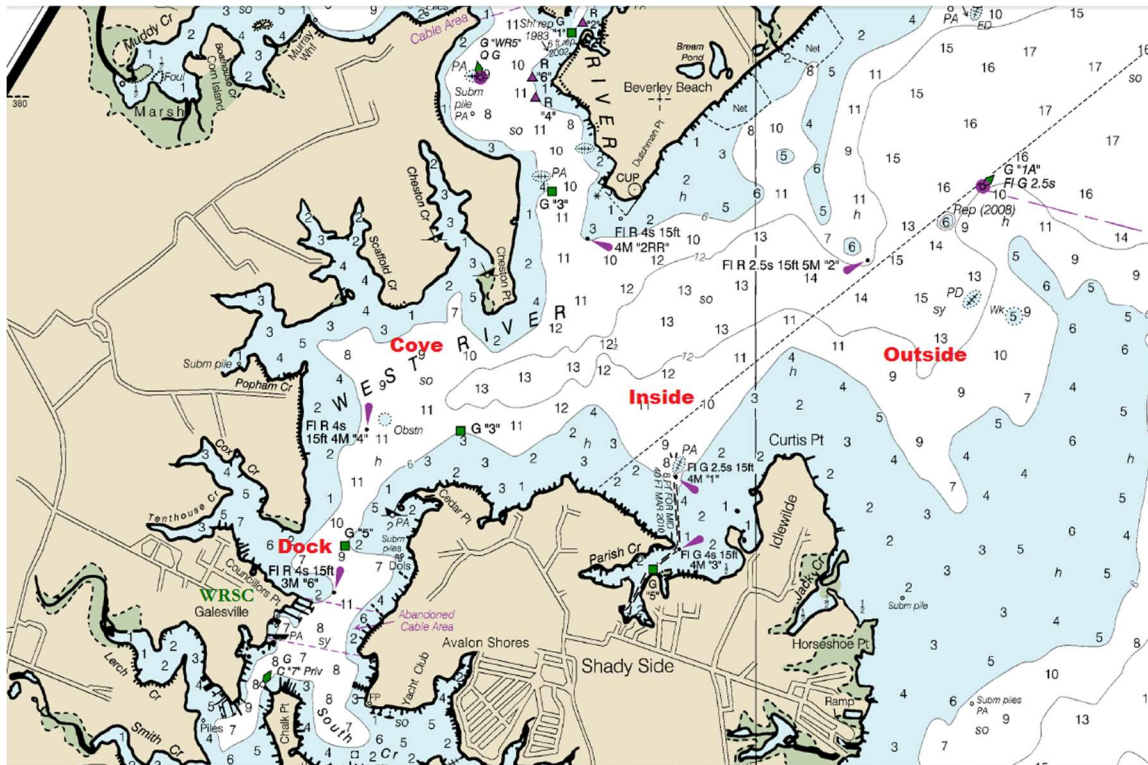
6.1 The Sailing Instructions (SIs) will be available on the US Sailing website, see link above, by 0900 the day before the racing begins. **Limited copies will be available on site.**

6.2 A competitors' meeting to review any changes to the Sailing Instructions will be held on Saturday. See schedule above for meeting time. Changes to the SIs will be posted after the meeting on the notice board.

7 VENUE AND PARKING

7.1 The regatta will be held at the West River Sailing Club (WRSC) in Galesville Maryland. Directions to WRSC are located on the WRSC Web Site: <http://www.westriversc.org/>

- 7.2 The racing area shall be finalized by the RC on race day. WRSC typically races on the West River or on the west side of the bay just outside of the river entrance.



- 7.3 Due to the expected high volume of event participants and race committee volunteers, off-site parking has been arranged. Please see Attachment A for parking procedures and directions.

8 THE COURSES

- 8.1 The courses will be around racing marks set by the RC, as described in the Sailing Instructions, with course length set for a race duration of about 20-40 minutes.

9 PENALTY SYSTEM

- 9.1 For all classes RRS 44.1 is changed so that the Two-Turn Penalty is replaced by the One-Turn Penalty.

10 SCORING

- 10.1 One (1) race is required to be completed to constitute a series.
- (a) When fewer than 5 races have been completed, a boat's series score will be the total of her race scores.
 - (b) When from 5 to 11 races have been completed, a boat's series score will be the total of her race scores excluding her worst score.

- (c) When 12 or more races have been completed, a boat's series score will be the total of her race scores excluding her two worst scores.

11 SUPPORT BOATS

- 11.1 Support boats shall be marked with the letters WRSC or as described at the competitors' meeting.

12 RADIO COMMUNICATION

- 12.1 Except in an emergency, a boat that is racing shall not make voice or data transmissions and shall not receive voice or data communications that is not available to all boats. This restriction also applies to mobile telephones but does not apply to communications to notify RC that a competitor is leaving the race area.

13 PRIZES

- 13.1 For each class, prizes will be given to the first-place finisher in classes with three or fewer entries, the first two finishers in classes with six or fewer entries, and the first three finishers in classes with seven or more entries. Prizes for the A-Cat class will be awarded for Foiling and Classic boats as separate classes.

14 DISCLAIMER OF LIABILITY

- 14.1 Competitors participate in the regatta entirely at their own risk. See RRS 4, Decision to Race. The organizing authority will not accept any liability for material damage or personal injury or death sustained in conjunction with or prior to, during, or after the regatta.

15 FURTHER INFORMATION

- 15.1 For further information please contact Constantine Seremetis at mail@seremetis.com or 202-363-8020.

West River Sailing Club Spring Regatta

Attachment A

Parking Procedures and Directions

We are expecting a high volume of cars and trailers at this event. In order to accommodate everyone, we have rented the adjacent lot, to the Northwest of WRSC, to be used for trailer parking and for car overflow parking. For GPS purposes, this address seems to work:

1070 Benning Rd, Galesville, MD 20765

Directions from WRSC: take a right turn out of the club onto Riverside Drive, then a right turn onto Main Street (Route 255), and a right turn onto Benning Road. The lot is at the next intersection on the right side. See diagram below.

Visiting racers with trailers: Please drop off your boat at the club and move your trailer to the adjacent parking lot within 15 minutes.

Cars: At WRSC, please do not park in empty boat spaces or in any driveway aisles. If our WRSC parking is full, please move your car to the overflow lot.

