

# West River Sailing Club Spring Regatta

Galesville, MD

May 5 and 6, 2018

## **SAILING INSTRUCTIONS**

Rev. 4/30/2018

### **1 RULES**

- 1.1 The regatta will be governed by the current Racing Rules of Sailing, together with the rules of the participating classes and any additional sailing instructions to be issued at the competitors' meeting.

### **2 NOTICES TO COMPETITORS**

- 2.1 Notices to competitors will be posted on the official notice board located on the East window of the WRSC clubhouse.

### **3 SIGNALS MADE ASHORE**

- 3.1 Signals made ashore will be displayed from the flagpole located at WRSC. When flag AP is displayed ashore, '1 minute' is replaced with 'not less than 1 hour' in the race signal AP.

### **4 SCHEDULE**

#### 4.1 Saturday

0830 Late on-site registration opens in the clubhouse

0915 Late on-site registration closed

0930 Competitors' meeting (at flagpole or inside if raining)

#### First Warning Signal:

1100 A-Cat and Catamaran Open Classes

1200 (noon) International 505 Class

The Race Committee (RC) will announce the order of starts for the first race at the competitors' meeting.

#### 4.2 Sunday

1030 First warning signal for all classes

1430 No races will start after this time

Awards will follow racing.

4.3 Number of Races:

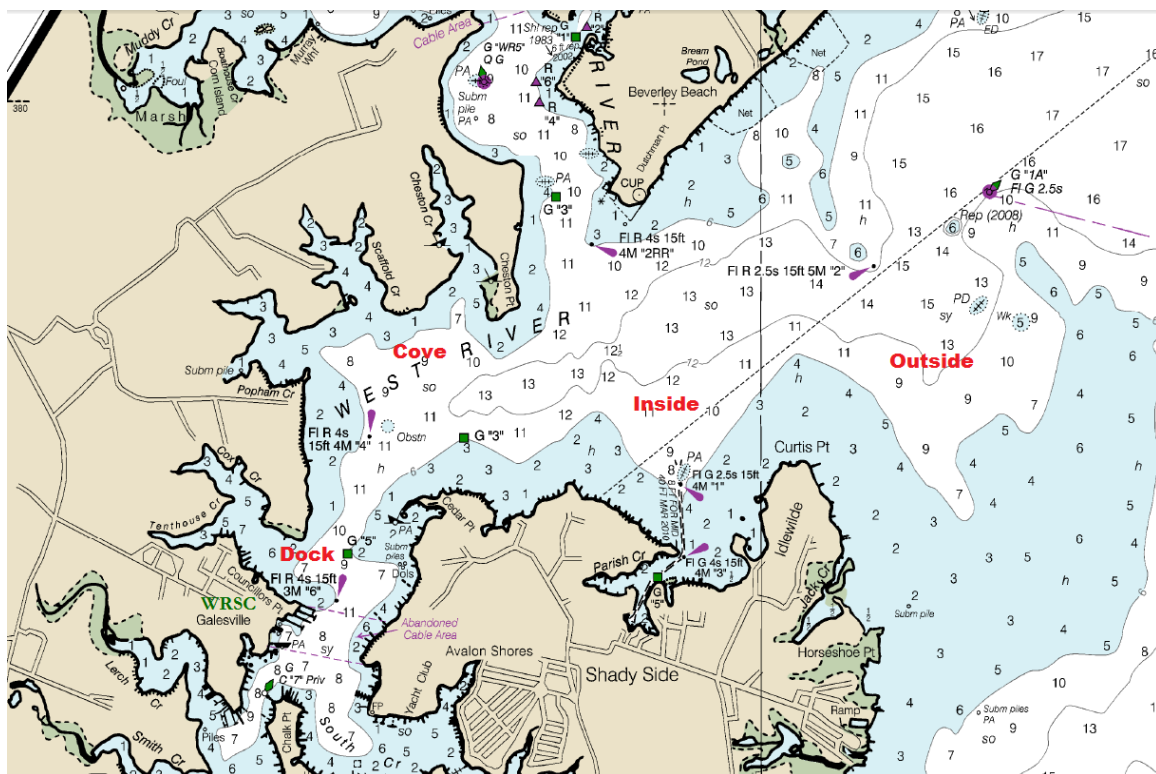
There is no limit to the number of races. The committee will attempt to maximize racing for the conditions available.

5 **CLASS FLAGS**

5.1 Class flags will be the respective insignia or as described at the competitor's meeting.

6 **RACING AREA**

6.1 The venue shall be finalized by the RC on race day. WRSC typically races on the West River or on the west side of the bay just outside of the river entrance.



7 **THE COURSES**

7.1 The course will be as shown in Appendix A.

8 **MARKS**

8.1 The marks will be as described in Appendix A.

9 **THE START**

9.1 Classes will use a fixed starting line unless during the competitors' meeting they choose to use a Gate (Rabbit) Start.

- 9.2 Fixed starting line: The starting line will be between a staff displaying a yellow flag on the RC signal boat and the course side of the port-end starting mark to be left to port.
- 9.3 Gate (Rabbit) start: The following procedure will be used:
- (a) The first Rabbit of the regatta will be chosen at random at the competitors' meeting.
  - (b) The Gate Boat will be trailing the Rabbit as closely as possible during the gate start.
  - (c) The Rabbit and Gate Boat will round the pin of the starting line when the sequence counts down to zero.
  - (d) The gate will be open for X seconds as posted on the RC Boat. The default of 60 seconds will be used. If no seconds are shown on RC, a 60 second gate will be established.
  - (e) After X seconds of (d), the Gate Boat will drop a mark signifying the gate is closed.
  - (f) Any boat that has not gated at this point will need to drop down to pass through the pin and the dropped mark.
  - (g) The gate closed mark shall be removed 1 minute after being dropped.
  - (h) The third-place boat in the next race will be the Rabbit in the upcoming race.
  - (i) The Rabbit's sail number will be posted on the RC boat.
- 9.4 Boats whose warning signal has not been made shall avoid the starting area during the starting sequence for other races.
- 9.5 Note that the order of starts may not be constant.

## **10 THE FINISH**

- 10.1 The finish line will be between a staff displaying a yellow flag on the RC signal boat and the course side of the port-end finishing mark to be left to port.

## **11 PENALTY SYSTEM AND PROTESTS**

- 11.1 For all classes, rule 44.1 is changed so that the Two-Turns Penalty is replaced by the One-Turn Penalty.

## **12 TIME LIMITS**

- 12.1 The time limit will be 90 minutes for the first boat to finish.
- 12.2 Boats failing to finish within 20 minutes after the first boat sails the course and finishes will be scored Did Not Finish without a hearing. This changes RRS 35, A4, and A5.

## **13 PROTESTS AND REQUESTS FOR REDRESS**

- 13.1 Protest Forms are available at the bar. Protests and requests for redress or reopening shall be delivered to the PRO within one hour after the RC returns to the dock.

**14 SCORING**

- 14.1 One (1) race is required to be completed to constitute a series.
  - (a) When fewer than 5 races have been completed, a boat's series score will be the total of her race scores.
  - (b) When from 5 to 11 races have been completed, a boat's series score will be the total of her race scores excluding her worst score.
  - (c) When 12 or more races have been completed, a boat's series score will be the total of her race scores excluding her two worst scores.

**15 SAFETY REGULATIONS**

- 15.1 Before starting their first race of the day, all competitors' boats shall sail astern the signal boat, give their sail number and be acknowledged by the race committee.
- 15.2 A boat that retires from a race shall notify the race committee as soon possible.

**16 SUPPORT BOATS**

- 16.1 Support boats shall be marked with the letters WRSC or as described at the competitors' meeting.

**17 RADIO COMMUNICATION**

- 17.1 Except in an emergency, a boat that is racing shall not make voice or data transmissions and shall not receive voice or data communications that is not available to all boats. This restriction also applies to mobile telephones but does not apply to communications to notify RC that a competitor is leaving the race area.

**18 PRIZES**

- 18.1 For each class, prizes will be given to the first-place finisher in classes with three or fewer entries, the first two finishers in classes with six or fewer entries, and the first three finishers in classes with seven or more entries. Prizes for the A-Cat class will be awarded for Foiling and Classic boats as separate classes.

**19 DISCLAIMER OF LIABILITY**

- 19.1 Competitors participate in the regatta entirely at their own risk. See RRS 4, Decision to Race. The organizing authority will not accept any liability for material damage or personal injury or death sustained in conjunction with or prior to, during, or after the regatta.

### APPENDIX A: COURSE DIAGRAM

The course will be around racing marks in windward-leeward layout, twice around. The course length will be set for a race duration of about 20-40 minutes

- (a) Windward mark shall be left to port;
- (b) Windward mark will have an offset mark;
- (c) Leeward gate will be to windward of start/finish area;
- (d) Finish line is on opposite side of RC signal boat from starting line;
- (e) Start, finish, and offset marks will be balls, or as described at the competitors' meeting.
- (f) Windward mark and leeward gate marks are cylinders, or as described at the competitors' meeting.

