



Waikiki Yacht Club
1599 Ala Moana Blvd
Honolulu, Hawaii, 96814
808.995.4405 | regatta@waikikiyachtclub.com

Sailing Instructions

D.J.JOHNSON AROUND OAHU REGATTA

May 26th, 27th, 28th, 2018

1. RULES:

1.1. The regatta will be governed by the rules as defined in the Racing Rules of Sailing (RRS), the prescriptions of US SAILING, pertinent Class/Fleet Rules, by the Waikiki Yacht Club Standing Sailing Instructions, the Notice of Race and these Sailing Instructions.

1.2. The RRS are changed as follows:

1.2.1. Rule 52 - The use of powered winches is authorized.

1.2.2. Rule 49 does not apply to Multihulls.

1.2.3.6.4 Redress: RRS 60, 63.2, 63.4, US Sailing Prescriptions to RRS 60 (Participation Committee composition) are deleted.

1.2.4. Rule 55 does not apply for spinnaker stopping materials only. It still applies to trash.

2. **NOTICES TO COMPETITORS:** Notices to competitors will be posted on the official notice board located in the WYC on the regatta board for the first day, on the KYC bulletin board for the second day and on the regatta board for the third day.

3. **CHANGES TO THE SAILING INSTRUCTIONS:** Any change to the sailing instructions will be posted before 0900 on the day it will take effect.

4. **SIGNALS MADE ASHORE:** Signals made ashore will be displayed from the WYC flagpole for day one, the KYC flagpole for day two and WYC flagpole for day three.

5. SCHEDULE OF RACING:

See appendix A for Saturday, May 26th, 2018

See appendix B for Sunday, May 27th, 2018

See appendix C for Monday, May 28th, 2018

6. PROTESTS AND REQUESTS FOR REDRESS

6.1 Protest forms are available at WYC. Protests and requests for redress or reopening shall be delivered there within the appropriate time limit.

6.2 Protests will be heard in approximately the order received as soon as possible.

6.3 Protests on incidents occurring on Day 2 will be heard immediately after the Day 3 race.

6.4 Protest notices will be posted within 30 minutes of the protest time limit to inform competitors where and when there is a hearing in which they are parties or are named as witnesses.

7. REQUIREMENTS FROM DNLR:

7.1 All boats shall follow all navigational rules at all times while in the ocean waters.

7.2 Each boat operator shall have passed the boater safety education class and have their boater safety education card on them during the use of the motorized vessels.

8. FURTHER INFORMATION;

Hideki Hayashi (808)391-7940 or hhayashi@myhokua.com

APPENDIX A

May 26, 2018

Day 1

Racing Area: The racing area will be off the leeward and windward shores of Oahu

The Course: The course will be Start – DH to port – Finish. Boats shall pass all island to seaward, except Moku Manu, which may be passed on either side. Approx. 30 NM.

Signals: Class Flags as described below will be displayed for each classes Warning Signal.

PH A & B	Black with #1
PH X	Pink with X
Multihulls	Blue with M

The Start: The start will be located approx. ¼ mile southeast of the Ala Wai Harbor Entrance. The Starting Line will be between two yellow inflatable buoys. A boat shall not start later than 5 minutes after her starting signal.

<u>Class</u>	<u>Warning</u>	<u>Start</u>
PH A & B	0955	1000
PH X	1005	1010
Multihulls	1015	1020

The Finish: The finish is at Kaneohe Bay Sampan channel entrance. The finish line is between the Sampan Channel entrance buoy R2 and the Race Committee Boat with orange flag. Boats may communicate on **VHF Channel 68** with KYC Race Committee to verify their finish times. Boats finishing when the Race Committee is not on station shall finish and report their finish times to the Race Committee, on VHF Channel 68 or by contacting KYC Brett Phillips at (808) 388-3456 within one hour of finishing.

Safety: Any boat that starts but returns to Waikiki rather than finishing at KYC should contact Race Committee by VHF Channel 68 or by phone at (808) 391-7940.

Entering into Kaneohe Bay and Mooring: Boats with a draft over 7 ft. should use the Main Ship Channel to enter Kaneohe Bay.

IMPORTANT NAVIGATION INFORMATION

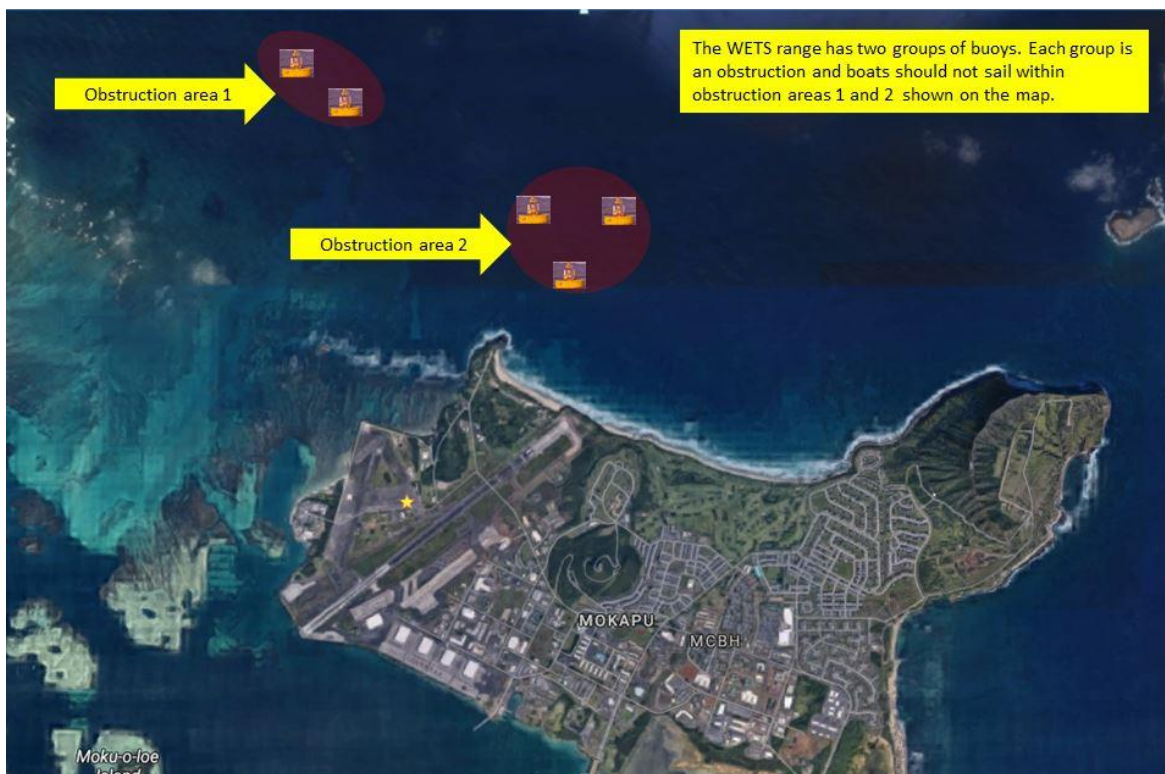
Information for WYC D J Johnson – 3 Day Arount Oahu Regatta

Obstructions:

The WETS range has two group of buoys. Each group is classified as an obstruction and boat must not sail within the obstruction areas 1 and 2 shown on the map.

The obstruction area for each group is defined as the area between the buoys of each group. This does not mean the area between the two groups.

This is a photo graph of the Mokapu Peninsula and the approximate location of the WETS range



APPENDIX B

May 27, 2018

Day 2

Racing Area: The racing area will be off the windward and leeward shores of Oahu.

The Course: The course will be Start – Mark X to port – Out the main channel honoring all marks except “K” – DH to starboard - Finish. Approx. 39 NM.

Marks: Mark X will be an inflatable buoy set approximately ½ mile windward of the start line.

Signals: Class Flags as described below will be displayed for each class’s Warning Signal.

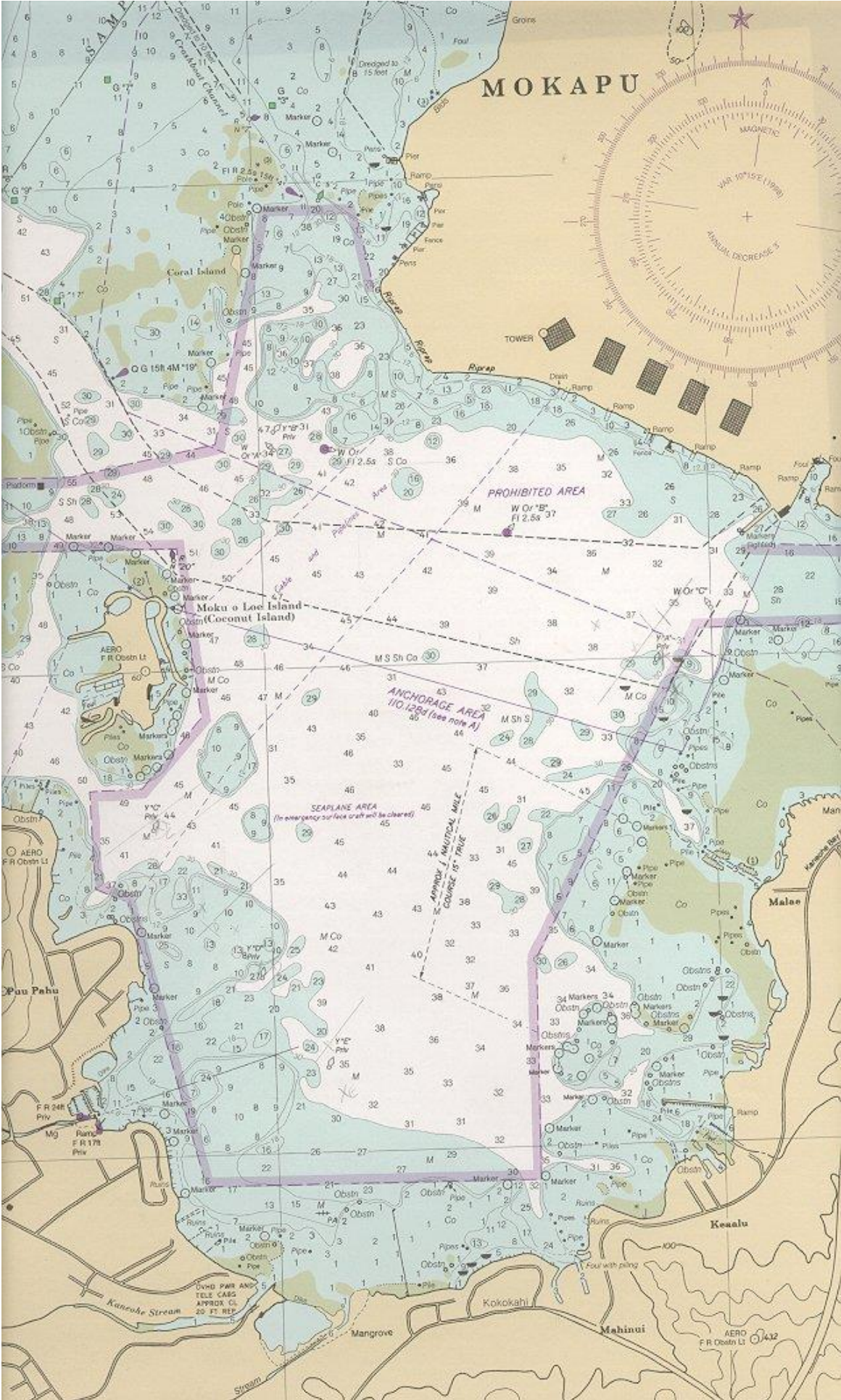
PH A & B	# 1 Pennant
PH X	# 2 Pennant
Multihulls	# 3 Pennant

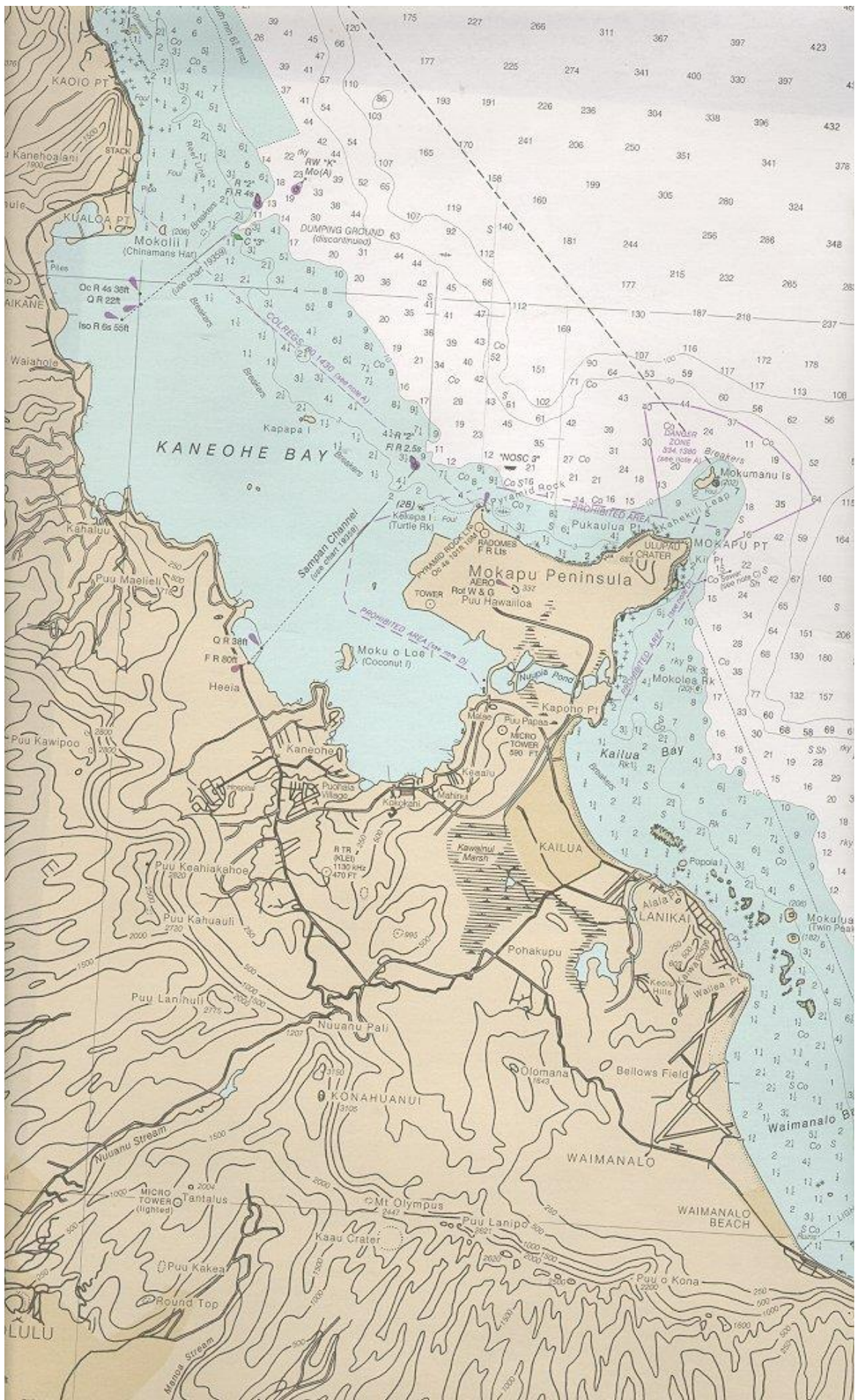
The Start: The Start will be between KYC and Coconut Island. The Start Line will be between a starting pin and a rectangular white flag with the letters L I N E (alternatively an orange flag) on the Race Committee signal boat.

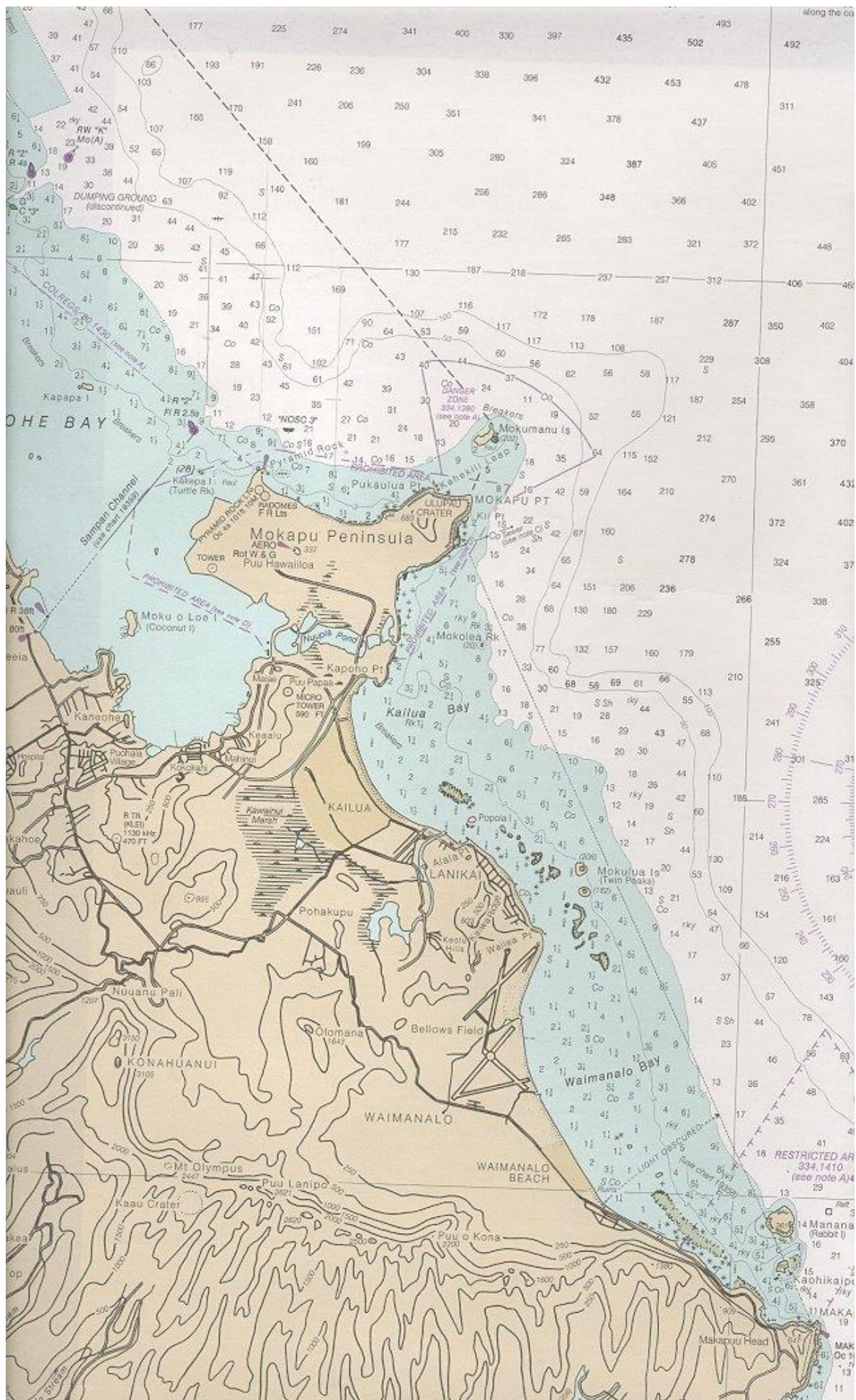
<u>Class</u>	<u>Warning</u>	<u>Start</u>
PH A & B	0955	1000
PH X	1005	1010
Multihulls	1025	1030

The Finish: The finish line will be between G1 and the staff of an orange flag on the Race Committee Boat. Boats finishing after 1600 shall report their finish times to WYC Race Committee on VHF Channel 68 or (808) 391-7940 as soon as possible.

Followings are the map of Kaneohe bay for your information.







APPENDIX C

May 28, 2018

Day 3

Racing Area: The racing area will be at leeward shores of Oahu.

The Course:

The course will be Start – DH to port – HH to starboard – Pearl Harbor buoys 1 & 2 to starboard - Orange mark off Barbers Point to port – Pearl Harbor buoys 1 & 2 to port – HH to port – Finish. Approx 35 NM.

Orange mark off Barbers Point will be located approx. 180 degree from and about 2 – 3 miles off Barbers Point, subject to change due to weather conditions.

Areas That Are Obstructions: Note the Prohibited area as indicated on attachment 2.

Signals: Class Flags as described below will be displayed for each class's warning signal.

PH C	Yellow with #1
PH A & B	Black with #1
PH X	Pink with X
Multihulls	Blue with M

The Start: The start will be located approx. ¼ mile southeast of the Ala Wai Harbor Entrance. The Starting Line will be between two yellow inflatable buoys. A boat shall not start later than 5 minutes after her starting signal.

<u>Class</u>	<u>Warning</u>	<u>Start</u>
PH A & B	0935	0940
PH X	0955	1000
Multihulls	1005	1010

The finish: The finish line will be between G1 and the staff of an orange flag on the Race Committee Boat. Boats finishing after 1600 shall report their finish times to WYC Race Committee on VHF Channel 68 or (808) 391-7940 as soon as possible.

Prizes: Prizes will be awarded at approximately 1600 at WYC.

Attachment 2

