



**USA Junior Olympic Sailing Festival
BEVERLY YACHT CLUB
FIFTY-FOURTH ANNUAL
INVITATIONAL
JUNIOR REGATTA**



99 Water Street, P. O. Box 181, Marion, MA 02738
Junior Clubhouse Phone (508) 748-1737
Main Office Phone (508) 748-0540
National JO Sponsors: Gill, Sperry Top-Sider & New England Ropes

August 14 - 15 2018 (Tuesday-Wednesday)

BYC Jr. Program Director: Alison Mitchell
BYC Jr. Program Chair: Kellie Crete

SAILING INSTRUCTIONS FOR 420/LASER, OPTIMIST & O'PEN
BIC

1. Rules

The regatta will be governed by the rules as defined in *The Racing Rules of Sailing* (RRS) 2017-2020. The US SAILING prescriptions to RRS 60, 63.2 and 63.4 are deleted.

2. Notices to Competitors

Notices to Competitors will be posted on the official notice board located on the outside deck of the Beverly Yacht Club and at Silvershell Beach.

3. Changes to Sailing Instructions

Any change to the sailing instructions will be posted on the day it will take effect: before 0930 on Tuesday or 0830 on Wednesday.

4. Signals Made Ashore

- 4.1 Signals made ashore will be displayed from Silvershell Beach.
- 4.2 When flag AP is displayed ashore, boats shall not leave the launching site until the AP is lowered. The next warning signal will be made not less than 60 minutes after the AP is lowered. This changes Race Signals "AP".

5. Schedule

- 5.1 There will be a competitors' meeting at Silvershell Beach at 0845 on Tuesday.
- 5.2 Racing is scheduled for Tuesday and Wednesday.

- 5.3 The race committee intends to run as many races as time permits.
- 5.4 The first warning signal is scheduled for 1100 on Tuesday and 1000 on Wednesday.
- 5.5 On Wednesday, no first warning signal will be made after 1500. For classes with two starts per race, this time limit applies only to the first start.

6. Class Flags

- 6.1 The class flag for the 420 class will be the 420 insignia on a white background.
- 6.2 The class flag for the Laser will be the Laser insignia on a white background.
- 6.3 The class flag for the Opti Championship will be the Opti insignia on a white background.
- 6.4 The class flag for the Opti Green will be a solid green flag.
- 6.5 The class flag for the O'Pen Bic will be a solid blue flag.

7. Racing Areas

- 7.1 Attachment A shows the approximate location of the racing areas.

8. Courses

- 8.1 The Race Committee will display the course designation and the bearing to the windward mark before every race.
- 8.2 The diagrams in [Attachment B \(Opti Green Fleet\)](#), [Attachment B1\(Opti Trapezoid\)](#), [Attachment B2 \(420 and Opti Championship\)](#), [Attachment B3 \(420 and Laser\)](#) show the courses, including the approximate angles between legs, the order in which marks are to be passed, and the side on which each mark is to be left, except that a gate, when used, shall be rounded as described in rule 28.1(c).

9. Marks

- 9.1 Marks are described in Attachment C, which may differ from the diagrams.

10. The Start

- 10.1 The starting line will be between the staff from which an orange flag is displayed on the race committee boat at the starboard end and the course side of the port-end starting mark or a staff displaying an orange flag from a race committee boat.
- 10.2 The race committee may set a small spherical buoy as a mid-line guide, near the middle of the starting line. This is neither a starting mark nor a mark of the course. For purposes of RRS 30.1, a mid-line guide buoy is NOT an end of the starting line.
- 10.3 The 420, Laser and Optimist Championship Lines will be started using RRS 26. The Optimist Green Line and O'pen Bic will be started using RRS Appendix U Audible- Signal Racing System (the three-minute start system).
- 10.4 Boats whose warning signal has not been made shall stay in the Waiting Area (see the diagrams) while another fleet is in a starting sequence.
- 10.5 A boat starting later than 4 minutes after her starting signal will be scored Did Not Start without a hearing. This changes RRS 63.1, A4.1 and A5.

11. Recalls

- 11.1 The race committee will attempt to hail the sail numbers of boats that are OCS or subject to RRS 30.1.
- 11.2 The failure of the race committee to hail, the timeliness of the hails or the order of hailing shall not be grounds for granting redress. This changes RRS 62.1(a).

12. Changes to the Course

To change the next leg of the course, the Race Committee will lay a new mark or move the finish line, and remove the original mark as soon as practicable. When a change is made to the windward mark, the offset mark may not be set.

13. The Finish

The finishing line will be between the staff from which an orange flag is displayed on a race committee boat at one end, and the course side of the finishing mark.

14. Time Limits

14.1 The time limit is 75 minutes for the first boat in a fleet to finish.

14.2 If no boat reaches the first mark within 30 minutes, the race shall be abandoned.

14.3 Boats still racing 30 minutes after the first boat that sails the course finishes will be scored Did Not Finish without a hearing. This changes RRS 35, 63.1, A4.1 and A5.

15. Protests and Requests for Redress

15.1 **For Optimists only**, delete RRS 61.1(a)(2). This means that a red protest flag is required.

15.2 A boat intending to protest shall report her intention to the race committee finish boat at the first reasonable opportunity after finishing, including the sail number of the boat she intends to protest.

15.3 Protest forms are available at the protest desk on the BYC porch. Protests shall be delivered there within the protest time limit.

15.4 For each class, the protest time limit is 40 minutes after it's finish boat docks.

15.5 Notices will be posted at the protest desk within 15 minutes of the protest time limit to inform competitors of hearings in which they are parties or named as witnesses.

15.6 Notices of protests by the race committee or protest committee will be posted to inform boats as required by RRS 61.1(b).

15.7 Breaches of instructions 4.2, 17 and 18 will not be grounds for protests by boats. This changes RRS 60.1(a). Penalties for these breaches may be less than disqualification.

15.8 On Wednesday, the time limit for requesting redress or reopening a hearing is the protest time limit, or 15 minutes after being informed of the decision, whichever is later. This changes RRS 62.2 and 66.

15.9 Observers may be permitted at protest hearings.

16. Scoring

16.1 The Low Point Scoring System of Appendix A will apply, as changed below.

16.2 One race is required to be completed to constitute a series.

16.3 When fewer than five races have been completed, a boat's series score will be the total of her race scores. A boat's worst score will be excluded only if 5 or more races are completed.

16.4 Optimists will be scored in their overall fleet position. A boat's sub-fleet (red, blue or white) series place will be determined by her relative place in the overall fleet.

17. Safety

17.1 A boat that retires from a race shall notify the race committee as soon as possible.

17.2 Any boat intending to leave the racing area prior to her finishing the last race of the day shall communicate her intention to the Race Committee prior to leaving the racing area.

17.3 All competitors shall wear a non-inflatable, USCG-approved PFD with a whistle attached at

- all times while on the water, except for brief periods while changing clothing.
- 17.4 If the race committee displays flag L before the Warning signal to indicate that a check-in is required, boats shall, before their Preparatory signal, sail past the stern of the race committee signal boat in single file on starboard tack until their sail number is acknowledged by the race committee.
- 17.5 Boats that fail to comply with SI 17.4 shall receive a 10% scoring penalty [see RRS 44.3(c)] without a hearing. This changes RRS 63.1, A4.1 and A5.
- 17.6 Any boat that touches or docks on the pier to the east of the launching site, with the exception in an emergency, or tries to haul or launch outside of the designated area, marked by orange buoys, will be automatically disqualified for that day of racing without a hearing. The pier will be marked with signs, prohibiting sailors from using the dock space.
- 17.7 For VHF radio communication, the Club 420/Laser line will use VHF channel 73, the Optimist Championship line will use VHF channel 63 the Opti Green/ O'Pen Bic line will use VHF channel 74. The Harbor Master may be reached on VHF channel 16.

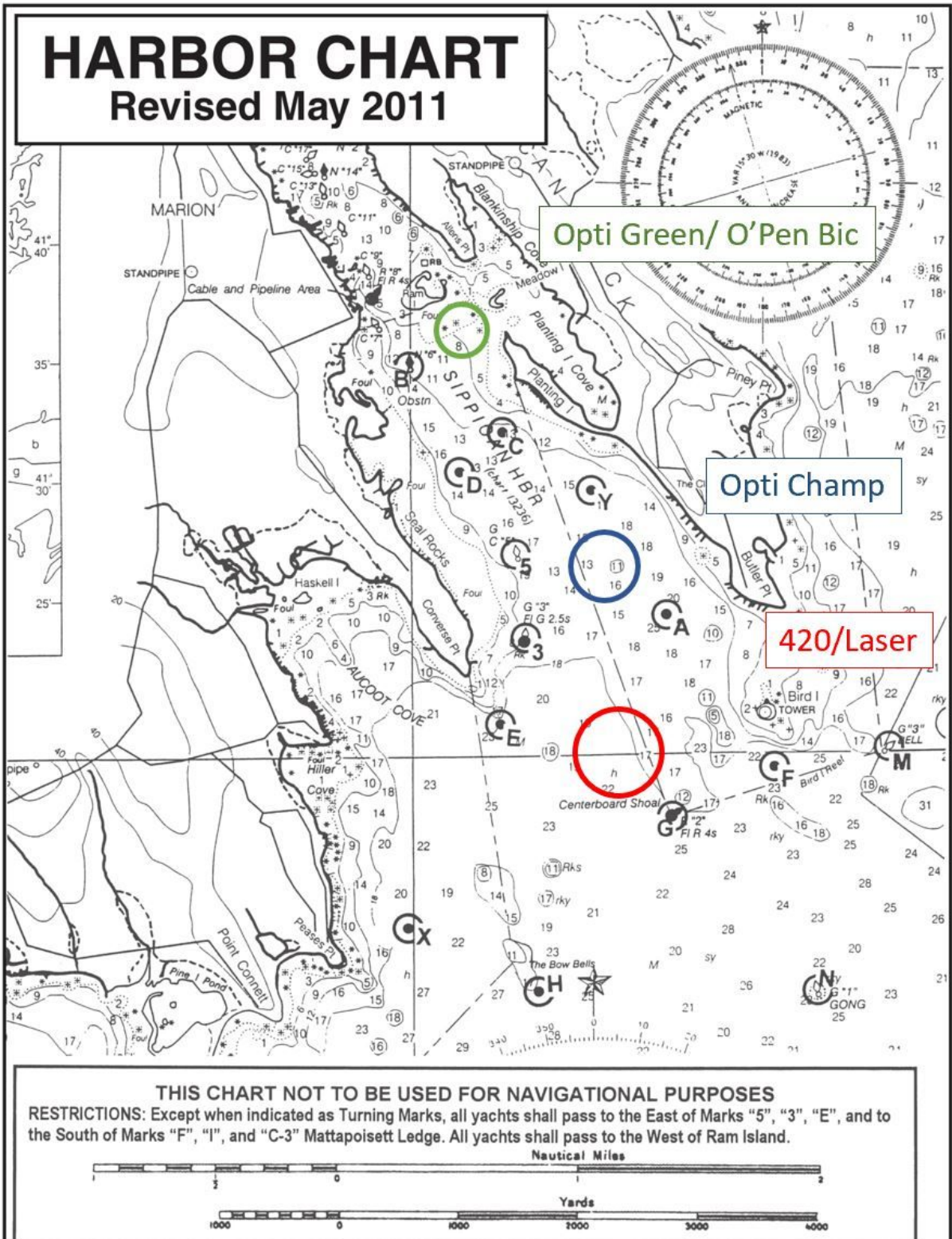
18. Sail Numbers

Changes in sail numbers will not be allowed without the written approval of the race committee.

19. Disclaimer of Liability

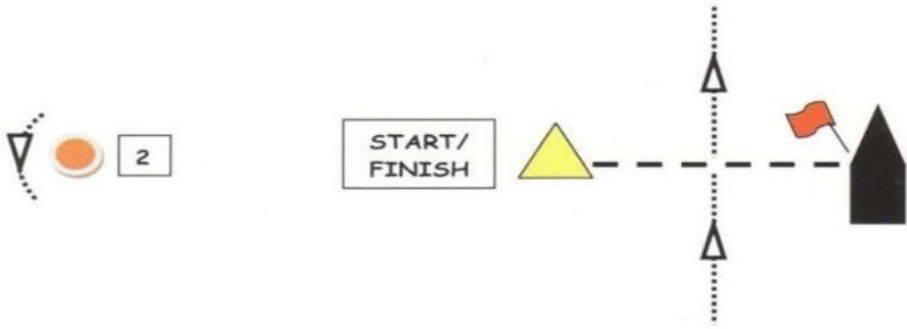
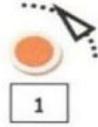
Competitors participate in the regatta entirely at their own risk. See RRS 4, Decision to Race. The organizing authority will not accept any liability for material damage or personal injury or death sustained in conjunction with or prior to, during, or after the regatta.

ATTACHMENT A- Harbor Chart

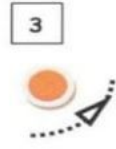


ATTACHMENT B- COURSE DIAGRAM: Opti Green and O'Pen Bic

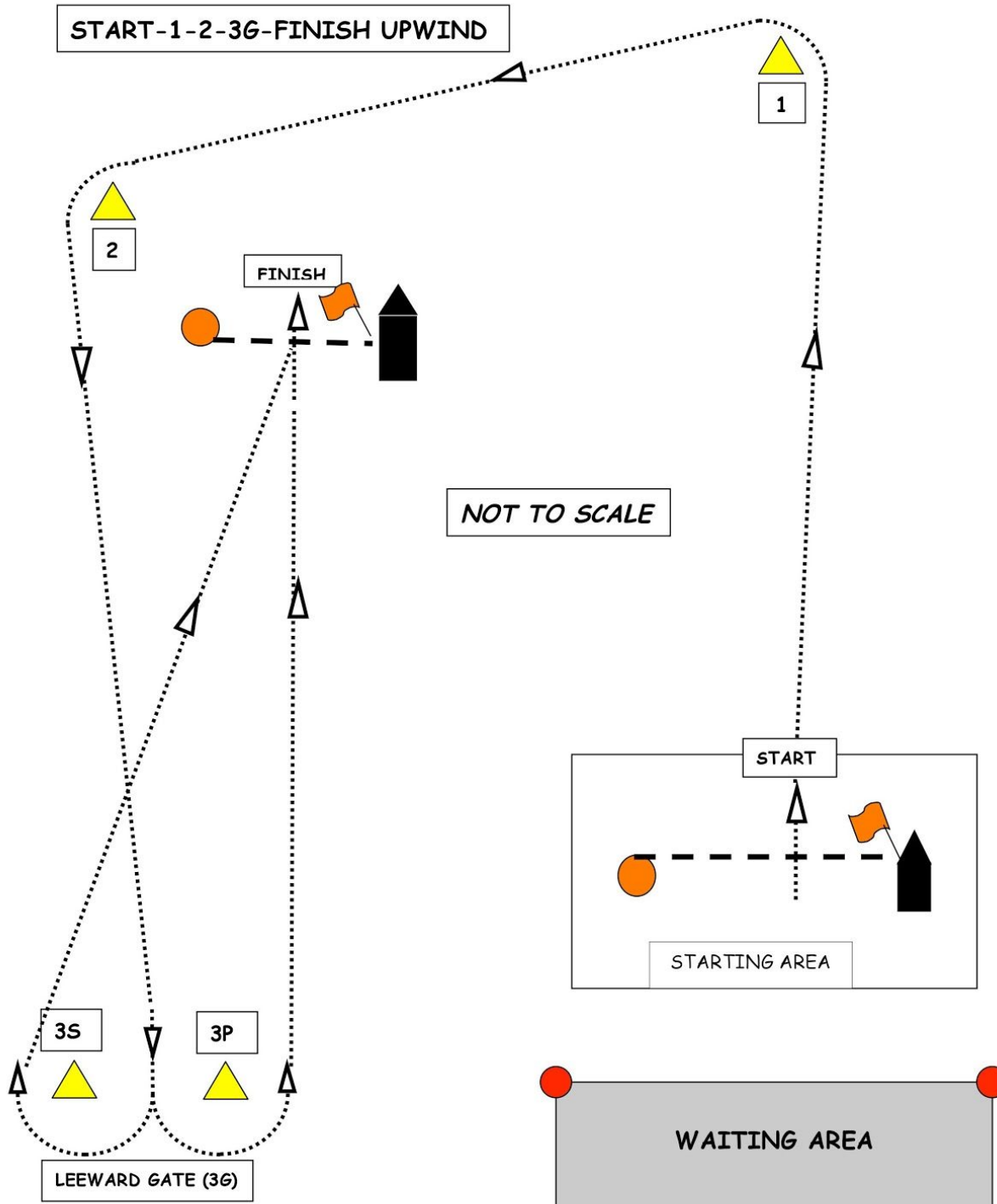
4: START-1-2-3-FINISH
6: START-1-2-3-1-3-FINISH



NOT TO SCALE

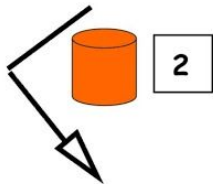
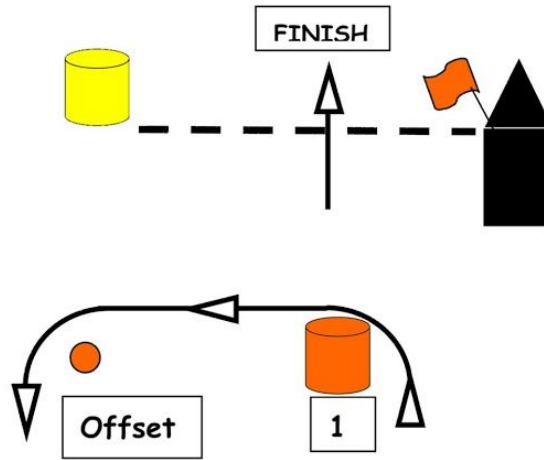


ATTACHMENT B1 - COURSE DIAGRAM: Opti Trapezoid

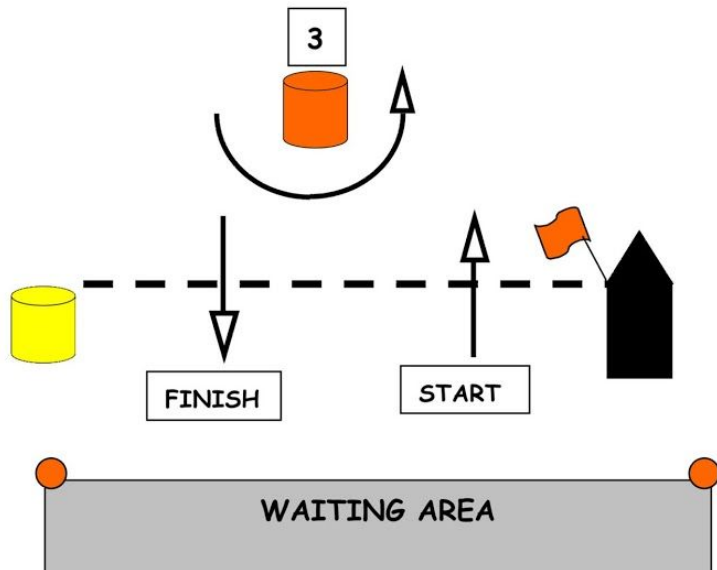
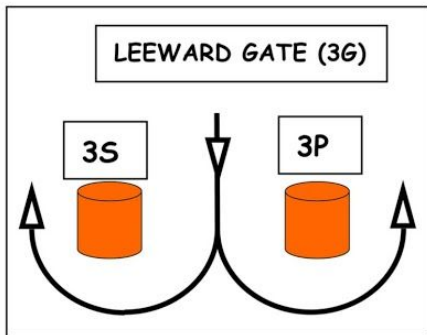


ATTACHMENT B2 - COURSE DIAGRAM: 420s, all Lasers
& Opti Championship

W2: START-1-Offset-FINISH
 DOWNWIND
 W3: START-1-Offset-3G-FINISH
 UPWIND
 W4: START-1-Offset-3G-1-Offset-
 FINISH DOWNWIND
 W5: START-1-Offset-3G-1-Offset-
 3G-FINISH UPWIND
 etc.
 T: START-1-2-3-FINISH UPWIND



NOT TO SCALE

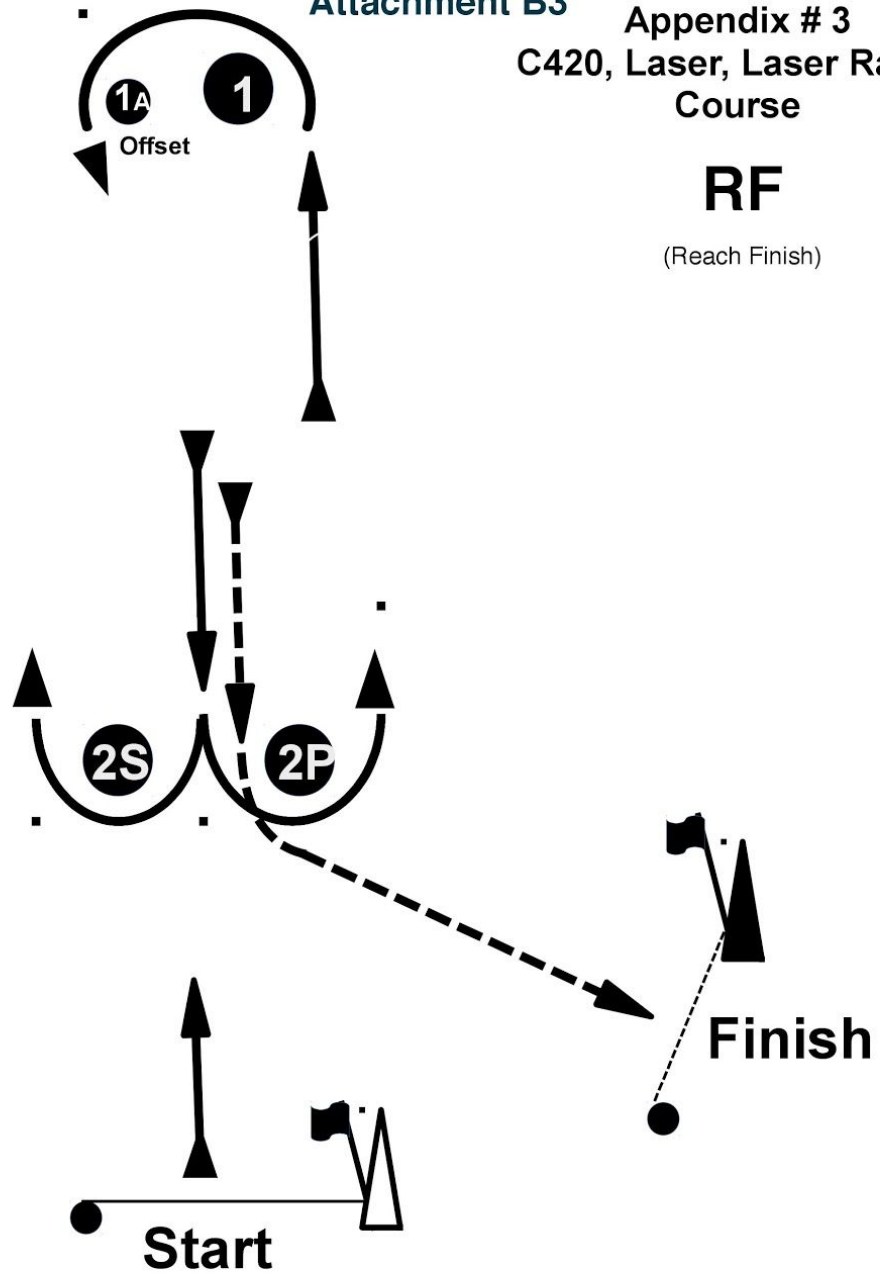


Attachment B3

Appendix # 3
C420, Laser, Laser Radial
Course

RF

(Reach Finish)



Start ▶ 1 ▶ 1A Offset ▶ Gate 2S/2P ▶ 1 ▶ 1A Offset ▶ 2P ▶ Finish

Attachment C

Mark assignment:

	Start	Offset	Round	Finish	Change
420/Laser	Pin Boat	Orange tomato	Orange cylinder	Yellow cylinder	Yellow Tetrahedron
Opti Champ	Pin Boat	Small orange tomato or yellow tetrahedron	Yellow tetrahedron	Large orange tomato	Orange tetrahedron
Opti Green/ O'pen Bic	Orange tetrahedron	Orange tetrahedron	Unicorn, Dinosaur, Whale, stingray	Orange tetrahedron	Yellow Tetrahedron