



Sailing Instructions

# 2018 Sail East at Sail Fest

Sail NS U19 Sailing Championship

July 28-29, 2018

Lunenburg Yacht Club  
734 Herman's Island Rd, Lunenburg, NS B0J 2C0  
(902) 634-3745  
<http://www.lyc.ca>

Sponsored by



Organizing Authority: Lunenburg Yacht Club



# Sailing Instructions

The notation '[DP]' in a rule in the SI means that the penalty for a breach of that rule may, at the discretion of the protest committee, be less than disqualification.

## 1 Rules

- 1.1 The regatta will be governed by the rules as defined in *The Racing Rules of Sailing* (RRS).
- 1.2 Sail Canada prescriptions to the RRS are available at [http://www.sailing.ca/files/RRS\\_2017\\_2020\\_Sail\\_Canada\\_Prescription\\_Final\\_EN.pdf](http://www.sailing.ca/files/RRS_2017_2020_Sail_Canada_Prescription_Final_EN.pdf)
- 1.3 Racing Rules will be changed as follows:
  - 1.3.1 RRS 40 is changed to apply at all times while afloat without the display of code flag Y. This modifies the preamble to Part 4.
  - 1.3.2 RRS 63.7 will be changed such that if there is a conflict between the Notice of Race and the Sailing Instructions, the Sailing Instructions will take precedence.

## 2 Notices to Competitors

Notices to competitors will be posted on the official notice board inside the door of the LYC Clubhouse.

## 3 Changes to Sailing Instructions

Any change to the sailing instructions will be posted before 0900 on the day it will take effect or 30 minutes prior to the removal of code flag AP when flown ashore (whichever is later), except that any change to the schedule of races will be posted by 2000 on the day before it will take effect.

## 4 Signals Made Ashore

- 4.1 Signals made ashore will be displayed on the flagstaff on the deck of the LYC Clubhouse.
- 4.2 Signals made ashore over a course flag only apply to that course.
- 4.3 When code flag AP is displayed ashore, '1 minute' is replaced with 'not less than 45 minutes' in race signal AP.

## 5 Schedule of Races

|                  |                              |  |
|------------------|------------------------------|--|
| Saturday July 28 | 0900<br>0930<br>1100<br>1700 | Coaches' Meeting<br>Competitors' Meeting<br>First warning signal, all classes<br>Regatta Dinner after racing, followed by all ages entertainment |
| Sunday July 29   | 0900<br>1100<br>1500<br>1630 | Coaches' Meeting<br>First warning signal, all classes<br>Latest warning time, all classes<br>Approximate awards time                             |

## 6 Class Flags

| Class                       | Racing Area | Class Flag                       |
|-----------------------------|-------------|----------------------------------|
| Laser                       | Alpha       | White flag with red laser symbol |
| Laser Radial                | Alpha       | Red flag with white laser symbol |
| Laser 4.7                   | Alpha       | Pink Flag                        |
| International 420           | Bravo       | Purple Flag                      |
| Club 420 Championship Fleet | Bravo       | White flag with blue 420 symbol  |
| Club 420 Sail Fest Fleet    | Bravo       | Green flag with 420 symbol       |

|          |         |                                       |
|----------|---------|---------------------------------------|
| 29er     | Bravo   | White flag with blue 29er symbol      |
| Optimist | Charlie | White flag with black optimist symbol |

## 7 Racing Areas

There will be three racing areas designated as Alpha, Bravo and Charlie. Locations will be chosen daily from among the course location options identified in Addendum A, and will be presented to coaches at their daily morning meeting. Classes will be allocated to racing areas in accordance with Instruction 6.

## 8 The Courses

8.1 The diagram in Addendum B shows the course, the order in which marks are to be passed, and the side on which each mark is to be left.

8.2 If one of the gate marks is missing, the remaining mark in position should be rounded to port.

## 9 Marks

9.1 Marks, and new marks as described in instruction 11.1 will be as follows:

| Course                               | Marks                          | New Marks                      |
|--------------------------------------|--------------------------------|--------------------------------|
| Alpha (Laser, Radial, 4.7)           | Red inflatable tetrahedrons    | Yellow inflatable tetrahedrons |
| Bravo (Both C420 fleets, I420, 29er) | Yellow inflatable tetrahedrons | Red inflatable tetrahedrons    |
| Charlie (Opti)                       | Red inflatable tetrahedrons    | Yellow inflatable tetrahedrons |

9.2 The starting and finishing marks will be the race committee signal boat at the starboard end displaying an orange flag, and either a narrow yellow inflatable pin or a race committee boat displaying an orange flag at the port end.

9.3 A race committee vessel signalling a change of a leg of the course is a mark as provided in SI 11.2.

## 10 The Start

10.1 The starting line will be between the staff displaying the orange flag on the Race Committee signal boat at the starboard end and either the staff displaying the orange flag on the Race Committee boat or the course side of an inflatable mark at the port end.

10.2 A boat starting later than 4 minutes after her starting signal will be scored Did Not Start without a hearing. This changes RRS 63.1, A4 and A5.

## 11 Change of the Next Leg of the Course

11.1 To change the next leg of the course the race committee will lay a new mark (or move the finishing line) and remove the original mark as soon as practicable. When in a subsequent change a new mark is replaced, it will be replaced by an original mark. Any mark to be rounded after the new mark may be moved to maintain the course configuration without signalling.

11.2 Except at a gate, boats shall pass between the race committee boat signalling the change of the next leg and the nearby mark, leaving the mark to port and the race committee boat to starboard. This changes rule 28.

## 12 The Finish

12.1 The finishing line will be between the staff displaying the orange flag on the race committee signal boat at the starboard end and either the staff displaying the orange flag on the race committee boat or the course side of an inflatable mark at the port end.

## 13 Penalty System

13.1 For the 29er class Rules 44.1 and P2.1 are changed so that the two-turn penalty is replaced by the one-turn penalty.

13.2 Appendix P is in effect except that Rule P2.3 is deleted and rule P2.2 is changed so that it will apply to any penalty after the first.

#### **14 Time Limits and Target Times**

14.1 Time limits and target times are as follows:

| <b>Class</b> | <b>First Mark Time Limit</b> | <b>Target Time</b> |
|--------------|------------------------------|--------------------|
| All Classes  | 25 minutes                   | 35 - 40 minutes    |

14.2 If no boat has passed the first mark within the first mark time limit the race will be abandoned.

14.3 Failure to meet the target time will not be grounds for redress. This changes Rule 62.1(a).

14.4 Any boat finishing more than 20 minutes after the first boat shall be scored Did Not Finish without a hearing. This changes RRS 35, A4 and A5.

14.5 When it is in the best interest of the fleet and its competitors, the Race Committee may award a finish to boats that are delaying the finish of the race (on course finish). This changes rules 28.1, 35, A4 and A11.

#### **15 Protests and Requests for Redress**

15.1 Protest forms are available at the protest desk, located upstairs in the LYC Learn to Sail Building. Protests and requests for redress or reopening shall be filed with the protest committee secretary at the protest desk within the appropriate time limit.

15.2 For each class, the protest time limit is 45 minutes after their respective race committee signal boat reaches the dock following the last race of the day.

15.3 Protest notices will be posted on the official notice board within 30 minutes of the end of protest time to inform competitors where and when there is a hearing to which they are parties to a protest or named as witnesses. Protests will be heard as quickly as possible and in the approximate order of receipt.

15.4 Notices of protests by the race committee or protest committee will be posted to inform boats under Rule 61.1(b).

15.5 A list of boats that have been penalized for breaking Rule 42 will be posted.

15.6 On the last scheduled day of racing a request for redress based on a protest committee decision shall be delivered no later than 30 minutes after the decision was posted. This changes Rule 62.2.

#### **16 Scoring**

16.1 One race is required to be completed to constitute a series.

16.2 When fewer than 5 races have been completed, a boat's series score will be the total of her race scores. When 5 or more races have been completed, a boat's series score will be the total of her race scores excluding her worst score.

#### **17 Safety Regulations**

17.1 All boats shall check in with their race committee signal boat upon arriving at the course by sailing past the stern of the boat on starboard tack and hailing their sail number.

17.2 A boat that retires from a race shall notify the race committee as soon as possible. [DP]

#### **18 Official Boats**

18.1 Race committee signal boats will be identified by a race committee flag.

18.2 Race committee mark and safety boats will not carry specific identification.

18.3 Jury boats will display a white flag with a letter J.

18.4 Failure of a race committee boat to fly an identification flag is not grounds for redress. This changes Rule 60.1(b).

## **19 Support Boats**

- 19.1 Support boats shall stay outside the racing area from the warning signal of the first fleet to start until all boats have finished or all races have been postponed or abandoned. The racing area is defined as 50 metres to leeward of the start line and 100 meters outside all lay lines.
- 19.2 Failure of a support boat to abide by Instruction 19.1 may result in action by the protest committee under rule 64.4.
- 19.3 Support boats are requested to monitor the race committee working channel. The race committee, in support of safety operations, may lift the restrictions of 19.1. It is recognized that support boats are essential to the safety plan of the regatta and they are required to assist in providing safety cover to competitors on the water. The Race Committee working channels will be:

| <b>Course</b> | <b>Channel</b> |
|---------------|----------------|
| Alpha         | 71             |
| Bravo         | 72             |
| Charlie       | 69             |

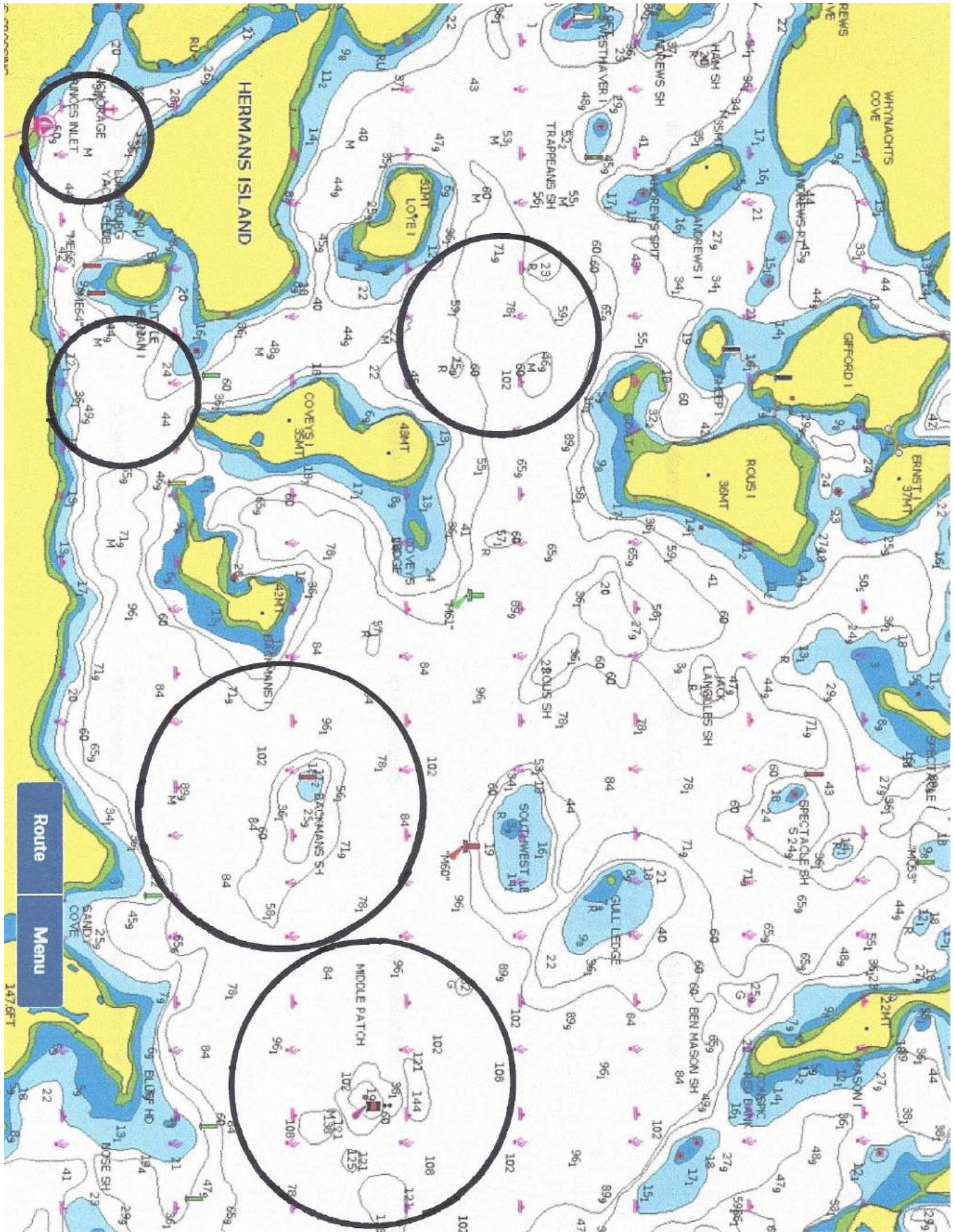
## **20 Right to use Name and Likeness**

In participating in an event, a competitor automatically grants to the Organizing Authority and the sponsors of the event, the right in perpetuity, to make, use and show, from time to time and at their discretion, any motion pictures, still pictures and live, taped or filmed television and other reproductions of him/her during the period of the competition in these events event in which the competitor participates and in all material related to the events without compensation.

## **21 Disclaimer of Liability**

- 21.1 Competitors participate in the regatta entirely at their own risk. See Rule 4, Decision to Race.
- 21.2 The Lunenburg Yacht Club and all other individuals and entities involved in the organization of this regatta shall accept no liability whatsoever for any injury, damage or loss or claim, whether personal or material, incurred or inflicted to participants before, during or after this regatta.

**Addendum A – Course Location Options – Not for Navigation**



Addendum B – The Course

Mark rounding order: Start – 1 – 2S/2P – 1 – Finish

