



2019 RS Aero Midwinter Regatta
February 9-10, 2019
Palm Beach Sailing Club and the Sailfish Club of Florida
West Palm Beach, Florida

SAILING INSTRUCTIONS

1. RULES

- 1.1. The regatta will be governed by the rules as defined in The Racing Rules of Sailing and the International RS Aero Class Rules.
- 1.2. The US Sailing prescriptions to rules 60.2, 63.2 and 63.4 are deleted.
- 1.3. Racing rule 40 is changed as follows: Competitors shall wear personal flotation devices, except briefly, while changing or adjusting personal equipment. Code flag Y will not be displayed.
- 1.4. These Sailing Instructions may be changed orally on the water; the Signal Boat will fly Code Flag L with multiple sound signals in the event of a change in the Sailing Instructions.
- 1.5 5.1. Class flags will be Aero 5, blue; Aero 7, yellow; Aero 9, pink.
- 1.6 Rule 44.1 is changed to provide for a one-turn penalty except within the zone.
- 1.7 [NP] before a paragraph of these Sailing Instructions denotes that a breach of this rule will not be grounds for protest by a boat. This changes RRS 60.1(a).
- 1.8 All boats shall carry a 30 foot length of line, ideally floating, for towing purposes.

2. NOTICES TO COMPETITORS

- 2.1. Notices to competitors will be posted on the notice board at the Palm Beach Sailing Club

3. CHANGES TO SAILING INSTRUCTIONS

- 3.1. Any change to the sailing instructions will be posted by 0900 on the day it will take effect, except that any change to the schedule of races will be posted by 2000 on the day before it will take effect.

4. SIGNALS MADE ASHORE

- 4.1. Signals made ashore will be displayed at the flagpole in front of the Palm Beach Sailing Club.4.2. When flag AP is displayed ashore, '1 minute' is replaced with 'not less than 30 minutes' in the race signal AP.

5. SCHEDULE OF RACES

Saturday, February 9

8:30-10:00 am: Check-in at RC office
10:00: Competitors Meeting
Noon: First Race Warning
6 pm: Regatta Dinner

Sunday, February 10

11am: First Race Warning

ASAP after racing: Awards presentation.

- 5.1. On the last day of the regatta no initial warning signal will be made after 1500.
- 5.2. Code flag A displayed, with no sound, while boats are finishing means 'No more racing today.'

6. RACING AREA

- 6.1. The racing area will be the Atlantic Ocean or Lake Worth.

7. COURSES

- 7.1. The diagrams in Attachment A show the courses, including the approximate angles between legs, the order in which marks are to be passed, and the side on which each mark is to be left.
- 7.2. The course shall be signaled by a placard on the signal boat at the warning signal.
- 7.3. [NP] Unless finishing, boats shall not pass through the finish line.

8. MARKS

- 8.1. The port end starting mark will be an inflatable mark or an orange flag on a mark boat. The starboard end starting mark will be an orange flag on the signal boat.
- 8.2. The color and shape of all course marks will be confirmed at the Competitor's Meeting and also posted on the official notice board.
- 8.3. The finishing mark will be the signal boat at the port end and an orange flag on a mark boat or inflatable mark at the starboard end.

9. THE START

- 9.1. The starting line will be between a staff displaying an orange flag on the signal boat at the starboard end and the course side of the port end starting mark.
- 9.2. The start will follow RRS #26.

10. CHANGE OF THE NEXT LEG OF THE COURSE

- 10.1. To change the next leg of the course, the race committee will move the original mark (or the finish line) to a new position.

11. THE FINISH

- 11.1. The finishing line will be between a staff displaying an orange flag on the signal boat at the port end and the course side of the starboard end finishing mark.
- 11.2. Boats failing to finish within 20 minutes after the first boat sails the course and finishes will be scored according to their observed position on the course, which may be the position of the last mark rounded. This changes RRS 35, A4, and A5.

12. TIME LIMITS & TARGET TIMES

- 12.1. Target time will be 30 minutes. Failure to meet the target time will not constitute grounds for redress.
- 12.2. Time limit will be 75 minutes.
- 12.3. A boat starting later than 5 minutes after her starting signal will be scored Did Not Start (DNS) without a hearing. This changes RRS A4 and A5.

13. PROTESTS & REQUESTS FOR REDRESS

- 13.1. Protest forms are available at the Palm Beach Sailing Club Race Office. Protests and requests for redress must be filed within 1 hour after the signal boat docks at PBSC.
- 13.2. The time and place of protest hearings will be posted on the notice board within 30 minutes of the protest filing deadline. It is the responsibility of each participant to check the posted list of protest hearings.

14. SCORING

- 14.1. The number of races scheduled is 8. The minimum number of races required to constitute a regatta is 3.
- 14.2. When fewer than 5 races have been completed; a boat's series score will be the total of her race scores. When 5 or more races have been completed, a boat's series score will be the total of her race scores excluding her worst score.

15. SAFETY REGULATIONS

- 15.1. [NP] While sailing in the Lake Worth Inlet, a boat shall sail alongside the south jetty.
- 15.2. A boat that retires from a race shall notify the race committee as soon as possible.

16. EQUIPMENT AND MEASUREMENT CHECKS

- 16.1. Boats or equipment may be inspected at any time for compliance with class rules and sailing instructions.

17. TRASH DISPOSAL

- 17.1. [NP] As sailors, we seek to protect and restore our oceans and inland waters. See rule 55. Trash may be placed aboard race committee boats.

18. PRIZES

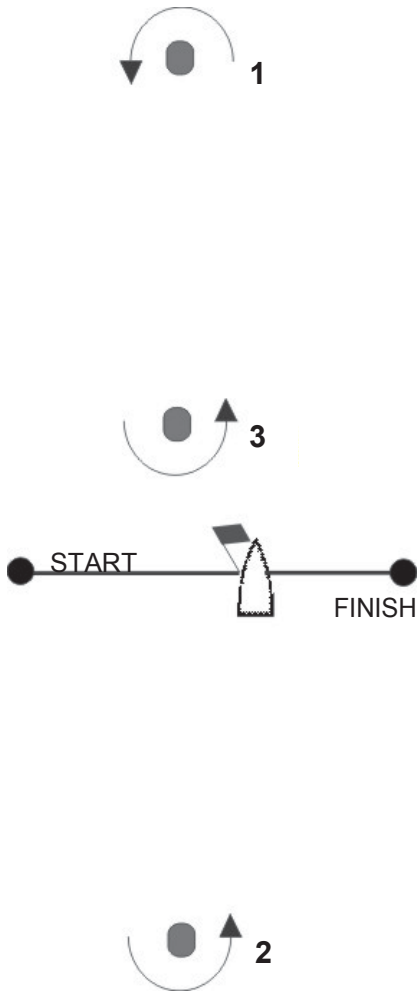
- 18.1. Prizes will be awarded in each rig fleet to the top boats, the first woman overall, and the first junior (under 18) overall.
- 18.2. Additional prizes may be awarded at the discretion of the organizing authority.

19. RISK, DISCLAIMER OF LIABILITY, & PERSONAL CONDUCT

- 19.1. Competitors participate in the regatta at their own risk. See Rule 4 (Decision to Race). The organizing authority will not accept any liability for material damage or personal injury or death sustained in conjunction with or prior to, during, or after the regatta.
- 19.2. Competitors will accept full responsibility for all their action during any activity related to this event. This includes on-shore activities before, during, and after the regatta.

AERO COURSES:

Aero W

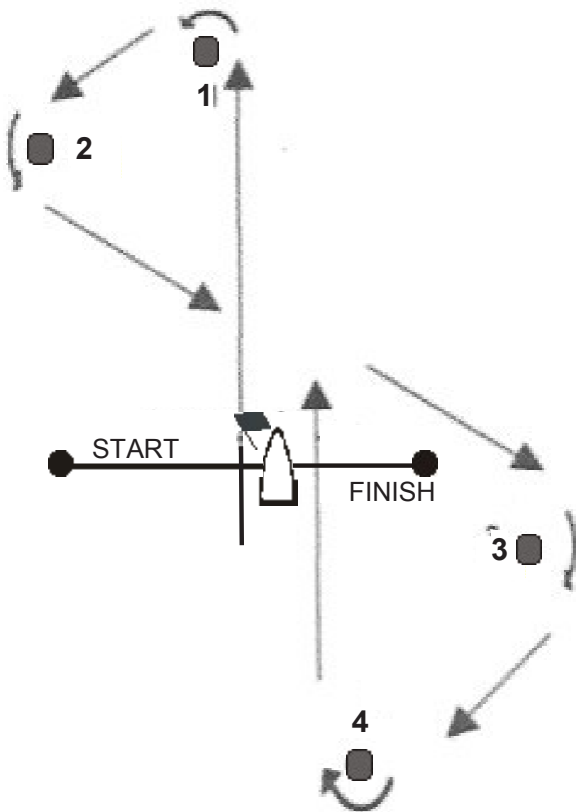


COURSE RS 7 & 9 *
Start - 1 - 2 - 1 - 2 - Finish

COURSE RS 5 *
Start - 1 - 3 - 1 - 2 - Finish

* The Start line only is open.
Round all marks to port.

Aero Z

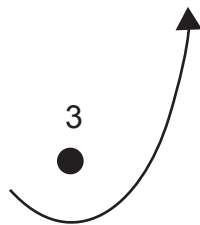
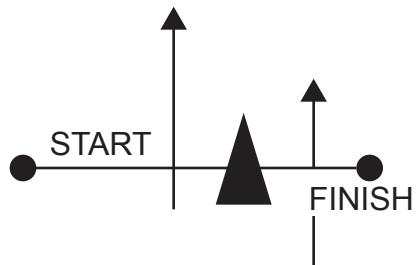


Z **
Start - 1 - 2 - 3 - 4 - Finish

Z2 **
Start - 1 - 2 - 3 - 4 -
1 - 2 - 3 - 4 Finish

** Round marks 1 & 2 to port, 3 & 4 to starboard.

Aero T



T
Start - 1 - 2 - 3 - Finish

T2
Start - 1 - 2 - 3 - 1 - 2 - 3 - Finish

