

**SAILING INSTRUCTIONS**  
**The Wild Bill Rig Race**  
**Saturday, June 9, 2018**  
**Channel Islands Yacht Club 805.985-2492**  
**4100 S Harbor Blvd, Oxnard, CA 93035**

1. **RULES:** This race will be governed by the *rules* as defined in the *Racing Rules of Sailing*, these Sailing Instructions (SIs), SoCal PHRF or ORCA rating rules, and applicable class association rules. The PHRF Marine Industry Racer (MIR) Rule is not in effect. This modifies PHRF Class Rule 8.

Area A Random Leg Course (RLC) ratings will be used. The Race Committee (RC) may assign a temporary rating for this race for boats without a current PHRF or ORCA rating. Any changes to these SIs will be posted at CIYC by 9:30 AM or communicated on the water to each boat before her starting signal.

2. **SCHEDULE:** Advance online registration (RegattaNetwork.com) is encouraged. Onsite registration & mandatory Skippers Meeting is scheduled for 8:30 AM at CIYC. The first warning signal is planned for 10:55 AM.

3. **CLASSES**

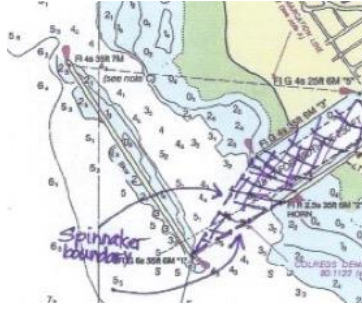
- a. PHRF Spinnaker, NonSpinnaker, and ORCA (multihull) classes are welcome to participate. Class breaks will be announced at the Skippers Meeting.
- b. Class Flags: Numeral pennants will be used
  - Spinnaker A           1
  - Spinnaker B           2
  - Non Spinnaker       3
  - ORCA                   4

4. **THE START**

- a. The races will be started using Rule 26. The order of class starts will be announced at the Skippers Meeting.
- b. Prior to her start, each boat shall check in with the RC by radio (VHF Channel 71) or by hailing the RC boat
- c. After the first class has started, the RC will allow a 1-minute gap between the starting signal of one class and the warning signal of the next class
- d. The port end of the starting line will be the Mandalay spar buoy and the starboard end will be designated by an orange flag on the RC boat
- e. Boats whose warning signal has not been made shall avoid the starting area during the starting sequence for other classes

5. **THE FINISH**

- a. When the first boat to finish is approximately 30 minutes from the Channel Islands Harbor entrance, the RC requests to be notified (VHF Channel 71 or Phone to CIYC, 805.985.2492, or the PRO, 805.822.7544) to assure that the RC is at the finish line when the boats finish
- b. Spinnakers must be doused prior to entering the area between the southern end of the detached breakwater (Green #1) and either attached jetty (Green #3 when entering from the north or Red #2 when entering from the south). Any boat sailing beyond this point with a spinnaker set will be scored DSQ by the RC. This changes Rules 63.1 and A5.



- c. The port end of the finish line is the CIYC flagpole (N 34°09.8' W 119°13.5') and extends on a bearing of 052°M to a lone palm tree as the starboard end, near the launch ramp on the opposite side of the harbor. The RC will acknowledge each boat's finish with a horn blast.
- d. A boat that starts but subsequently retires without finishing shall notify the RC at her earliest opportunity (VHF Channel 71 or Phone to CIYC, 805.985.2492, or the PRO, 805.822.7544).

## 6. THE COURSES

- a. The courses will be chosen from the 2018 Wild Bill Course Chart, which is part of these Sailing Instructions
- c. The RC will signal the course number for the first starting class before or with the class warning signal. For succeeding classes the RC will signal their course numbers with (or as soon as possible after) the warning signal for that class. This changes Rule 27.1.
- d. When an oil platform is a mark of the course, its associated mooring buoy(s) are also marks of the course.

## 7. HEADSAIL LIMITATIONS

- a. More than one headsail may be set and carried, and the headsails need not be attached to the forestay. This changes Rule 50.1.
- b. All headsails must comply with Rule 50.4.
- c. The use of a headsail larger than 155% LP will be penalized 6 seconds per mile unless the larger sail is already included in the boat's rating

8. **PROTESTS:** Protests shall be delivered to the RC within 1 hour of the finish of the protesting boat, or within 1 hour of her return to her harbor if she retires. Protest forms are available online at US Sailing or at CIYC.

9. **SAFETY EQUIPMENT:** Each skipper is responsible for compliance with applicable US Sailing Safety Equipment Requirements for Nearshore. The RC reserves the right to disqualify nonconforming boats. All boats shall carry a VHF radio with Channels 16 and 71. The minimum number of persons aboard shall be 2. The RC will monitor VHF Channel 71 throughout the race.

10. **PRIZES:** Individual prizes will be awarded at Channel Islands Yacht Club after racing. The Wild Bill Rig Race Perpetual Trophy will be engraved with the winners' names and classes. The Perpetual Trophy shall be displayed at Channel Islands Yacht Club.

# 2018 WILD BILL RIG RACE

## COURSE CHART

| Course # | Distance (nm) | Race Mark Roundings (see code below) | Approx Bearing to 1 <sup>st</sup> Mark |
|----------|---------------|--------------------------------------|--|
| 1        | 8.5           | S G3(p) Fc                           | 170°M                                  |
| 2        | 12.5          | S G3(p) B(s) Fc                      | 170°M                                  |
| 3        | 14            | S G1(p) Fc                           | 220°M                                  |
| 4        | 16.2          | S G1(p) G3(p) Fc                     | 220°M                                  |
| 5        | 17.2          | S G2(p) Fc                           | 220°M                                  |

### MARKS

### APPROXIMATE LOCATION

|           |   |                                |
|-----------|---|--------------------------------|
| <b>A</b>  | Fish Sticks spar buoy                                   | L: 34° 14.4'N; Lo: 119° 19.9'W |
| <b>B</b>  | "WES" spar buoy   | L: 34° 09.9'N; Lo: 119° 16.4'W |
| <b>Fc</b> | Channel Islands Harbor finish, see sailing instructions |                                |
| <b>H</b>  | Hueneme buoy, R "2"                                     | L: 34° 08.0'N; Lo: 119° 13.0'W |
| <b>G1</b> | Platform Gail   | L: 34° 07.5'N; Lo: 119° 24.0'W |
| <b>G2</b> | Platform Gilda  | L: 34° 10.9'N; Lo: 119° 25.1'W |
| <b>G3</b> | Platform Gina   | L: 34° 07.0'N; Lo: 119° 16.6'W |
| <b>G4</b> | Platform Grace  | L: 34° 10.8'N; Lo: 119° 28.1'W |
| <b>M</b>  | Mandalay spar buoy                                      | L: 34° 12.0'N; Lo: 119° 16.5'W |
| <b>R2</b> | Whistle buoy R "2" at Ventura Harbor                    | L: 34° 14.4'N; Lo: 119° 16.7'W |
| <b>S</b>  | Start in vicinity of Mark M                             |                                |

