

US Sailing Area C Bemis and Smythe

US Sailing's Chubb U.S. Junior Sailing Championships Area C Championship

The U.S. Junior Doublehanded Championship for the Bemis Trophy
The U.S. Junior Singlehanded Championship for the Smythe Trophy

Organizing Authority (OA): Corinthian Yacht Club of Cape May (CYCCM) and US Sailing

Sailing Instructions July 8, 2018 (Rev A)

1. RULES

- 1.1. The regatta will be governed by the rules as defined in The Racing Rules of Sailing 2017-2020 (RRS), and the Prescriptions of US Sailing. Applicable Prescriptions will be posted on the Official Notice Board.*
- 1.2. The following documents shall apply:
 - 1.2.1. [US Sailing Regulations 2.02, 4.02, 13, 14.04](#)
 - 1.2.2. [US Sailing Regulation 10](#). An alleged breach of US Sailing Regulation 10 shall not be grounds for a protest by another boat; this changes rules 60.1(a), 60.2(a) and 60.3(a). However, when a protest committee believes that a competitor may have breached Regulation 10.03, it shall follow the process described in the Championships' Code of Conduct.
 - 1.2.3. The sections of the [Conditions for the Junior Sailing Championship](#) applicable to the Area Championships.
 - 1.2.4. [US Sailing's SafeSport Handbook](#)
 - 1.2.5. [US Sailing's Code of Conduct](#)
 - 1.2.6. [The US Sailing Championship Support Vessel Policy](#). This will be a Grade 3 Coaching event.
- 1.3. This Championship is not being conducted as a sanctioned or class association event. Only the Equipment Measurement Rules for the **C420 and Laser Radial** classes will apply.
- 1.4. RRS 40 is changed so that each competitor shall wear a USCG approved life jacket that is 100% dependent on foam for flotation and the appropriate size for the sailor, at all times while on the water, except for brief periods while adding or removing clothing. (US Sailing Regulation 10) A violation of this instruction may be protested by race officials or a competitor; however an inadvertent and momentary breach of this instruction may receive a penalty less than disqualification at the discretion of the protest committee. This changes rule 64.1. [DP]*
- 1.5. RRS 60.1(a) is changed to add: prohibit a boat from protesting another boat for an alleged breach of any class rule other than class equipment measurement rules.
- 1.6. RRS 61.1(a) is changed to add: "A boat intending to protest about an incident that occurs in the racing area shall notify the Race Committee (RC) finish boat of her intention as soon as possible after finishing, including the boat identification number of the boat(s) being protested."
- 1.7. The notation "[DP]" in a rule in the SI means that the penalty for a breach of that rule may, at the discretion of the protest committee, be less than disqualification.

2. NOTICES TO COMPETITORS

Notices to Competitors will be posted on the official regatta notice board located on the Porch of the CYCCM Sailing Building AKA Wally World. All boats must check in before 0930 at the registration table inside the club house. At check in boats will be given a copy of the SI and bow numbers. Each boat must have bow numbers displayed on each side of the boat within 12 inches from the bow.

3. CHANGES TO SAILING INSTRUCTIONS

Changes to the SIs will be posted no later than 20 minutes after the close of skippers briefing on the day of the races, except any change to the schedule of races will be posted no later than Monday July 9 at 0830.

4. SIGNALS MADE ASHORE

- 4.1. Signals ashore will be displayed from mast of Club boat "Ovah". If Ovah is unavailable signals will be displayed on the club mast.
- 4.2. When flag AP is displayed ashore, "1 minute" is replaced with "not less than 60 minutes" in the race signal AP.

5. SAFETY AND PERSONAL EQUIPMENT

- 5.1. Before the warning signal of the first race in which they intend to compete each day, boats shall check in by sailing on starboard tack of the RC signal boat. Each boat shall hail her bow and sail number until acknowledged by the signal boat. Failure to check in may result in a penalty. [DP]
- 5.2. A boat retiring from a race shall notify a RC vessel before leaving the course, or, when that is impossible, immediately after arrival ashore. [DP]
- 5.3. The only gear, rigging, or equipment that a competitor may take aboard a boat is: a refillable water bottle, class-legal compass, flags, plastic bucket or bailer, normally equipped ditty-bag, personal effects, PFDs and protective clothing. For the C420 discipline, competitors may also bring aboard their personal trapeze harness. [DP]
- 5.4. GPS devices are specifically prohibited. [DP]

6. SCHEDULE OF RACES

Monday July 9	0800-0945	Check in, breakfast refreshments, boat set up.
	1000	Skipper and crew briefing
	1045 1145 Time	Harbor Start Warning signal for first race of the day; subsequent races to follow No Warning Signal after 1545 Awards and refreshments immediately after racing.

- 6.1. There are a maximum of 5 races scheduled.
- 6.2. The Order of Start will be: C420 Fleet first followed by Laser Radials. The RC may change the order of start on the water.
- 6.3. The warning signal for succeeding races will be made as soon as possible after finish of preceding race.
- 6.4. To alert boats that a race will begin soon, the race committee will make a series of repetitive sound signals shortly before the warning signal for the first class.
- 6.5. Weather conditions, the need to protect boats and equipment, or the need to expedite the completion of the event may require procedures other than those mentioned in these SIs. Any such special procedures must be approved by the Protest Committee (PC).
- 6.6. Shortened Event. Should wind, weather or other conditions make it impossible to complete the scheduled number of races within the publicized time, the event shall be terminated and the results based on the completed number of races. Termination and decisions regarding results shall be made by the PC

7. CLASS FLAG

Class flags will be: a Laser Class Logo Flag. Red with a White Logo. C420 Flag will be a 420 Class flag White with Blue letters.

8. RACING AREA

Attachment A shows the location of racing areas. The Racing area will be either on the West Course which is approximately 1 miles west of the 2CM Buoy off Cape May City Beaches, or the East Course which is about 1 mile east north east of 2CM off Wildwood Crest. The RC will announce which course will be used at skippers briefing.

9. THE COURSE

- 9.1. The diagrams in Attachment B show the courses, including the course signals, the order in which marks are to be passed, and the side on each mark is to be left.
- 9.2. Courses will be windward leeward courses. Designated as “W#” where # is the number of legs to be sailed. Even numbered legs shall finish downwind, odd number legs will finish upwind. Typical courses will be W2,W3,W4,W5. Sample Course diagrams are depicted in Attachment B. Courses may have offset marks and/ or gates. If gates are present boats must pass through and round either gate mark.
- 9.3. If one of the gate marks is missing, the mark in position will be rounded to port.
- 9.4. No later than the warning signal, the RC signal boat shall display the course designation and the approximate compass bearing of the first leg on the Course board on the stern of the signal boat.

10. MARKS

- 10.1. Rounding marks will be – Orange Tetrahedrons
- 10.2. New marks will be – Yellow Tetrahedrons
- 10.3. The starting line pin end mark will be a large yellow Dumpy ball.
- 10.4. The RC may change the color or shape of the marks by notifying competitors on the water before the race begins.

11. THE START

- 11.1. Races will be started using rule 26.
- 11.2. The starting line will be between a staff displaying an orange flag on the RC signal boat and the course side of the mark or, a staff displaying an orange flag on a RC boat at the port end of the line. If a boat is used on the pin end for a start, the boat will be replaced by a mark for the finish.
- 11.3. A boat starting later than 4 minutes after her starting signal will be scored DNS. This changes rules 35, 63.1 and A5.

12. RECALLS

- 12.1. The RC will attempt to hail the recall numbers of OCS boats after the starting signal. This changes rule 29.1.
- 12.2. The RC may hail by sail number or bow number or Boat Name.
- 12.3. The failure of any boat to hear the hail, promptness of the hail, failure to hail any boats, or the order of boats hailed shall not be grounds for redress. This changes rule 62.1.

13. CHANGE THE NEXT LEG OF THE COURSE

To change the next leg of the course, the RC will lay a new mark (or move the finishing line) and remove the old marks as soon as practicable. Rule 33.2 (a) (2) is changed to: “a green flag for a change to starboard, a red flag for a change to port.”

14. THE FINISH

The finishing line will be between a staff displaying an orange flag on a RC boat and the course side of the designated finish mark.

PENALTY SYSTEM –

- 14.1. Appendix V sections V1 and V2 will be in effect.
- 14.2. Rule 44.3 (a) and (b) are not in effect.
- 14.3. Rule 44.3 (C) is changed to the percentage penalty in Appendix V2

15. TIME LIMIT

- 15.1. The time limit for each race will be 60 minutes for the first boat to finish.
- 15.2. Finish Window – boats failing to finish within 15 minutes after the first boat sails the course in accordance with rule 28 and finishes, will be scored TLE (Time Limit Expired) without a hearing. This changes rules 35, 63.1, A4 and A5.

16. EVENT PROTESTS AND REQUESTS FOR REDRESS

- 16.1. A boat is not permitted to protest another boat for breaking SIs 4, 5, 21, or 22. The penalty for breaking these SIs may be less than disqualification at the discretion of the PC. This changes rule 60.1(a).
- 16.2. A boat intending to protest about an incident that occurs in the racing area shall notify the RC finish boat of her intention as soon as possible after finishing, identifying the boat(s) being protested. This changes rule 61.1(a)
- 16.3. Protests forms will be available at and returned to the porch of the Wally Word building.
- 16.4. The protest time limit is 45 minutes after the posted time the RC signal boat docks.
- 16.5. A protest hearing schedule and the location of the hearings will be posted on the official notice board no later than 15 minutes following the end of protest time.
- 16.6. Notice of actions taken by the RC or PC and a list of boats penalized under Appendix P will be on the official notice board.
- 16.7. On the day of the regatta a request for reopening a hearing shall be delivered:
 - a within the protest time limit, or 30 minutes after the decision is announced, whichever is later. This changes rules 62.2 and 66.

17. SCORING

- 17.1. The Low Point System of Appendix A will apply.
- 17.2. Boats scored TLE shall be scored points equal to one more than the finish place of the last boat to finish within the finish window established in SI 16.2. This changes rules 35, 63.1, A4 and A5.
- 17.3. Three (3) races are required to be completed to constitute a series.
- 17.4. When fewer than five (5) races have been completed, a boat's series score will be the total of her race scores.
- 17.5. When five (5) or more races have been completed, a boat's series score will be the total of her race scores excluding her worst score.

18. REPLACEMENT OF EQUIPMENT

Substitution or repair or replacement of hulls, sails, or equipment will not be allowed without prior written approval of the PC. [DP]

19. COACHING AND OUTSIDE CONTACT

- 19.1. This is a Grade 3 Event as defined in the US Sailing Championship Support Vessel Policy. See <https://www.ussailing.org/competition/resources/coaching-and-support-boat-policy/>
- 19.2. Except as provided in the Policy specified above, instructors, coaches and other support personnel and family members shall not go afloat in the defined racing area at any time during the event, except in spectator boats supplied by CYCCM and reserved prior to the start of the event according to Amendment 1 of the NoR.

20. PROHIBITED SUBSTANCES –

US SAILING REGULATION 10.03 B AND 10.03 C, STATE:*

B. For Junior and Youth events or for junior or youth competitors in any US Sailing championship, no participant or competitor shall use or possess, either on or off the water: 1. marijuana or any other substance if possession is illegal under state or federal law; or 2. any alcoholic beverages.

C. An alleged breach of one of these regulations shall not be grounds for a protest; this changes rules 60.1(a), 60.2(a) and 60.3(a). However, when the protest committee believes that a competitor may have breached one of these regulations, it shall follow the process described in the Championships Code of Conduct. If a competitor is found to have breached one of the elements within the Code of Conduct, they shall be excluded from the remaining races of the series and, where practicable, removed from the regatta venue and sent home. The competitor's boat shall be disqualified from all races of the series.

21. CONDUCT OF COMPETITORS*

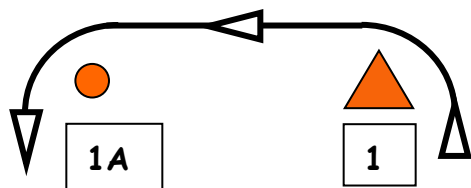
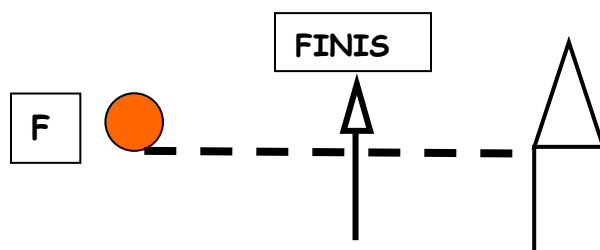
- 21.1. All competitors are expected to maintain the highest levels of conduct throughout the entire event. Enforcement of discipline and conduct will be conducted as per the Racing Rules of Sailing (RRS 69.1) and the policies and procedures of US Sailing.

22. PRIZES

- 22.1. The top finishing, eligible team(s) will qualify for US Sailing's Chubb U.S. Junior Sailing Championships. Eligibility is defined as per the 2018 Chubb US Junior Championship NoR.*
- 22.2. Teams who qualify for Chubb U.S. Junior Sailing Championship must submit their registration to the event by June 15 or within three days of qualification, if the qualification event concludes after June 15. Failure to register within the deadline will mean the next eligible boat may move forward.*
- 22.3. Additional honors: Awards for First and Second Place finishes.



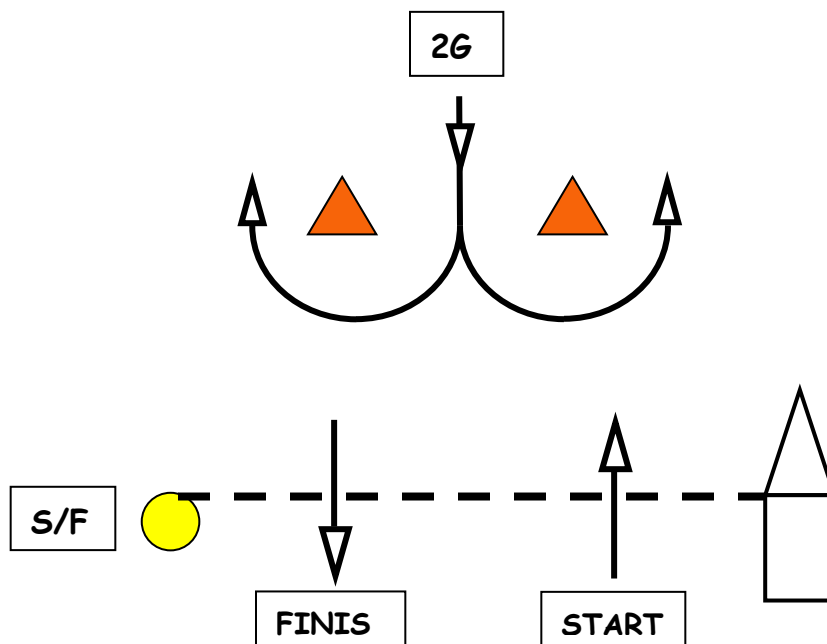
WINDWARD-LEEWARD COURSE DIAGRAM



Attachment B

Course Diagram

NOT TO SCALE



Even Number courses finish down wind (W2, W4 & W6). Odd Number courses finish upwind (W3 & W5)

Example: COURSE W4: START-1(port)-1A(port)-2G-1(port)-1A(port)- FINISH(downwind)

Example: COURSE W3: START-1(port)-1A(port)-2G-FINISH(upwind)

Note Start Pin end may be a boat with orange flag