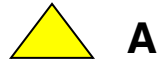
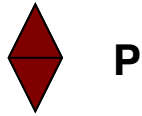
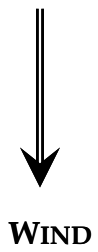


# ADDENDUM A – Buoy Races



## Marks:

**P:** Post Point NAV Buoy  
(R "2", Fl R 4s, Bell)

**Q:** NAV Buoy  
(RG, Fl (2+1) R 6s, Bell)

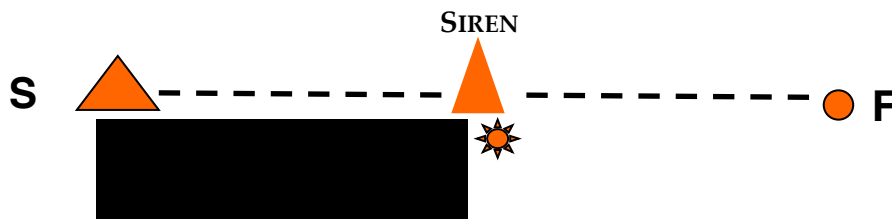
**A:** Yellow weather

**X:** Orange weather

**C:** Yellow leeward

 Restricted start area

**Z:** Yellow leeward, 0.2 NM or less to weather of RC start boat



 Stand-off ball (if deployed)

**ALL TURNING MARKS TO BE LEFT TO PORT**



## COURSE DESCRIPTIONS

<b>A</b>	<b>S A C F</b>
<b>B</b>	<b>S A C A C F</b>
<b>C</b>	<b>S X C F</b>
<b>D</b>	<b>S X C X C F</b>
<b>F</b>	<b>S A C X C F</b>
<b>G</b>	<b>(See Addendum B)</b>
<b>H</b>	<b>(See Addendum B)</b>
<b>J</b>	<b>S X C A C F</b>
<b>K</b>	<b>S X Z X C F</b>
<b>L</b>	<b>S A Z A C F</b>
<b>M</b>	<b>S A Z X C F</b>
<b>T</b>	<b>S A C A F (DOWNWIND)</b>
<b>W</b>	<b>S X C X F (DOWNWIND)</b>
<b>X</b>	<b>S P C F</b>
<b>Z</b>	<b>S P Z P C F</b>

# **ADDENDUM B – DISTANCE RACES**

**COURSE G (APPROXIMATELY 11.25NM)**

**START**

**LEAVE MARK Q TO PORT**

**LEAVE MARK P TO PORT**

**LEAVE MARK C TO PORT**

**FINISH (UPWIND)**

**COURSE H (APPROXIMATELY 14.25NM)**

**START**

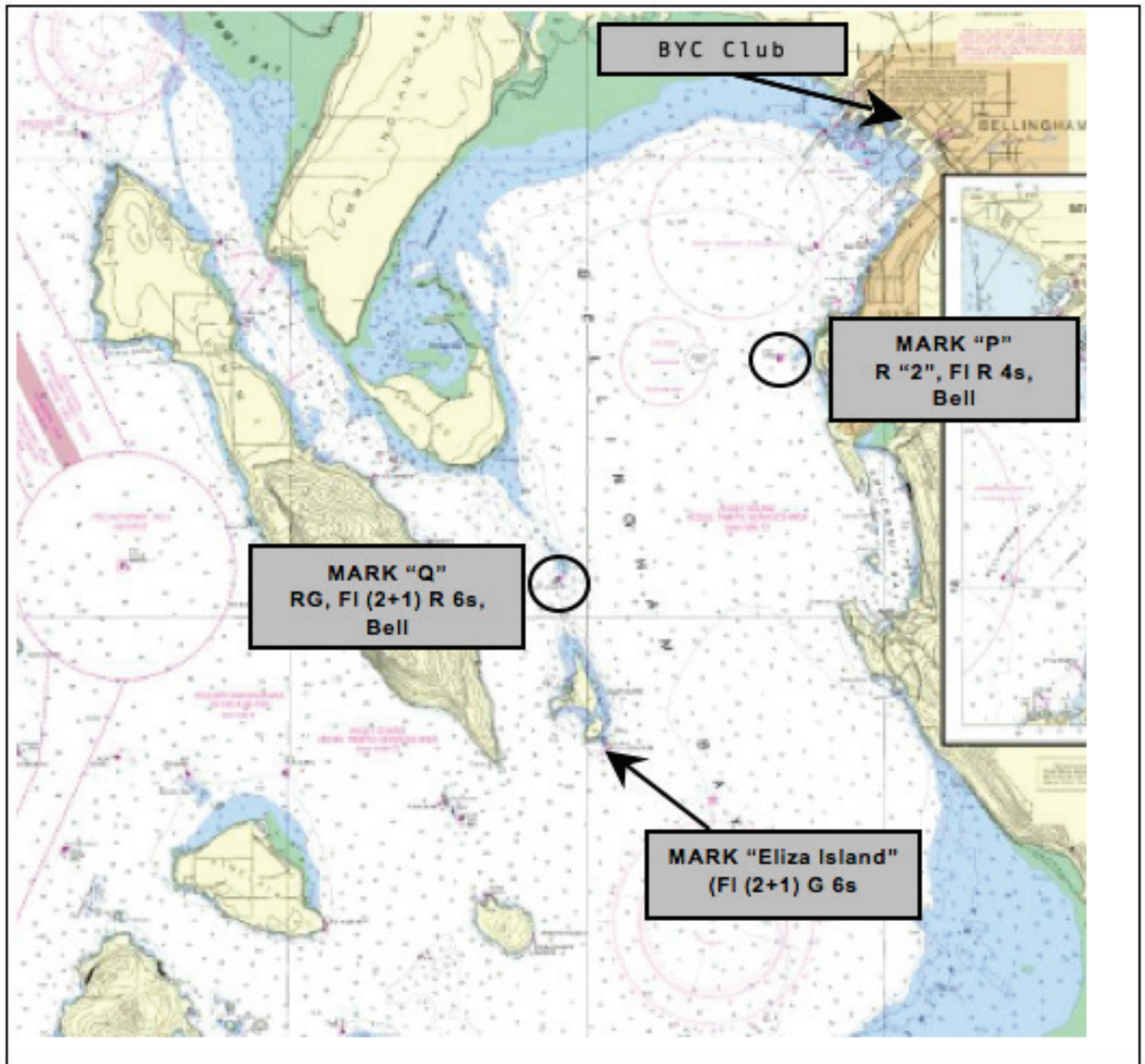
**LEAVE MARK ELIZA ISLAND TO PORT**

*(When rounding Eliza Island, leave Eliza Rock Buoy (Fl 2+1 G 6s) to Port)*

**LEAVE MARK P TO PORT**

**LEAVE MARK C TO PORT**

**FINISH (UPWIND)**



NOAA Nautical Chart 18424  
([www.charts.noaa.gov/RNCs](http://www.charts.noaa.gov/RNCs))  
Not to be used for navigational purposes.