

Sailing Instructions
CCYC Independence Day Regatta
7/4/2018
Corpus Christi, TX

1. Rules

The regatta will be governed by the rules as defined in *The Racing Rules of Sailing*.

2. Notices to Competitors

Notices to competitors will be posted on the official notice board located on the door of the Corpus Christi Yacht Club's Sailing Center.

3. Signals Made Ashore

Signals made ashore will be displayed from the flagpole located at the Corpus Christi Yacht Club. If a postponement is signaled ashore, the warning signal will be made not less than 30 minutes after flag AP is lowered.

4. Schedule and Class Flags

A competitors' meeting will be held at the Corpus Christi Yacht Club Upper Deck at 1:30. The warning signal for the first race will be at 3:00.

The class flag for the 150 Class will be Green.

The class flag for the All Sails Class will be Pink.

If the White class flag is displayed, both fleets will start together ("1 Start" will be displayed on the board).

5. Racing Area

The racing area will be Corpus Christi Bay.

6. Courses and Marks

The courses will be written on the board at the start line. There will be 2 courses: one for "150 Class" and one for "All Sails". Marks may be permanent bay marks or dropped marks. The attached map shows the permanent marks, their locations and the bearing and distance between marks. This map is also available online at <http://ccmorf.org/cc-bay-race-marks/> (click on the link to download the pdf). Dropped marks will be given as a distance and bearing from **the gap** (specifically the green day marker not the cans) not from the start line. Potential drop locations are listed below.

Mark	distance/bearing	Lat/Long
A	1.0NM @ 150° from Gap	27° 47.125'N, 97° 22.595'W
A2	2.0NM @ 150° from Gap	27° 46.252'N, 97° 22.030'W
B	1.0NM @ 135° from Gap	27° 47.281'N, 97° 22.361'W

Mark	distance/bearing	Lat/Long
B2	2.0NM @ 135° from Gap	27° 46.574'N, 97° 21.568'W
C	1.0NM @ 120° from Gap	27° 47.491'N, 97° 22.187'W
C2	2.0NM @ 120° from Gap	27° 46.988'N, 97° 21.210'W
D	1.0NM @ 105° from Gap	27° 47.731'N, 97° 22.069'W
D2	2.0NM @ 105° from Gap	27° 47.474'N, 97° 20.979'W
E	1.0NM @ 90° from Gap	27° 47.989'N, 97° 22.038'W
E2	2.0NM @ 90° from Gap	27° 47.989'N, 97° 20.903'W
M (Marina)	.32NM @ 191° from Gap	White No Wake (in front of Joe's)
X	will be listed on board	

7. Starting and Finishing Lines

The start and finish line will be the Wednesday Night Start Line. An AP made from the start line will constitute an on the water AP.

8. Time Limit

The time limit for each race will be 1 hour 15 minutes for the first boat to finish. Any boats not finished with 30 minutes of the first boat in their class will be finished in place.

9. Protests

Protests shall be delivered to the Corpus Christi Yacht Club Front Desk within 1 hour after the last boat finishes. The protest time limit and a list of protests received will be posted on the notice board. Hearings will be held on Saturday July 7th.

10. Scoring

Three races are scheduled. One race constitutes a series. Scoring will be low point scoring.

Corpus Christi Bay Race Course Marks

GAP		THead		1		2		3		4		5		6		7		55		52		10		71		NAS Pier		12		19		20		43																																	
193°	0.460	13°		144°	0.729	324°		117°	1.302	297°		139°	2.711	319°		99°	3.741	279°		114°	3.067	294°		116°	4.082	296°		87°	6.262	267°		123°	3.308	303°		120°	4.889	300°		69°	1.226	249°		133°	2.722	313°		129°	9.221	309°		118°	10.141	298°		103°	2.482	283°		110°	4.445	290°		85°	7.962	265°	
193°	0.460	13°		144°	0.729	324°		117°	1.302	297°		139°	2.711	319°		99°	3.741	279°		114°	3.067	294°		116°	4.082	296°		87°	6.262	267°		123°	3.308	303°		120°	4.889	300°		69°	1.226	249°		133°	2.722	313°		129°	9.221	309°		118°	10.141	298°		103°	2.482	283°		110°	4.445	290°		85°	7.962	265°	
193°	0.460	13°		144°	0.729	324°		117°	1.302	297°		139°	2.711	319°		99°	3.741	279°		114°	3.067	294°		116°	4.082	296°		87°	6.262	267°		123°	3.308	303°		120°	4.889	300°		69°	1.226	249°		133°	2.722	313°		129°	9.221	309°		118°	10.141	298°		103°	2.482	283°		110°	4.445	290°		85°	7.962	265°	

This information is compiled from GPS data collected by Karl Stein and Owen Hopkins November 2006. The new SABCO well points from Bob Rice were recalculated by Owen Hopkins 8-18-09 in collaboration with Allen Borden and Mark Foster.

DISTANCES (NAUTICAL MILES) AND TRUE BEARINGS BETWEEN MARKS

RACE MARK	DESCRIPTION and IDENTIFICATION	LATITUDE & LONGITUDE	DECIMAL DEGREES	DECIMAL MINUTES
THead	RACE COMMITTEE STARTING LINE MARK ON T-HEAD STARTING LINE EXTENDS TO PAINTED BREAKWATER ROCK	27° 47' 33.4" N 97° 23' 18.0" W	27.7926 97.3883	27° 47.5560 97° 23.2980
GAP	APPROX. MID POINT OF RED & GREEN DAY MARKS FI G 2.5S 17ft 3M "1", AND FI R 2.5s 17ft 3M "2"	27° 48' 00.4" N 97° 23' 10.7" W	27.8000 97.3863	27° 48.0066 97° 23.1783
1	RED DAY MARK FI R 4s 17ft 4M	27° 47' 24.7" N 97° 22' 41.7" W	27.7902 97.3783	27° 47.4120 97° 22.6980
2	MIDWAY BETWEEN 2 LIGHTED WELL HEADS (FI 1s) 61-1 & 71-1	27° 47' 24.4" N 97° 21' 52.1" W	27.7901 97.3644	27° 47.4060 97° 21.8680
3	RED/WHITE DIAMOND DAY MARK FI R 2.5s 17ft 3M "2"	27° 45' 56.3" N 97° 21' 10.7" W	27.7656 97.3530	27° 45.9360 97° 21.1800
4	LIGHTED WELL HEAD (FI 1s) SABCO #1 St Tr 54	27° 47' 23.9" N 97° 19' .025" W	27.7900 97.3167	27° 47.4000 97° 19.0020
5	SEPARATOR PLATFORM FOR PETROHUNT 72-1	27° 46' 44.5" N 97° 20' 0.8" W	27.7790 97.3336	27° 46.7400 97° 20.0160
6	LIGHTED WELL HEAD (FI 1s) SABCO 53 #7	27° 46' 09.4" N 97° 19' 03.3" W	27.7693 97.3176	27° 46.1580 97° 19.0560
7	CUT "A" WEST HIGH RANGE(INBOUND) Iso G 6s 65ft (LIGHT NOT VISIBLE ALL AROUND)	27° 48' 17.9" N 97° 16' 06.0" W	27.8050 97.2683	27° 48.3000 97° 16.0980
55	LIGHTED WELL HEAD (FI 1s) SABCO ST 55 #8	27° 46' 08.8" N 97° 20' 04.5" W	27.7691 97.3345	27° 46.1460 97° 20.0754
52	LIGHTED WELL HEAD (FI 1s) SABCO ST 52 #7	27° 45' 31.0" N 97° 18' 24.0" W	27.7587 97.3067	27° 45.5220 97° 18.4038
10	HIGH RANGE, BRIDGE (OUTBOUND) Iso G 6s 42ft (LIGHT NOT VISIBLE ALL AROUND)	27° 48' 26.3" N 97° 21' 52.7" W	27.8073 97.3646	27° 48.4380 97° 21.8760
71	LIGHTED WELL HEAD (FI 1s) SABCO ST 71 #1	27° 47' 7.32" N 97° 20' 56.6" W	27.7687 97.3490	27° 46.1220 97° 20.9430
NAS Pier	END OF FISHING PIER 9 feet depth	27° 42' 04.1" N 97° 15' 09.8" W	27.7011 97.2527	27° 42.0660 97° 15.1620
12	WHITE OCTAGON DAY MARK(LIGHTED) "C" Mo(A) Ra Ref	27° 43' 05.8" N 97° 13' 07.3" W	27.7183 97.2187	27° 43.0980 97° 13.1220
19	LIGHTED RED WELL HEAD (FI 1s) NO NAME	27° 47' 25.9" N 97° 20' 26.7" W	27.7905 97.3408	27° 47.4300 97° 20.4480
20	LIGHTED WELL HEAD (FI 1s) SABCO ST 53 #6	27° 46' 26.6" N 97° 18' 28.0" W	27.7741 97.3078	27° 46.4460 97° 18.4680
43	CC SHIP CHANNEL GREEN DAY MARK Q G 17ft 3M "43" (SAFE CHANNEL ENTRY POINT) Ra Ref	27° 48' 35.1" N 97° 14' 11.5" W	27.8097 97.2365	27° 48.5850 97° 14.1916

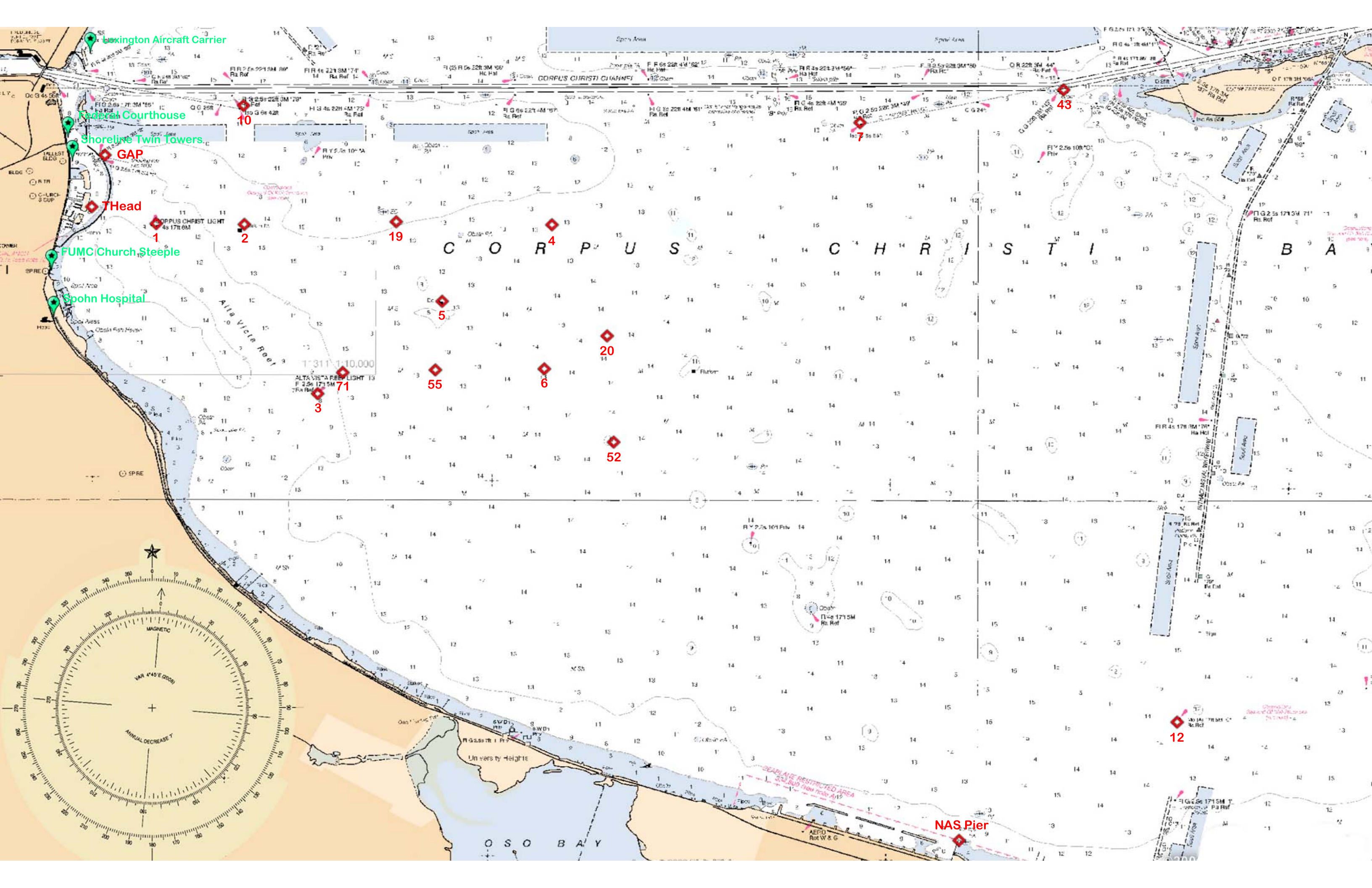
LEXINGTON AIRCRAFT CARRIER 27° 48' 53.6" N
97° 23' 19.2" W

SHORLINE PLAZA TWIN TOWERS 27° 47' 57.4" N
97° 23' 29.1" W

FEDERAL COURTHOUSE 27° 48' 09.6" N
97° 23' 31.6" W

FUMC STEEPLE 27° 47' 00.4" N
97° 23' 40.7" W

SPOHN SHORELINE HOSPITAL 27° 46' 36.0" N
97° 23' 39.3" W



Boxington Aircraft Carrier

Federal Courthouse

Shoreline Twin Towers

GAP

THead

FUMC Church Steeple

Spohn Hospital

10

1

2

3

71

55

6

20

52

4

5

19

43

7

12

NAS Pier

C O R P U S C H R I S T I B A Y

O S O B A Y

