

Heald Bank Offshore Race 2018

Buccaneer Bash

& Pirates' Pig Roast

August 17-18 2018

Lakewood Yacht Club

2322 Lakewood Yacht Club Drive, Seabrook, TX 77586

Organizing Authority: Bay Access Sailing Foundation

SAILING INSTRUCTIONS

The notation '[DP]' in a rule in the Sailing Instructions (SI) means that the penalty for a breach of a rule may, at the discretion of the protest committee, be less than disqualification.

1. RULES

- 1.1 The regatta will be governed by the rules as defined in The Racing Rules of Sailing (RRS).
- 1.2 The following prescriptions of the United States national authority will not apply: 63.2, 63.4
- 1.3
 - 1.3.1 Competitors are reminded that, under the preamble of Part 2 of the RRS, when a boat sailing under the *rules* meets a vessel that is not, the *rules* require that she comply with the International Regulations for Preventing Collisions at Sea (IRPCAS) or government right-of-way rules. As a result, all racing boats shall obey the Rules of the Road and any applicable Coast Guard standoff zones when encountering vessels not racing or intending to race. This is especially true when encountering commercial traffic; boats failing to do so are subject to protest and disqualification.
 - 1.3.2 The Performance Handicap Racing Fleet of Galveston Bay Ratings will apply.
 - 1.3.3 The published Coast Guard standards for safety equipment and night-time lighting requirements will apply.
 - 1.3.4 Boats are encouraged to comply with the requirements for a Race Category 3 event as defined by the US Sailing Safety Equipment Requirements found on the US Sailing website: [link](#)

1.4 Racing Rules are changed as follows:

- 1.4.1 SI 8.2 changes RRS 32.
- 1.4.2 SI 8.3 changes RRS 33
- 1.4.3 SI 11.4 changes RRS A4 and A5.
- 1.4.4 SI 14.1 changes RRS 44.1
- 1.4.5 SI 15.2 changes RRS 35, A4 and A5.
- 1.4.6 SI 16.1 changes RRS Appendix T1 (b).
- 1.4.7 SI 16.8 changes RRS 62.2
- 1.4.8 SI 18.4 changes RRS 42.
- 1.4.9 SI 18.5 changes RRS A5 and 63.1.

1.5 N/A

1.6 N/A

2. NOTICES TO COMPETITORS

- 2.1 Notices to competitors will be posted on the official notice board located online on the Regatta Network page. [Notice Board link](#)

3. CHANGES TO SAILING INSTRUCTIONS

- 3.1 Any written change to the sailing instructions will be posted before 0800 hours on the day it will take effect, except that any change to the schedule of races will be posted by 2000 hours on the day before it will take effect.
- 3.2 Oral changes to the sailing instructions may be given on the water by hail on VHF channel 72 in accordance with RRS 90.2(c).

4. SIGNALS MADE ASHORE

- 4.1 Signals made ashore will be displayed online on the Regatta Network page. [Notice Board link](#)
- 4.2 When flag AP is displayed ashore, “1 minute” is replaced with “not less than 5 hours” in the race signal AP.
 - 4.2.1 Other signals from ashore will be made in Galveston, and they will have their normal meaning as if being made from a race committee signal boat.

5. SCHEDULE OF RACES

- 5.1 Dates of racing:
 - 5.1.1 Friday August 17th, through Saturday August 18th 2018.

5.2 Number of races: One race will be sailed.

5.3 The Scheduled time for the warning signal(s) are:

5.3.1 Non-spinnaker boats, no earlier than 1355 hours.

5.3.2 Spinnaker boats, no earlier than 1415 hours.

5.4 N/A

5.5 N/A

5.6 N/A

6. CLASS FLAGS

Attachment 1 identifies and designates the Class flags.

7. RACING AREAS

Attachment 2 shows the location of the racing areas.

8. THE COURSES

8.1 Classes will sail a course selected from the courses listed in Attachment 2

8.2 Courses will not be shortened. This changes RRS 32.

8.3 Legs of the course will not be changed after the preparatory signal. This changes RRS 33.

9. MARKS

9.1 Available photographs of the offshore marks are attached to these sailing instructions in Attachment 3.

9.2 The starting and finishing marks will be Houston Ship Channel Mark 11 (HSC11), G "11" FI G 2.5s and an orange flag on a staff located on the shore of Galveston Island to the south.

9.3 In the event a mark is missing, boats shall round the GPS coordinates provided in Attachment 2.

10. AREAS THAT ARE OBSTRUCTIONS

N/A

11. THE START

11.1 Races will be started by using RRS 26.

11.2 The Starting Line is a line between Galveston Channel Green Marker #11 and a staff displaying an orange flag located on the southern shoreline, approximately 1,100 yards distance, and at a bearing of

approximately 205 degrees (Magnetic) from HSC Green Marker #11.
Caution: Boats are advised to stay well clear of the shoreline to avoid shoal water!

11.3 Boats whose warning signal has not been made shall avoid the starting area during the starting sequence for other races. [DP]

11.4 A boat that does not start within 60 minutes after her starting signal will be scored Did Not Start without a hearing. This changes RRS A4 and A5.

12. CHANGE OF THE NEXT LEG OF THE COURSE

N/A

13. THE FINISH

13.1 The finishing line will be a line Galveston Channel Green Marker #11 and a staff displaying an orange flag located on the southern shoreline, approximately 1,100 yards distance, and at a bearing of approximately 205 degrees (Magnetic) from HSC Green Marker #11. **Caution: Boats are advised to stay well clear of the shoreline to avoid shoal water!**

13.2 Boats shall attempt to hail the Race Committee on VHF Channel 72 when passing Galveston Channel Marker 5A, identifying the boat by name and sail number.

13.3 Boats shall attempt hail the Race Committee again on VHF Channel 72 when preparing to cross the finishing line, identifying the boat by name and sail number. Boats crossing the finish line at night shall display a light on their mainsail number.

13.4 If the Race Committee is absent or does not acknowledge when a boat finishes, she shall record her finish time as follows: Finish time shall be marked when Galveston Channel Marker Green Marker #11 is at a compass bearing of 025 degrees (Magnetic) from the vessel's helm. GPS time shall be used. She shall report her finishing time and her position in relation to any nearby boats to the race committee at the first reasonable opportunity. This may be done by contacting the PRO, Robert Hunkins no later than 1500 hours, Saturday August 18th, 2018. The information will be transmitted by email (rdhunkins@comcast.net) or by text or voice recording to his mobile phone at (281) 216-4082.

14. PENALTY SYSTEM

14.1 For the PHRF Cruising Classic Canvas non-spin class, RRS 44.1 is changed so that the One - Turn Penalty replaces the Two-Turns Penalty.

14.2 A boat that takes any penalty under RRS 44.2 shall notify the Race Committee at the first reasonable opportunity after finishing, identifying the location, time, and name of any other boat involved in the incident. Racers are reminded of rule 44.1.b (“if the boat caused injury or serious damage or, despite taking a penalty, gained a significant advantage in the race or series by her breach, her penalty shall be to retire”).

15. TIME LIMITS AND TARGET TIMES

15.1 Time limits and target times are as follows:

<i>Time limit</i>	<i>Target time</i>
<i>22 hours after start</i>	<i>17-18 hours after start</i>

15.2 Boats failing to finish within the time limit will be scored Did Not Finish without a hearing. This changes RRS 35, A4 and A5.

15.3 Failure to meet the target time will not be grounds for redress.

16. PROTESTS AND REQUESTS FOR REDRESS

16.1 The protest procedure for this regatta will use Appendix T1 as modified by the following, which changes the alternative penalties. Appendix T1(b) is modified to read: “A Post-Race Penalty is a 20% Scoring Penalty calculated as stated in Rule 44.3 (c) if taken before the protest time limit expires. Otherwise, a Post-Race Penalty is a 30% Scoring Penalty calculated as stated in rule 44.3 (c). However, rule 44.1(a) applies.

16.2 Boats intending to file a protest shall inform the race committee via VHF channel 72 within 10 minutes of that boat’s finishing time.

16.3 Protest forms are available in the LYC Clubhouse Office or through US Sailing [link](#). Protests and requests for redress or reopening shall be delivered there within the appropriate time limit.

16.4 The protest time limit is August 18th, 2018 1700.

16.5 Notices of scheduled hearing times and locations will be posted within thirty (30) minutes of the expiration of the protest time limit to inform competitors of hearings in which they are parties or named as witnesses. Hearings are scheduled to be held in the Harbor room, beginning at the time posted.

16.6 Notices of protests by the race committee or protest committee will be posted to inform boats under RRS 61.1(b).

16.7 N/A

16.8 A request for redress based on a protest committee decision shall be delivered no later than 30 minutes after the decision was posted. This changes RRS 62.2.

17. SCORING

17.1 The Low Point Scoring System of Appendix A will apply.

17.2 All Boats in will be scored using time-on-distance (TOD) scoring.

18. SAFETY REGULATIONS

18.1 Check In - Boats shall check in with the Race Committee on VHF Channel 72 after 1200 on the day the race begins and prior to the warning signal for their class start. Boats shall report the number of individuals aboard. [DP]

18.2 A boat retiring from the race shall notify the Race Committee at the earliest opportunity. Retiring boats shall first attempt to notify the Race Committee via VHF Channel 72. Failing that, a retiring boat shall attempt to notify a competitor on the course for subsequent relay to the Race Committee. A retiring boat shall also notify the Principal Race Officer, Robert Hunkins at cell number (281) 216-4082 no later than August 18th 2018 1200 hours. [DP]

18.3 A boat's failure to check in is not subject to protest by another boat.

18.4 If a skipper determines that it is necessary to use the boat's motor to manoeuvre in order to avoid interfering with a ship's safe passage, he may do so. However, when motoring, the boat may not advance position, and may only use the motoring for clearing the ship passage lane. Once cleared, the boat shall immediately cease motoring. This changes RRS 42. As soon as practical, the skipper shall advise the Race Committee of any action taken in accordance with this rule.

18.5 **Interfering With Commercial Traffic:** A boat is subject to immediate disqualification, without a hearing, if the Race Committee receives a report from a disinterested party that the boat interfered with commercial traffic while transiting to the race area, while *racing*, or while transiting to her mooring after *finishing*. This modifies RRS A5 and 63.1.

19. REPLACEMENT OF CREW OR EQUIPMENT

19.1 Substitution of competitors after the skippers' meeting will not be allowed without prior written approval of the race committee [DP].

20. EQUIPMENT AND MEASUREMENT CHECKS

N/A

21. EVENT ADVERTISING

Competitor advertising will be restricted as follows: As a courtesy to our valued race sponsors, no advertising may be displayed on Lakewood Yacht Club premises without prior written permission of the Race Committee. [DP]

22. OFFICIAL BOATS

N/A

23. SUPPORT BOATS

N/A

24. TRASH DISPOSAL

Trash shall be disposed of in accordance with applicable laws.

25. HAUL-OUT RESTRICTIONS

N/A

26. DIVING EQUIPMENT AND PLASTIC POOLS

N/A

27. RADIO COMMUNICATION

The Race Committee will use VHF Channel 72 to communicate with racers, including the starting sequence. Except when communicating with the Race Committee on VHF Channel 72 as provided for in these Sailing Instructions, all boats should monitor VHF Channel 16.

28. PRIZES

28.1 Prizes will be given as follows:

28.1.1 One trophy: classes with three boats.

28.1.2 Two trophies: classes with four or five boats

28.1.3 Three trophies: classes with six to eight boats

28.1.4 Four trophies: classes with more than eight boats.

28.1.5 The name of overall class winner in the Spinnaker class will be engraved on the Old Winch Trophy.

28.1.6 The name of overall class winner in the non-spinnaker classes will be engraved on the Navigator Trophy.

28.2 The RC may award additional prizes at their discretion.

28.3 The Heald Bank Offshore Regatta is the third of three events of the **Texas Offshore Circuit (TORC)**. (The GBCA Texas Race Week and the HYC Offshore Regatta constitute the other two events.)

28.3.1 **Texas Navy Trophy.** Boats sailing in the PHRF Spinnaker Class will be eligible to compete for the TORC championship trophy, the Texas Navy Trophy, if they have entered all three regattas in the same class. For purposes of Texas Navy Trophy scoring, two races of the Texas Race Week Regatta will be scored, along with one of either the LYC Heald Bank or HYC Offshore. Eligible yachts will be scored against each other, and not against ineligible yachts.

28.3.2 **S. Rhoads Fisher Trophy.** Boats sailing in the PHRF Non-Spinnaker Class will be eligible for the S. Rhoads Fisher Trophy, if they have entered all three regattas in the same class. For purposes of S. Rhoads Fisher scoring, one race of the Texas Race Week Regatta will be scored, along with the LYC Heald Bank and HYC Offshore. Eligible yachts will be scored against each other, and not against ineligible yachts.

29. DISCLAIMER OF LIABILITY

Competitors participate in the regatta entirely at their own risk. See RRS 4, Decision to Race. The organizing authority will not accept any liability for material damage or personal injury or death sustained in conjunction with or prior to, during, or after the regatta.

30. INSURANCE

Each participating boat shall be insured with valid third-party liability insurance with a minimum cover of \$300,000 per incident or the equivalent.

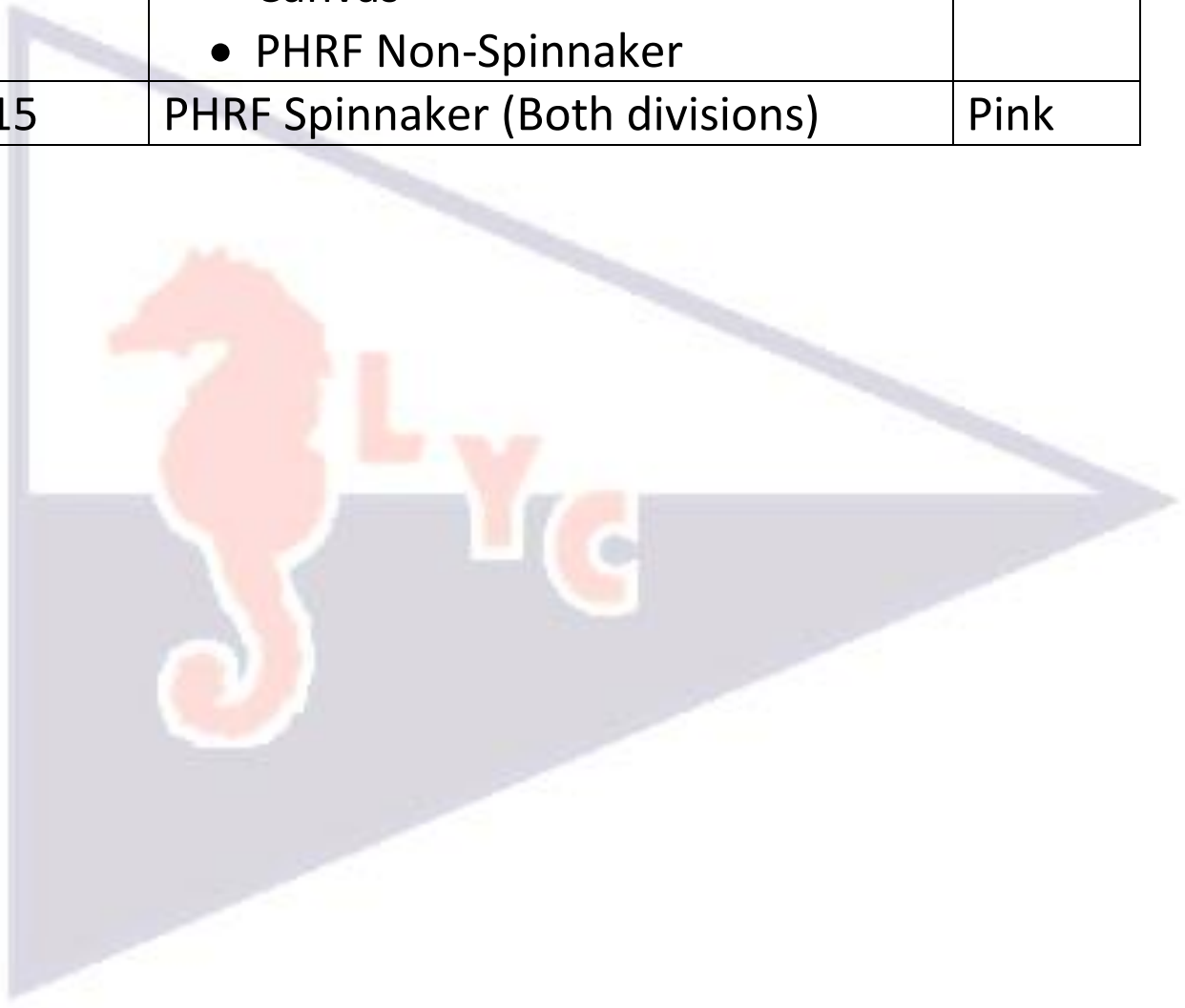
31. ATTACHMENTS

- 31.1 Attachment 1: Class Flags and Starting order
- 31.2 Attachment 2: Mark Locations and Courses
- 31.3 Attachment 3: Photographic images of the marks

ATTACHMENT 1 – Class Flags and Starting Order

August 17, 2018



Warning	Class(es)	Flag
1355	<ul style="list-style-type: none"> • PHRF Cruising non-spin Classic Canvas • PHRF Non-Spinnaker 	Yellow
1415	PHRF Spinnaker (Both divisions)	Pink





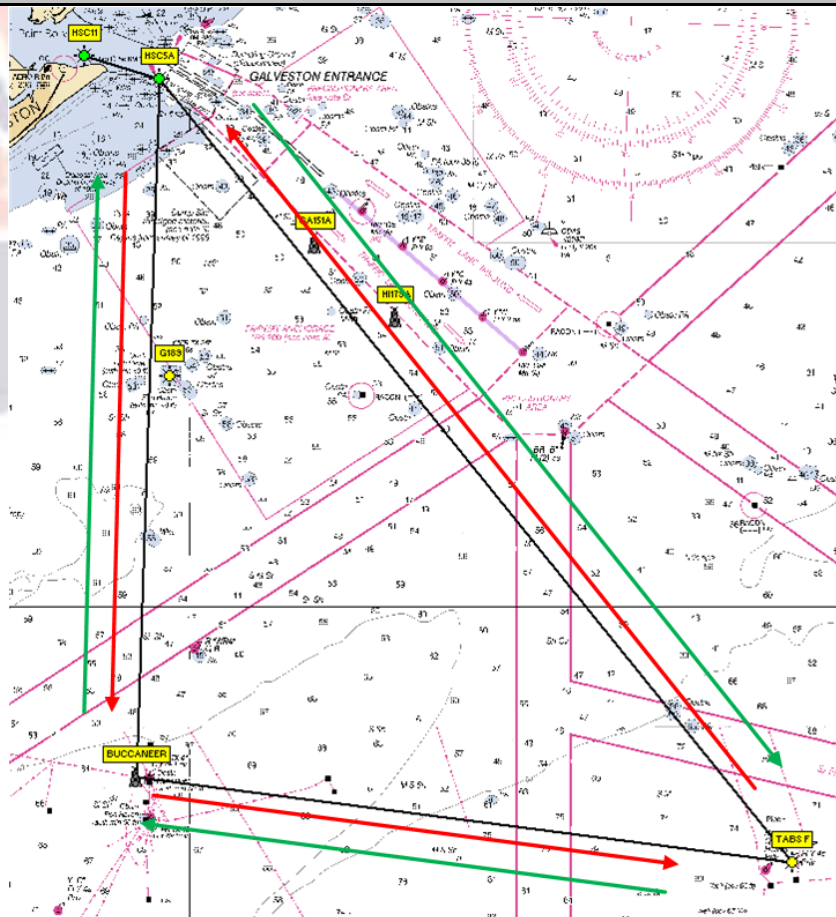
ATTACHMENT 2 –Racing Area and Courses**Mark Locations**

Designation	Latitude	Longitude
HSC 11 (G “11” Fl G 2.5s)	29° 20.530’N	094° 44.470’W
HSC 5A (Iso G 6s 30ft 6M “5A” Ra Ref)	29° 19.642’N	094° 41.275’W
HI 179A (Platform)	29° 10.800’N	094° 31.260’W
Mitchell’s Reef (Y “FR-TX-25” Fl Y 6s Priv)	29° 08.589’N	094° 40.820’W
Buccaneer Rig	28° 53.648’N	094° 42.263’W
TABS B (Y “B” Y 4s Priv)	28° 58.907’N	094° 53.976’W
TABS F (Y “F” Y 4s Priv)	28° 50.482’N	094° 14.467’W

ATTACHMENT 2 –Racing Area and Courses

Course	"1 Red"			
	Leave to:	Bearing(Magnetic)	Leg distance(NM)	Accumulated distance(NM)
Start(HSC 11)	Port			
HSC 5A	Starboard	105	2.93	2.93
Buccaneer	Port	180	25.92	28.84
TABS F	Port	95	24.58	53.43
HSC 5A	Port	319	37.35	90.78
Finish (HSC 11)	Starboard	285	2.93	93.71

Course	"1 Green"			
	Leave to:	Bearing(Magnetic)	Leg distance(NM)	Accumulated distance(NM)
Start(HSC 11)	Port			
HSC 5A	Starboard	105	2.93	2.93
TABS F	Starboard	139	37.35	40.28
Buccaneer	Starboard	275	24.58	64.86
HSC 5A	Port	360	25.92	90.78
Finish (HSC 11)	Starboard	285	2.93	93.71

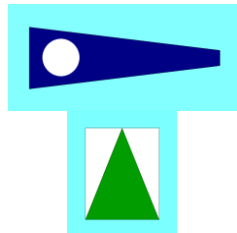
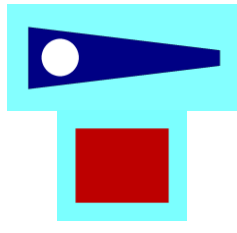


ATTACHMENT 2 – Racing Area and Courses

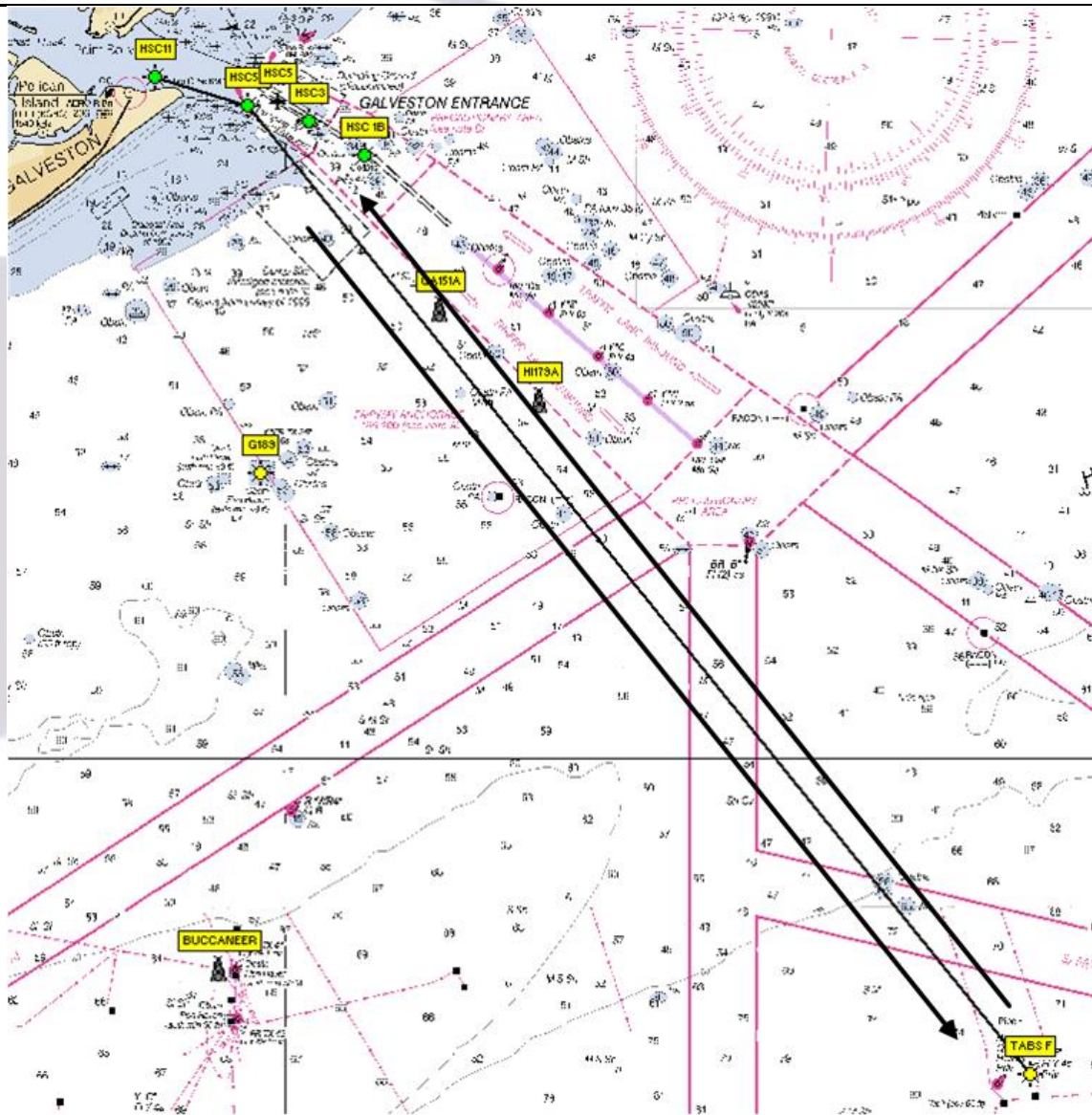
Course

“2 Red”

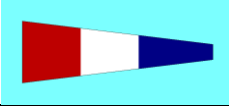
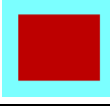
“2 Green”

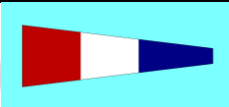



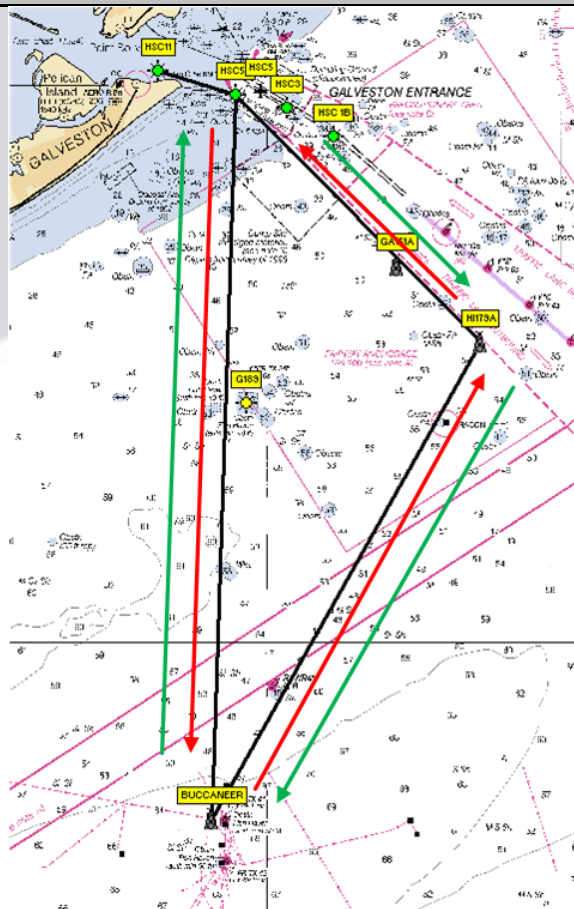
	Leave to:	Leave to:	Bearing (Magnetic)	Leg Distance(NM)	Total Distance(NM)
Start (HSC 11)	Port	Port	--	--	--
HSC 5A	Starboard	Starboard	105	2.93	2.93
TABS F	Port	Starboard	139	37.35	40.28
HSC 5A	Port	Port	319	37.35	77.63
Finish (HSC 11)	Starboard	Starboard	285	2.93	80.56



ATTACHMENT 2 –Racing Area and Courses

Course	"3 Red"			
	Leave to:	Bearing(Magnetic)	Leg distance(NM)	Accumulated distance(NM)
Start (HSC 11)	Port			
HSC 5A	Starboard	105	2.93	2.93
Buccaneer	Port	180	25.92	28.85
HI 179A	Port	27	19.62	48.47
HSC 5A	Port	313	12.42	60.89
Finish (HSC 11)	Starboard	285	2.93	63.82

Course	"3 Green"			
	Leave to:	Bearing(Magnetic)	Leg distance(NM)	Accumulated distance(NM)
Start (HSC 11)	Port			
HSC 5A	Starboard	105	2.93	2.93
HI 179A	Starboard	139	12.42	15.35
Buccaneer	Starboard	276	19.62	34.97
HSC 5A	Port	360	25.92	60.89
Finish (HSC 11)	Starboard	285	2.93	63.82

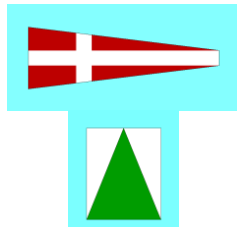
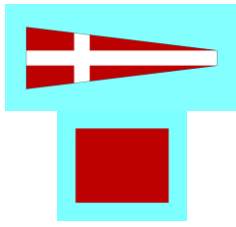


ATTACHMENT 2 –Racing Area and Courses

Course

“4 Red”

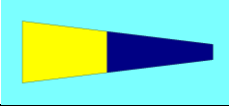
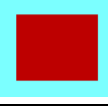
“4 Green”

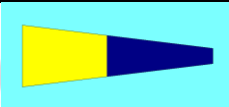



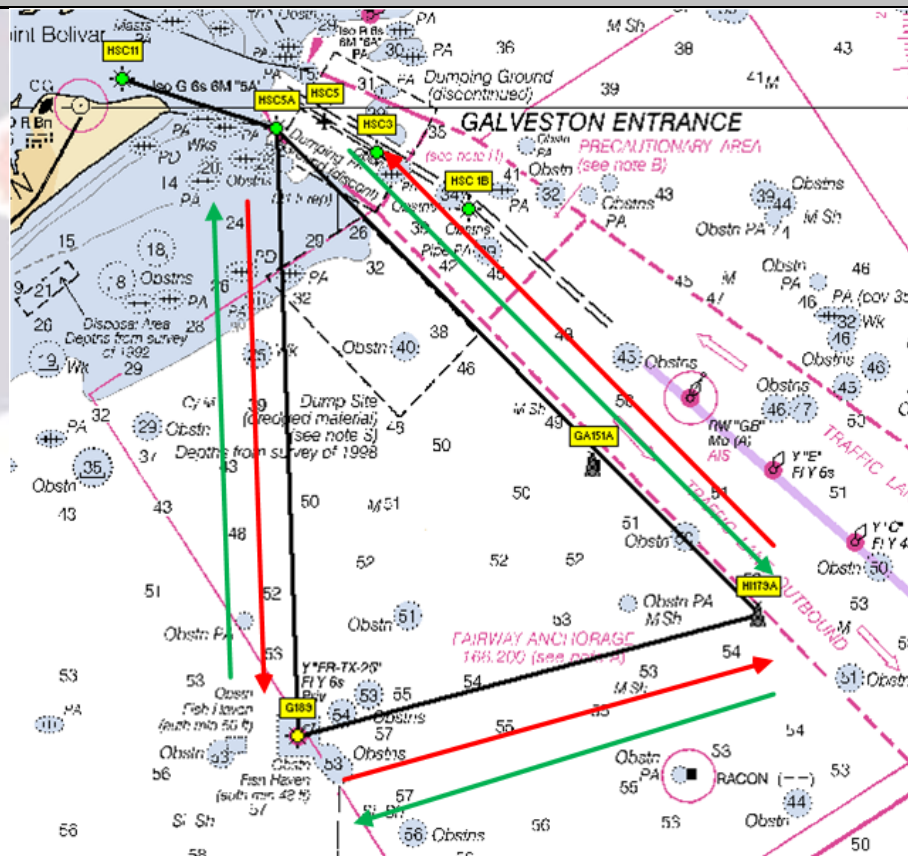
	Leave to:	Leave to:	Bearing (Magnetic)	Leg Distance(NM)	Total Distance(NM)
Start (HSC 11)	Port	Port	--	--	--
HSC 5A	Starboard	Starboard	105	2.93	2.93
Buccaneer	Port	Starboard	180	25.92	28.85
HSC 5A	Port	Port	360	25.92	54.77
Finish (HSC 11)	Starboard	Starboard	285	2.93	57.70



ATTACHMENT 2 –Racing Area and Courses

Course	"5 Red"			
	Leave to:	Bearing(Magnetic)	Leg distance(NM)	Accumulated distance(NM)
Start (HSC 11)	Port			
HSC 5A	Starboard	105	2.93	2.93
Mitchell's Reef	Port	176	11.02	13.95
HI179A	Port	73	8.65	22.60
HSC 5A	Port	313	12.42	35.02
Finish (HSC 11)	Starboard	285	2.93	37.95

Course	"5 Green"			
	Leave to:	Bearing(Magnetic)	Leg distance(NM)	Accumulated distance(NM)
Start (HSC 11)	Port			
HSC 5A	Starboard	105	2.93	2.93
HI179A	Starboard	133	12.42	15.35
Mitchell's Reef	Starboard	253	8.65	23.99
HSC 5A	Port	356	11.02	35.02
Finish (HSC 11)	Starboard	285	2.93	37.95

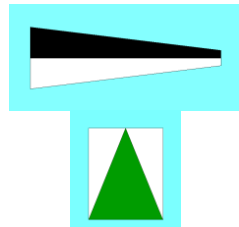
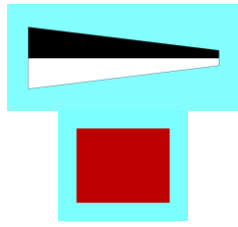


ATTACHMENT 2 –Racing Area and Courses

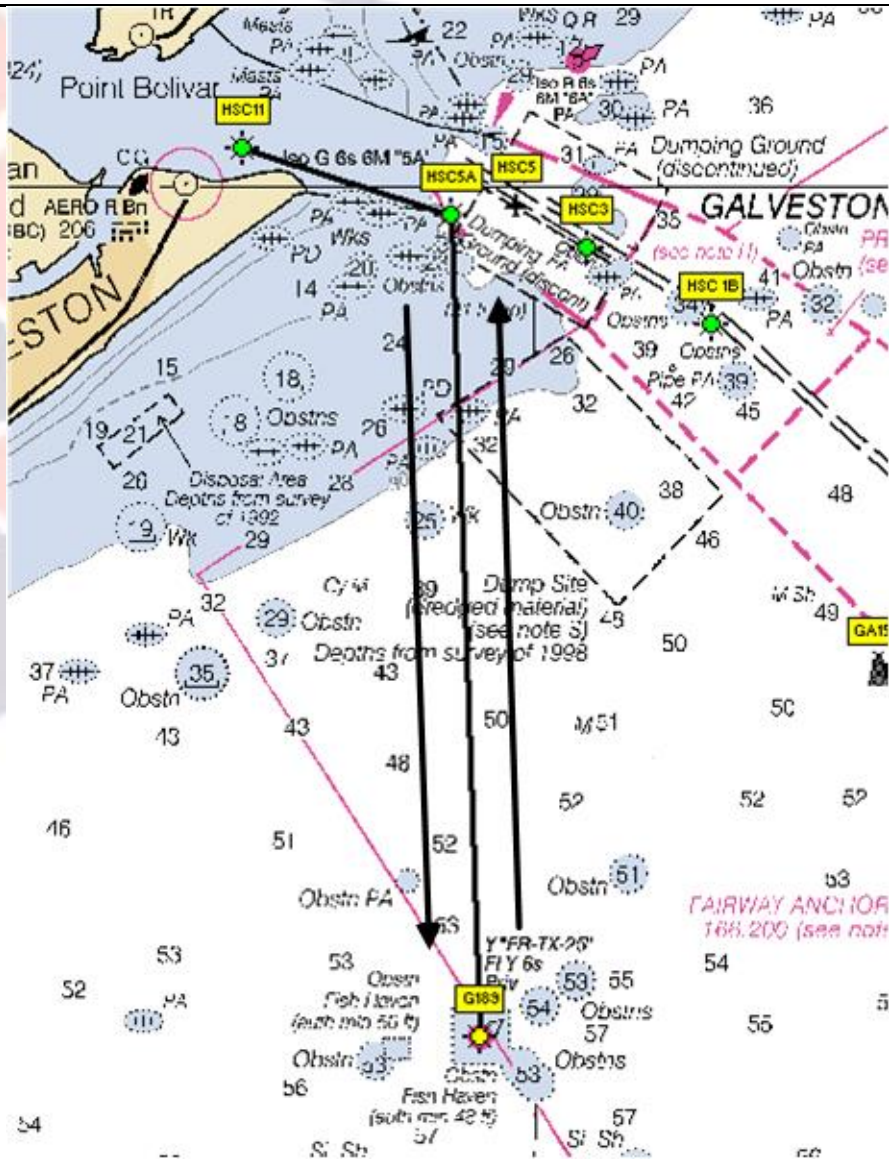
Course

“6 Red”

“6 Green”



	Leave to:	Leave to:	Bearing (Magnetic)	Leg Distance(NM)	Total Distance(NM)
Start (HSC 11)	Port	Port	--	--	--
HSC 5A	Starboard	Starboard	105	2.93	2.93
Mitchell's Reef	Port	Starboard	176	11.02	13.95
HSC 5A	Port	Port	356	11.02	24.97
Finish (HSC 11)	Starboard	Starboard	285	2.93	27.90

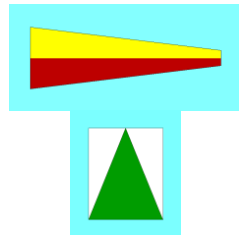
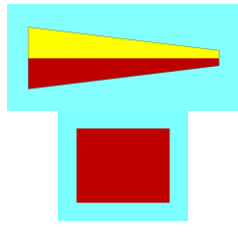


ATTACHMENT 2 –Racing Area and Courses

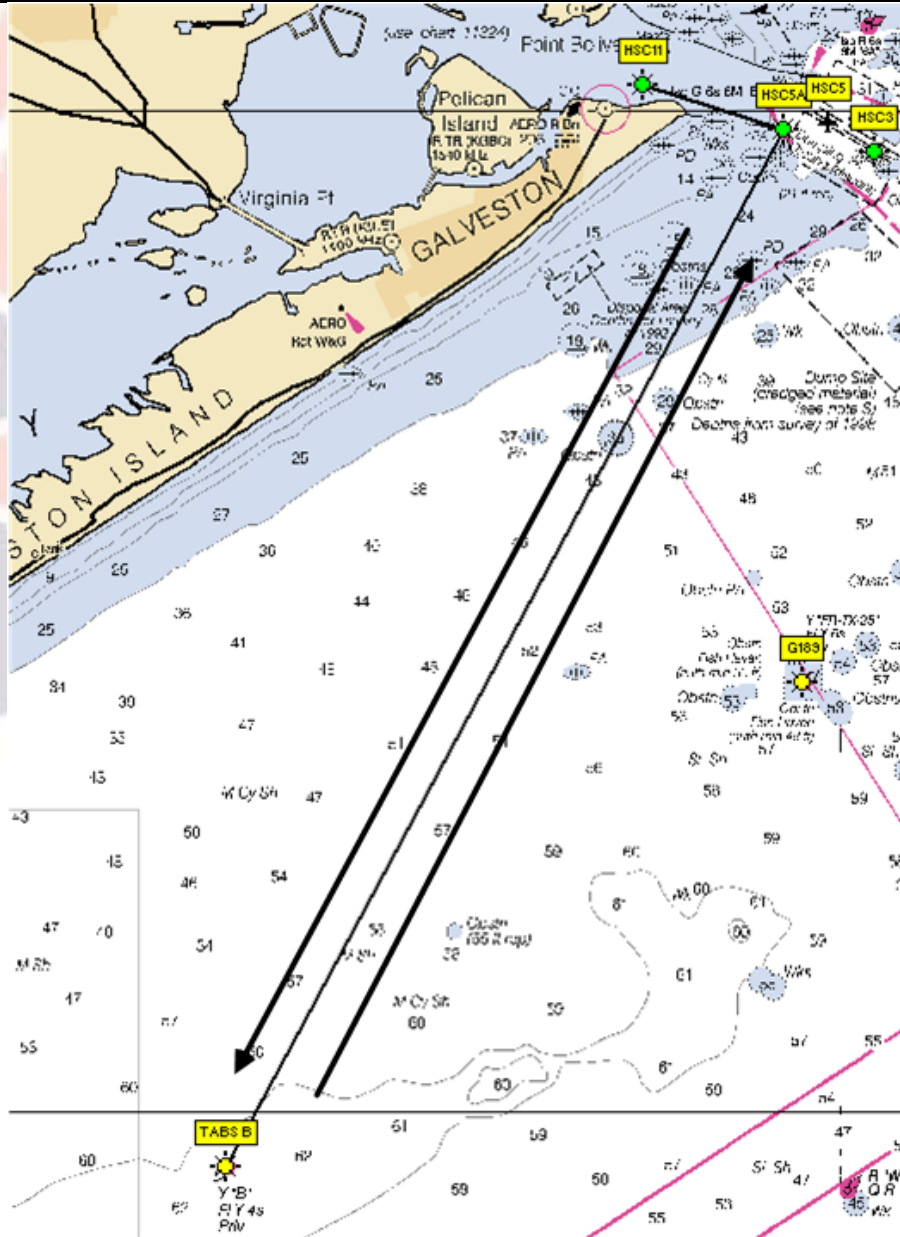
Course

“7 Red”

“7 Green”



	Leave to:	Leave to:	Bearing (Magnetic)	Leg Distance(NM)	Total Distance(NM)
Start (HSC 11)	Port	Port	--	--	--
HSC 5A	Starboard	Starboard	105	2.93	2.93
TABS B	Port	Starboard	206	23.46	26.39
HSC 5A	Port	Port	26	23.46	49.85
Finish (HSC11)	Starboard	Starboard	285	2.93	52.78



ATTACHMENT 3 –Photographic Images of the marks

Buccaneer Rig
Approx.
28° 53.648' N
094° 42.263' W



ATTACHMENT 3 –Photographic Images of the marks

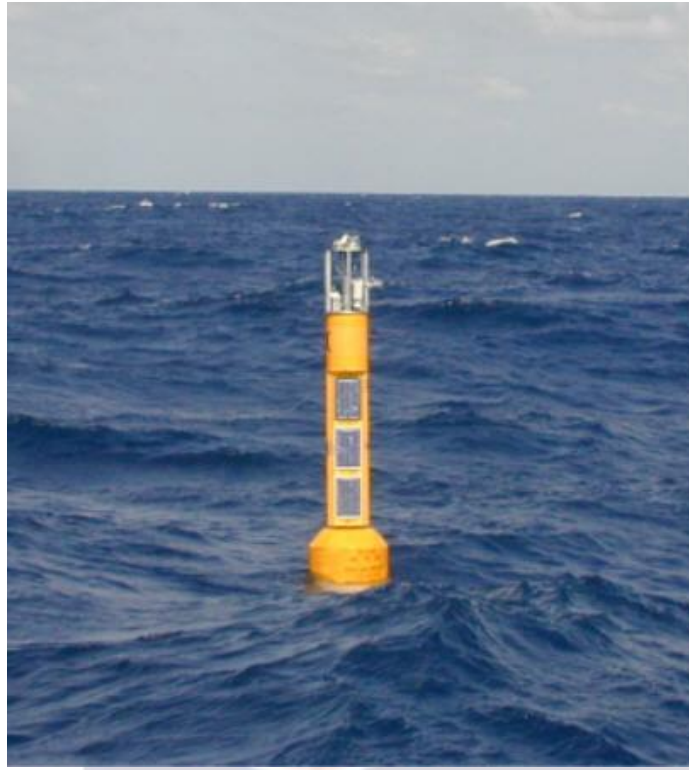
TEXAS AUTOMATED BUOY SYSTEM

TABS F

(TABS) B

https://www.ndbc.noaa.gov/station_page.php?station=42043

Flashing Yellow- 4 Second labeled “B”



GA 189 Mitchell’s Reef Marker

Not Available

Yellow Buoy with sign: “FR-TX-25”

Flashing Yellow 6 seconds

https://www.ndbc.noaa.gov/station_page.php?station=42050

Flashing Yellow 4 Second labeled “F”

Note: There is a Quick Flashing Red light ~1nm to WSW with a horn.



High Island 179A KXIH

Not Available

https://www.ndbc.noaa.gov/station_page.php?station=kxih