



SAILING INSTRUCTIONS

Rules	The regatta will be governed by the rules as defined in the current Racing Rules of Sailing (RRS) for 2017-2020 and these Sailing Instructions.						
Entry	See the NOR & Regatta Network (registration).						
Official Notices	Notices to competitors will be posted on the notice board located on the East window of the WRSC clubhouse.						
Changes to SI's	Any shore side change in the sailing instructions will be posted on the official notice board before 0900 on the day it will take effect, except that any change to the schedule of races will be posted by the end of protest time on the day before it will take place.						
Schedule of Races	<table><tr><td>Saturday</td><td>1100 First signal</td></tr><tr><td>Sunday</td><td>1030 First signal</td></tr><tr><td></td><td>1430 No start given</td></tr></table>	Saturday	1100 First signal	Sunday	1030 First signal		1430 No start given
Saturday	1100 First signal						
Sunday	1030 First signal						
	1430 No start given						
Class Flags	The class flag will show the class insignia or as described at the Skipper's Meeting.						
Time Limit	There will be a race time limit of 1 hour for the first boat to finish. Boats must finish within 30 minutes of the first place boat of their fleet, if they finish after they will be scored DNF. This changes RRS 35.						
Penalties & Protests	<p>The Penalties should follow Rule 44 of RRS. <i>Rules 44.1 and 44.2 are changed for multihull boats only, so that only one turn, including one tack and one gybe, is required.</i></p> <p>Protests and requests for redress shall be delivered to the Race Committee within one hour after the race committee signal boat docks. Competitors intending to file a protest or request for redress shall advise the Race Committee as soon as practicable after finishing. The protest time limit and a list of protests and requests received will be posted on the notice board. Hearings will be held as soon as possible after racing each day in the clubhouse boardroom.</p>						
Courses	Courses are listed in Appendix A.						

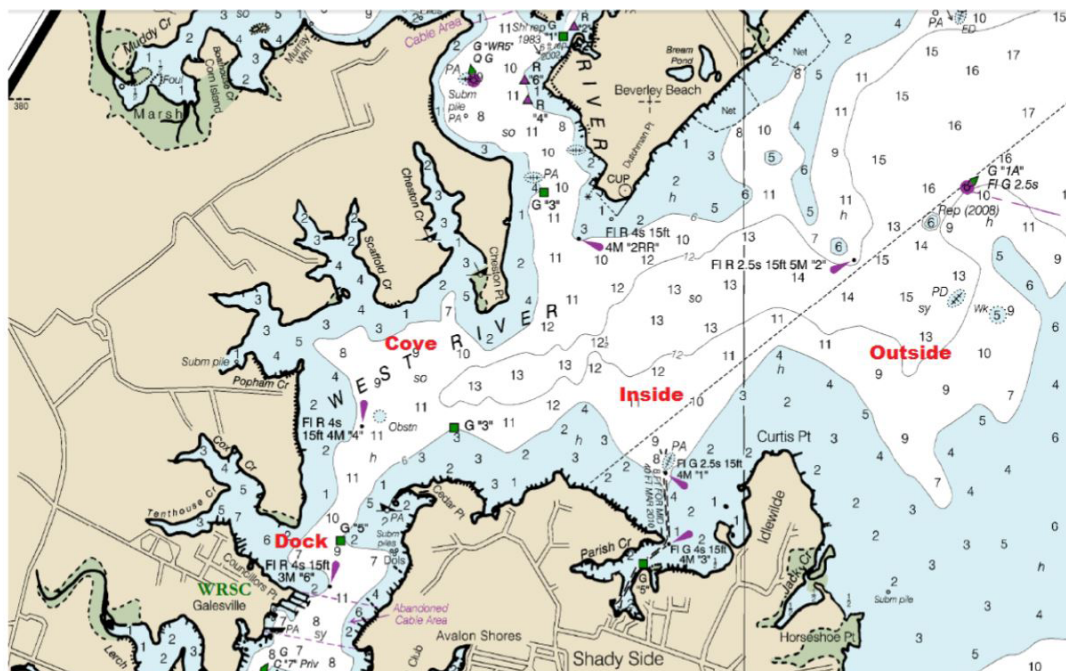


SAILING INSTRUCTIONS

Venues

The regatta will be held at the West River Sailing Club in Galesville, MD.

The RC Shall select the venue for each race on race day. WRSC typically races in the areas noted in red below.



Radio Communications

A boat shall neither make radio transmissions while racing nor receive radio communications not available to all boats. This restriction also applies to mobile telephones, but does not apply to any communication received or transmitted to request or render assistance to a vessel in distress.

Scoring

One (1) race is required to be completed to constitute a series. When fewer than 5 races have been completed, a boat's series score shall be the total of her race scores. When 5 or more races have been completed, a boat's series score shall be the total of her race scores excluding her worst score.

Support Boats

Support boats shall be marked with the letters WRSC or as described at the Competitor's meeting.

Check-In

Before starting their first race of the day, all competitors shall sail astern the starting boat, give their sail number and be acknowledged by the RC. Any competitor who leaves the race area before the completion of racing shall notify the RC before leaving the race area.



SAILING INSTRUCTIONS

Prizes

For each class, prizes will be given to the first place finisher in classes with 3 or fewer entries, the first two finishers in classes with 6 or fewer entries and the first 3 finishers in classes with 7 or more entries.

The Billy Heintz memorial Trophy will be awarded to the first place competitor of the WRSC class with the largest number of entries in the Regatta.

Disclaimer of Liability

Competitors participate in the regatta entirely at their own risk. See rule 4, Decision to Race. The organizing authority will not accept any liability for material damage or personal injury or death sustained in conjunction with or prior to, during, or after the regatta.

APPENDIX A

Course Location will be chosen by the RC each day.

Start and Finish: The start and finish lines will be to leeward of the leeward turning mark. The start line will be between the orange flag on the signal boat and a red ball laid to its port side. The finish line will be between a blue flag and a red ball laid to the starboard side of the signal boat. In the event the course is shortened, the finish line will be between the "S" flag and a nearby mark of the course.

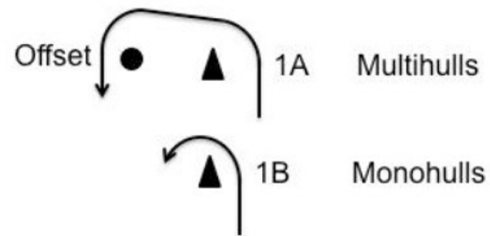
Course Designation: Courses will be Windward-Leeward or Triangle-Windward-Leeward designated by a letter "W" or "O" (respectively) posted on the starboard side of the signal boat. The number of legs will be designated after the letter (i.e. "W4" indicates windward, leeward, windward, then finish to leeward). The course will be posted prior to the Preparatory signal

Course Diagram on the next page.

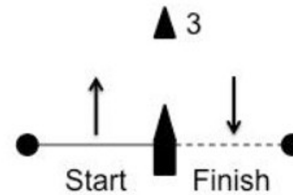


SAILING INSTRUCTIONS

APPENDIX A CONT.



▲ 2



Courses For Monohulls:

"W2": Start-1B-Finish
"W4": Start-1B-3-1B-Finish
"O5": Start-1B-2-3-1B-Finish

Courses For Multihulls:

"W2": Start-1A-Offset-Finish
"W4": Start-1A-Offset-3-1A-Offset-Finish
"W6": Start-1A-Offset-3-1A-Offset-3-1A-Offset-Finish