

**2018 J/Fest Southwest Regatta – October 13 and 14, 2018**  
***With the support of our generous race sponsors including***



**2018 J/Fest Southwest Regatta**  
**October 13 & 14, 2018**  
**Organizing Authority: Bay Access**  
**Hosted by Lakewood Yacht Club**

**Sailing Instructions**

## 1. RULES

- 1.1 The regatta will be governed by the *rules* as defined in *The Racing Rules of Sailing*.
- 1.2 The penalty for violating RRS 31 by touching an anchored race committee vessel shall be to retire. This modifies RRS 44.1 and 64.1(c).
- 1.3 The penalty for violating a rule of Part 2 with the result that another boat touches an anchored race committee vessel shall be for the offending boat to retire. This modifies RRS 44.1 and 64.1(c).
- 1.4 Racing Rules shall be changed as follows:
  - SI 1.2 and SI 1.3 change RRS 44.1 and 64.1(c)
  - SI 8.4 changes RRS 33
  - SI 11.4 changes RRS A4 and A5
  - SI 14.3 changes RRS 44.1
  - SI 14.4 changes RRS 44.3 and T1
  - SI 15.2 changes RRS 35, A4 and A5
  - SI 16.5 changes RRS 62.2 and 66
  - SI 17.2 changes RRS A2
  - SI 27.3 changes RRS 62

1.5

## 2. NOTICES TO COMPETITORS

- 2.1 Notices to competitors will be posted on the official notice board located in the vicinity of the west end of the pool at Lakewood Yacht Club.

## 3. CHANGES TO SAILING INSTRUCTIONS

- 3.1 Any change to the sailing instructions will be posted before 0830 hours on the day it will take effect, except that any change to the schedule of races will be posted by 2000 hours on the day before it will take effect.

## 4. SIGNALS MADE ASHORE

- 4.1 Signals made ashore will be displayed on the yardarm at Lakewood Yacht Club near the pool.
- 4.2 When "AP" is displayed ashore, '1 minute' is replaced by 'not less than 60 minutes' in the race signal AP.

## 5. SCHEDULE OF RACES

- 5.1 The scheduled time of the first warning signal for the first race each day is 1000 hours.
- 5.2 On the last scheduled day of racing no warning signal will be made after 1300 hours.

- 5.3 The race committee intends to run multiple races. The number of races conducted is at the sole discretion of the race committee except for the J/24 Class. The J/24 Class will have a maximum of six races.
- 5.4 Flag “A” (ALPHA) displayed with no sound whilst boats are finishing means “no more racing today”

## 6. CLASSES and LINE ASSIGNMENTS

- 6.1 Class line assignments and class flags are identified and designated in Attachment 1.

## 7. RACING AREAS

- 7.1 The general race area will be between Clear Lake Channel Marker No. 2, Red Bluff, the Houston Ship Channel, and San Leon.
- 7.2 The Red Circle starting line will be approximately ½ - 1 mile northeast of Clear Lake Channel Marker #1.
- 7.3 The Blue Circle starting line will be approximately 1 - 1½ miles south/southeast of Clear Lake Channel Marker #1.

## 8. THE COURSES

- 8.1 RED CIRCLE: The diagrams in Attachment 2 show the courses, including the approximate angles between legs; the order in which marks are to be passed; and the side on which each mark is to be left.
- 8.2 BLUE CIRCLE Windward/Leeward courses: The diagrams in Attachment 3 show the courses, including the approximate angles between legs; the order in which each mark is to be left.
- 8.3 BLUE CIRCLE Distance courses: Classes will sail a course selected from the “Distance Courses” listed in Attachment 4.
- A. Mark 1 for the Distance courses will be placed between 1.5 and 2 NM to windward (+/-20 degrees) of the signal vessel. Depending on the wind direction, the fleet(s) will round this mark to port or starboard, and then continue to mark #5. On return from mark #5, the fleet will again round mark 1 and sail the final leg to finish.
- B. The Race Committee will record the positions of the signal vessel and Mark #1 for use in computing the total race course distance. This total distance will be posted on the official notice board after racing is completed for the day.
- 8.4 For Distance Courses only, the legs of the course will not be changed after the preparatory signal. This changes RRS 33.
- 8.5 No later than the warning signal, the race committee will display a number pennant indicating the course to be sailed.

## 9. MARKS

### 9.1 Red Circle ( J/22, J/24 & J/70):

	Original Marks	New Marks
Mark 1	Yellow Inflatable 8' tet	Orange Inflatable 8' tet
Mark 1A	Orange buoy	Orange buoy
GATE (2P/2S)	Yellow Inflatable 4' tet	Yellow Inflatable 4' tet
Start	RC vessel or an Orange buoy	RC vessel or an Orange buoy
Finish	RC vessel or an Orange buoy	RC vessel or an Orange buoy

### 9.2 Blue Circle W/L (J/105, J/PHRF):

	Original Marks	New Marks
Mark 1	Orange Inflatable 8' tet	Yellow Inflatable 8' tet
Mark 1A	Orange buoy	Orange buoy
GATE (2P/2S)	Orange Inflatable 4' tet	Orange Inflatable 4' tet
Start	RC vessel or Orange buoy	RC vessel or Orange buoy
Finish	RC vessel or Orange buoy	RC vessel or Orange buoy

### 9.3 Blue Circle (J/Distance):

Name	Description	Approx Lat.	Approx Lon.
1	White tetrahedron		
South Cut #5	South Cut #5	29°32.410 N	094°54.655 W
Low Range	Low Range	29°35.780 N	094°56.940 W
GBCA H	H Mark	29°33.255 N	094°56.542 W

## 10. AREAS THAT ARE OBSTRUCTIONS

10.1 The following areas are designated as obstructions: Houston Ship Channel

### 11. THE START

11.1 Races will be started by using RRS 26.

11.2 The starting line will be between the staffs displaying an **orange** flag on the starboard end signal vessel and the orange flag on the port end starting mark vessel. In the event that the port end mark vessel is not on station, it will be replaced by an orange buoy. The course side of the orange buoy will define the line.

11.3 Boats whose warning signal has not been made shall avoid the starting area during the starting sequences for other races.

11.4 A boat that does not start within 5 minutes after her starting signal will be scored Did Not Start (DNS) without a hearing. This changes RRS A4 & A5.

## 12. CHANGE OF THE NEXT LEG OF THE COURSE

- 12.1 To change the next leg of the course, the race committee will lay a new mark (or move the finishing line) and remove the original mark as soon as practicable. When in a subsequent change a new mark is replaced, it will be replaced by an original mark.

## 13. THE FINISH

- 13.1 The finishing line will be between a staff displaying a **blue** flag on a race committee vessel and a nearby orange mark.

## 14. PENALTY SYSTEM

- 14.1 RRS Appendix V Alternative Penalties will apply to all classes except J/24 class as modified by the Addendum to the SI's for the J/24 class.
- 14.2 RRS Appendix T Arbitration will apply.
- 14.3 RRS 44.1 is changed to read:

**A boat may take a One-Turn Penalty when she may have broken one or more rules of Part 2 or RRS 31 in an incident while racing. However, when she may have broken one or more rules of Part 2 while in the zone around a mark other than a starting mark, her penalty shall be a Two-Turns Penalty.**

**However, (a) when a boat may have broken a rule of Part 2 and rule 31 in the same incident she need not take the penalty for breaking rule 31; (b) if the boat caused injury or serious damage or, despite taking a penalty, gained a significant advantage in the race or series by her breach her penalty shall be to retire.**

**A boat that has done penalty turns shall complete an acknowledgement form at the protest committee desk within the protest time limit.**

- 14.4 Alternatively, a boat may accept a Scoring Penalty as described in RRS 44.3. The Scoring Penalty shall be 20% of the boats entered unless the incident occurs within the zone of any mark, in which case the Scoring Penalty shall be 30% of the boats entered. This changes RRS 44.3 and T1. RRS 44.1 (a) and (b) will apply.

## 15. TIME LIMIT

- 15.1 Any race in which no boat rounds the first windward mark within 35 minutes after its start will be abandoned.
- 15.2 For One Design classes, boats failing to finish within thirty (30) minutes after the first boat sails the course and finishes will be scored Did Not Finish without a hearing. This changes RRS 35, A4 and A5.

## 16. PROTESTS AND REQUESTS FOR REDRESS

- 16.1 Intent to protest shall be signaled in accordance with the RRS 61.1.
- 16.2 A boat intending to protest another boat shall notify the race committee immediately after

finishing and before communicating with coaches or spectators. Boats shall first sail to the non-course side of the finish vessel and report to the finish vessel. Boats that do not finish shall report their intent to protest to any race committee vessel at the first possible opportunity. This adds to RRS 61.1(a).

- 16.3 Protests, Scoring Inquiries and Requests for Redress shall be written on forms available in the foyer of the LYC Clubhouse Office. For each LINE, the protest time limit is sixty-minutes (60) after the race committee signal vessel returns to the Lakewood Inner Harbor. This time will be noted by one long blast of the horn and will be posted on the official notice board. In the event the race committee signal vessel does not return to the Inner Harbor, the protest time limit will be one hour after notice of that fact is posted on the official notice board.
- 16.4 The times and locations of the protest hearings, along with the names of the boats involved will be posted on the official notice board within (30) minutes of the expiration of the protest time limit.
- 16.5 On the last day of racing a request to reopen a hearing must be delivered to the protest desk within 30 minutes of the parties to the protest receiving the protest committee's decision (oral or written). This changes RRS 62.2 and 66.
- 16.6 Scoring inquiries shall be filed by 0730 hrs on the day following the race in question or 30 mins after the posting of the preliminary results for that race, whichever is later, except for the last day of racing. For races held the last day of racing, scoring inquires must be filed within the protest time limit or 30 minutes after the provisional final results are posted, whichever is later.
- 16.7 For the purpose of meeting obligations under US Sailing prescriptions concerning redress, notification of a redress hearing shall be by posting on the official notice board for thirty minutes. The requirement for written requests for attendance of the hearing will be satisfied by a sign-up sheet at the official protest table. No more than one person per boat may attend. No request for reopening a hearing will be accepted after 6 PM Sunday, 10/14/2017.

## **17. SCORING**

- 17.1 One race is required to be completed to constitute a regatta. However, for the J/24 class three races are required to be completed to for the regatta to be scored in the Texas Circuit.
- 17.2 The Low Point Scoring System of Appendix A will apply. Each boat's series score shall be the sum of her race scores. No races will be excluded. This modifies RRS A2.

## **18. SAFETY REGULATIONS**

- 18.1 Check-In: Before the warning signal of her first race each day, each boat shall sail on starboard tack past the stern of the race committee signal vessel and hail her sail number or bow number until acknowledged by the race committee by repeating the boat's sail number or bow number. All souls onboard shall be wearing or displaying an USCG approved life jacket during check-in.
- 18.2 A boat that retires from a race, leaves the course area or returns to the course area between races shall notify the race committee as soon as possible.

## **19. REPLACEMENT OF CREW OR EQUIPMENT**

- 19.1 Substitution of competitors will not be allowed without prior written approval of the race

committee.

- 19.2 Substitution of damaged or lost equipment will not be allowed without prior written approval of the race committee. Requests for substitution shall be made to the committee at the first reasonable opportunity.

## **20. EQUIPMENT AND MEASUREMENT CHECKS**

- 20.1 On the water, a boat can be instructed by a member of race committee or the technical committee to proceed immediately to a designated area for inspection. Ashore, equipment may be measured or inspected.

## **21. EVENT ADVERTISING**

- 21.1 If supplied by the organizing authority, boats shall display event advertising.

## **22. OFFICIAL BOATS**

- 22.1 Race committee vessels will display a blue "RC" flag.

## **23. SUPPORT VESSELS**

- 23.1 Team leaders, coaches, and other support persons shall stay outside areas where boats are racing from the time of the preparatory signal for the first class to start until all boats have finished or retired, or the race committee signals a postponement, general recall, or abandonment.

## **24. TRASH DISPOSAL**

- 24.1 Trash may be placed aboard support or official boats.

## **25. HAUL-OUT RESTRICTIONS**

- 25.1 Boats shall not be hauled out during the regatta except with and according to the terms of prior written permission of the race committee. However, in the case of an emergency, permission may be granted retroactively.

## **26. DIVING EQUIPMENT AND PLASTIC POOLS**

- 26.1 Underwater breathing apparatus and plastic pools or their equivalent shall not be used around boats between the preparatory signal of the first race of the regatta and the end of the regatta.

## **27. RADIO COMMUNICATION**

- 27.1 Except in an emergency, a boat that is racing shall not make voice or data transmissions and not receive voice or data communication that is not available to all boats.
- 27.2 The race committee will communicate with competitors on the following VHF channels:
- Red Circle – VHF channel 68
  - Blue Circle – VHF channel 72

27.3 The race committee intends to use VHF radio to broadcast courtesy information to competitors, including OCS hails and other race information. Failure to broadcast or failure of a boat to hear broadcasts shall not be grounds for granting redress. This changes RRS 62.

## **28. PRIZES**

28.1 Awards will be presented to the top third of each class, up to five. Additional prizes may be awarded to participants by sponsors.

## **29. DISCLAIMER OF LIABILITY**

29.1 Competitors participate in the regatta entirely at their own risk. See RRS 4, Decision to Race. The organizing authority will not accept any liability for material damage or personal injury or death sustained in conjunction with or prior to, during, or after the regatta.

## **30. INSURANCE**

30.1 Each participating boat shall be insured with valid third-party liability insurance with minimum coverage of \$300,000 per event or the equivalent.

## **31. ADDENDUM TO SAILING INSTRUCTIONS FOR J/24 CLASS**

31.1 The SI Addendum for the J/24 Class will apply and is available via the link below:

[https://www.regattanetwork.com/clubmgmt/regatta\\_uploads/17540/J24AddendumSI2018.pdf](https://www.regattanetwork.com/clubmgmt/regatta_uploads/17540/J24AddendumSI2018.pdf)

## **32. BOW NUMBERS / EVENT IDENTIFICATION STICKERS**

32.1 Boats shall display bow numbers and event bow stickers during the event as provided by the OA. They shall be attached to both sides of the boat's hull at all times while racing. Bow numbers and event bow stickers will be attached by the OA on every boat. It is the responsibility of the crew to ensure the numbers and stickers remain on the boat and obtain replacements as necessary.

## **33. RACE OFFICIALS**

### Red Circle

PRO- David Comeaux

832-993-5933

[comeauxvi@earthlink.net](mailto:comeauxvi@earthlink.net)

### Blue Circle

PRO- Dwight Bengtson

832-457-5154

[Dwight.bengtson@comcast.net](mailto:Dwight.bengtson@comcast.net)

### Protest committee chair

John Butler

281-794-9404

[ljohnbutler@sbcglobal.net](mailto:ljohnbutler@sbcglobal.net)



Event chair

J.D Hill

469-583-9218

[jdhill@rejex.com](mailto:jdhill@rejex.com)

Representing the OA during the regatta:

1 Brian Irvine



## Attachment 1

LINE ASSIGNMENTS, CLASS FLAG and STARTING SEQUENCE FOR THE  
FIRST RACE OF EACH DAY

**The starting order may change for subsequent races**

### **RED CIRCLE – “Small Boat” Windward/Leeward**

**Signal Boat: “At Last”**

#### **CLASSES**

J/70

J/24

J/22

#### **FLAG**

J/70 Class Flag (white)

J/24 Class Flag (blue)

J/22 Class Flag (Lt green)

### **BLUE CIRCLE – “Large Boat” Windward/Leeward, Distance**

**Signal Boat: Stamas**

#### **CLASSES**

J/Distance

J/105

J/PHRF

#### **FLAG**

Green

J/105 Class Flag (white)

Purple

# Attachment 2 – Red Circle W/L Courses



Course 2: Start-1-1a-Finish



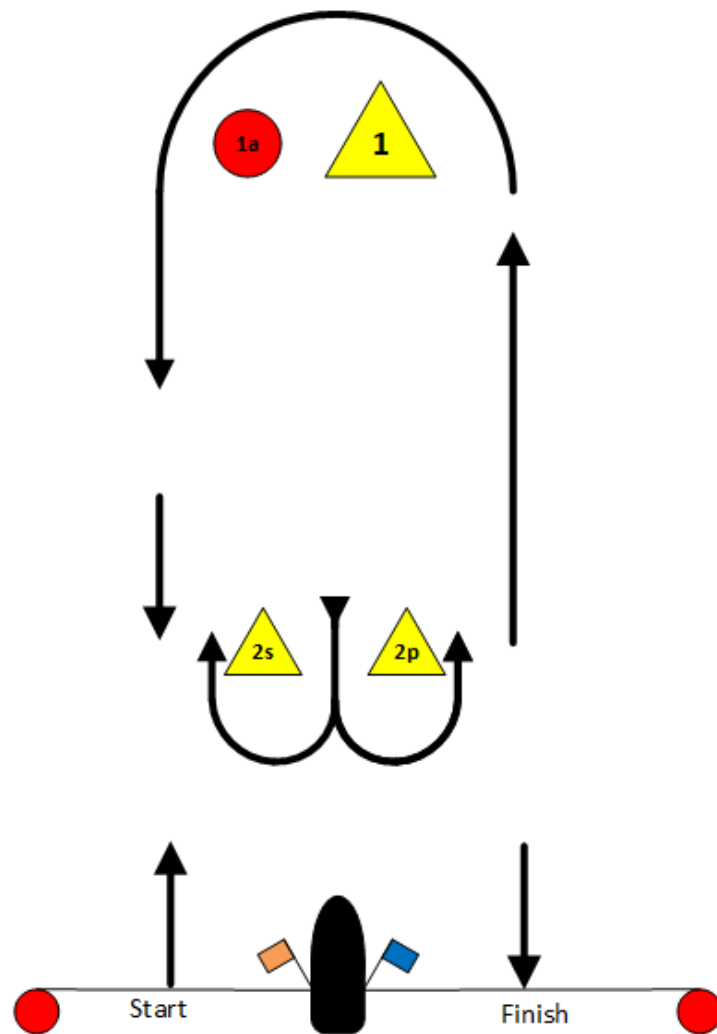
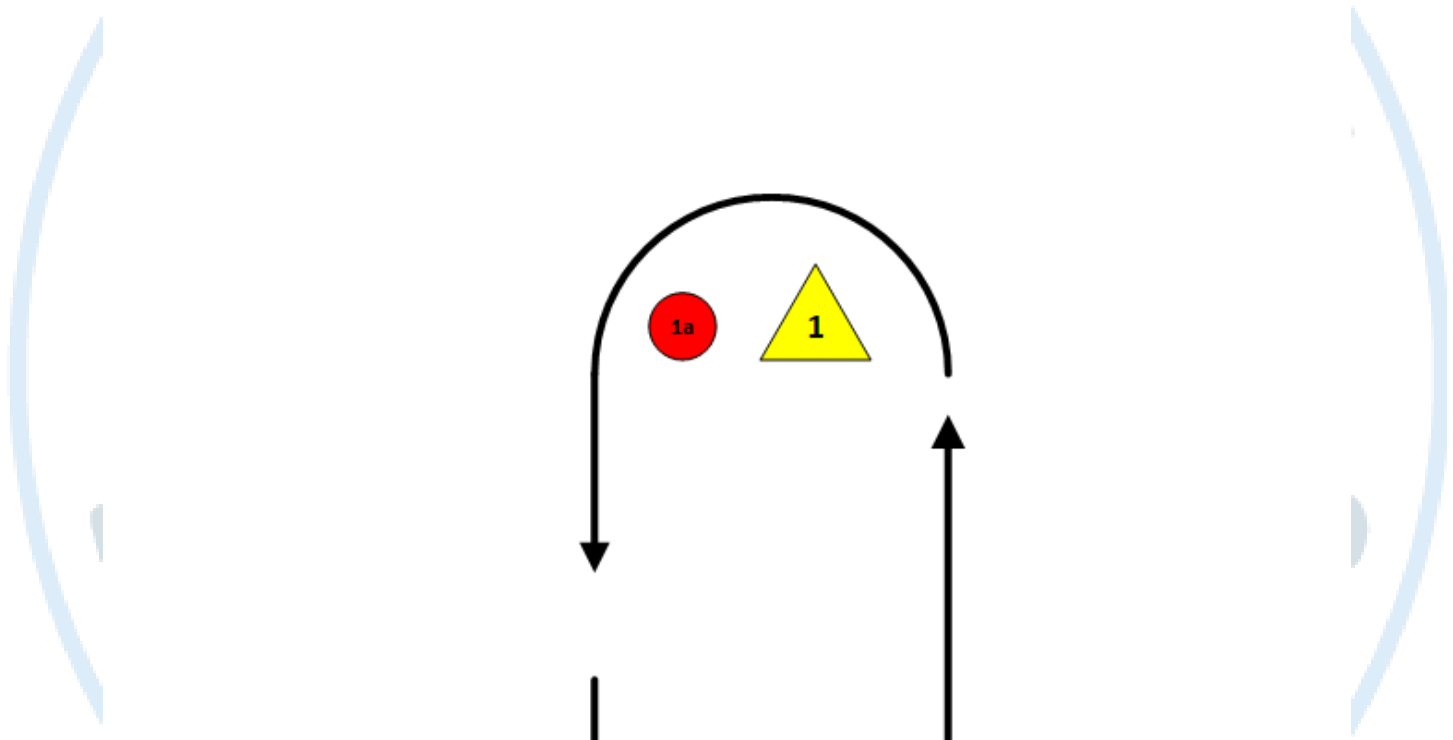
Course 4: Start-1-1a-2p(s)-1-1a-Finish



Course 6: Start-1-1a-2p(s)-1-1a-2p(s)-1-1a-Finish



Change mark Color



# Attachment 2 – Red Circle W/L Courses



Course 3: Start-1-1a-2p(s)-Finish



Course 5: Start-1-1a-2p(s)-1-1a-2p(s)-Finish

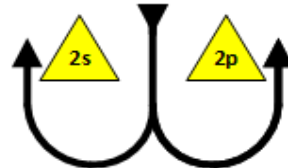
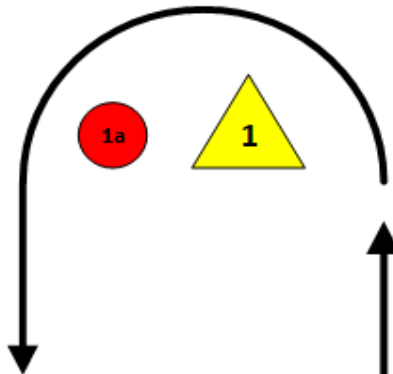
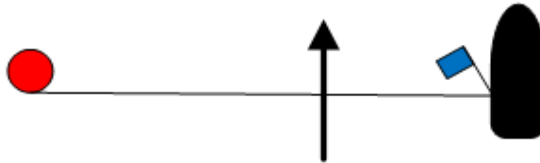


Change mark Color



Course 7: Start-1-1a-2p(s)-1-1a-2p(s)-1-1a-2p(s)-Finish

Finish



Start

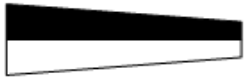
# Attachment 3 – Blue Circle W/L Courses



Course 2: Start-1-1a-Finish



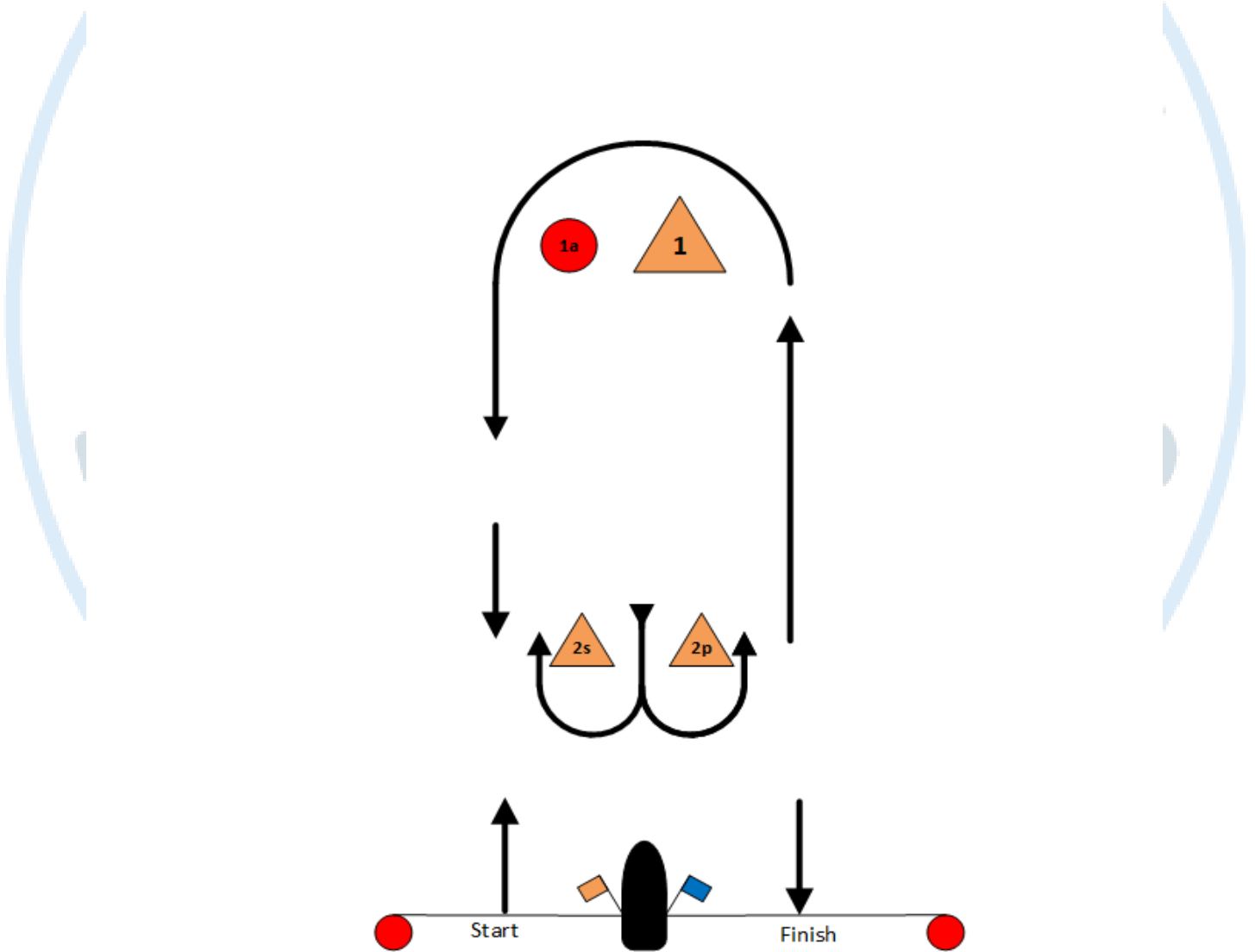
Course 4: Start-1-1a-2p(s)-1-1a-Finish



Course 6: Start-1-1a-2p(s)-1-1a-2p(s)-1-1a-Finish



Change mark Color



# Attachment 3 – Blue Circle W/L Courses



Course 3: Start-1-1a-2p(s)-Finish



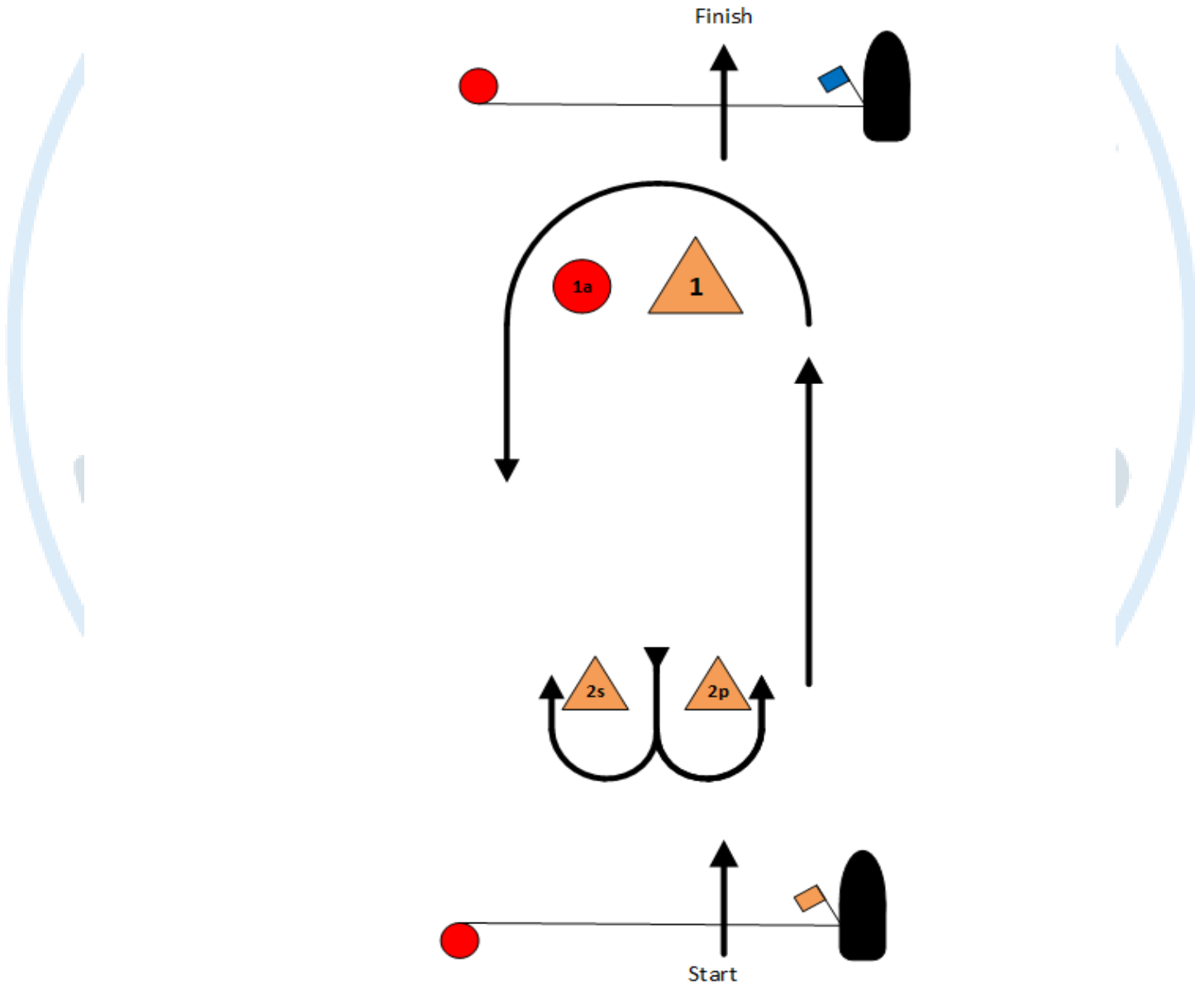
Course 5: Start-1-1a-2p(s)-1-1a-2p(s)-Finish



Change mark Color



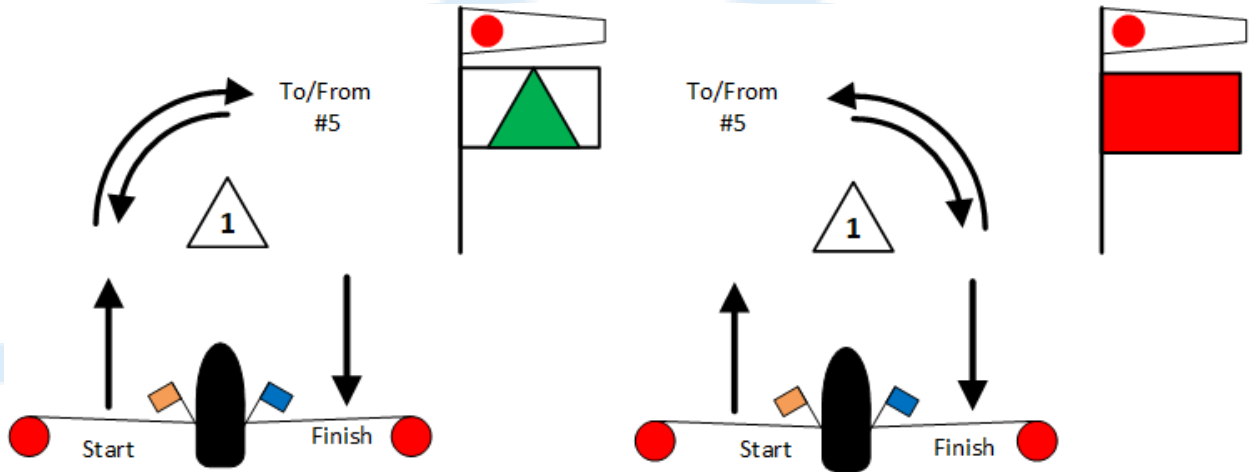
Course 7: Start-1-1a-2p(s)-1-1a-2p(s)-1-1a-2p(s)-Finish



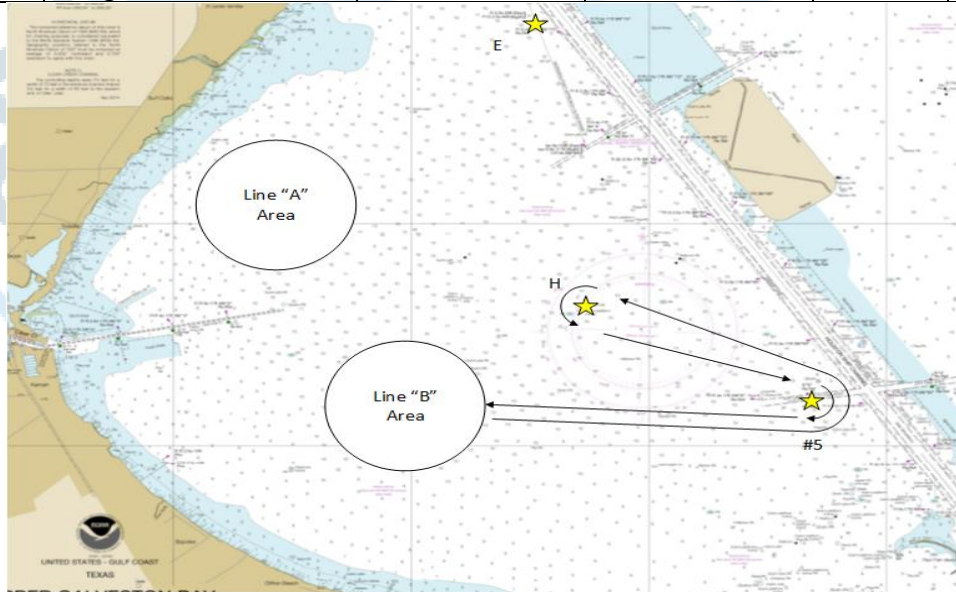
# Attachment 4 – Blue Circle Distance Courses

## Course 1-Green

## Course 1-Red



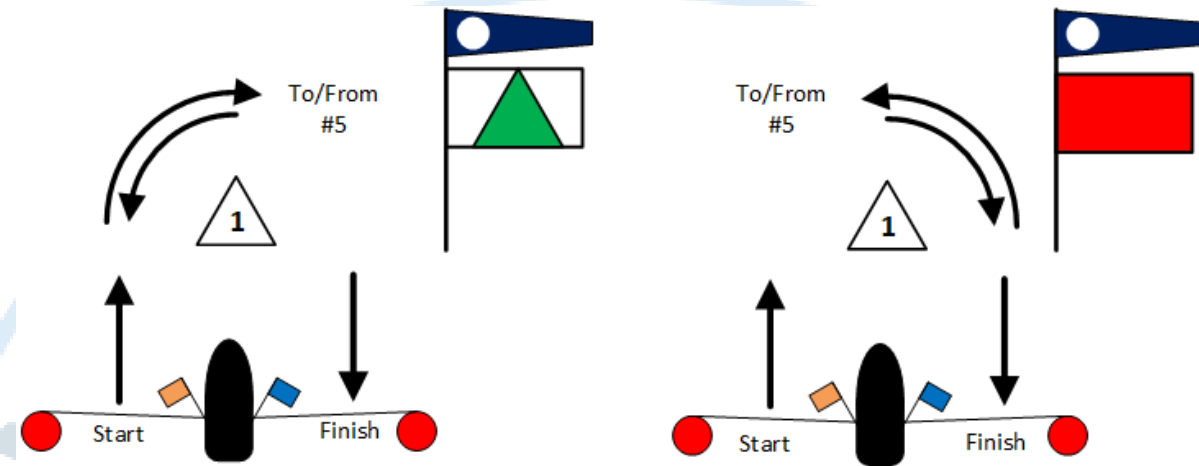
Name	Description	Approximate Lat	Approximate Lon	Approx. BRG	Dst. (Nm)
Start	Signal Boat to Stbd.				
1	White tet				1-1.5
South Cut #5	South Cut #5 to Port	29°32.410 N	094°54.655 W		
GB H	H Mark to Port	29°33.255 N	094°56.542 W	300°	1.85
South Cut #5	South Cut #5 to Stbd.	29°32.410 N	094°54.655 W	120°	1.85
1	White tet (Opposite)				
Finish	Signal Boat to Stbd				1-1.5



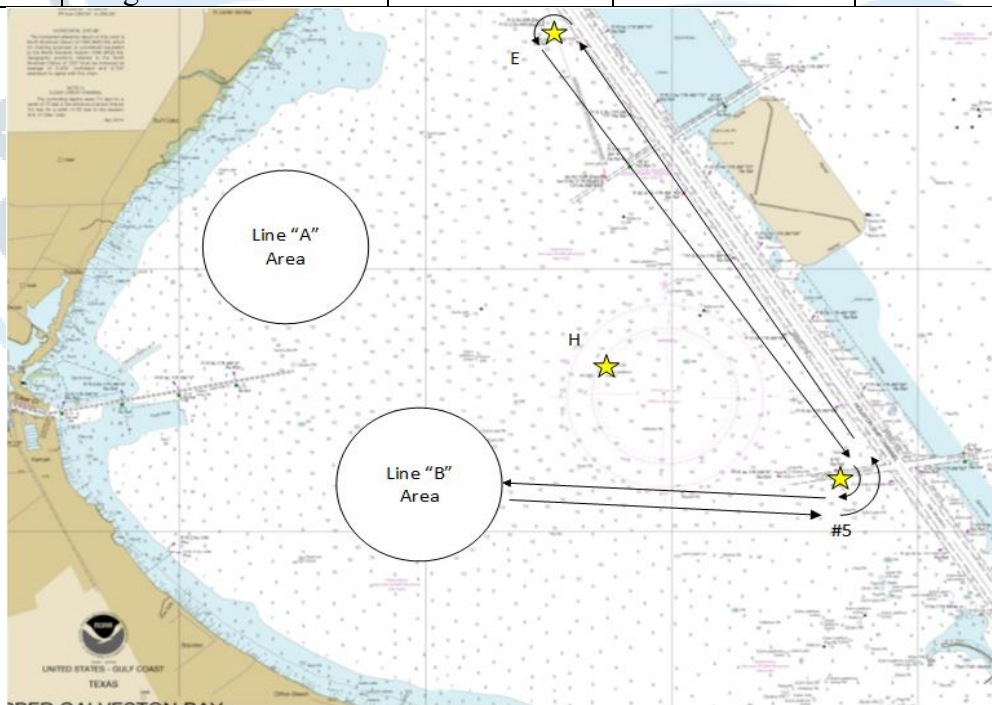
# Attachment 4 – Blue Circle Distance Courses

## Course 2-Green

## Course 2-Red



Name	Description	Approximate Lat	Approximate Lon	Approx. BRG	Dst. (Nm)
Start	Signal Boat to Stbd.				
1	White tetrahedron				
South Cut #5	South Cut #5 to Port	29°32.410 N	094°54.655 W		
Low Range	Low Range to Port	29°35.780 N	094°56.940 W	330°	3.91
South Cut #5	South Cut #5 to Stbd.	29°32.410 N	094°54.655 W	150°	3.91
1	White tet(Opposite)				
Finish	Signal Boat to Stbd.				

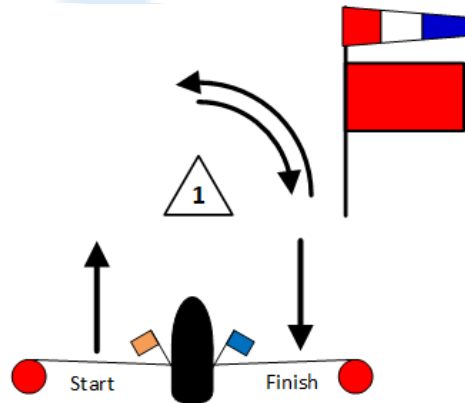
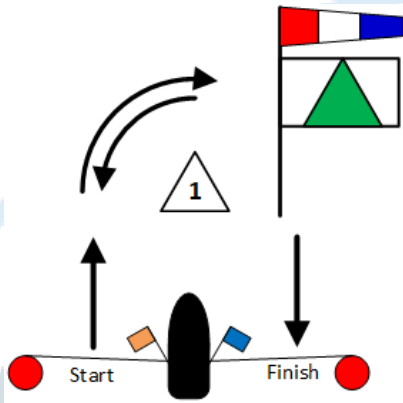




# Attachment 4 – Blue Circle Distance Courses

## Course 3-Green

## Course 3-Red



Name	Description	Approx. Lat	Approx. Lon	Approx. BRG	Dst.(Nm)
Start	Signal Boat to Stbd.				
1	White tetrahedron				1-1.5
South Cut #5	South Cut #5 to Port	29°32.410 N	094°54.655 W	070°	2.53
Low Range	Low Range to Port.	29°35.780 N	094°56.940 W	330°	3.9
GBCA H	H Mark to Port	29°33.255 N	094°56.542 W	175°	2.5
South Cut #5	South Cut #5 to Stbd.	29°32.410 N	094°54.655 W	120°	1.85
1	White tet(Opposite)				
Finish	Signal Boat to Port				1-1.5

