

2018 – 2019 Winter Series

Viper 640 and VX One

With **Regattas** on Dec 15-16 2018, Jan 19-21 2019, Feb 9-10 2019, Mar 15-17 2019

The Organizing Authority is the Sarasota Sailing Squadron



Sailing Instructions

1 RULES

The Regattas will be governed by the *rules* as defined in *The Racing Rules of Sailing* (RRS) and the class rules of the VX One Class Association and the class rules of the Viper Class Association.

2 NOTICES TO COMPETITORS

- 2.1 Notices to competitors will be posted on the regatta notice board located near the Sarasota Sailing Squadron office.
- 2.2 The race committee will use VHF channel **78** to communicate with competitors on the water.

3 CHANGES IN SAILING INSTRUCTIONS

Any changes will be posted before 0800 hours on the day it will take effect, except that any change in the schedule of races will be posted before 2000 hours the day before the change is to take effect.

4 SIGNALS MADE ASHORE

- 4.1 Signals made ashore will be displayed from the Sarasota Sailing Squadron flagpole on the south side of the screened porch.
- 4.2 When flag AP is displayed ashore, “1 minute” is replaced by “not less than 45 minutes” in the race signal.

5 RACING AREA

The racing area will be on Sarasota Bay approximately 1-2 miles north of the Clubhouse, as shown in Attachment I.

6 CLASS FLAG

The class flag will be a white flag with the class insignia.

7 SCHEDULE

7.1 Winter Series Schedule

Regatta	Day	Classes	First Warning
Dec 15-16, 2018	Sat, Dec 15	Viper only	1200
	Sun, Dec 16	Viper only	1000, no warning after 1400
Jan 19-21, 2019	Sat, Jan 19	Viper and VX One	1200
	Sun, Jan 20	Viper and VX One	1000, no warning after 1400 for Vipers
	Mon, Jan 21	VX One only	1000, no warning after 1400
Feb 9-10, 2019	Sat, Feb 9	Viper and VX One	1200
	Sun, Feb 10	Viper and VX One	1000, no warning after 1400
Mar 15-17, 2019	Sat, Mar 15	VX One only	1200
	Sun, Mar 16	VX One only	1000
	Mon, Mar 17	VX One only	1000, no warning after 1400

- 7.2 Up to four races may be run each day.
7.3 A maximum of seven races will be run for a 2-day regatta.
7.4 A maximum of eleven races will be run for a 3-day regatta.

8 MARKS

- 8.1 Windward and leeward marks will be orange tetrahedrons. The offset mark will be a small orange ball.
8.2 The starting and finishing marks will be green tetrahedrons and RC vessels.
8.3 New marks, as provided in SI 12, will be yellow tetrahedrons.

9 THE COURSES

- 9.1 The diagrams and descriptions in Attachment II show the courses, including the approximate angles between legs and the order in which marks are to be passed.
9.2 If only one leeward mark is present it shall be rounded to port.
9.3 The course identifier, approximate magnetic bearing and distance in nautical miles to the first mark will be displayed from the race committee signal vessel prior to the warning signal for each race.

An example is shown below:

4	Four legs, finishing downwind
270	Approximate bearing to windward mark
1.2	Distance (nautical miles) to windward mark

10 THE START

- 10.1. The starting line will be between a staff displaying an orange flag on the race committee signal vessel at the starboard end and either (a) the course side of the starting mark or (b) a staff displaying an orange flag on a vessel at the port end.
10.2 Boats must start within 4 minutes of the starting signal of a race. Boats that do not start within 4 minutes will be scored DNS or DNC for that race, as appropriate.

11 RECALLS

- 11.1 When an individual recall is signaled, the race committee will attempt to hail OCS boats on VHF.
11.2 The timing and order of such hails or the failure of a boat to hear the hail shall not be grounds for redress, changing RRS 62.

12 CHANGE OF THE NEXT LEG OF THE COURSE

To change the next leg, the race committee will lay a new mark, move the finishing line or move the gate and remove the old mark as soon as practicable. When in a subsequent change a new mark is replaced, it will be replaced by an original mark.

13 THE FINISH

13.1 The finishing line will be between a staff displaying an orange flag on a race committee vessel and the course side of the finishing mark.

13.2 Flag A displayed with no sound while boats are finishing means “No more racing today.”

14 TIME LIMITS

14.1 The time limit for the first boat to sail the course and finish is 90 minutes.

14.2 Boats still racing more than 15 minutes after the first boat sails the course and finishes will be scored TLE (Time Limit Expired) without a hearing. The score will be 2 points more than the last boat to finish. This changes RRS 35, A4, and A5.

15 PENALTY SYSTEM

15.1 The first two sentences of rule 44.1 are changed to: “A boat may take a One-Turn Penalty when she may have broken a rule of Part 2 or rule 31 while *racing*. However, when she may have broken a rule of Part 2 while in the *zone* around a *mark* other than a starting *mark*, her penalty shall be a Two-Turns Penalty.”

15.2 Post-Race Penalties (Appendix T1) will apply.

15.3 Arbitration will be offered per Appendix T.

16 PROTESTS AND REQUESTS FOR REDRESS

16.1 Protest forms are available in the Regatta Room. Protests shall be delivered there within the protest time limit which is **45** minutes after the race committee finish boat docks after the last race of the day.

16.2 The race committee will post a list of penalties being assigned by the race committee prior to the end of protest time limit. The deadline for requesting redress based on these scores will be either 30 minutes after posting of the penalty notice or the protest time limit, whichever is later. This changes RRS 62.2.

16.3 Notices will be posted promptly after the receipt of a protest or a request for redress to inform competitors of hearings in which they are parties or named as witnesses. Hearings will be held in the Regatta Room in approximately the order of receipt beginning as soon as possible after their receipt.

16.4 On the last day of each Regatta a request for redress based on a jury decision shall be delivered no later than 30 minutes after the decision was posted, changing RRS 62.2.

17 SAFETY

17.1 Prior to the warning signal for the first race of each day in which it intends to compete, each boat is requested to check in by sailing by the race committee signal boat and hailing its sail number.

17.2 A boat retiring from a race or leaving the racing area early shall promptly notify the race committee either by hail, over VHF, or by telephone to the Sarasota Sailing Squadron office: 941-388-2355.

18 RADIO COMMUNICATION

A boat shall neither make nor receive radio, phone or other data transmissions while racing not available to all boats, except in an emergency

19 SCORING

19.1 For each Regatta:

19.1.1 If 5 or fewer races are completed, a boat’s Regatta score will be the total of her race scores. If 6 or more races are completed, a boat’s Regatta score will be the total of her scores excluding her worst score.

19.1.2 One completed race is necessary to constitute a Regatta.

19.2 Winter Series scoring for **Viper 640**:

19.2.1 For the Vipers 640 series scoring purposes, any boat that competes in at least one of the series events will also be scored in the entire series. A boats series score will be her total score, including all races not sailed in the series, excluding her worst 30% (rounded to the next higher whole number) of race scores.

19.3 Winter Series scoring for **VX One**:

19.3.1 To qualify for inclusion in the final series results a boat shall compete in (i.e., come to the starting area for) at least 62 percent of the races completed.

19.3.2 Races scored:

Define 'N' to be the number of boats that compete in a particular race. Each boat finishing that race and not thereafter retiring or being disqualified will be scored as follows:

<u>Finishing place</u>	<u>Score</u>
First	N
Second	N-1
Third	N-2
Fourth	N-3

Each place thereafter Subtract 1 point

All other boats that compete in that race, including any that finish and thereafter retire or are disqualified, will score 0 points. Boats that do not compete in that race (DNC) will not be scored.

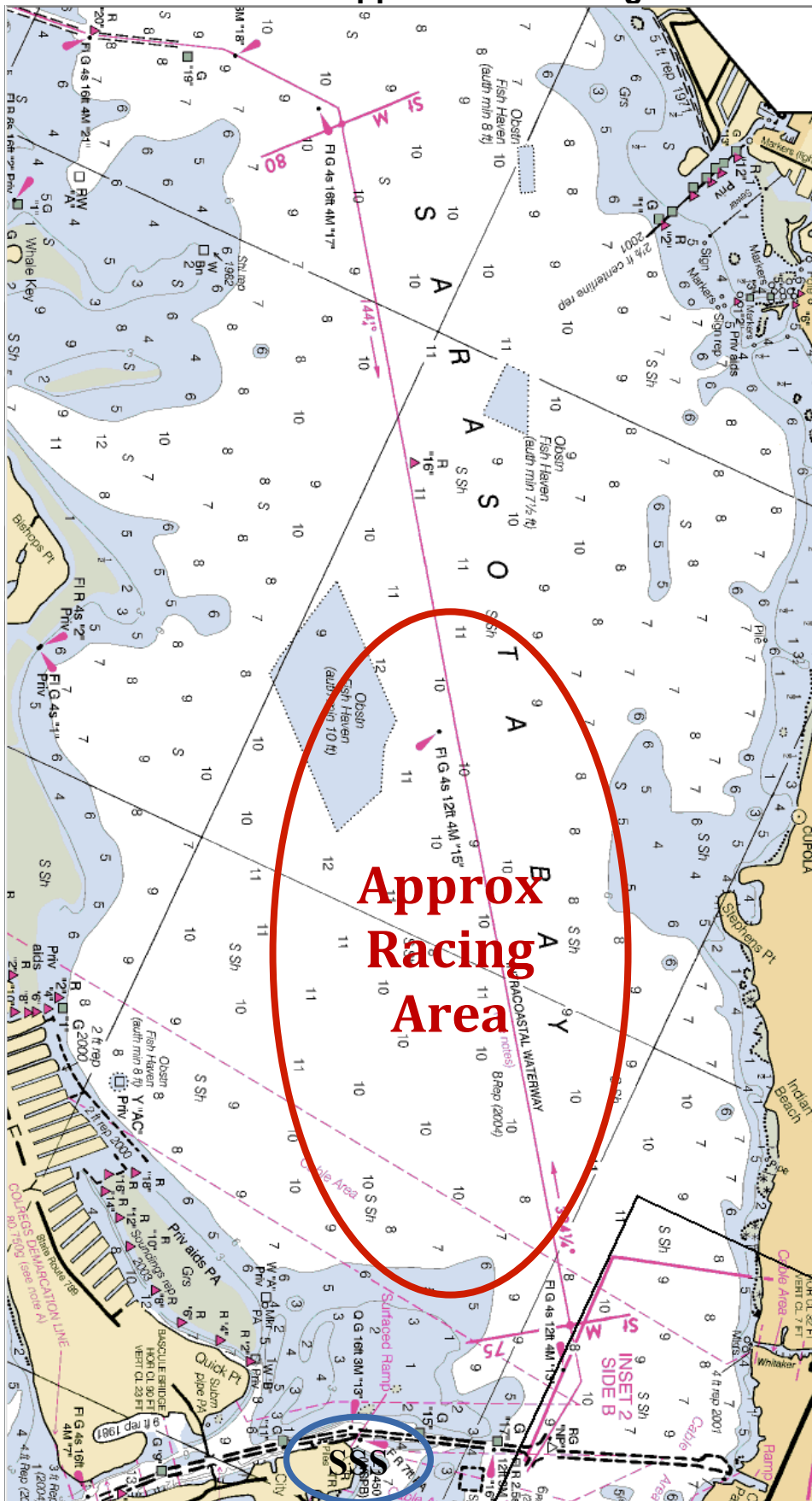
19.3.3 Series Scores

- The series score for each boat will be a percentage calculated as follows: divide the sum of her race scores by the sum of the points she would have scored if she had placed first in every race in which she competed; multiply the result by 100. The qualified boat with the highest series score is the winner, and others are ranked accordingly.
- When one or more race scores are to be excluded, add: "Exclude her_worst score(s). An excluded race counts as a race to qualify a boat for a series score, but not as one of her scored races."

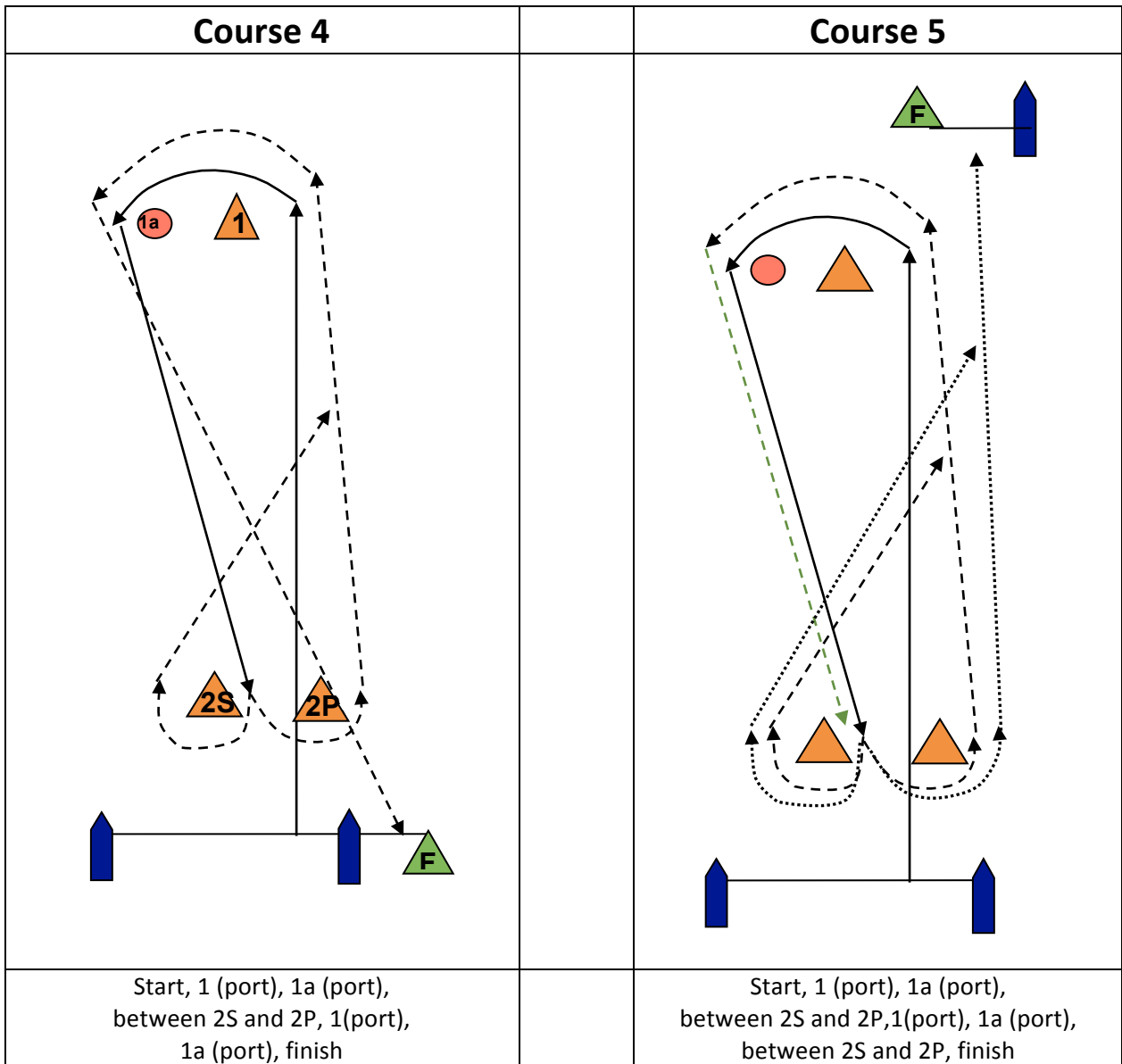
19.3.4 Ties and Other Rules

- Race ties will be handled using rule A7.
- Series ties will be broken using rule A8.1. Rules A1, A3, A5, A6, A10 and A11 also apply.

Attachment 1 – Approximate Racing Area



Attachment II – Sample Course Diagrams



Other possible courses:

Course 3: Start - 1 - 1a - Gate – Finish (Upwind)

Course 6: Start - 1 - 1a - Gate - 1 - 1a - Gate- 1 - 1a – Finish (Downwind)

Course 7: Start – 1 – 1a – Gate – 1 – 1a – Gate- 1 – 1a – Gate – Finish (Upwind)