



## 2018 S'Ale Fest Regatta

Oct 6/7, 2018  
Anacortes Yacht Club  
Anacortes, Washington

# SAILING INSTRUCTIONS

### 1. RULES

- 1.1. The regatta will be governed by the rules as defined in *The Racing Rules of Sailing*.
- 1.2. The US Sailing Prescriptions to rules 63.2 and 63.4 are deleted.
- 1.3. Any rules of the individual Class Associations (to include PHRF-NW) of each participating class and the PIYA "Nearshore" requirements shall apply. [DP]

### 2. NOTICES TO COMPETITORS

- 2.1. Notices to competitors will be posted on the official notice board located on the ground floor at the west entrance of the Anacortes Yacht Club (AYC).
- 2.2. A competitor meeting will be held at the AYC at 1930 on Friday, October 5. A representative from each competing boat shall attend. [DP]
- 2.3. The race committee will utilize VHF channel 72 for communications. Failure to do so, the failure to hear the communication, or any other issues regarding the communication shall not constitute grounds for redress. This changes RRS 62.1(a).

### 3. CHANGES TO SAILING INSTRUCTIONS

- 3.1. Any change to the sailing instructions will be posted before 0900 on the day it will take effect, except that any change to the schedule of races will be posted by 2000 on the day before it will take effect.
- 3.2. Oral changes may be made to the sailing instructions may be made by the Race Committee on the water by posting Code Flag L ("Come within hail") and communicating the change to each boat as they sail by. **Boats must come within hail of the RC Signal boat to acknowledge receiving the instruction change.** Changes will also be broadcast on VHF channel 72, but this does not supersede a boat's requirement to come within hail of the RC Signal boat.

### 4. SIGNALS MADE ASHORE

- 4.1. Signals made ashore will be displayed at the flagpole located in front of the AYC.
- 4.2. When flag AP is displayed ashore, '1 minute' is replaced with 'not less than 60 minutes' in the race signal AP.

**5. SCHEDULE**

Friday, Oct 5	1700 – 2100	Registration/Check-In at AYC Distribution of Race Packets Competitor Briefing at AYC
	1930	
Saturday, Oct 6	0830 - 0900	Continental Breakfast at AYC
	<b>1100</b>	First Race Warning
	1700	No Warning signal will be made after
Sunday, Oct 7	1100	First Race Warning
	1500	No warning signal will be made after
	ASAP after racing	Awards presentation at AYC

**Commented [1]:** This is from Tulip. Will there be breakfast?

5.1. The race committee will start no more than five (5) races for each class on each day of racing.

**6. CLASS FLAGS**

- 6.1. Class flags will be numeric international code flags corresponding to each class.
- 6.2. Each class will be assigned an identifying color and class flag at the competitor meeting.
- 6.3. Colored ribbons corresponding to a boat's class will be issued at the competitor meeting.
- 6.4. Class ribbons shall be flown from the most visible location near the aft most part of the boat.

**7. RACING AREAS**

- 7.1. The racing area will be in the vicinity of Fidalgo Bay and Guemes Channel. The race committee reserves the right to move the course to another location if conditions and commercial traffic dictate.

**8. THE COURSES**

- 8.1. The diagram in Attachment 1, and chart in Attachment 2 identify the relative mark locations.
- 8.2. The race committee may or may not use all marks or set all marks listed during each race.
- 8.3. Marks, S, A, B, C, D & W, if used, are to be left to port. Guemes Channel permanent marks may be used on Saturday.
- 8.4. No later than the warning signal, the race committee will designate the course by displaying a number representing the class or classes followed by a series of letters representing the marks of the course.
- 8.5. Some starts may include multiple classes.

**9. MARKS**

- 9.1. Marks A, D, W and S will be yellow inflatable cylinders.
- 9.2. Marks B, C and F will be orange inflatable cylinders.
- 9.3. A race committee vessel may use its engine to hold position. This shall not constitute grounds for redress. This changes Rule 62.1(a).

**10. THE START**

- 10.1. Races will be started by using Rule 26.
- 10.2. The starting line will be between a staff displaying an orange flag on the signal vessel at the starboard end and the course side of the port-end starting mark.
- 10.3. A limit buoy attached to the race committee signal vessel shall be considered part of the mark.
- 10.4. Boats whose warning signal has not been made shall avoid the starting area during the starting sequence for other races. [DP]
- 10.5. The Race Committee will attempt to hail the sail numbers of individually recalled boats on VHF channel 72. Failure to do so, the timing, the order of the hails, the failure to hear the hail,

or any other issues regarding the hail shall not constitute grounds for redress. This changes RRS 62.1(a).

- 10.6. If the warning signal for a succeeding class is made with the starting signal of a preceding class, and if the preceding class has a general recall, then the class flag of the succeeding class will be removed and the start of the succeeding class will be considered abandoned without further signal. This changes Rule 26 and 27.3.

#### **11. THE FINISH**

- 11.1. The finishing line will be between a staff displaying a blue flag on the signal vessel and the course side of the finishing mark on the side opposite of the starting line.
- 11.2. Boats who have finished and are no longer racing shall avoid the finishing area so as to not interfere with boats racing. [DP]

#### **12. PENALTY SYSTEM**

- 12.1. Appendix V1 of the RRS applies.

#### **13. TIME LIMITS AND TARGET TIMES**

- 13.1. The time limit for the first boat in each class to finish is three (3) hours after her starting signal on Saturday and two (2) hours on Sunday.
- 13.2. Boats failing to finish within 45 minutes after the first boat in her class sails the course and finishes will be scored Did Not Finish without a hearing. This changes Rule 35, A4 and A5.
- 13.3. The target time for each race will be one (1) hour (2 hours for mid distance race on Saturday, if it is run). Failure to meet the target time will not be grounds for redress. This changes Rule 62.1(a).

#### **14. PROTESTS AND REQUESTS FOR REDRESS**

- 14.1. Protest forms are available at the race office, located on the lower level the AYC clubhouse. Protests and requests for redress or reopening shall be delivered there within the appropriate time limit.
- 14.2. The protest time limit is 60 minutes after the race committee signal boat returns to the dock.
- 14.3. Notices will be posted no later than 15 minutes after the protest time limit to inform competitors of hearings in which they are parties or named as witnesses. Hearings will be held in the protest room, located on the lower level of the AYC clubhouse, beginning 30 minutes after the protest time limit.
- 14.4. Notices of protests by the race committee, technical committee or protest committee will be posted to inform boats under Rule 61.1(b).
- 14.5. Breaches of SI 10.4, 11.2, 16, 17, 19 and 20 will not be grounds for a protest by a boat. This changes Rule 60.1(a).
- 14.6. On the last scheduled day of racing a request for redress based on a protest committee decision shall be delivered no later than 15 minutes after the decision was posted. This changes Rule 62.2.
- 14.7. If the race committee posts a list of boats scored OCS, ZFP, UFD or BFD on the official notice board before the protest time limit, a request for redress based on such a posted score shall be made no later than 30 minutes after the protest time limit. This changes Rule 62.2.

#### **15. SCORING**

- 15.1. A boat's series score will be the total of her race scores (no discarded scores). This changes Rule A2.
- 15.2. PHRF classes shall be scored using Time-on-Time ratings. One-Design or Level classes shall be scored by the order of finish.
- 15.3. There MAY be daily scoring that is separate from the Overall Series.

#### **16. SAFETY REGULATIONS**

- 16.1. Before the first warning signal of each day of racing all boats shall sail by the committee vessel and visually check in. [DP]
- 16.2. A boat that makes contact with a race committee vessel shall be responsible for all costs of the damage. This changes Rule 67.
- 16.3. Boats shall not impede the safe passage of a stand on vessel not racing and shall comply with the International Regulations for Prevention of Collisions at Sea, 1972 (72 COLREGS). [DP]
  - 16.3.1. It is strongly advised that all boats monitor commercial vessel traffic channels (VHF Channel 5 and 16) and AIS if possible.
  - 16.3.2. Any boat that fails to comply promptly with signals from a committee vessel to alter course, or that receive a 5-blast warning (5 short sounds) from a stand on vessel, shall be subject to protest. [DP]
- 16.4. A boat that retires from a race shall notify the race committee as soon as possible. [DP]

#### **17. RADIO COMMUNICATION**

- 17.1. Except in an emergency, a boat shall neither make radio transmissions while racing nor receive radio communications not available to all boats. This restriction also applies to mobile telephones. [DP]

#### **18. PRIZES**

- 18.1. Prizes will be awarded to the top boats in each class.
- 18.2. The number of prizes will be adjusted to suit the number of competitors pre-registered. Additional prizes may be awarded at the discretion of the organizing authority.

#### **19. RISK, DISCLAIMER OF LIABILITY, & PERSONAL CONDUCT**

- 19.1. Competitors participate in the regatta at their own risk. See Rule 4 (Decision to Race). The organizing authority will not accept any liability for material damage or personal injury or death sustained in conjunction with or prior to, during, or after the regatta.
- 19.2. Competitors will accept full responsibility for their actions during any activity related to this event. This includes on-shore activities before, during, and after the regatta. [DP]

#### **20. INSURANCE**

- 20.1. Each participating keelboat shall be insured with valid third-party liability insurance with a minimum cover of \$500,000 per incident or the equivalent. [DP]

#### **21. [DP] NOTATION**

- 21.1. The notation '[DP]' in a rule in the SI means that the penalty for a breach of that rule may, at the discretion of the protest committee, be less than disqualification.

## ATTACHMENT 1 – COURSE DIAGRAM

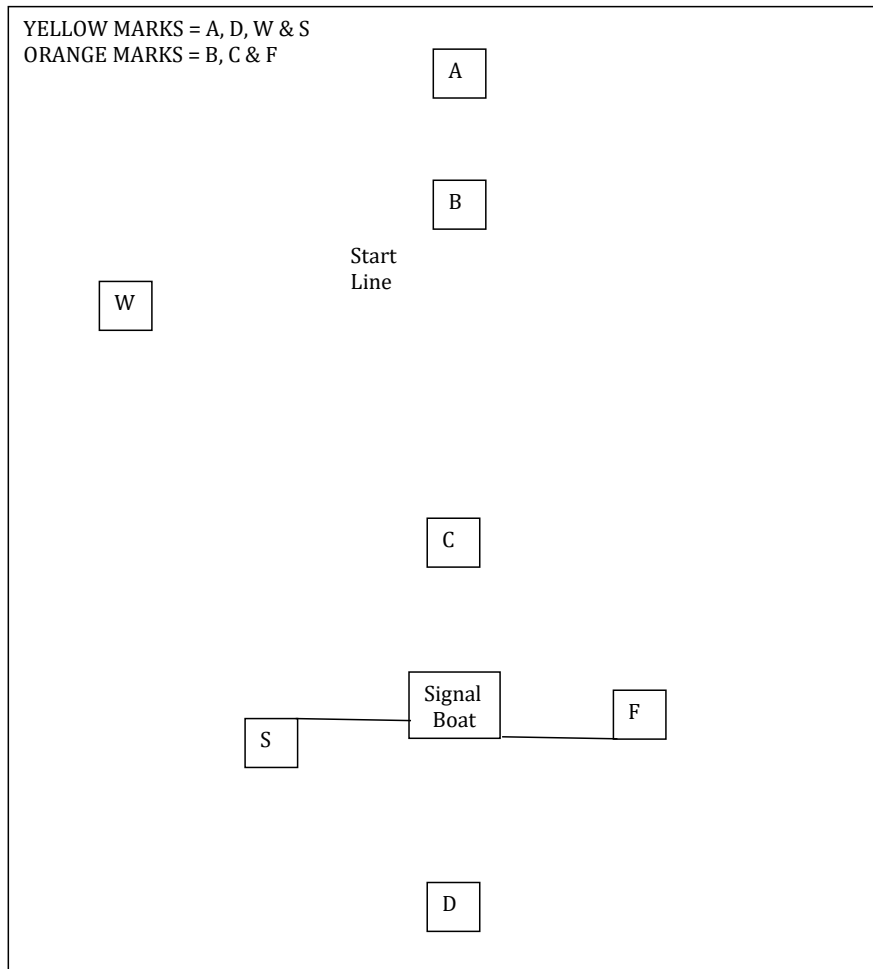
Courses for each class will be defined by a placard on the committee boat bearing a number representing the class and a series of letters representing the course. Marks S, A, B, C, D & W are to be left to port.

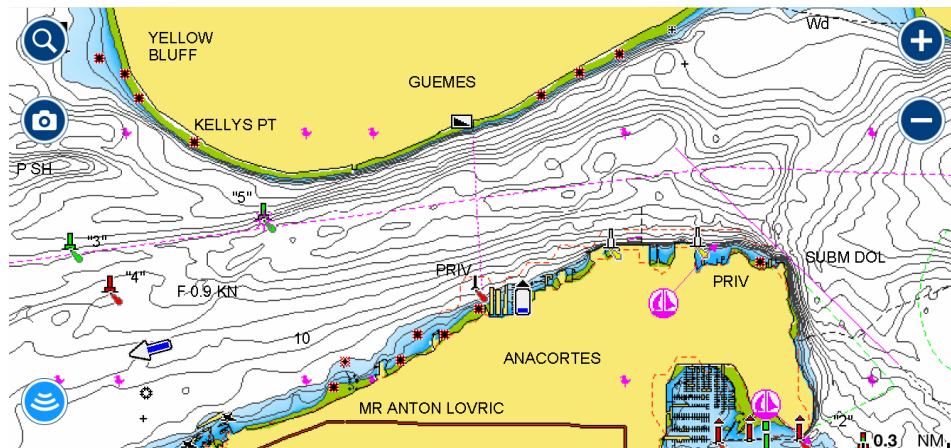
### Example Course – 1:SADF

Class 1; Start, Round A to Port; Round D to Port, Upwind Finish

### Example Course – 3+4:SAWCBF

Class 3 and 4; Start, Round A to Port; Round W to Port; Round C to Port, Round B to Port, Downwind Finish





## ATTACHMENT 2: GUEMES CHANNEL MARKS

Marks in Guemes Channel will be identified as G5, R4, and G3. All marks shall be rounded to Port.

The merlot-colored arrow marks the Spring Wine Festival, our viewing audience!

Guemes Channel marks MAY be included with temporary marks on the course board. For example: S G3 D F, (if G3 was an upwind mark).