

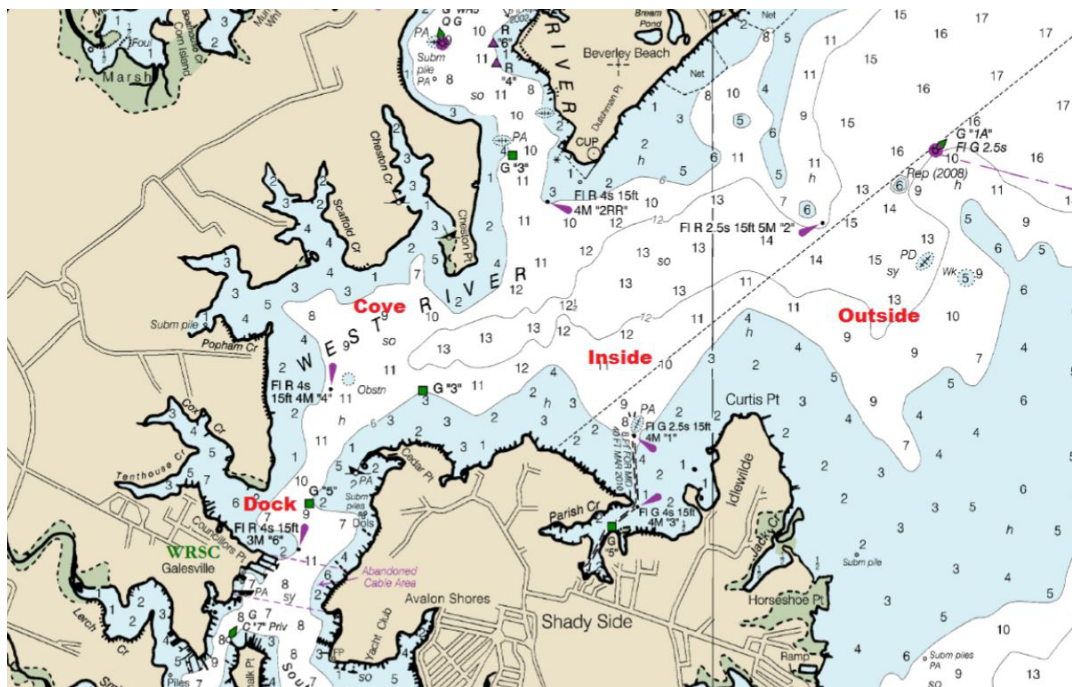
West River Sailing Club
2018 Pumpkin Patch Regatta
 October 20-21, 2018



SAILING INSTRUCTIONS

- 1.1 Rules** The regatta will be governed by the rules as defined in *The Racing Rules of Sailing*.
- 2.1 Official Notices** Notices to competitors will be posted on the notice board located on the East window of the WRSC clubhouse.
- 3.1 Changes to SI's** Any shore side change in the sailing instructions will be posted on the official notice board before 0900 on the day it will take effect, except that any change to the schedule of races will be posted by the end of protest time on the day before it will take place.
- 4.1 Schedule of Races**

Saturday, October 20, 2018	0900	Competitors' Meeting
	1030	First Warning Signal
	1800	Dinner
Sunday, October 21, 2018	1030	First Warning Signal
	1400	Last Race
		Awards as soon as is practicable.
- 5.1 Racing Area** The venue shall be finalized by the RC on race day. There are four racing areas. See chart below.





SAILING INSTRUCTIONS

- 6.1 Courses** Courses will be shown in Appendix A.
- 7.1 Marks** All marks will be as described at the Competitors' Meeting
- 8.1 The Start** The starting line will be between a staff displaying an orange flag on the race committee vessel and the course side of the starting mark.
- 9.1 The Finish** The finishing line will be between a staff displaying an orange flag on the race committee vessel and the course side of the finishing mark.
- 10.1 Time Limits** The first boat must finish within 45 minutes
- 10.2** All boats failing to finish within 30 minutes after the first boat finishes, will be scored DNF without hearing. This changes RRS 35, A4 and A5.
- 11.1 Protests + Requests for Redress** Protest Forms are available in the board room. Protests and requests for redress or reopening shall be delivered to the PRO within one hour after the RC returns to the dock
- 11.2** Protests must be reported to the Finish RC within 15 minutes after the protestor's finish.
- 11.3** Notices will be posted no later than 30 minutes after the protest time limit to inform competitors of hearings in which they are parties or named as witnesses and where the hearings will be held.
- 12.1 Penalty System** Rule 44.1 is changed so that the Two-Turns Penalty is replaced by the One-Turn Penalty.
- 13.1 Scoring** One race is required to be completed to constitute a series. One throwout will be given after race 5 and another after race 12.
- 14.1 Safety Regulations** All competitors' boats shall sail astern of the Signal Boat, give their sail number, and wait for acknowledgement from the RC.
- 14.2** A boat that retires from a race shall notify the RC as soon as possible.
- 15.1 Support Boats** Support boats shall be marked "WRSC" or as described at the competitor's meeting.
- 16.1 Awards** There will be prizes for the first three overall finishers in each class.



SAILING INSTRUCTIONS

17.1 Disclaimer of Liability

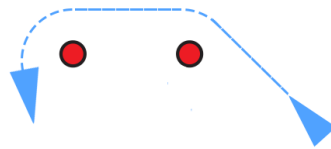
Competitors participate in the regatta entirely at their own risk. See RRS 4, Decision to Race. The organizing authority will not accept any liability for material damage or personal injury or death sustained in conjunction with or prior to, during, or after the regatta.

APPENDIX A

MARK CONFIGURATION AND POSSIBLE COURSES

The courses to be sailed will be as follows: Port rounding of windward mark with offset, leeward gate, TWO (2) laps, downwind finish. Course length shall be set to attempt to achieve races of approximately 30 minutes in duration. See graphic below.

Windward Mark



Gate

