



Cabrillo Series

PHRF, ORR, and One Design Fleets
San Diego, California
Winter 2019

**SEVEN
CAVES**
SPIRITS



SAILING INSTRUCTIONS

| | | |
|-----------------------|------------------|--|
| Event Chair | Sandra Sherman | slshe@cox.net |
| Sail Fleet Chair | Ian Trotter | ian@chulavistaphoto.com |
| Race Management Chair | Chris Brzezinski | RCChair@southwesternyc.org |
| Protest Chair | Summer Greene | Protests@southwesternyc.org |

1. RULES
 - 1.1. The Series will be governed by the rules as defined in The Racing Rules of Sailing (RRS)
 - 1.2. RRS rule 55 is changed by adding the following sentence to the rule: "However, discarding biodegradable bands when setting a sail is permitted." Racers remain responsible for compliance with all applicable state and federal laws.
 - 1.3. When a boat sailing under the RRS meets a boat that is not, she shall comply with the International Regulations for Preventing Collisions at Sea.
 - 1.4. All racers shall adhere to the defined Naval Protection Zone (33 C.F.R. 165.2030).
2. NOTICE TO COMPETITORS
 - 2.1. Notices to competitors will be posted on the Event Website (<http://www.regattanetwork.com/event/17866>) and on the RC Bulletin Board adjacent to the SWYC office no later than 0900 hours on the day of the event.
3. CHANGES IN SAILING INSTRUCTIONS
 - 3.1. Ashore: Any change in the Sailing Instructions will be posted on the SWYC bulletin board and on the Event web site prior to 0900 hours on the day of each event.
 - 3.2. Afloat: Any change in the Sailing Instructions made afloat will be communicated via VHF Channel 68 and/or loud hailer.
 - 3.3. The Race Committee will monitor and communicate on VHF Channel 68 when on station.
4. SCHEDULE OF RACES
 - 4.1. Cabrillo I: Saturday, January 12th
 - 4.2. Cabrillo II: Saturday, February 2nd
 - 4.3. Cabrillo III: Saturday, March 2nd
 - 4.4. Cabrillo IV: Saturday, March 23rd
 - 4.5. **Time of the first warning for each race will be 1155 hours.**
5. CLASSES, CLASS FLAGS AND STARTING ORDER
 - 5.1. Class Assignments, Class Flags and Starting Order will be established and posted on the regatta website no later than 1200 Friday, January 11th, 2019,

and shall be considered an amendment to the sailing instructions. Provisional assignments MAY be posted earlier.

- 5.2. Class flags will be displayed from the yacht's backstay. Boats without a backstay shall display their pennants in a prominent manner on the stern.
6. CHECK-IN
 - 6.1. Eligible yachts complete their entry by checking in with the RC boat prior to the first warning signal. Yachts checking in shall pass the RC boat to starboard and hail with sail number and class. Check-in will be complete only when RC boat responds with that information. **THERE WILL BE NO RADIO CHECK-IN.**
7. RACING AREA
 - 7.1. The starting area for each race will be approximately .2 NM off Zuniga Jetty End bearing 070° as shown in Attachments A - D. (approximate position: N 32° 40' 02.5" W 117° 13' 06.3" / N 32° 40.04' W 117° 13.11')
 - 7.2. The finish area for each course will be approximately .2 NM off Zuniga Jetty end bearing 070°, as shown in Attachments A - D. (approximate position: N 32° 40' 02.5" W 117° 13' 06.3" / N 32° 40.04' W 117° 13.11')
 - 7.3. The racing areas for each race are as described below and as shown in attachments A - E.
 - 7.4. Cabrillo I: All Classes will sail the same course. **See Attachment A.**

Start (.2 NM off Zuniga Jetty end bearing 070°)

Leave North Coronado Island to Port

Leave Middle Coronado Island to Port

Finish (.2 NM off Zuniga Jetty end bearing 070°)

NOTE 1: Distance for handicap purposes is 32.7 nautical miles.

NOTE 2: Chart Reference: NGA 18765 and 18073.

No change of course shall be made after the start.

MARKS

North Coronado Island

Middle Coronado Island

- 7.5. Cabrillo II: All Classes will sail the same course. **See Attachment B.**

Start (.2 NM off Zuniga Jetty end bearing 070°)

Leave SD Bay Buoy 5 to Port

Leave U.S. Navy Mooring Buoy TG - 1 to Starboard

Leave South Coronado Island to Starboard

Leave Middle Coronado Island to Starboard

Leave U.S. Navy Mooring Buoy TG-1 to Port

Finish (.2 NM off Zuniga Jetty end bearing 070°)

NOTE 1: Distance for handicap purposes is 44.3 nautical miles.

NOTE 2: Chart Reference: NGA 18765 and 18073.

No change of course shall be made after the start.

MARKS

SD Bay Buoy 5

U.S. Navy Mooring Buoy TG-1

South Coronado Island

Middle Coronado Island

- 7.6. Cabrillo III: All Classes will sail the same course. **See Attachment C.**

Start (.2 NM off Zuniga Jetty End bearing 070° magnetic)

Leave Buoy SD to Port

Leave U.S. Navy Mooring Buoy TG1 to Starboard

Leave North Coronado Island to Port

Leave Middle Coronado Island to Port

Leave South Coronado Island to Starboard

Leave North Coronado Island to Starboard

Leave U.S. Navy Mooring Buoy TG1 to Port

Finish (.2 NM off Zuniga Jetty Light End bearing 070° magnetic)

NOTE 1: Distance for handicap purposes is 48.5 nautical miles.

NOTE 2: Chart Reference: NGA 18765 and 18073.

No change of course shall be made after the start.

MARKS

Buoy SD

U.S. Navy Mooring Buoy TG-1

North Coronado Island

Middle Coronado Island

South Coronado Island

- 7.7. Cabrillo IV: All Classes will sail the same course. **See Attachment D.**

Start (.2 NM off Zuniga Jetty End bearing 070° magnetic)

Leave Buoy SD to Port

Leave U.S. Navy Mooring Buoy TG1 to Port

Leave Buoy 6 to Port

Leave Buoy SD to Port

Leave U.S. Navy Mooring Buoy TG1 to Port

Finish Buoy 6

NOTE 1: Distance for handicap purposes is 18.8 nautical miles.

NOTE 2: Chart Reference: NGA 18765 and 18073.

MARKS

Buoy SD

U.S. Navy Mooring Buoy TG-1

SD Bay Buoy 6

- 7.8. In case of inclement weather, all classes will sail the same alternate course.
See Attachment E.

Start vicinity SD Bay Buoy 17

Leave FM 19 to Starboard

Leave Coronado Bay Bridge Stanchion 19 to Starboard

Leave SD Bay Buoy 19 to Port

Leave SD Bay Buoy 26 to Starboard
Leave SD Bay Buoy 26a to Starboard
Round SD Bay Buoy 38 to Starboard
Leave SD Bay Buoy 26 to Port
Leave SD Bay Buoy 26a to Port
Leave FM 19 to Port
Leave SD Bay Buoy 12 to Starboard
Finish vicinity SD Bay Buoy 17

NOTE 1: Distance for handicap purposes is 28.2 nautical miles.

8. START

- 8.1. The race will be started in accordance with RRC 26, in the class order posted on the event web site.
- 8.2. The starting line will be between a staff displaying an orange flag on the RC boat at the starboard end and a yellow tetrahedron mark at the port end.
- 8.3. A distance buoy may be streamed aft of the RC boat and if present shall be considered part of the RC boat.
- 8.4. The warning signal for each class will be five (5) minutes prior to its start.
- 8.5. Yachts whose warning signal has not been made shall avoid the starting area.
- 8.6. The RC will signal the next class to start using the class flags as assigned in Section 5.
- 8.7. **The RC may eliminate or combine starts without prior notice, depending on entries. Class pennants will indicate combined starts. The RC may announce any such changes on VHF Channel 68.**

9. RECALLS

- 9.1. General and Individual recalls shall be signaled in accordance with RRS 29.1. The RC may attempt to notify premature starters either by loud hailer or VHF Channel 68. Failure of a yacht to hear a hail **OR** failure of the RC to hail shall not be grounds for redress. It is the responsibility of each yacht to start properly.
- 9.2. Premature starters failing to return and start properly will be penalized by having one hour added to their corrected times. This alters RRS 29.1.

10. WITHDRAWAL

- 10.1. A yacht that retires from the race **must notify the RC via VHF Channel 68** before leaving the course or email the Race Management chair at the email provided above. Failure to do this shall result in disqualification from this race and possible rejection of entry for subsequent races.

11. FINISH

- 11.1. When the lead yacht of the leading class is within two hours of finishing, she is requested to so advise the RC via VHF Channel 68.
- 11.2. The finishing area will be approximately .2 NM off Zuniga Jetty end bearing 070°.
- 11.3. The finish line will be between a staff displaying an orange flag on the RC boat at the starboard end and a yellow tetrahedron mark at the port end. A proper finish will leave the RC boat to starboard. After sunset, the RC shall attempt to display a yellow strobe light.
- 11.4. If, for any reason, the RC boat is not on station at the finish, yachts shall take their own time when the position of Zuniga Jetty light Z bears 270° magnetic and is within 500 yards. Boats shall document the time they pass through the finish by taking a legible photo or screen shot of boat navigation equipment

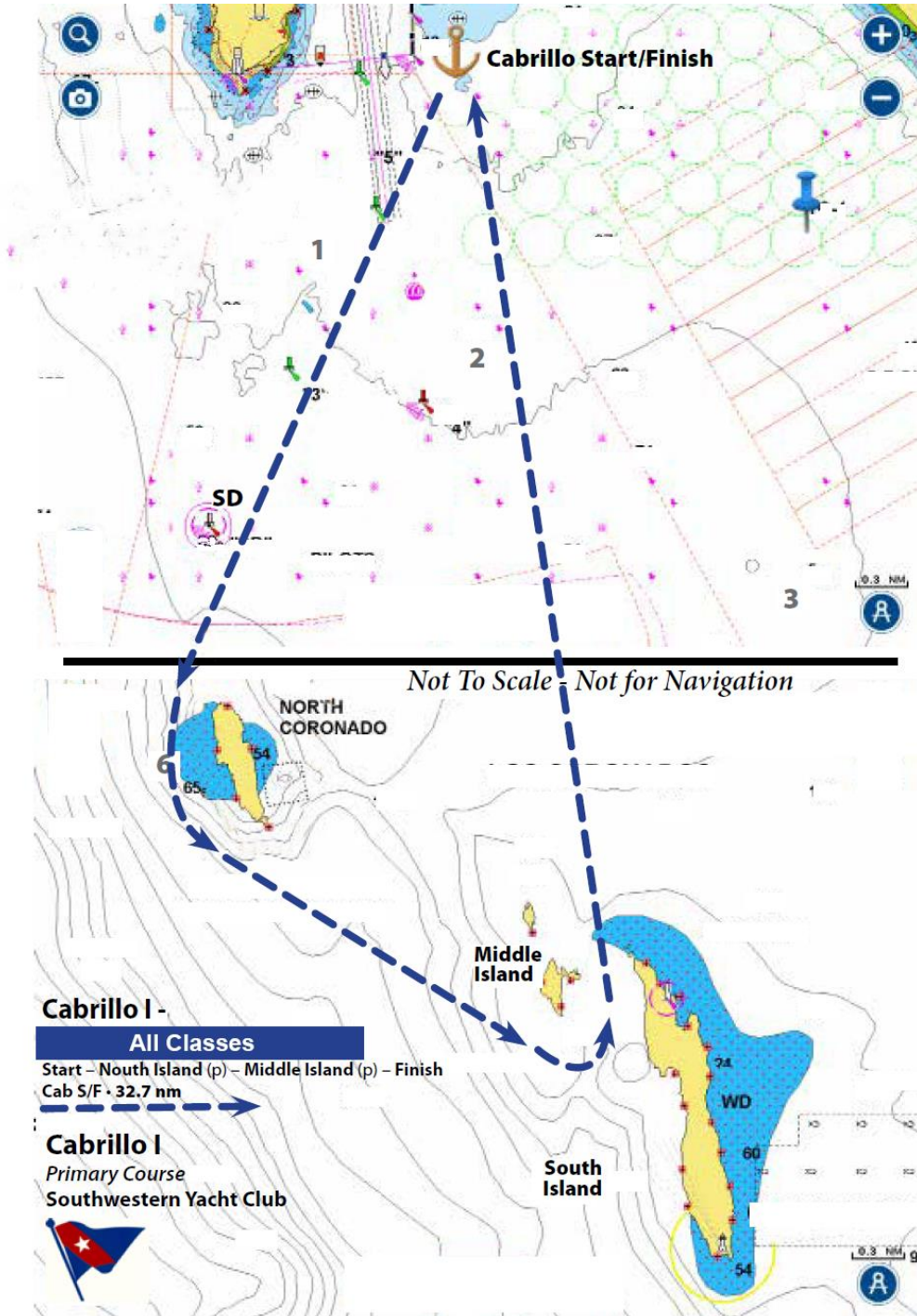
showing Pacific Standard Time, and current latitude/longitude of their vessel, and emailing the image to RCChair@southwesternyc.org no later than 90 minutes after her finish. Ensure your yacht name is in the subject line of the email. Finishers should note sail numbers of other yachts finishing at approximately the same time.

- 11.5. If a yacht does not finish by 0200 hours the following day, she shall follow the instructions in 11.4.
12. TIME LIMIT
 - 12.1. There is no time limit for Cabrillo I, Cabrillo II, and Cabrillo III. The time limit to finish Cabrillo IV is 1700 hours on Saturday, March 23, 2019.
13. PROTESTS
 - 13.1. Protests shall be initiated in compliance with RRS 61, except as amended by these Sailing Instructions.
 - 13.2. Protest flags shall be displayed from the backstay. On yachts that have no backstays, the protest flag will be displayed in a prominent position on the stern.
 - 13.3. Protesting yachts shall notify the RC boat (when on station), as soon as possible after finishing the race, of their intent to file a protest and receive RC acknowledgment.
 - 13.4. In all cases, protesting yachts shall lodge their written protest by emailing the Race Committee at: protests@southwesternyc.org. Protests for Cabrillo I, II, III shall be filed no later than 1100 hours the Sunday following each race. Protests for Cabrillo IV shall be filed no later than 60 minutes after the RC boat docks.
 - 13.5. For Cabrillo I,II, & III, notice of protest and yachts involved, including names of witnesses, if known, and the schedule of hearings, will be posted on the event web site at <http://www.regattanetwork.com/event/17866> and the SWYC bulletin board by 1700 hours the Monday following each race. The protest committee will attempt to notify competitors by text message and/or email. Failure to post the notices on the regatta website or send the text message or email notification shall not be grounds for redress or reopening. This changes rule 62.1(a). For Cabrillo IV, notice of protest and yachts involved including names of witnesses, if known, and the schedule of hearings will be posted on the RC Bulletin Board adjacent to the SWYC office within 30 minutes of the expiration of the protest time.
 - 13.6. For Cabrillo I, II, & III, protests will be heard at SWYC at 1900 hours the Thursday following the race. For Cabrillo IV, protests will be heard in the approximate order of receipt as soon as possible after the day's racing is complete.
14. PROTEST ARBITRATION
 - 14.1. Arbitration will be available according to Appendix T for breaches of the rules of Part 2 where there is no damage or injury. Protests not resolved through arbitration or Request for Redress will be referred to the Protest Committee for a hearing.
15. SCORING
 - 15.1. This series will be scored as provided in the Notice of Race.
 - 15.2. PHRF Classes shall be scored using PHRF San Diego Random Leg Course ratings using time on distance.
 - 15.3. ORR Classes will use their current ORR Certificate and be scored using Time on Time with their California Offshore Rating.

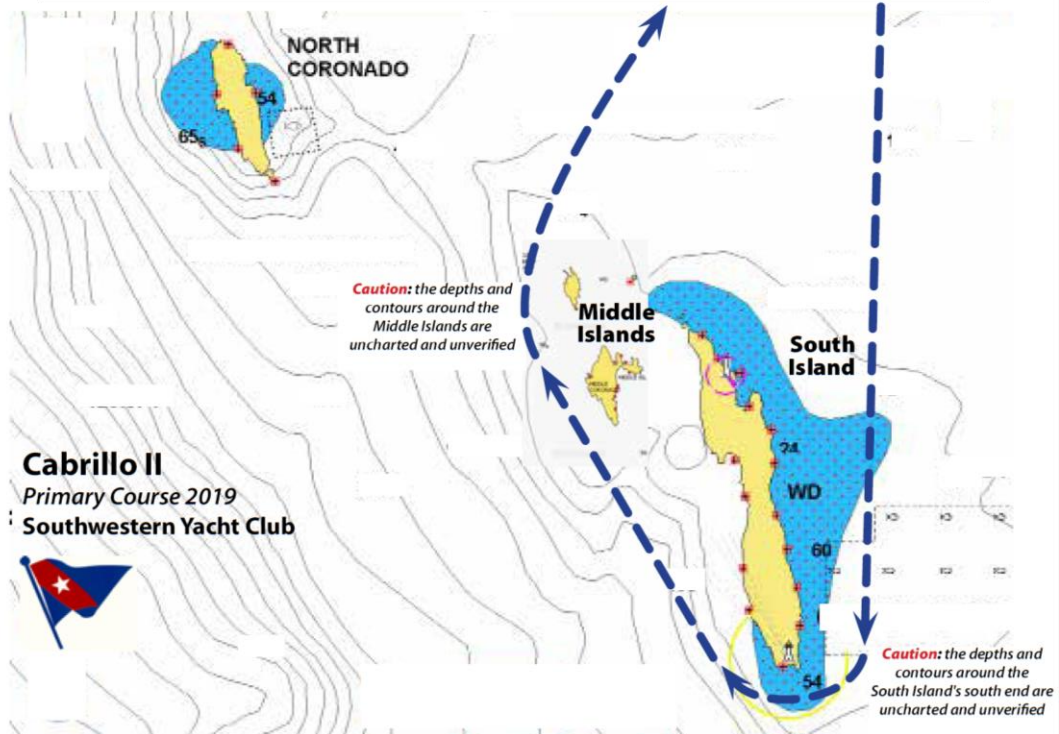
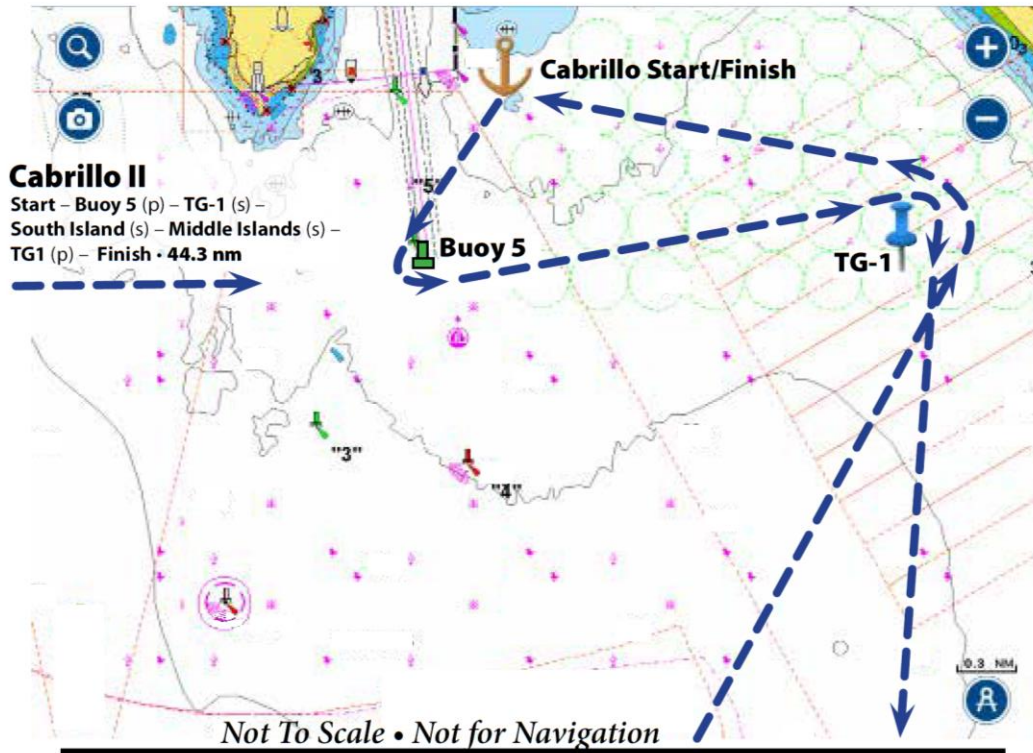
- 15.4. Ratings used to score this regatta will be the PHRF Southern California Area G ratings as determined and supplied by PHRF San Diego. Yachts may not change Fleet/Class during the series.
 - 15.5. RRS 44.3 Scoring Penalty shall apply.
 - 15.6. Each series race will be scored with the Low-Point System as provided in Appendix A of the RRS with Section A9 in effect.
 - 15.7. Four races have been scheduled for the Cabrillo Series. Although a yacht may enter the series at any time, the series trophy will be awarded based on the best cumulative racing record in the four races of the series, with one "throw out" race.
16. SAFETY
- 16.1. International Regulations for Preventing Collisions at Sea or government right-of-way rules shall replace Part 2 of RRS between sunset and sunrise.
 - 16.2. US **Coastal** Safety Equipment is required for Cabrillo I, II, III races in addition to all required USCG boating requirements.
 - 16.3. US **Nearshore** Safety Equipment is required for Cabrillo IV race in addition to all required USCG boating requirements.
 - 16.4. US Sailing Coastal and Near Shore Requirements can be found here:
https://www.ussailing.org/wp-content/uploads/2018/03/US_SER_2018.0_Categories.pdf
 - 16.5. The US Sailing Safety Equipment Requirements (SER) are modified for the following sections:
 - 16.5.1. SER 2.5.1- Primary Operating Bilge Pump – Required. Currently installed bilge pump/switching/drainage/capacity satisfactory.
 - 16.5.2. SER 2.4.4 – Lifelines -Required. Existing factory installation is satisfactory.
 - 16.5.3. SER 3.1.2 – PFD Crotch/Leg Straps - Required. No Competitor may protest a boat for infringing this rule. This modifies RRS 60.1.
 - 16.5.4. SER 3.1.4 – Safety Harness & Tether – Required. No Competitor may protest a boat for infringing this rule. This modifies RRS 60.1.
 - 16.5.5. SER 3.6.2, 3.6.6 – Flares - All yachts must meet the USCG flare requirements (SOLAS certification recommended).
 - 16.5.6. SER 3.8.1 – VHF marine radio & Handheld Backup VHF with DCS Capability - Required. No Competitor may protest a boat for infringing this rule. This modifies RRS 60.1.
 - 16.5.7. SER 3.16.2 – EPIRB/PLB -Not required but recommended.
 - 16.5.8. SER 3.31 – All Specified Gear Identification -Not required but recommended.
 - 16.5.9. SER 3.33.1 – Boats shall have a means to reduce main sail area - (Currently used method & reduction percentage satisfactory).
 - 16.5.10. SER 4.3.2 – Safety at Sea training – Not required but highly recommended. The Organizing Authority strongly recommends that all competitors take the opportunity to attend an upcoming Seminar:
<http://www.ussailing.org/education/safety-at-sea/>.
 - 16.6. Each participating yacht shall carry at least 1.5 times the minimum fuel it requires to return, at maximum rated engine speed, from the furthest point on the course to the nearest emergency services.
 - 16.7. Each participating yacht shall have a minimum of three sailors aboard for each race.

17. U.S. CUSTOMS AND BORDER PROTECTION REQUIREMENTS
 - 17.1. Customs clearance is not required by yachts of American registry that are properly entered in the race, do not terminate the voyage in Mexican waters, and do not make contact with another vessel while in Mexican waters. Such vessels are not considered by U.S. Customs to have left the United States.
 - 17.2. Yachts not complying with 4.1 above must comply with U.S. Customs procedures for arrival from a foreign port on their own.
 - 17.3. The UN Convention on the Law of the Sea (UNCLOS), Section 3 addresses “innocent passage”.
http://www.un.org/Depts/los/convention_agreements/texts/unclos/clscont.htm
 - 17.4. Yachts not complying with the definition of “innocent passage” in UNCLOS Article 19 while sailing in Mexican waters must comply with Mexican procedures and regulations on their own.
18. POST-RACE ACTIVITIES
 - 18.1. The membership invites all racers to enjoy the hospitality of the SWYC clubhouse after each day’s racing.
19. PRIZES
 - 19.1. Trophies will be awarded at SWYC on Saturday, March 23rd, 2019 after Cabrillo IV.
20. DISCLAIMER OF LIABILITY
 - 20.1. Competitors participate in the regatta entirely at their own risk. See RRS rule 4, decision to race. The organizing authority will not accept any liability for material damage or personal injury or death sustained in conjunction with or prior to, during, or after the regatta.
21. FURTHER INFORMATION
 - 21.1. Event Chair Cabrillo Series S/C Sandra Sherman slsherman@cox.net

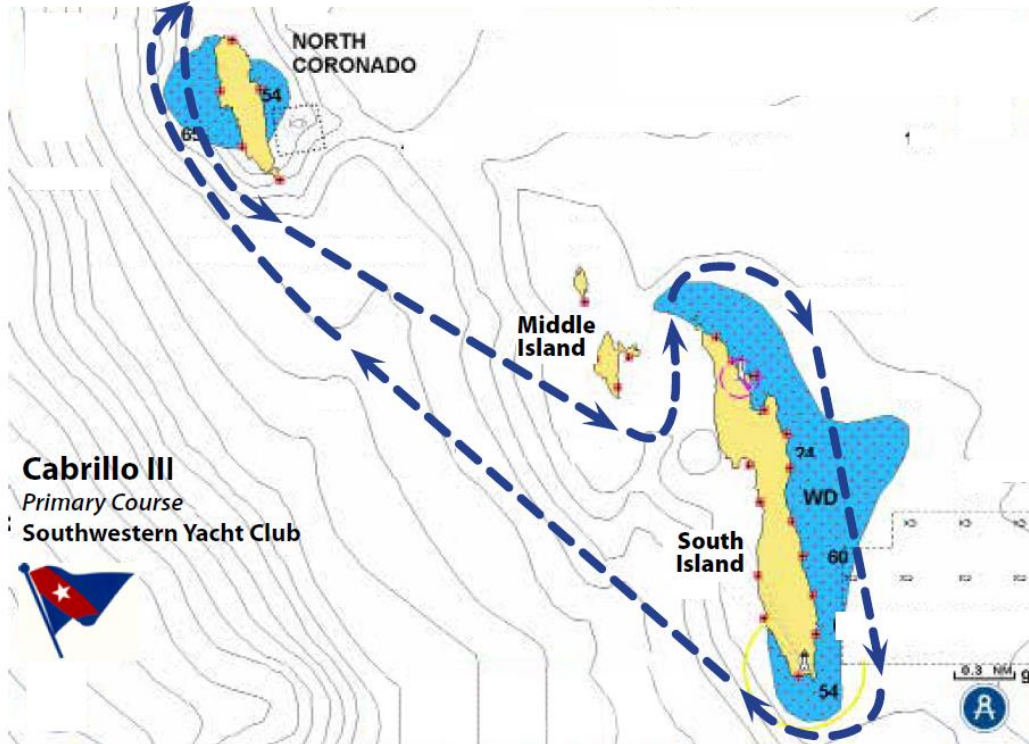
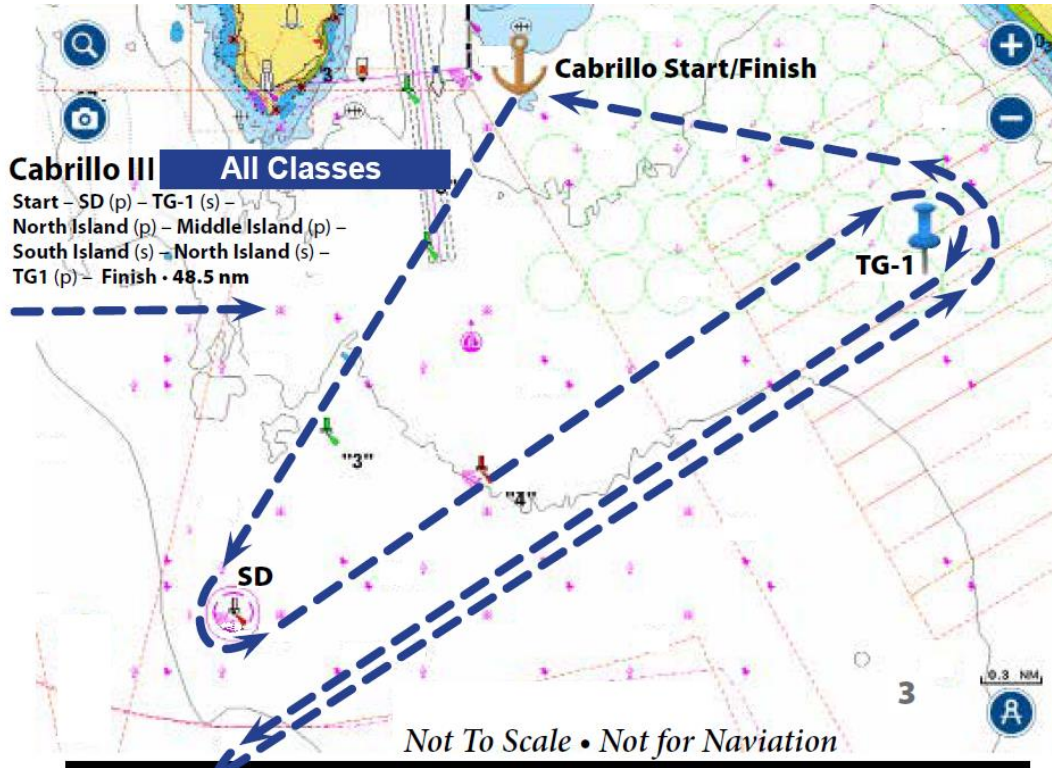
Attachment A



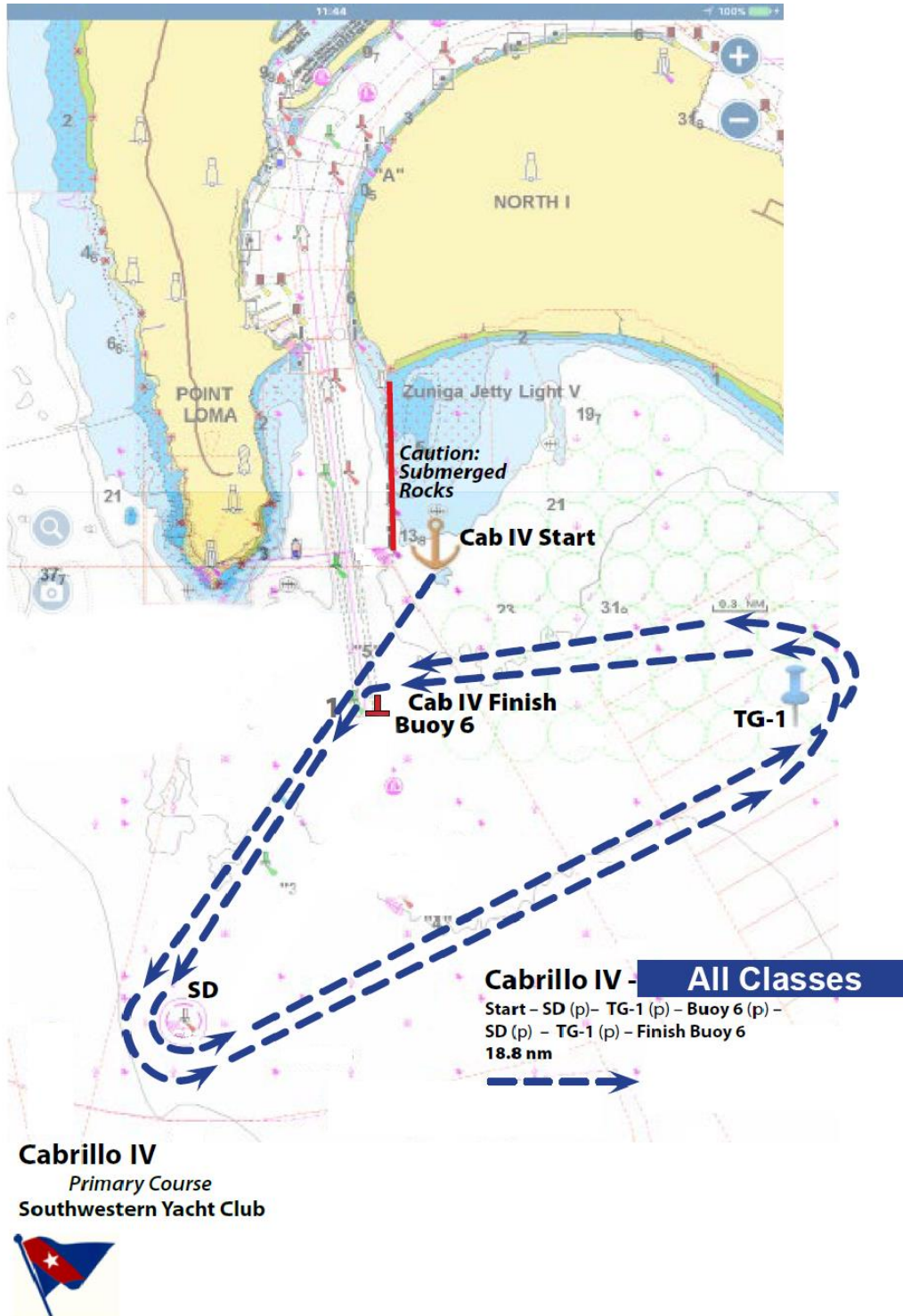
Attachment B



Attachment C



Attachment D



Attachment E

ALTERNATE (INCLEMENT WEATHER) COURSE – All Classes



START 17 - 12 - FM19 s - BridgePier19 s - 19 - 26 s - 26a s - 38 - 26 - 26a - FM19 - 12 s - 17 FINISH

28.2 nm