

# GULFPORT YACHT CLUB WEATHERLY REGATTA 2019

## *Sailing Instructions*

### 1 RULES

- 1.1 The regatta is organized by the Gulfport Yacht Club and will be sailed under the management of the Gulfport Yacht Club Race Committee.
- 1.2 The regatta will be governed by the rules as defined in the *Racing Rules of Sailing*, the *GYA Regulations for Sanctioned Events*. (Available at [www.gya.org](http://www.gya.org)),
- 1.3 The Racing Rules of Sailing changed by these sailing instructions are as follows:

<u>Racing Rule</u>	changed by	<u>Sailing Instruction</u>
Race Signals		3,5.2,13,15.1

### 2 Eligibility:

All Yacht Clubs which are current General Members of the Gulf Yachting Association are eligible to participate in the Capdevielle Flying Scot Class. All other classes are open to all sailors.

### 3 NOTICES TO COMPETITORS

Notices to competitors will be posted on the official notice board located on the lower deck by a Race Committee Flag. At the end of each day of racing the race committee will post its docking time as well as any boats that it plans to score in other than their finishing position. Notices of hearings will be posted here within 20 minutes of the expiration of protest time (flag "L" will NOT be displayed with this notice.)

### 4 CHANGES TO SAILING INSTRUCTIONS

Any change to the sailing instructions will be posted one (1) hour before the scheduled start of the first race of the day it will take effect, except that any change in the schedule of races will be posted by 2100 (9:00 p.m.) on the day before it will take effect.

### 5 SIGNALS MADE ASHORE

- 5.1 Signals made ashore will be displayed on the GYC flagpole located on the southeast beach.
- 5.2 Flag "AP" with two sounds (one sound when lowered) means "The race is postponed. The warning signal for the next race will be made not less than thirty (30) minutes after 'AP' is lowered."

### 6 SCHEDULE OF RACES

<u>RACE</u>	<u>DAY</u>	<u>WARNING SIGNAL</u>
Capdevielle Race 1 Start (Other classes to follow) Additional races to follow	Saturday	1:00pm
Capdevielle Start (Other classes to follow) Additional Races if required will follow	Sunday	11:30am

No race shall start after 3:00 P.M.

### 7 CLASS FLAGS

Capdevielle & Open Viper - Viper 640 Class Flag	VX ONE - VX ONE Class Flag
---	----------------------------

## **8 RACING AREA**

The racing areas are shown on Exhibit A and are designated 1 and 2. The Race Committee will display numerical pennant #1 or #2 along with Flag "L" on departure to the racing area each day. The number displayed will indicate the racing area where the Race Committee plans to set the initial course of the day. In the event racing area #1 (West) is signaled, the Gulfport Ship Channel should not be crossed North of Channel Marker # 61, in order to avoid possible shoal water. The approximate location of starting area #2(East) will be South east of the Yacht Club. This changes RRS Race Signals.

## **9 CHECK IN**

Prior to the warning signal for the first race of the day, each boat shall sail past the stern of the Race Committee Signal Boat and hail her sail number until acknowledged by the race committee.

## **10 THE COURSES**

10.1 The selected course will be signaled from the race committee signal boat no later than the warning signal. See Exhibit B.

10.2 The approximate compass bearing from the starting line to first mark will be displayed from the race committee signal boat no later than the warning signal.

## **11 MARKS**

The GATE and MARK 1 will be orange tetrahedrons. The Offset (OS) will be a small orange ball.

## **12 THE START**

12.1 The mark at the starboard end of the starting line will be the Race Committee Signal Boat displaying an orange flag. The port end of the starting line will be a pin boat displaying an orange flag or an orange tetrahedron. The starting line will be between the orange flag displayed on the signal boat and the pin boat/tetrahedron.

12.2 A boat starting later than four (4) minutes after her starting signal will be scored Did Not Start. This changes RRS A4.1

## **13 RECALLS**

Individual recalls will be signaled in accordance with Rule 29.1, with the addition that the race committee will hail the boat's sail number. The delay of such a hail or the failure of a competitor to hear such a hail shall not be grounds for redress. This changes Rule 62.1(a). Flag "X" shall remain displayed until all boats are completely on the pre-start side of the starting line or its extensions and have complied with Rule 30.1, if it applies, but not later than four (4) minutes after the starting signal. This changes RRS 29.1

## **14 CHANGE OF THE NEXT LEG OF THE COURSE**

The Race Committee may change the next leg of the course in accordance with Rule 33

## **15 THE FINISH**

15.1 The finishing line will be between a staff displaying an orange flag on a race committee boat and the nearby mark. On course "W2" the nearby mark will be an Orange Ball.

15.2 The display of Flag "L" from the signal boat at the finish line will indicate that another race is to be sailed. Flag "L" will be lowered with one sound signal one minute prior to the warning signal for the next start. This changes RRS Race Signals.

## **16 PENALTY SYSTEM**

A boat that has completed a One or Two Turns penalty shall additionally inform the race committee finishing line boat upon finishing, or, if unable to finish, at the first reasonable opportunity, and shall include the sail number(s) or otherwise identify the other boat(s) involved in the incident. Failure to comply with this instruction shall risk going thru arbitration to settle this fact or possible protest hearing later. This changes RRS 44.2.

## **17 TIME LIMITS**

The time limit will be 2 hours. Boats failing to finish within 1/2 hour after the first boat sails the course and finishes will be scored Did Not Finish. This changes RRS 35 and A4.1.

## **18 PROTESTS & REQUESTS FOR REDRESS**

- 18.1 A boat intending to file a protest shall additionally, inform the race committee finishing line boat upon finishing, or if unable to finish, at the first reasonable opportunity, of the sail number(s) or otherwise identify the protested boat(s), and receive an acknowledgment from the Race Committee. Failure to do so will make the protest invalid. This changes RRS 61.1(a).
- 18.2 Protests and Requests for Redress shall be written on forms available at the Official Notice Board (lower deck) and delivered there within Protest Time which will begin when the race committee signal boat docks at the end of the day's racing. Protest time will end one hour later.
- 18.3 Notices will be posted within 20 minutes of the protest time limit to inform competitors where and when there is a hearing in which they are parties to a hearing or named as witnesses. Such posting shall constitute notice of hearing as required by rule 63.2.
- 18.4 Protests and Requests for Redress will be heard in approximately the order of receipt.
- 18.5 Appendix T (ARBITRATION) will apply to this event.

## **19 SCORING**

- 19.1 The Low Point scoring system of rule A4 will apply.
- 19.2 Course 1: Five races scheduled of which one shall be completed to constitute a series. Each club's total score will be the sum of its scores for all races. This changes A2.1.
- 19.3 Ties will be decided in accordance with RRS A8
- 19.4 In the event one or more boats are delaying the completion of a race, the race committee may score the boat or boats points equal to their position. This changes RRS A4.1.

## **20 TROPHIES:**

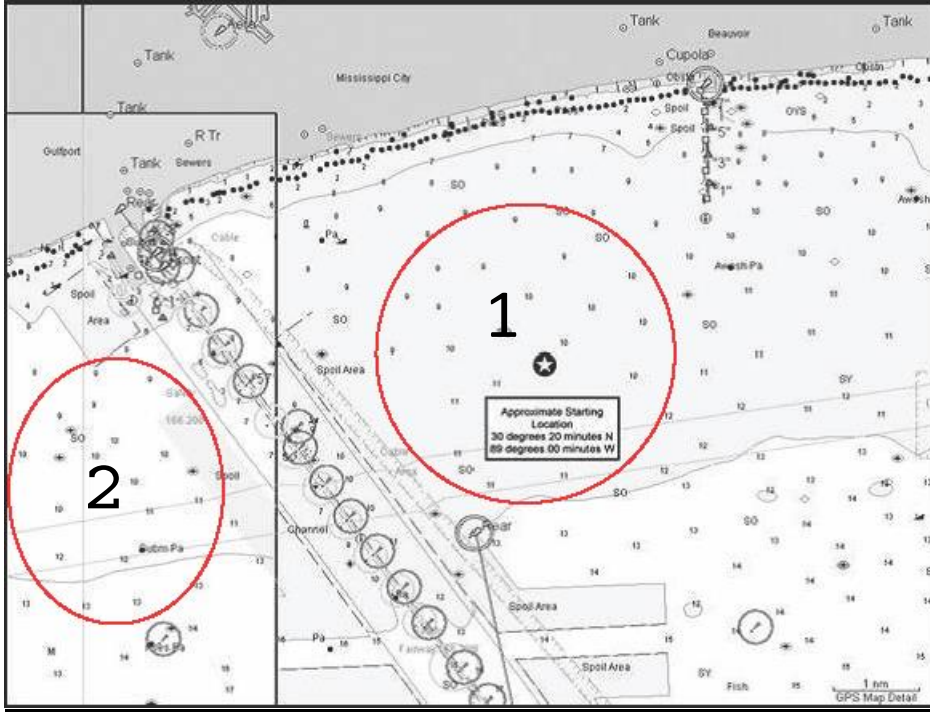
Trophies for Capdevielle will be awarded in compliance with GYA regulations. The trophies for one design fleets will be awarded for first place and may be awarded for additional places depending on the number of boats competing in the class.

## **21 SAFETY REGULATIONS AND RESPONSIBILITY**

- 21.1 All boats shall comply with United States Coast Guard and State safety equipment regulations. It is the responsibility of each skipper to determine if they should start a race or continue racing or if wearing a life jacket is appropriate. This does not supersede any class rules or regulations that may require wearing life jackets while on the water. A boat which retires from a race shall notify the Race Committee before leaving the racing area, or if that is not possible, at the first reasonable opportunity.
- 21.2 The Gulf Yachting Association and the Gulfport Yacht Club will not accept any responsibility for material damage or personal injury or death sustained in conjunction with or prior to, during, or after the regatta.
- 21.3 In the interest of safety or to avoid unreasonable delays, the race committee at its discretion may order a capsized boat rescued and scored "Did Not Finish".

**GOOD LUCK AND GOOD SAILING!!**

**EXHIBIT A:**



**EXHIBIT B:**



Course Descriptions:

CAPDEVIELLE

W2      START - 1 - OS - GATE - 1- OS - FINISH

W2.5    START - 1 - OS - GATE - 1- OS - GATE - 1

