



Sailing Instructions

Wickford Regatta 2019

Wickford Yacht Club is the Organizing Authority



1. Rules: The regatta will be governed by the rules as defined in the Racing Rules of Sailing and the class rules of the invited classes.

2. Notices to Competitors: Notices to competitors will be posted on the official notice board in the race office tent. There will be a temporary notice board at Wickford Yacht Club during the dinner on Saturday night.

3. Signals Made Ashore

3.1 Signals made ashore will be made orally from the vicinity of the race office tent. All official announcements will be posted on the official notice board. This changes RRS 90.2(c)

3.2 The intended start time for Sunday's races will be posted on the official notice board shortly after racing on Saturday, on the online notice board, and will also be announced at the regatta dinner.

4. Eligibility and Entry: The regatta is open to the **I-420, Laser, Laser Radial, RS Aero, F-18, 505, J/22, 29er, Waszp** and **UFO** classes. All entries shall conform to the eligibility rules of the respective classes.

5. Event Schedule

Friday	June 7, 2019
1500-1800	Check in and late registration
Saturday	June 8, 2019
0830-1000	Check in and late registration
1000	Competitors meeting in the vicinity of the race office tent.
1200	Warning signal first race. Subsequent races to follow immediately
Sunday	June 9, 2019
1000	Earliest possible start time. Subsequent races to follow immediately.
1500	No warning signal after this time.

6. Class Flags and Course Area Assignments

Class	Class Flag	Course Area
I-420	Red flag with white 420	Alpha
RS Aero	Numeral pennant #1 – white pennant with red circle	Alpha
Laser	White flag with red Laser logo	Alpha
Laser Radial	Numeral pennant #2 – blue pennant with white circle	Alpha
F-18	Pink F-18 on white background	Bravo
505	Numeral pennant #1 - white pennant with red circle	Bravo
J/22	Numeral pennant #2 – blue pennant with white circle	Bravo
29er	Numeral pennant #3 - red, white, blue vertical bands	Bravo
UFO	UFO Class Flag - white UFO on green background	Bravo
Waspz	Numeral pennant #4 - red with white cross	Bravo

7. Racing Area: See Appendix A.

8. Courses and Marks

8.1 See Appendix B for course diagrams and descriptions.

8.2 Marks 1 and 2 on courses **I** and **O** and **mark 1** on Course **W** will be 5' bright orange West Marine "tomatoes".

8.3 All **gate marks** and **mark 5** on the trapezoid courses will be 4' red/orange APS cylinders.

8.4 The **short weather mark, 1S**, on Bravo course will be a 4' "safety yellow" tomato.

8.5 The **first mark** on course **9** on Bravo course will be an orange 4' APS cylinder.

8.6 The **first mark** on course **U** on Bravo course will be a yellow 4' APS cylinder.

8.7 Offset marks on Bravo course will be 2' bright orange buoys.

8.8 No later than the warning signal the race committee signal boat will display the course designation for the next class to start.

8.9 When sailing course **W**, marks **WS** and **9** may not be in position and vice versa. In this situation the mark(s) not in position at the start of the leg may be set during the leg for another class. It is the competitor's responsibility to sail to the correct weather mark.

8.10 Courses **I**, **O** and **WL** will only be used on Alpha Course.

8.11 Courses **W**, **WS**, **U** and **9** will only be used on Bravo Course.

9. Start

9.1 Races will be started by using RRS 26 for all classes.

9.2 The starting line will be between a staff displaying orange flag on the signal boat and a 2' bright orange buoy on the port end of the starting line or an orange flag on the port end boat.

9.3 Boats whose warning signal has not been made shall avoid the starting area.

9.4 A boat starting later than 4 minutes after her starting signal will be scored Did Not Start.

9.5 The intended starting order will be announced at the competitors meeting on Saturday and will be posted on the notice board before 9:00 AM on Sunday. The starting order may be changed to minimize delays.

9.6 There may be a 2' faded orange buoy approximately in the middle the line on **Bravo** course. This buoy ranks as a mark and has a required side for the Waszp and UFO classes only and does not rank as a mark of the course for any other classes.

9.7 The Waszp and UFO classes **may** start together. This will be signaled by displaying the class flags of both classes with the warning signal and may be preceded by an announcement by loud hailer. If both classes start together the Waszp class must leave the mid line buoy to port and the UFOs must leave the mark to starboard. The starting line will be as described in **SI 9.2**.

9.8 There will be a 2' faded orange buoy above the starting line and slightly to the left of the signal boat. This buoy ranks as a mark and has a required side for the 505 class only and does not rank as a mark of the course for any other classes.

10. Change of the Next Leg of the Course: The distance and direction to the next mark may be changed +/- .2nm and a maximum of 10 degrees without any signal. The new mark shall be in place before any boat begins the leg. This changes **RRS 33**. Subsequent legs may be changed to maintain the course shape.

11. Finish

11.1 On courses **I** and **O** (trapezoid courses) the finish shall be between an orange flag on the finish boat and a 32" yellow APS buoy.

11.2 On course **WL** the finish shall be between an orange flag on the starboard side of the signal boat and a 2' bright orange buoy to be left to port.

11.3 On courses **W, WS, 9** and **U** the finish shall be between an orange flag on the starboard side of the signal boat and a 32" yellow APS buoy. There will be a 2' bright orange keep off buoy approximately 80' off the starboard side of the committee boat which must be left to starboard. The keep off buoy ranks as a mark, but may not be precisely on the finish line.

11.4 To best utilize racing time, boats not yet finished and deemed significantly behind boats already finished may be finished in place or scored the average place of all boats not yet finished.

12. Penalty System: For the F-18/F16, Waszp, UFO and 29er classes, RRS 44.1 is changed so that the Two-Turns Penalty is replaced by a One-Turn Penalty.

13. Time Limit and Target Times

Time limits and target times for the first boat are as follows:

<i>Class</i>	<i>Time limit</i>	<i>Target time</i>	<i>Time limit after the first finisher</i>
All Classes	80 minutes	40 minutes	15 minutes

14. Protests

14.1 Protest forms are available in the race office tent. Protests and requests for redress shall be delivered there within the appropriate time limit.

14.2 The protest time limit is 60 minutes after the last boat has finished the last race of the day in its course area and will be posted on the official notice board.

15. Scoring: The Low Point Scoring System, Appendix A of the racing rules will apply. There will be one throw-out if 4 or more races have been completed. Eight races are scheduled for all classes except 29er which may sail up to 10 races. One race shall be completed to constitute a series for all classes.

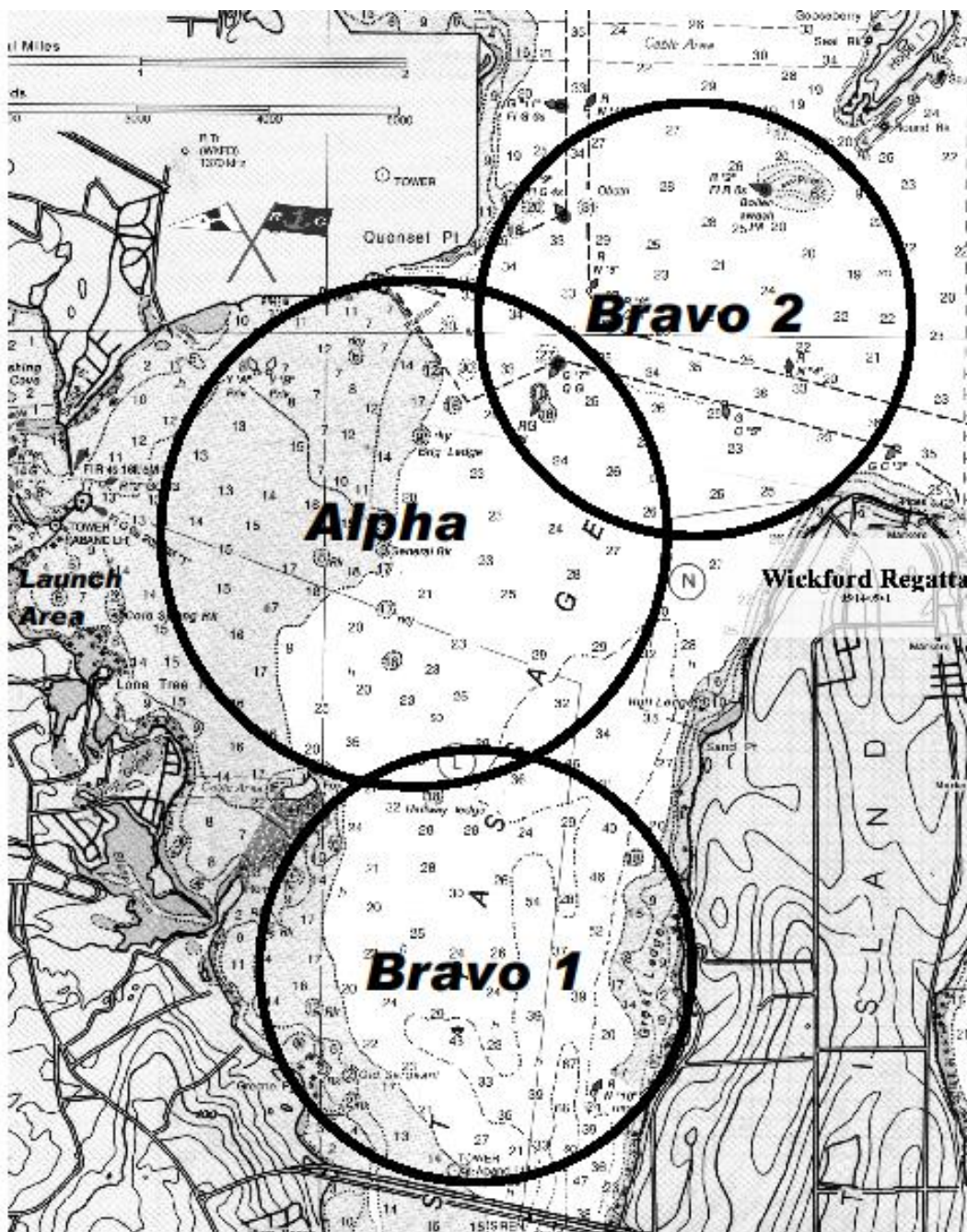
16. Safety: Each competitor will be responsible for wearing an USCG approved PFD at all times on the water. This changes RRS 40.

17. Prizes: Prizes will be awarded based upon the number of entries received by the end of advanced registration. 10 or more entries, top three. Fewer than 10, top two. Equal prizes will be awarded to both skipper and crew in double handed events.

18. Disclaimer of Liability: Competitors participate in the regatta entirely at their own risk. See rule RRS 4, Decision to Race. The organizing authority will not accept any liability for material damage or personal injury or death sustained in conjunction with or prior to, during, or after the regatta.

Appendix A

Course Areas



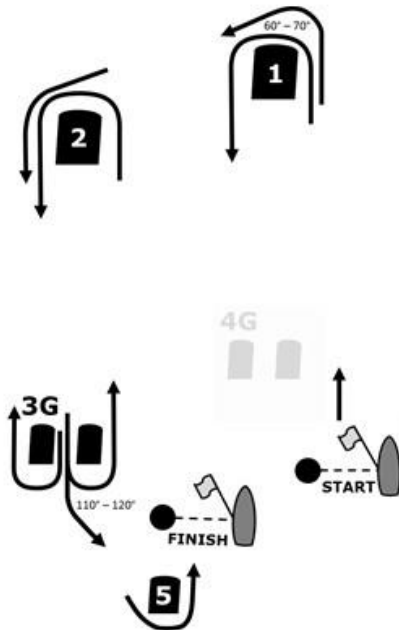
Tide Times and Heights

	Lo	Hi	Lo
Sat 8	6:36 AM 0.09'	12:46 PM 3.27'	6:30 PM 0.20'
Sun 9	6:59 AM 0.21'	1:46 PM 4.10'	7:02 PM 0.41'

Appendix B – Alpha Course Diagrams

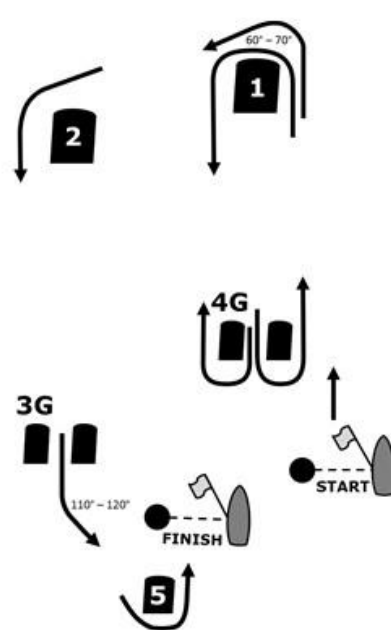
Course **O** Trapezoid Outer Loop

O = Start, 1, 2, 3G, 2, 3G, 5, Finish



Course **I** Trapezoid Inner Loop

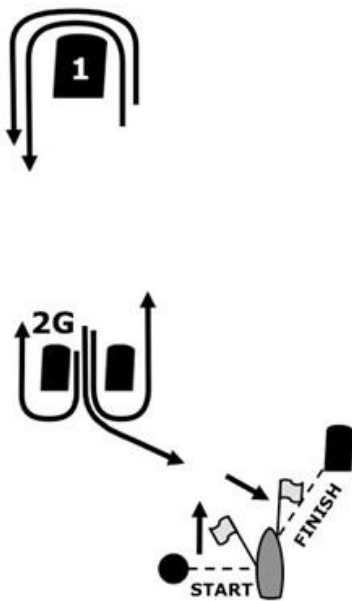
I = Start, 1, 4G, 1, 2, 3G, 5, Finish



Course **WL** Windward - Leeward

WL = Start, 1, 2G, 1, 2G, Finish

Alpha Course Only



Appendix B – Bravo Course Diagrams

Course "W" = Start, 1, "o", 2G, 1, "o", Finish

Course "WS" = Start, 1S, "o", 2G, 1S, "o", Finish

Course "9" = Start, 9, 2G, 9, Finish

Course "U" = Start, U, 2G, U, Finish

