



## BERMUDA INTERNATIONAL INVITATIONAL RACE WEEK

Royal Bermuda Yacht Club

April 27<sup>th</sup> - May 3<sup>rd</sup> 2019

### ORGANISING AUTHORITY (OA)

The regatta is organized by the Royal Bermuda Yacht Club (RBYC) with the endorsement of the Bermuda Sailing Association (BSA).

### SAILING INSTRUCTIONS (SIs)

The notation '[DP]' means that the penalty for a breach of that rule may, at the discretion of the protest committee, be less than disqualification. The notation '[NP]' means Rules that are not grounds for protest by a boat (This changes rule 60.1(a))

#### 1. RULES

- 1.1. The series will be governed by the 'rules' as defined in *The Racing Rules of Sailing (RRS)*.
- 1.2. The Bermuda Sailing Association National Prescriptions shall apply and may be found at [www.sailing.bm](http://www.sailing.bm).
- 1.3. If there is a conflict between the NoR and these SIs, the rules in these SIs will take precedence.

#### 2. NOTICES TO COMPETITORS

Notices to competitors will be posted on the official notice board located on the terrace at the RBYC.

#### 3. CHANGES TO SAILING INSTRUCTIONS

Any change to the SIs will be posted before 0930 on the day it will take effect, except that any change to the schedule of races will be posted by end of protest time limit on the day before it will take effect.

#### 4. SIGNALS MADE ASHORE

- 4.1. Signals made ashore will be displayed on the right yard-arm of the RBYC flagpole facing the water.
- 4.2. Flag AP displayed with one sound means: '1 minute' is replaced with 'not less than 60 minutes' in the race signal AP.

#### 5. SCHEDULE OF RACES

- 5.1. Dates of racing and the *maximum* number of races per day scheduled:

	Etchells		IOD		PHRF	
	Race Day	# Races	Race Day	# Races	Race Day	# Races
Sat Apr 27	Racing	4				
Sun Apr 28	Racing	4	Racing	3	Racing	3
Mon Apr 29			Racing	3		
Tue Apr 30			Racing	3		
Wed May 1			Spare			
Thur May 2			Racing	3		
Fri May 3			Racing	2		




The Race Officer, at their discretion, may choose to run additional races for either fleet to accommodate forecasted adverse weather conditions or to avoid falling behind on any series.

- 5.2. The Spare Race Day scheduled for Wednesday May 1<sup>st</sup> is provisional and will be used if less than six races have been completed before the end of racing on Tuesday April 30<sup>th</sup>. The number of races scheduled will be specified with the announcement to use the spare race day in accordance with SI 3.
- 5.3. The scheduled time of the first warning signal will be 10:55 hours.

- 5.4. To alert boats that a race will begin soon, an orange flag defining the starboard end of the starting line will be displayed with one sound two minutes before a warning signal is displayed.
- 5.5. No warning signal will be made after 16:00 each day, except on Friday May 3<sup>rd</sup> when no warning signal will be made after 15:00 hours.

## 6. CLASS FLAGS

Class flags will be:

Class	Insignia	Description
Etchells		Yellow Flag with black class insignia
IOD		Green Flag with white class insignia
PHRF		Foxtrot – White Flag with red diamond

## 7. RACE AREAS

Attachment #1 shows the location of the racing area for the Windward Leeward courses.

PHRF race areas may extend beyond this designated area to include the waters in and around the Great Sound and Hamilton Harbour.

## 8. THE COURSES

- 8.1. The diagram in Attachment #2 shows the standard Windward-Leeward courses, including the approximate angles between legs, the order in which marks are to be passed, and the side on which each mark is to be rounded.
- 8.2. No later than the warning signal, the Race Committee Signal Boat will display the course number, and the approximate compass bearing from the starting line to Mark 1.
- 8.3. For PHRF class only:
  - 8.3.1. additional Government/Combined Clubs marks may be used, and will be displayed accordingly before each race from the RC boat. See Attachment #4;
  - 8.3.2. If Course '8' is displayed a whiteboard will give a sequential series of numbers representing course marks or 'Combined Club' marks (followed by a 'P' or an 'S' representing to which side the mark shall be rounded (i.e. 'P' leave the mark to Port); Race Committee (RC) will attempt to broadcast "Course 8" courses on VHF 73 – failure to do so is not grounds for protest.
- 8.4. A leeward gate (two rounding marks) will be used. Boats shall sail between the gate marks from the direction of the previous mark and round either gate mark. If only one gate mark is set, boats shall round the single mark to port. The gate may be laid after the starting signal.
- 8.5. A windward offset mark will be used. The offset mark may be laid after the starting signal but will not be a mark of the course when a course change has been signaled.

## 9. MARKS

- 9.1. The starting mark will be an orange inflatable tetrahedron (ITB). Rounding marks will be yellow ITB. The offset mark will be an orange ball mark. New marks, as provided in SI 12 will be red ITB. The finishing mark will be an orange ITB.
- 9.2. For PHRF additional marks, as per Attachment #4, may also be used.

## 10. AREAS THAT ARE OBSTRUCTIONS

There are no designated obstructions in the racing area.

## 11. THE START

- 11.1. Races will be started using RRS 26.
- 11.2. The starting line will be between a staff displaying an orange flag on the RC Signal Boat at the starboard end and the course side of the port end starting mark.
- 11.3. A boat that does not start within 4 minutes after her starting signal will be scored Did Not Start without a hearing. This changes RRS A4 and A5.

- 11.4. As a courtesy to competitors, the anticipated class starting order may be indicated on the course board in descending order and may be announced on VHF 73.
- 11.5. When Code Flag “W” is displayed with the warning signal, it will mean that spinnakers shall not be hoisted by that class during that race.
- 11.6. The RC may attempt to notify any boat that breaks RRS 29.1 by broadcasting their sail number on VHF channel 73. The following will not be cause for redress: failure of a boat to receive the recall broadcast; a boat’s position in the sequence of broadcast numbers; or failure of the RC to hail a boat’s number. This changes RRS 62.1(a).
- 11.7. The RC may deploy a ‘Keep Off’ buoy astern of the RC Signal Boat.

---

## 12. CHANGE OF THE NEXT LEG OF THE COURSE

- 12.1. To change the next leg of the course, the RC will lay a new mark (or move the finishing line) and remove the original mark as soon as practicable. When in a subsequent change a new mark is replaced, it will be replaced by an original mark. When there is a change of course prior to the start, the RC will signal the change with the warning signal of the class starting in accordance with SI 11.1 but without repetitive sound signals.

---

## 13. THE FINISH

- 13.1. The “on-course” finishing line will be between a staff displaying a blue flag on the RC Finish Line Boat at the port end and the course side of the starboard end finishing mark.
- 13.2. For PHRF if “Course 8” is displayed the Finish Line will be posted as “F” (see 13.1) or “R” (see 13.3) On the ‘Course Board’ an RBYC Finish will be displayed as “R”.
- 13.3. For PHRF class there may be a Finish off the RBYC in Hamilton Harbour for the last race of the day. On the ‘Course Board’ an RBYC Finish will be displayed as “R”. For an “RBYC Finish”, the finishing line will be a transit line using the orange triangle on the roof of the RBYC and the RYBC flagpole, with RBYC being the port end of the line.

---

## 14. PENALTY SYSTEM

The Two-Turns Penalty is replaced by a One-Turn Penalty for all violations of Part 2 except for violations that occur within the Zone around a mark, other than a starting mark, and where 44.1(b) applies. This changes RRS 44.1.

---

## 15. TIME LIMITS AND TARGET TIMES

- 15.1. All times will be taken from GPS.
- 15.2. Time limits for each race will be 90 minutes. If no boat has passed Mark 1 within 30 minutes the race will be abandoned.
- 15.3. The target time for each race will be 45 minutes. Failure to meet the target time will not be grounds for redress. This changes RRS 62.1(a).
- 15.4. Etchells and IODs failing to finish within 10 minutes after the first boat sails the course and finishes will be scored Did Not Finish without a hearing. This changes RRS 35, A4 and A5.

---

## 16. PROTESTS AND REQUESTS FOR REDRESS

- 16.1. Protest forms are available at the RBYC located in an envelope on the official notice board. Completed protest forms shall be filed with the protest committee desk not later than 60 minutes after the docking of the RC vessel. The end of Protest time limit will be posted on the official notice board.
- 16.2. The same protest time limit applies to all Protests by the RC or International Jury about incidents they observe in the racing area and for Requests for Redress.
- 16.3. A notice will be posted on the official notice board as soon as possible after receipt of Protests to inform competitors there is a hearing in which they are parties to a Protest or named as witnesses.
- 16.4. The posting of hearing notices shall be considered notices as required by RRS 61 and 62.2.
- 16.5. On the last day of racing a request for reopening a hearing shall be delivered:
  - 16.5.1. within the Protest time limit if the requesting party was informed of the decision on the previous scheduled day;
  - 16.5.2. no later than 30 minutes after the party requesting reopening was informed of the decision on that day.
- 16.6. On the last day of racing a request for redress based on a jury decision shall be delivered no later than 30 minutes after the decision was posted. This changes RRS 62.2.
- 16.7. Decisions of the International Jury will be final as provided in RRS 70.5.

---

## 17. SCORING

- 17.1. For Etchells and IOD classes 3 races are required to be completed to constitute a series; for the PHRF class 1 race constitutes a series.
- 17.2. When fewer than 5 races have been completed, a boat's series score will be the total of her race scores.
- 17.3. When from 5 to 9 races have been completed, a boat's series score will be the total of her race scores excluding her worst score.
- 17.4. When 10 or more races have been completed, a boat's series score will be the total of her race scores excluding her two worst scores.
- 17.5. Excluded scores for the IOD Overall series will be the worst scores regardless of whether they are in the 'A' or 'B' series and regardless of whether either of these series is valid.
- 17.6. Scores for the IOD Class will accrue to the skipper, not the boat.

---

## 18. SAFETY REGULATIONS

- 18.1. [DP] Competitors shall check in each day with the RC signal boat by sailing on starboard tack past the stern of the boat and hailing their sail number until they are acknowledged.
- 18.2. [DP] A boat that retires from a race shall notify the RC as soon as possible.

---

## 19. REPLACEMENT OF CREW OR EQUIPMENT

- 19.1. [DP] Substitution of competitors will not be allowed without prior written approval of the RC.
- 19.2. [DP] Substitution of damaged or lost equipment will not be allowed unless authorized by the RC. Requests for substitution shall be made to the RC at the first reasonable opportunity.

---

## 20. EQUIPMENT AND MEASUREMENT CHECKS

On the water, a boat can be instructed by a member of the RC to proceed immediately to a designated area for inspection.

---

## 21. EVENT ADVERTISING

[DP] Boats shall display event advertising supplied by the OA. If this rule is broken, World Sailing Regulation 20.9.2 applies.

---

## 22. OFFICIAL BOATS

Official RC boats shall be described to competitors at the competitor briefing, and will fly a blue or yellow RC flag.

---

## 23. SUPPORT BOATS

[DP] Team leaders, coaches and other support persons shall stay outside areas where boats are racing from the time of the preparatory signal for the first class to start until all boats have finished or retired or the RC signals a postponement, general recall or abandonment.

---

## 24. TRASH DISPOSAL

Trash may be placed aboard support or official boats.

---

## 25. HAUL-OUT RESTRICTIONS

Boats shall not be hauled out during the regatta except with written permission of the RC.

---

## 26. DIVING EQUIPMENT AND PLASTIC POOLS

[DP] Underwater breathing apparatus and plastic pools or their equivalent shall not be used around keelboats between the preparatory signal of the first race and the end of the regatta.

---

## 27. RADIO COMMUNICATION

- 27.1. Except in an emergency, a boat that is racing shall not make voice or data transmissions and shall not receive voice or data communication that is not available to all boats.
- 27.2. VHF Channel 73 will be used by the RC for communication purposes.
- 27.3. Support boats are required to monitor VHF Channel 73 to render assistance in an emergency as requested by the RC.

---

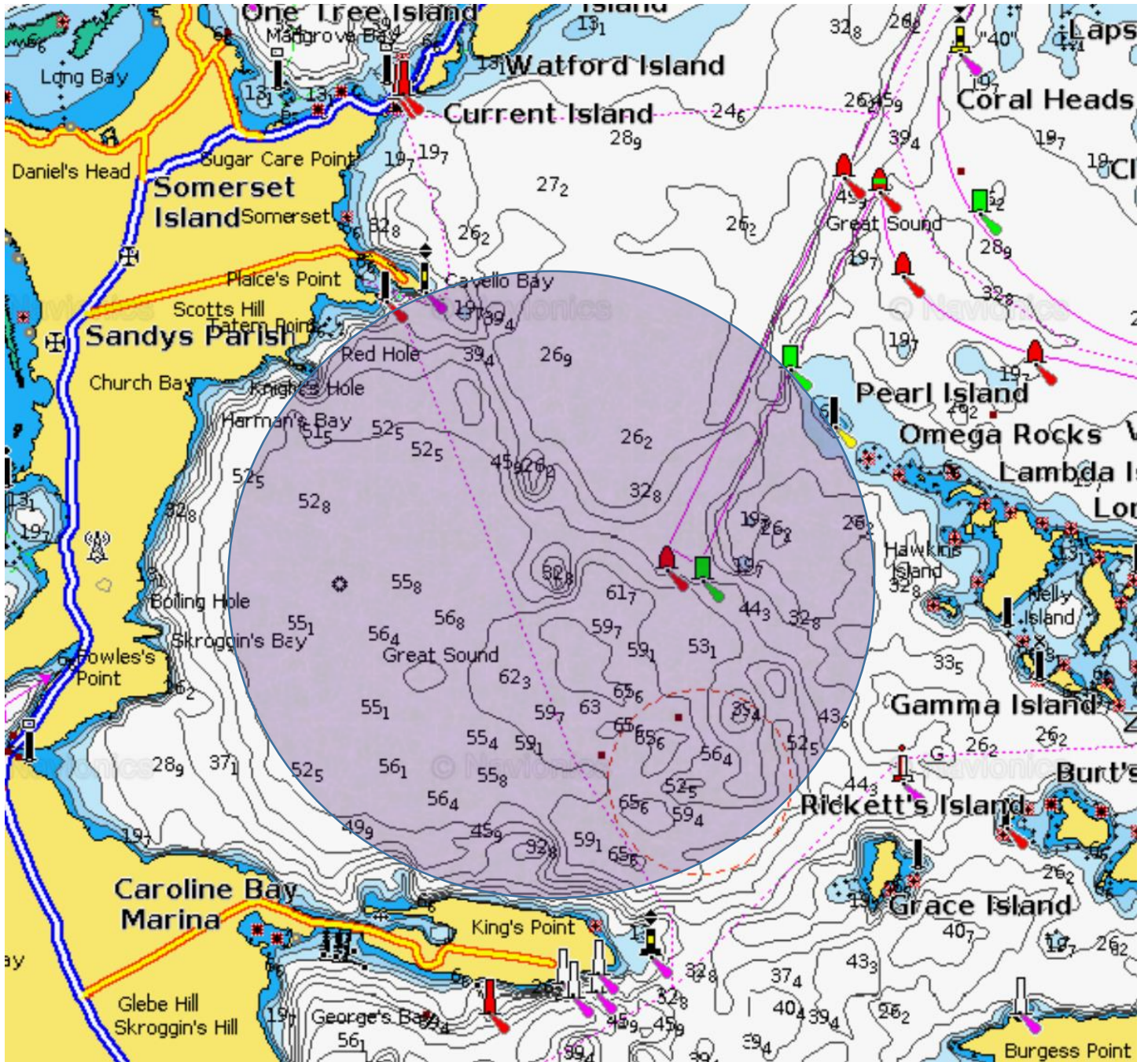
## 28. DISCLAIMER OF LIABILITY

Competitors participate in the regatta entirely at their own risk and responsibility. See RRS 4, Decision to Race. The OA will not accept any liability for material damage or personal injury or death sustained in conjunction with or prior to, during, or after the regatta.

## **29. INSURANCE**

---

Each participating boat shall be insured with valid third-party liability insurance with a minimum cover of USD/BMD \$500,000 per incident or the equivalent.





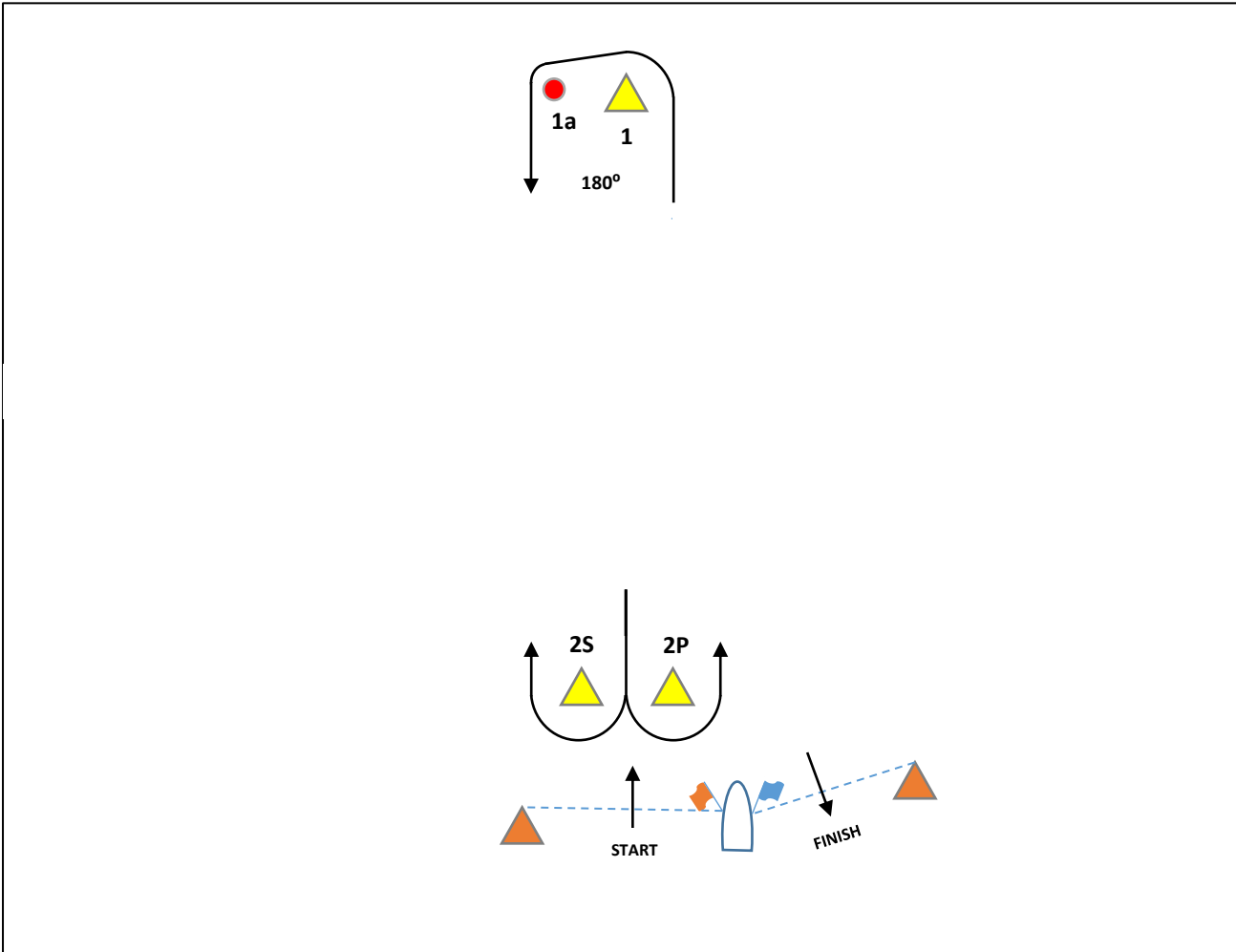
ATTACHMENT #2

COURSE 2 – START, 1, 1a, FINISH

COURSE 4 – START, 1, 1a, 2P/2S, 1, 1a, FINISH

COURSE 6 – START, 1, 1a, 2P/2S, 1, 1a, 2P/2S, 1, 1a, FINISH

COURSE 8 – See Course Board & Attachment #4 for details



**1. ALLOCATION OF BOATS, SAILS AND EQUIPMENT**

- 1.1 All equipment provided with the boat for sailing purposes shall be carried while afloat. Unless the Bermuda International One Design Association gives permission, no boat shall be modified or caused to be modified except that:
- a) A compass may be tied or taped to the hull or spars.
  - b) Wind indicators, including yarn or thread, may be tied or taped anywhere on the boat.
  - c) Hulls (above the waterline only) and decks, sails and equipment may be cleaned only with non-abrasive materials.
  - d) Adhesive tape may be used anywhere above the water line but must be removed promptly at the end of each day's racing.
  - e) All fittings or equipment designed to be adjusted in accordance with class rules may be adjusted within the limits provided, except that shrouds, forestay and jumper stays shall not be adjusted.
- 1.2 Rule 62.1 is changed by adding section:
- (e) Physical damage not falling within rule 62.1 (b) which was due to defective supplied equipment and which a reasonably competent crew would not have been able to avoid or promptly repair.
- 1.3 Boats together with their mainsails and jibs will be exchanged in accordance with a draw, which will be held by the BCA prior to the first race. Paragraph 1.4 may modify this. Each skipper will be allocated a spinnaker and will use that spinnaker for the entire regatta.
- 1.4 Boats will be exchanged on a daily basis and will not be exchanged between back-to-back races except when spare boats are needed to replace scheduled boats.
- 1.5 If a competitor is required to sail a boat other than that originally scheduled, this will not be grounds for redress. This changes rule 62.1(a).

**2 SAIL RESTRICTIONS IN CASE OF STRONG WINDS**

When Flag 'W' is displayed with the warning signal, spinnakers shall not be hoisted during that race.

**3 DAMAGE REPORTS AND PENALTIES**

- 3.1 Submission of a damage report after each day of racing is mandatory.
- 3.2 The Damage Report will comprise a declaration on a form provided by the BCA to be signed after every racing day by each skipper, regardless of whether or not there is damage, and returned to the Protest desk not later than the time posted for the submission of protests.  
On this form each skipper shall EITHER declare that the boat he sailed bears no damage or performance-impairing condition, OR, fully declare to the best of his knowledge all damage or performance-impairing conditions including contact, however minor. The penalty for noncompliance will be at the discretion of the jury.
- 3.3 If an untimely or inaccurate declaration or non-declaration causes the BCA to withdraw a boat from competition for repairs, and if there is no replacement boat, the skipper who last sailed the affected boat shall not compete in any further races until that boat or a replacement boat becomes available and that skipper will be scored DNC for those races not sailed.
- 3.4 The rotation sequence will be adjusted accordingly by the BCA and no redress for such adjustment will be granted to any skipper. This changes RRS 62.1(a).  
Should this replacement require a Bermuda skipper to sail his own boat, this replacement shall not be grounds for redress. This changes RRS 62.1(a).
- 3.5 If there is un-reported or incorrectly reported damage, it shall be subject to rule 3.3 of this Attachment.
- 3.6 If there is reported damage or performance-impairing conditions, it shall be subject to rule 4.5 of this Appendix
- 3.7 The authority for BCA decisions will be the BCA Technical Chair for the event.



#### **4 SPARE BOATS AND DAMAGE**

- 4.1 The suitability of a boat to sail will be determined by the BCA at its sole discretion.
- 4.2 As un-sailable boats are repaired, they will be reinstated into the original schedule.
- 4.3 If boats are un-sailable:
  - 4.3.1 Competitors already governed by rule 3.3 of this Attachment will remain so governed.
  - 4.3.2 All competitors who are scheduled to sail boats that are un-sailable, will drop out of that day's racing schedule until the original boat is repaired.
  - 4.3.3 Competitors prevented from racing, through no fault of their own, will automatically receive average points redress for each race missed in accordance with rule 5 of this Attachment.

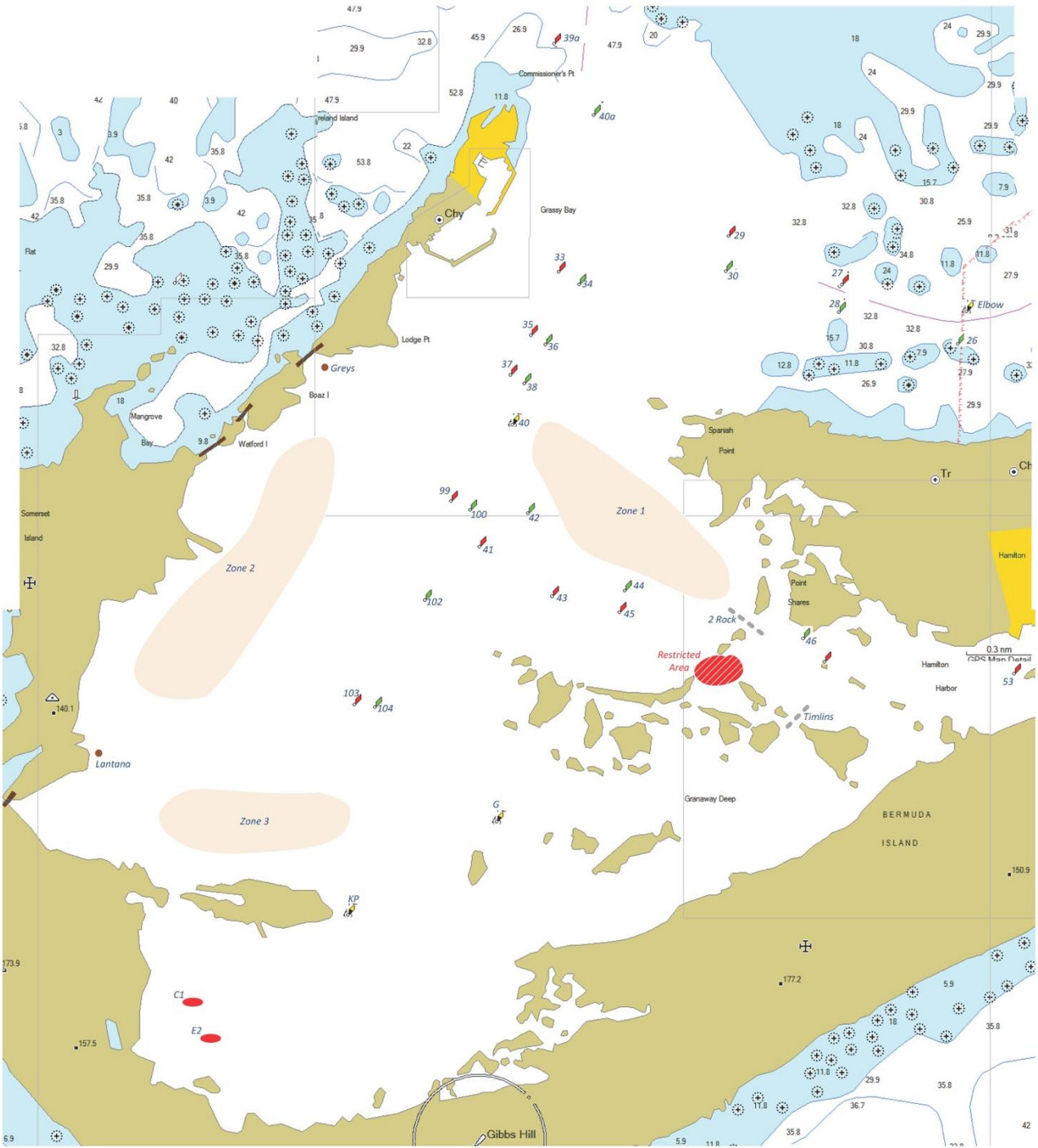
#### **5 COMPUTED SCORES**

If redress is awarded in any race or races using average points, the average will be computed using all the races sailed in both Series "A" and "B" except the race(s) in question.

#### **6 OTHER RESTRICTIONS**

- 6.1 Each boat will be provided with 1 mainsail and 1 jib, which will remain with that boat throughout the regatta unless written permission to the contrary is given by the IOD Class.
- 6.2 Shrouds above the lower bottle screws may not be used at any time to support crew weight.
- 6.3 All equipment provided with the boat for the purposes of sailing or safety shall be carried while afloat.

ATTACHMENT #4 – PHRF ADDITIONAL MARKS



\*\*\*NOT FOR NAVIGATION\*\*\*