



# GBCA Texas Race Week

## Texas Offshore Racing Circuit

Gulf of Mexico - Galveston

June 6-8, 2019

### Amendment #1

## Sailing Instructions

### 1. Rules

The regatta will be governed by the *rules* as defined in the current *Racing Rules of Sailing* (RRS), including US Sailing Prescriptions, the International Rules for Prevention of Collision at Sea (COLREGS), Offshore Racing Congress (ORC) rules, the Notice of Race and these Sailing Instructions. **Any amendments are show in red.**

- Sailing Instruction 2 modifies RRS 63.1
- Sailing Instructions 7 & 8 modifies RRS 29
- Sailing Instructions 8 & 15.3 modifies RRS 62.1(a)
- Sailing Instruction 9 modifies RRS 32
- Sailing Instruction 10 modifies RRS 28
- Sailing Instruction 11 modifies RRS 35
- Sailing Instruction 12 modifies RRS 61
- Sailing Instruction 13 modifies RRS A2
- Sailing Instruction 15 modifies RRS 77 & G4
- Sailing Instruction 17 modifies RRS 62.1(a)

### 2. Owner's and Skippers Responsibilities

- 2.1 The safety of a yacht and her crew is the sole and inescapable responsibility of the skipper, who must ensure that the yacht is fully found, thoroughly seaworthy and manned by an experienced crew. The skipper is responsible to be fully knowledgeable of all the requirements and skills of offshore sailing.
- 2.2 It is the sole and inescapable responsibility of the skipper to decide whether to start or to continue a race.
- 2.3 The skipper shall ensure that all necessary equipment for safe offshore racing is carried on board and that all crew are instructed in its proper use.
- 2.4 Yachts MUST obey all maritime RULES OF THE ROAD when encountering vessels not racing. This is especially important when dealing with ship and other commercial traffic. Special attention is given to the Preamble of Part 2 of the RRS. Serious violation of applicable regulations shall be cause for disqualification by the Race Committee without hearing. This modifies Rule 63.1
- 2.5 Special attention is called to the shoal area that exists along the south side of the Galveston jetties. Skippers should have the most recent charts of the racing area and all Notice to Mariners.

### 3. Notices to Competitors

Official notices to competitors will be posted online at:

[http://www.regattanetwork.com/event/18049#\\_newsroom](http://www.regattanetwork.com/event/18049#_newsroom)

Any written change to the sailing instructions, schedule of races or notice of race will be posted before 20:00 the day before it will take effect. Any oral change will be communicated to each boat via VHF radio channel 69 at Check In.

### 4. Race Schedule

The warning signals for the daily races will not be before 11:00 hours.

## **5. Race Area and Courses**

The race area will be the Bolivar Roads, Galveston Jetties and the waters of the Gulf of Mexico south of Galveston Island. The course to be sailed by class will be signaled by numeral flag and announced via VHF channel 69. Fixed Marks, Courses and Class Flags are described in Appendix A.

## **6. Check In**

Before the warning signal of each race, all yachts intending to race shall contact the Race Committee on VHF Channel 69 and hail the boat's name (or sail number) and the number of persons on board, until acknowledged by the Race Committee.

## **7. The Start**

- 7.1 The starting line will be in the Bolivar Roads area between HSC Marker #11 on the Port side and an orange flag or shape displayed on the south jetty shore or a signal boat on the Starboard side.
- 7.2 Boats whose preparatory signal has not been made shall keep clear of the starting area and of all boats whose preparatory signal has been made.
- 7.3 Any class subjected to a General Recall may be re-started after the last scheduled start for that race. This modifies RRS 29.2.
- 7.4 Yachts starting later than fifteen (15) minutes after their starting signal will be allowed only at the discretion of the Race Committee.
- 7.5 Yachts shall avoid commercial ship channel traffic.
- 7.6 Yachts shall keep Channel Marker 5A to Starboard when entering into the Gulf of Mexico.

## **8. STARTING SIGNALS**

- 8.1 The course to be sailed will be designated by a numeral pennant and announced on VHF Channel 69. It is likely that spinnaker, non-spinnaker and cruising classes will sail different courses.
- 8.2 Starting order of classes may vary on conditions and courses.
- 8.3 The Race Committee may give a countdown on VHF channel 69 prior to the raising/lowering of each signal flag.
- 8.4 As a courtesy, the Race Committee may attempt to hail recalled yachts. Failure of the race committee to make this broadcast, failure of a boat to receive the broadcast, a boat's order in that broadcast or the promptness of the broadcast shall not be subject to redress. This modifies RRS 29 and RRS 62.1(a).

## **9. Shorten Course**

- 9.1 If the Race Committee displays the "S" code flag with one or more class flags, the shortened course applies only to those classes.
- 9.2 If the "S" code flag is flown alone, all classes will sail the shortened course. This modifies RRS 32.

## **10. The Finish**

- 10.1 The Finish Line for all courses will be in the Bolivar Roads area between an orange flag or shape displayed from shore or a signal boat on the port end and HSC Marker #11 on the starboard end.
- 10.2 Yachts shall avoid commercial ship channel traffic.
- 10.3 Yachts shall keep Channel Marker 5A to port when entering the Jetties.
- 10.4 Finishing Procedures: In the event that a yacht cannot reach the Race Committee by VHF or the Race Committee is not on station, she shall continue to the finish line, take her own finish time and report it to the Race Committee as soon as possible. This modifies RRS 28

## 11. Time Limit

Time limit for each race shall be six (6) hours from the class start times. Yachts exceeding the time limit will be scored Did Not Finish (DNF). This modifies RRS 35.

## 12. Protests

RRS Appendix T – Arbitration – will be in effect. Intent to protest shall be communicated to the Race Committee by VHF channel 69 before leaving the race area and must be filed in writing prior to 19:00 hours at the after-race social location for that day. The protest hearing may be held at a later date. This modifies RRS 61.

## 13. Scoring

The Low Point system, RRS Appendix A will apply. One race constitutes a series. There will be no throw-outs, except for purposes of Texas Navy Cup scoring. This modifies RRS A2.

Time on Time (ToT) scoring will be used. For PHRF A is a fixed factor of 650. B can vary between 480 and 600. For this event, a B factor of 550 will be used. Corrected Time = Time Correction Factor x Elapsed Time.

For ORC classes, the Triple Number ToT scoring options will be used, with the Low, Medium, High or single number rating choice announced at or prior to the Warning Signal. Note that ORC rule 403.4 gives the RC the option of re-scoring if there has been a “significant change in the weather conditions.”

## 14. Texas Offshore Racing Circuit (TORC) - Texas Navy Cup

The Texas Navy Cup will be awarded to the Spinnaker Class yacht with the lowest Navy Cup Fleet score combining two races of the GBCA Texas Race Week and the lowest Navy Cup Fleet score of the LYC Heald Bank race and the HYC Offshore Freeport Race. The Navy Cup Fleet consists only of those Spinnaker Class yachts that participated in all three regattas. Yachts that did not participate in the LYC or HYC races are not eligible for the purposes of Texas Navy Cup scoring.

## 15. Sail Numbers

Boats shall carry USSA, class, or hull numbers on mainsails, spinnakers, and each overlapping headsail having a luff perpendicular exceeding 130% of the base of the fore triangle. These sail numbers shall correspond to the sail numbers listed on the scratch sheet, unless different numbers or identification are approved by the Race Committee. Notification of such approval will be posted before 08:00 on the day approval is given at:

[http://www.regattanetwork.com/clubmgmt/applet\\_notice\\_board.php?regatta\\_id=16844](http://www.regattanetwork.com/clubmgmt/applet_notice_board.php?regatta_id=16844)

This is not subject to protest. This modifies RRS 77 & Append G4.

## 16. Safety

16.1 A boat that retires from a race prior to finishing shall notify the Race Committee as soon as practicable on VHF channel 69. If radio communication is unavailable, call the Race Committee phone number: 713-591-8115 and leave a message.

16.2 Attention is called to RRS 4: Decision to Race, “The responsibility for a boat’s decision to participate in a race or to continue *racing* is hers alone.”

## 17. Communication

17.1 Radio communication will be conducted on VHF channel 69.

17.2 The Race Committee will attempt to monitor and may make courtesy announcements on VHF

channel 69. The failure of the Race Committee to make announcements or the manner in which announcements are made will not be grounds for redress. This modifies RRS 62.1(a).

- 17.3 If a weather-related postponement is required it will be announced at 2 hours prior to the warning signal on VHF channel 69.

## Class Designations

CLASS	FLAG
ORC Spinnaker	Pink
PHRF Non-Spinnaker	Blue
GBCA Cruising Class	Orange
Multihull	Green

## Appendix A

### Marks

Mark	Latitude	Longitude
Galveston Jetty HSC 11	N 29° 20.53'	W 094° 44.47'
Galveston Jetty HSC 5A	N 29° 19.67'	W 094° 41.34'
GA 151 A	N 29° 13.53'	W 094° 34.69'
GA 210	N 29° 07.90'	W 094° 36.39'
GA.187L-A	N 29° 08.52'	W 094° 47.83'
East Beach Set Orange Tetrahedron "O-EB"	N 29° 19.29 (approx.)	W 094° 43.70' (approx.)
East Beach W/L 'Variable' Yellow Tetrahedron "Y-EB"	1-2 miles to windward of Set Tetrahedron "O" * (or leeward of "O", if northerly breeze exists)	
Pleasure Pier Set Orange Tetrahedron "O-PP"	N 29° 16.93' (approx.)	W 094° 47.31' (approx.)
Pleasure Pier W/L 'Variable' Yellow Tetrahedron "Y-PP"	1-2 miles to windward of Set Tetrahedron "O" * (or leeward of "O", if northerly breeze exists)	

### Courses

Course #	Mark	Distance (nm)	Bearing (°)	Rounding
<u>1</u>	Start @ HSC 11	0.00		Port
	HSC 5A	2.94	104	Starboard
	"O"	5.93(PP) / 2.15 (EB)	239(PP) / 257 (EB)	Port
	"Y"	1.00 - 2.00	Windward (*)	Port
	HSC 5A	TBD	TBD	Port
	Finish @ HSC 11	2.94	284	Starboard

Course #	Mark	Distance (nm)	Bearing (°)	Rounding
<u>2</u>	Start @ HSC 11	0.00		Port
	HSC 5A	2.94	104	Starboard
	"O"	5.93(PP) / 2.15 (EB)	239(PP) / 257 (EB)	Port
	"Y"	1.00 - 2.00	Windward (*)	Port
	"O"	1.00 - 2.00	Leeward (*)	Port
	"Y"	1.00 - 2.00	Windward (*)	Port
	HSC 5A	TBD	TBD	Port
	Finish @ HSC 11	2.94	284	Starboard

Course #	Mark	Distance (nm)	Bearing (°)	Rounding
<u>3</u>	Start @ HSC 11	0.00		Port
	HSC 5A	2.94	104	Starboard
	"O"	5.93(PP) / 2.15 (EB)	239(PP) / 257 (EB)	Port
	"Y"	1.00 - 2.00	Windward (*)	Port
	"O"	1.00 - 2.00	Leeward (*)	Port
	"Y"	1.00 - 2.00	Windward (*)	Port
	"O"	1.00 - 2.00	Leeward (*)	Port
	"Y"	1.00 - 2.00	Windward (*)	Port
	HSC 5A	TBD	TBD	Port
	Finish @ HSC 11	2.94	284	Starboard

Course #	Mark	Distance (nm)	Bearing (°)	Rounding
<u>4</u>	Start @ HSC 11	0.00		Port
	HSC 5A	2.94	108	Starboard
	GA 151A	8.40	137	Port
	HSC 5A	8.40	317	Port
	Finish @ HSC 11	2.94	288	Starboard
<b>Total</b>		<b>22.68</b>		

Course #	Mark	Distance (nm)	Bearing (°)	Rounding
<u>5</u>	Start @ HSC 11	0.00		Port
	HSC 5A	2.94	108	Starboard
	GA 210	12.49	160	Port
	HSC 5A	12.49	340	Port
	Finish @ HSC 11	2.94	288	Starboard
<b>Total</b>		<b>30.86</b>		

Course #	Mark	Distance (nm)	Bearing (°)	Rounding
<u>6</u>	Start @ HSC 11	0.00		Port
	HSC 5A	2.94	108	Starboard
	GA 187 "L-A"	12.5	207	Port
	HSC 5A	12.5	027	Port
	Finish @ HSC 11	2.94	284	Starboard
<b>Total</b>		<b>30.88</b>		

Course #	Mark	Distance (nm)	Bearing (°)	Rounding
<u>7</u>	Start @ HSC 11	0.00		Port
	HSC 5A	2.94	108	Starboard
	GA 210	12.49	160	Port
	GA 151A	5.82	015	Port
	HSC 5A	8.38	317	Port
	Finish @ HSC 11	2.94	288	Starboard
<b>Total</b>		<b>32.57</b>		

Course #	Mark	Distance (nm)	Bearing (°)	Rounding
<u>8</u>	Start @ HSC 11	0.00		Port
	HSC 5A	2.94	108	Starboard
	GA 151A	8.38	137	Starboard
	GA 210	5.82	195	Starboard
	HSC 5A	12.49	340	Port
	Finish @ HSC 11	2.94	288	Starboard
<b>Total</b>		<b>32.57</b>		

Thanks to all our Sponsors!

# GBCA 2019 SPONSORS



CRUZAN RUM



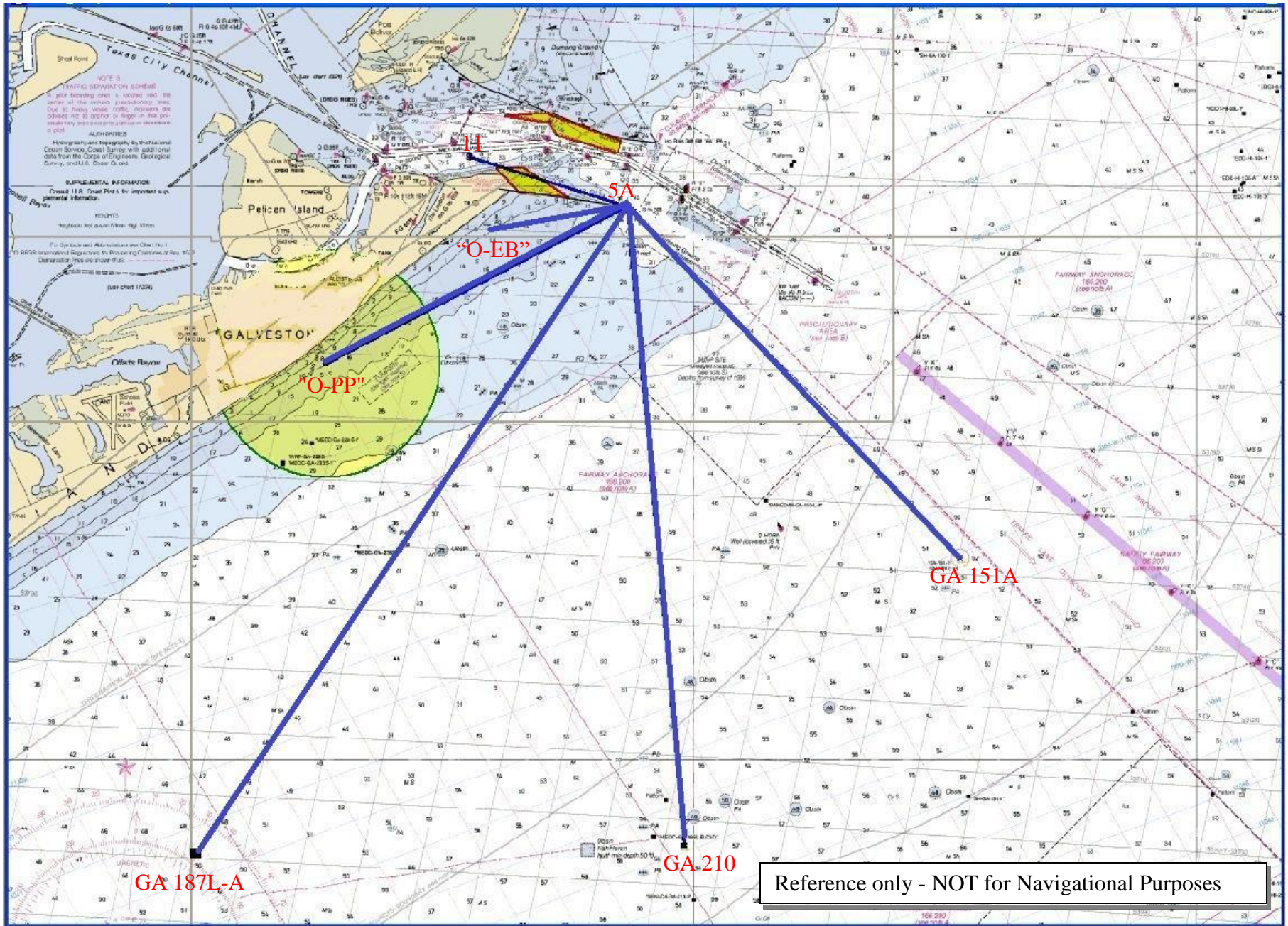
## GOLD SPONSORS



G&C SAILMAKERS











**“GA 151 A” Approximate Position: N 29° 13.53’ W 94° 34.69’**

**“GA 210” Approximate Position: N 29<sup>0</sup> 07.90’ W 094<sup>0</sup> 36.39’**



**"GA 187L-A" Approximate Position: N 29° 08.52' W 094° 47.83'**