



*Waikiki Yacht Club*  
1599 Ala Moana Blvd  
Honolulu, Hawaii, 96814  
808.995.4405 | [regatta@waikikiyachtclub.com](mailto:regatta@waikikiyachtclub.com)

## **Sailing Instructions**

### **Waikiki Opening Day Beer Can Bash**

**February 23, 2019**

**1. RULES:**

1.1. The regatta will be governed by the rules as defined in the Racing Rules of Sailing (RRS), the prescriptions of US SAILING, pertinent Class/Fleet Rules, by the Waikiki Yacht Club Standing Sailing Instructions, the Notice of Race and these Sailing Instructions.

1.2. The RRS are changed as follows:

1.2.1. Rule 52 - The use of powered winches is authorized.

1.2.2. Rule 55 is changed to allow the use of banding for safety purposes

1.2.3. Rule 63.2 and 63.4 do not apply

**2. NOTICES TO COMPETITORS:** Notices to competitors will be posted on the official notice board located in the WYC on the regatta board.

**3. CHANGES TO THE SAILING INSTRUCTIONS:** Any change to the sailing instructions will be posted before 0900 on the day it will take effect, except that any change to the schedule of races will be posted by 2000 on the day before it will take effect.

**4. SIGNALS MADE ASHORE:** Signals made ashore will be displayed from the WYC flagpole

**5. SCHEDULE OF RACING:**

5.1. The first warning will be at 1325 Saturday February 23, 2019. Subsequent starts will be in five minute intervals or longer in the following order: Cruising, A / B, X, Multi, Cal 20. In the event that there are not enough boats to constitute a class, the subsequent fleet will start in its place with the remaining starts following in the stated order

5.2. Number of races: There will be one race sailed per class except for Cal 20s which will sail up to 3 races.

5.3. Racing may be postponed until all entered boats have received the "Blessing of the Fleet" from the Opening Day VIP Boat and have arrived in the starting area

**6. CLASS FLAGS**

PH X – Pink with X

PH A & B – Black with 1

Cruising – Light Green with C

Cal 20 – Black Flag with 20

Multi – Multi Class Flag

**7. RACING AREA:** The attachment shows the location of the racing area

**8. THE COURSES:**

8.1. Cruiser, A/ B, X and Multi: Start – Mark1 to Starboard –DH buoy to Port - HH buoy to Starboard – Finish at G1 with race committee boat with orange flag. Course length is approximately 8 nm.

8.2. Cal 20s:

Course 1 – Mark 1 to port – Finish downwind (signaled by #1 pennant)

Course 2 - Mark 1 to port – Starting Pin to Port Mark 1 to port – Finish downwind (signaled by #2 pennant)

**9. THE START & FINISH:**

9.1 The starting line will be between two yellow inflatable tetrahedrons.

9.2 The finishing line for Cruise, A/B, X and Multi will be between G1 and the race committee boat with orange flag.

9.3 The finishing line for Cal20 will be between the two yellow inflatable tetrahedrons used as starting line. Downwind finish.

10. **TIME LIMIT:** The time limit for the races will be one and a half hour for the first boat to finish.

11. **PROTESTS:** Protests shall be delivered to WYC within 45 min. after the race committee boat docks. The protest time limit and a list of protests received will be posted on the notice board. Hearings will be held as soon as possible after racing at WYC.

12. **SCORING:** Yachts will be scored in a class under PHRF system as endorsed by HYRA. Multi and Cal 20 will be scored using the Low Point System. A & B will also be scored together, however awarded as separate fleets

13. **PRIZES:** Awards will be at WYC after the event

14. **DISCLAIMER OF LIABILITY:** Competitors participate in the regatta entirely at their own risk. See rule 4, Decision to Race. The organizing authority will not accept any liability for material damage or personal injury or death sustained in conjunction with or prior to, during, or after the regatta

15. **INSURANCE:** Each participating boat shall be insured with valid third party liability insurance with a minimum cover of \$300,000 per incident or the equivalent. The Cal 20s meet this requirement under the club's insurance policies.

**16. REQUIREMENTS FROM DLNR:**

16.1 All boats shall follow all navigational rules at all times while in the ocean waters.

16.2 Each boat operator shall have passed the boater safety education class and have their boater safety education card on them during the use of the motorized vessels. Cal 20 class is excluded.

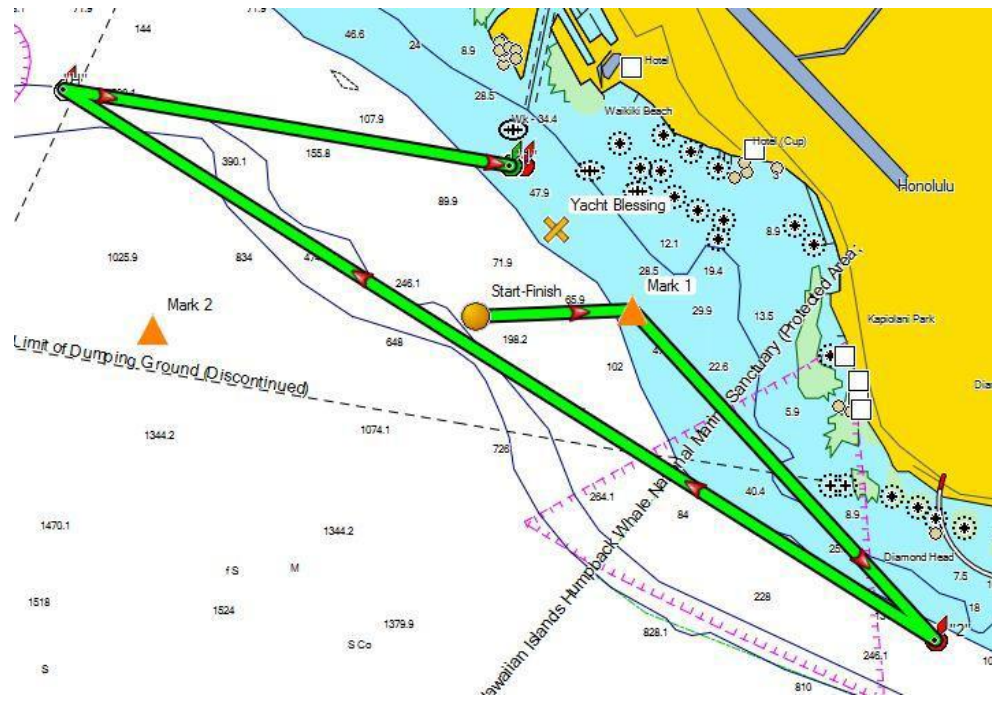
**17. M.O.B DRILL**

17.1 Each Cruise, A/B, X and Multi boat shall conduct a Man Overboard Drill during the course of the race. A floating object must be thrown overboard (not attached to the boat) and then recovered before racing is resumed.

17.2 At least one turn (one tack and one jibe) shall be conducted during the MOB Drill.

17.3 The MOB Drill can occur at any time during the race except for the area around the start/finish line and the 3-boat length zone around marks of the course.

# Cruising, A/B, X and Multi Course



# Cal 20 Course 1 & 2

