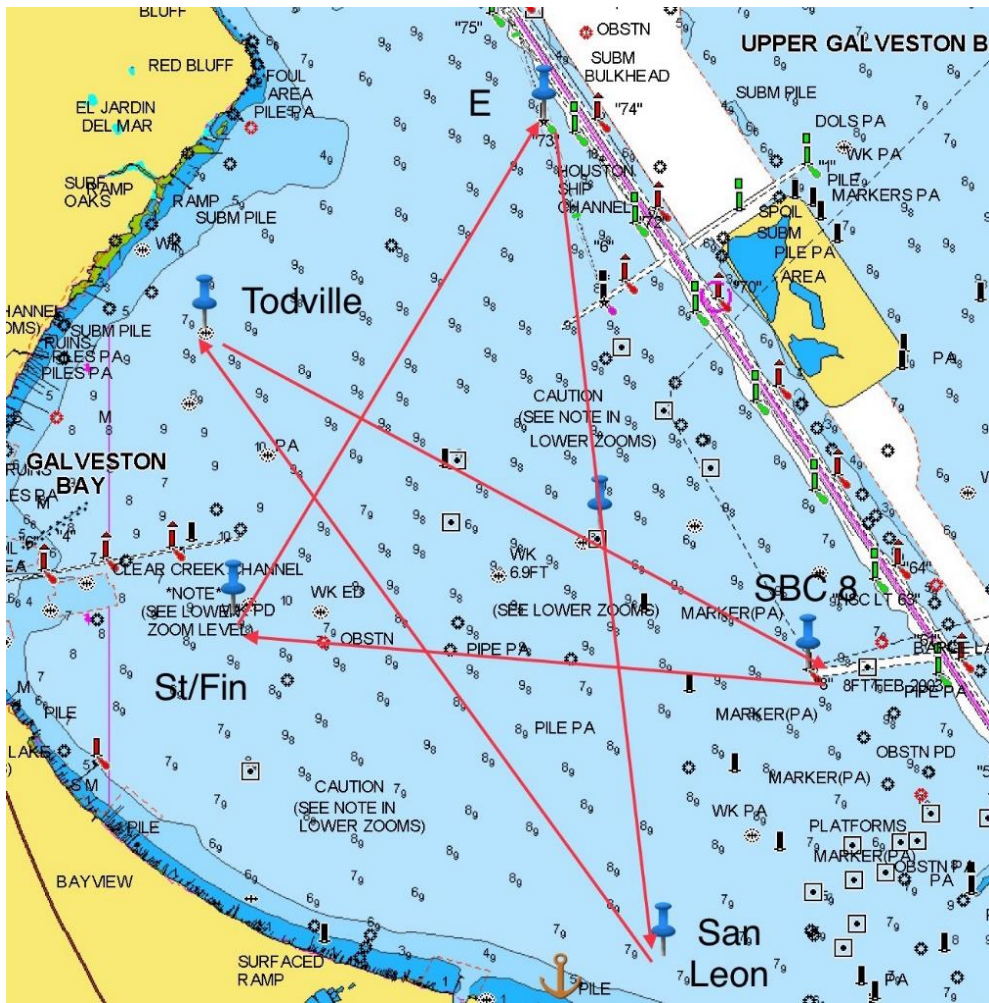


2019 Bay Cup I Sailing Instructions

ATTACHMENT A: COURSES

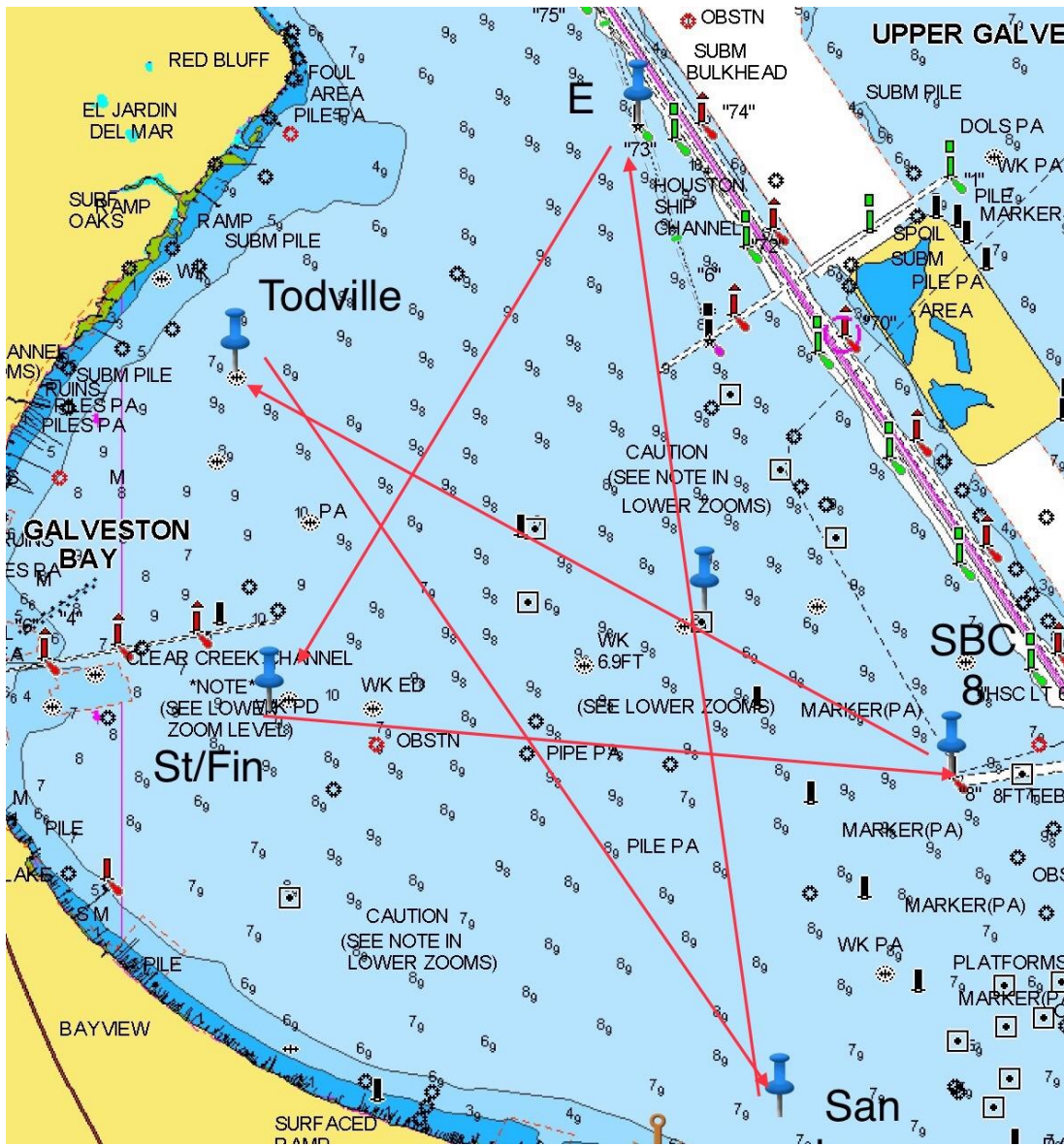
Course 1



	Mark	Approx. Brg.	Leave to:
Start	Start		
1	E	32*	Stbd
2	San Leon	172*	Stbd
3	Todville	324*	Stbd
4	SBC 8	119*	Stbd
Finish	Finish	275*	



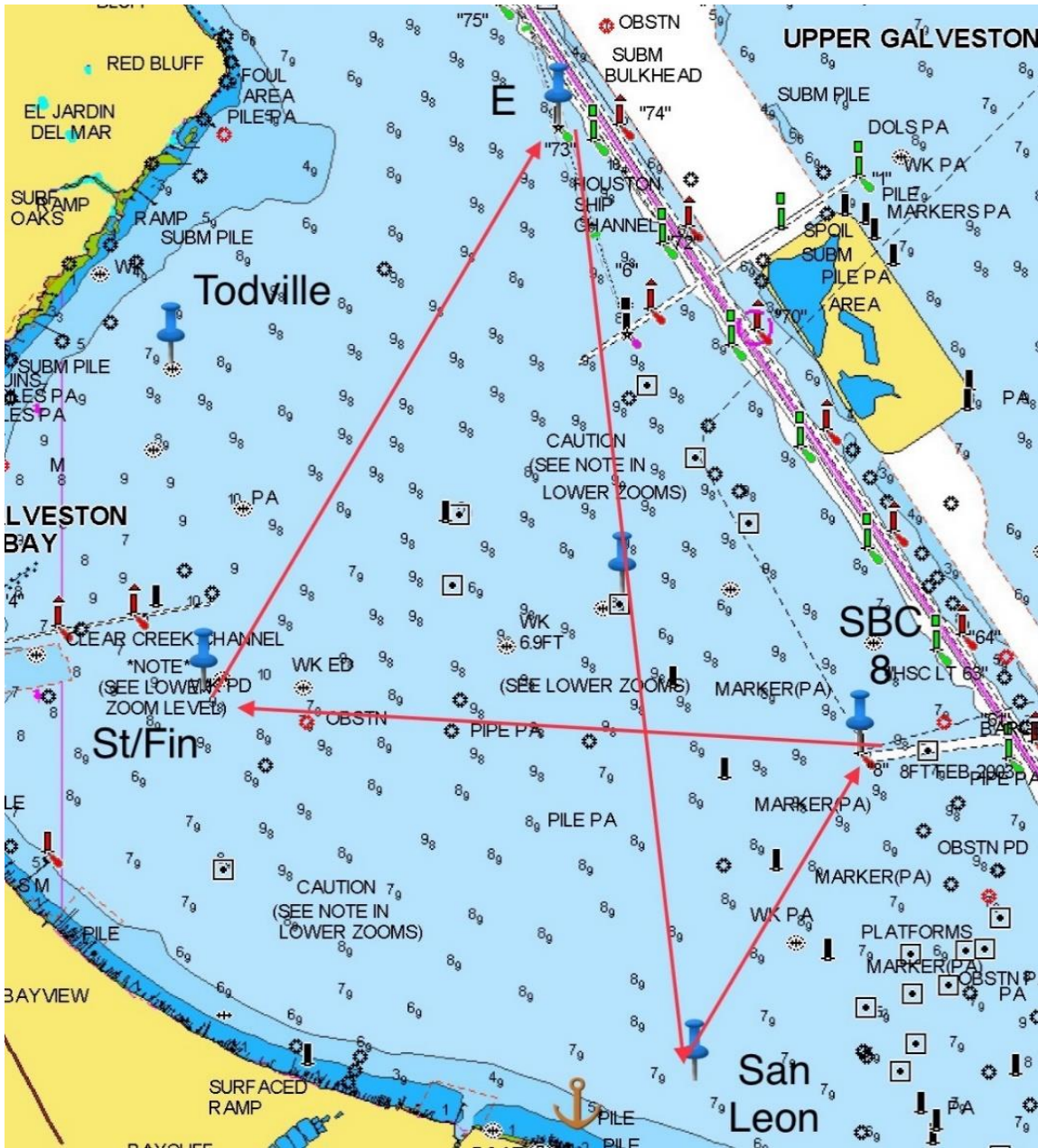
Course 2



	Mark	Approx. Brg.	Leave to:
Start	Start		
1	SBC 8	95*	Port
2	Todville	299*	Port
3	San Leon	144*	Port
4	E	352*	Port
Finish	Finish	212*	



Course 3



	Mark	Approx. Brg.	Leave to:
Start	Start		
1	E	32*	Stbd
2	San Leon	172*	Port
3	SBC 8	26*	Port
Finish	Finish	275*	









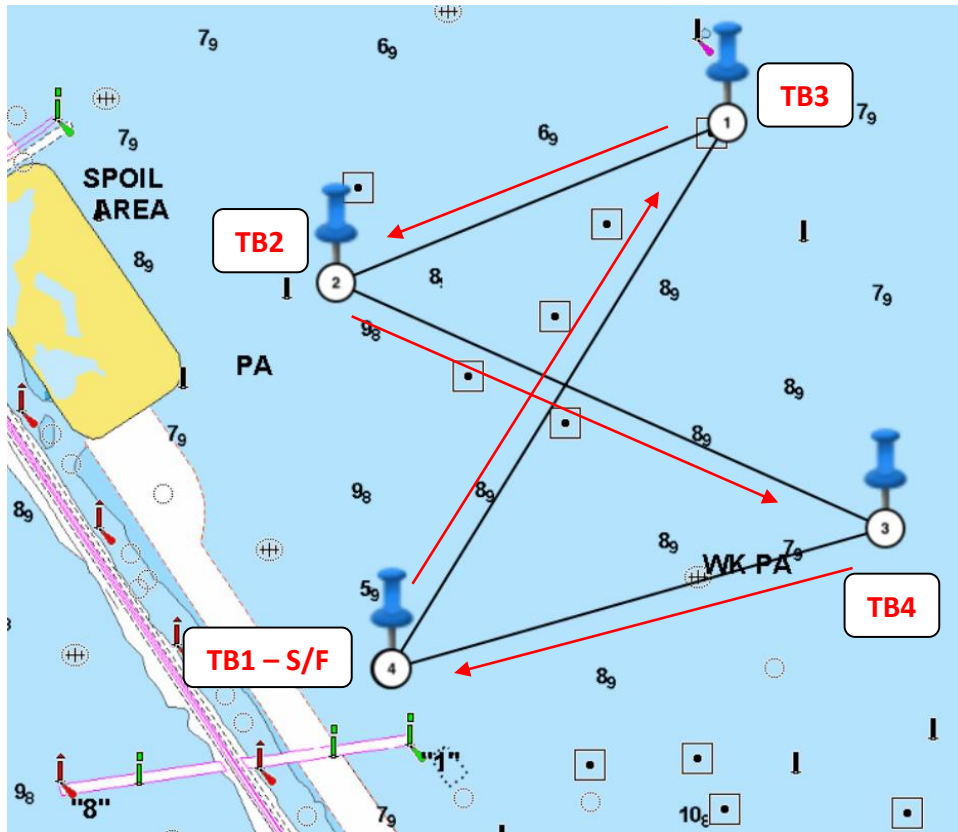




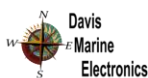




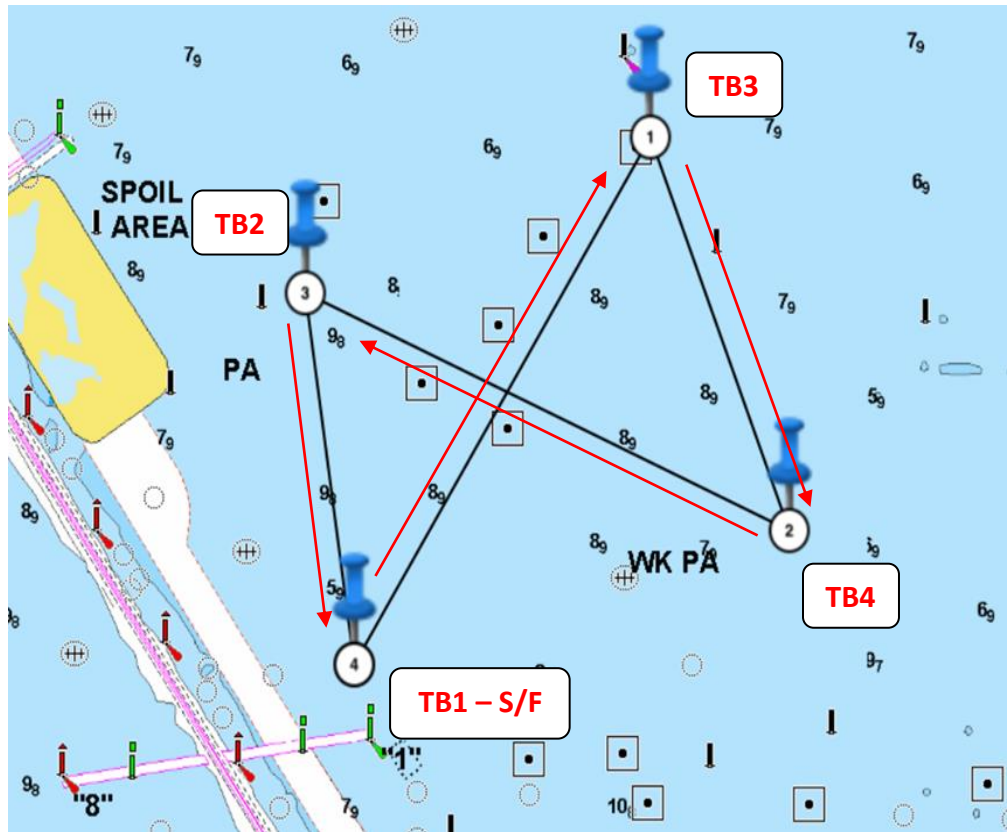

Course 5



	Location	Approx Bearing	Distance	Lat	Lon	Instruction
Start	b/w signal boat & pin / near TB 1			29°32.950	94°53.300	
1	TB 3	32°	3.0 nm	29°35.500	94°51.500	Leave to port
2	TB 2	248°	2.0 nm	29°34.750	94°53.600	Leave to port
3	TB 4	114°	2.8 nm	29°33.600	94°50.650	Leave to stbd
Finish (4)	b/w signal boat & pin / near TB 1	254°	2.4 nm	29°32.950	94°53.300	



Course 6



	Location	Approx Bearing	Distance	Lat	Lon	Instruction
Start	b/w signal boat & pin / near TB 1			29*32.950	94*53.300	
1	TB 3	32*	3.0 nm	29*35.500	94*51.500	Leave to stbd
2	TB 4	159*	2.0 nm	29*33.600	94*50.650	Leave to stbd
3	TB 2	294*	2.8 nm	29*34.750	94*53.600	Leave to port
Finish (4)	b/w signal boat & pin / near TB 1	172*	1.8 nm	29*32.950	94*53.300	

