



## **2019 Horn Island Hop Regatta**

July 6 - 7, 2019

Organizing Authority: Ocean Springs Yacht Club, Ocean Springs, Mississippi

### **SAILING INSTRUCTIONS**

#### **1 Rules**

1.1 The regatta will be governed by the rules as defined in the current Racing Rules of Sailing.

#### **2 Notices to Competitors & Information Meetings**

2.1 Notices to competitors will be posted on the notice board located on the 2nd floor of the Club outside the bar area.

#### **3 Changes to the Sailing Instructions**

3.1 Any change in the Sailing Instructions will be posted no less than 60 minutes prior to the first scheduled race on the day it will take effect, except that any change in the schedule of races will be posted by 2000 hours on the day before it will take effect.

#### **4 Signals Made Ashore**

4.1 Signals made ashore will be displayed from the 2nd floor southwest corner of the club.

4.2 When Race Signal AP is displayed ashore, "1 minute" is replaced with "not less than 30 minutes." This changes Race Signal AP.

#### **5 Schedule of Races**

5.1 There are 2 days of races scheduled

5.2 The scheduled first warning signal is listed below:

5.3.1 Saturday, 7/6 will be 1030

5.3.2 Sunday, 7/7 will be 1030

5.3.3 No race will start after 1400 on the last day of the regatta.

#### **6 Class Flags**

6.1 Class flags will be:

6.1.1 Open Spin will be Solid Blue

6.1.2 All Others Solid Green

Other class flags may be announced at the competitor meeting

#### **7 Racing Area**

7.1 The racing area will be on Biloxi Bay and the Mississippi Sound.

#### **8 Courses**

8.1 Day 1 - The diagrams in Attachment A show the potential courses for the weekend. The Organizer's intent is sail courses 1 and 2 to Ship Island and back, provided wind and weather permit. The final course selection will be announced at the 0930 Competitor's meeting.

8.2 Day 2 will be a choice of courses 3-7 from attachment A, dependent of weather conditions. The final course selection will be announced at the 0930 Competitor's meeting.

8.3 The course designation will be displayed from RC signal boat no later than the warning signal for each start.

## **9.0 Marks**

9.1 Marks for courses 1-5 are described in Attachment A

9.2 The marks for Races 6 and 7 will be an Orange Tetrahedron for Mark "A" (weather mark) and an Orange cylinder for Mark "C" (leeward mark).

The approximate GPS coordinates for all marks are provided below in Attachment 1

## **10 Reserved**

## **11 The Start**

11.1 Races will be started by using rule 26 with the warning signal made 5 minutes before the starting signal.

11.2 The starting line will be between the staff from which an orange flag is displayed on the race committee signal boat and the course side of the starting mark.

11.3 Boats whose warning signal has not been made are asked to stay clear of the starting area during the starting sequence for other classes. The starting area is defined as an area extending approximately 100 feet in all directions from the starting line.

## **12 Change of the Next Leg of the Course**

12.1 To change the next leg of the course, the RC shall lay a change mark (or move the finishing line) and remove the original mark as soon as practicable. When in a subsequent change a change mark is replaced, it shall be replaced by an original mark.

## **13 The Finish**

13.1 The finish line will be between the staff from which an orange flag is displayed on the race committee signal boat and the course side edge of the finishing mark.

13.2 If the race committee is absent when a boat finishes, she should report her finishing time, and her position in relation to nearby boats, to the race committee at the first reasonable opportunity.

## **14 Penalty System**

14.1 For all classes, RRS 44.1 is changed so that the Two-Turns Penalty is replaced by the One-Turn Penalty.

## **15 Time Limits and Target Times**

15.1 Due to the distances involved and the need to arrive back at OSYC at a safe time at the conclusion of Course 2, boats sailing Course 1 and finishing late will be scored "on the course" at the discretion of the Race Committee.

## **16 Protests and Requests for Redress**

16.1 Protest forms are available at the notice board as described in instruction 2.1

16.2 Protests or requests for redress shall be lodged at the yacht club office within sixty minutes of the race committee signal boat docking time. The race committee will post the docking time on the Official Notice Board as soon as possible.

16.3 Protests will be heard in the approximate order of receipt in the boardroom next to the women's restroom. The time of the protest hearings will be posted within fifteen minutes of the end of the protest time on the official notice board. This is the notice required under RRS 61.1 and 63.2.

## **17 Scoring**

17.1 The Low Point Scoring System of Appendix A of the RRS will apply, 1 throw out will be utilized if a total of 5 races are completed.

17.2 Fleets without sufficient entries to race as a one design fleet will be handicapped using the **Small Catamaran Handicap Racing System (SCHRS)**.

17.3 One completed race shall constitute a regatta.

## **18 Safety**

18.1 A boat that retires from a race shall notify a race committee boat before leaving the race area. In the event that is impossible, then immediately after arriving ashore the skipper shall notify a regatta representative.

18.2 Competitors shall wear a personal flotation device at all times while afloat, except temporarily while adding or removing clothes. Such device shall verifiably meet the requirements of either the sailor's national authority or of the government regulations that apply in the racing area. This changes rule 40. The penalty for failure to comply with this rule shall be at the discretion of the protest committee and may result in disqualification. Failure to follow this prescription is not protestable.

18.3 Boats shall check in by hailing their sail numbers to the race committee signal boat before the start of the first race each day (and the first race following any postponement ashore). Boats will not be checked in, started, or scored unless all members of the crew are complying with SI Item 18.2.

18.4 Before raising a mast, and always while sailing, check for and avoid low overhead electrical power lines.

18.5 Do not approach the OSYC pier from the south. The area is littered with hurricane debris from the pier to a line perpendicular to the beach marked by a vertical post in the sand.

## **19 Replacement of Crew or Equipment**

19.1 Substitution of competitors shall not be allowed without prior written approval of the Race Committee.

19.2 Substitution of damaged or lost equipment shall not be allowed unless authorized by the Race Committee. Requests for substitution of equipment shall be made to the Race Committee at the first reasonable opportunity.

## **20 Reserved**

## **21 Radio Communication**

21.1 Competitors are encouraged to carry VHF radios while racing. Except for emergencies or retirement from a race (pursuant to Instruction 18.1), a competitor shall not make VHF radio transmissions while racing. A boat shall not receive radio communications that are not available to all boats. This also applies to mobile telephones.

## **22 Prizes**

22.1 Trophies will be awarded 1st – 3rd in each overall class and shall be presented after the conclusion of racing on the last day of the event.

### **23 Disclaimer of Liability**

23.1 Competitors participate in the regatta entirely at their own risk, See RRS 4, Decision to Race. It is the personal responsibility of each competitor to determine their level of safety. If wind, wave or water conditions make you doubtful of your ability to handle the conditions safely, it is your decision and your decision only to continue sailing or to retire. The organizing authority shall not accept any liability for property damage, personal injury or death sustained in conjunction with, prior to, during, or after the regatta.

### **24 Insurance**

24.1 Each participating boat shall be insured with valid third-party liability insurance with a minimum coverage of \$100,000 (USD) per event or the equivalent.

### **25 Special Notes**

25.1 Any boat receiving 'hands on' assistance from rescue/mark boats shall be considered in violation of Rule 41 and scored Did Not Finish. In the interest of safety, the RC may decide when a boat or crew needs assistance.

25.2 The RC may request redress for competitors who exhibit extraordinary sportsmanship.

# Attachment A



## **Course 1:**

OSYC Start – Southeast end of Deer Island (leave to starboard) - Ship Island Finish

The location of each boat's rounding point at the southeast end of Deer Island is at the discretion of each boat. *Extreme caution is advised due to the location of unmarked shoals and shifting sands.*

## **Course 2:**

Ship Island Start - OSYC Finish

The location of each boat's rounding point at the southeast end of Deer Island is at the discretion of each boat. *Extreme caution is advised due to the location of unmarked shoals and shifting sands.*

Ship Island Start/Finish line is between the staff displaying an orange flag on the RC Signal Boat and the 37' USGS Ship Island Monitoring Platform whose approximate position is given as:

30° 15' 16" N

88° 52' 8.8" W

(Per USCG List of Lights, updated through 1/19)

### Course 3



#### **Course 3:**

OSYC Start - GM#12 (Leave to port) - GM#2 (Leave to Port )- Range Marker (Leave to Port) - OSYC Finish

Government Mark #12 (GM#12)

30° 23' 25" N

88° 53' 49" W

Government Mark #2 (GM#2)

30° 21' 39" N

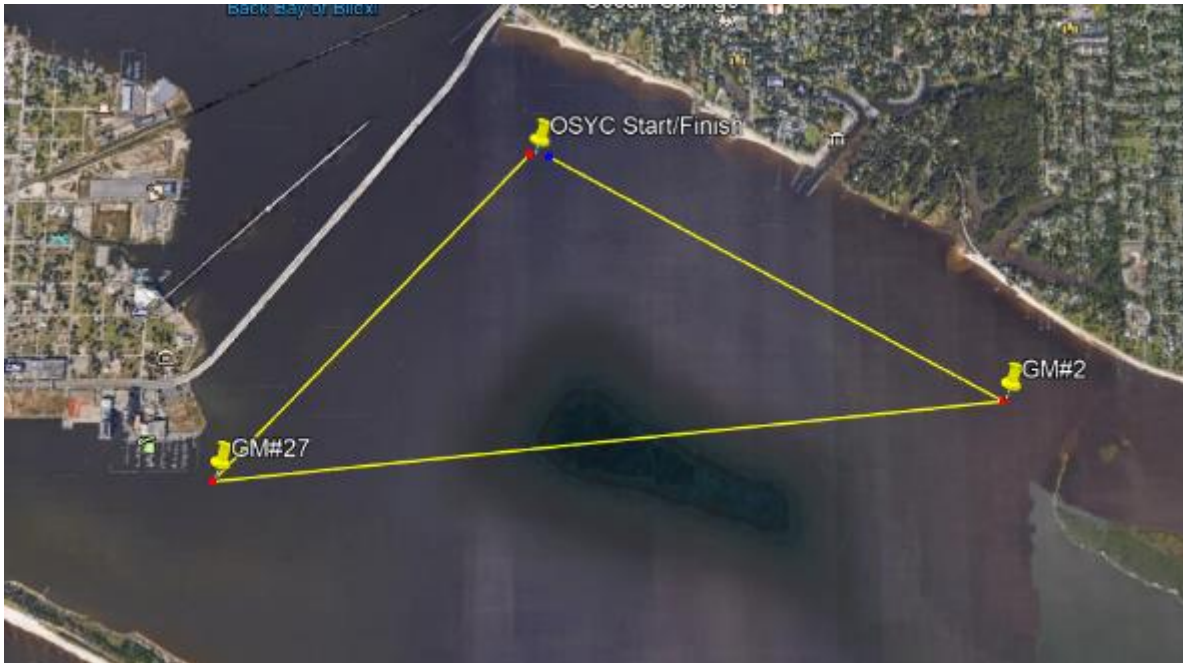
88° 54' 6" W

Historical Range Marker (RM) (Orange Tetrahedron as Surrogate)

30° 21' 1" N

88° 46' 48" W

## Courses 4 and 5



### Course 4:

(Once around): Start-GM#27 (Leave to port)-GM#2 (Leave to Port)-Finish

### Course 5:

(Twice Around): Start GM#27 (Leave to port)-GM#2 (Leave to Port)-Start/Finish Pin (Leave to Port)-GM#27 (Leave to port)-GM#2 (Leave to Port) – Finish

Government Mark #27 (GM#27) Green Square piling-mounted Dayboard, just off Point Cadet

30° 23' 17" N

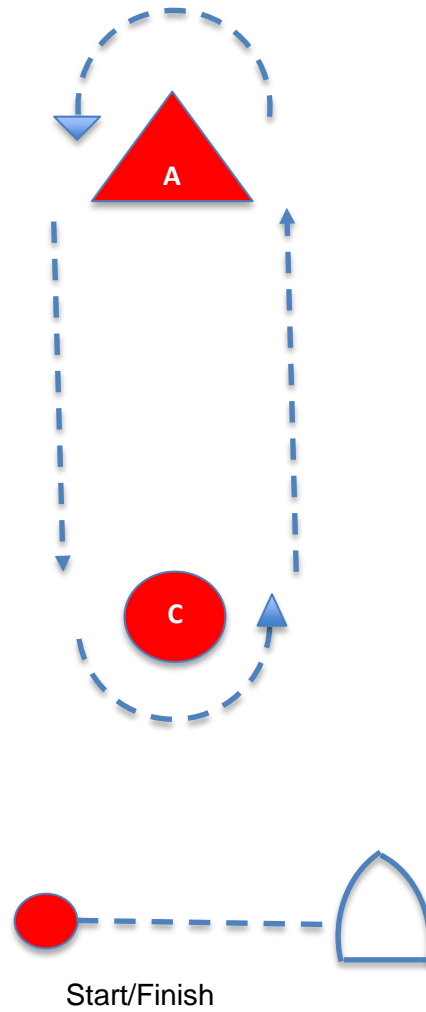
88° 51' 22" W

Government Mark #2 (GM#2) Red Triangular piling-mounted Dayboard, equipped with flasher, at entrance to Davis Bayou

30° 23' 30" N

88° 48' 52" W

**Courses 6 and 7**



**Course 6:**

(Once Around) A – Downwind Finish

**Course 7:**

(Twice Around) A – C – A – Downwind Finish