



KO Sailing HELLY HANSEN Shoe Regatta

May 18-19, 2019

Lakewood Yacht Club

2322 Lakewood Yacht Club Drive, Seabrook, TX 77586

Organizing Authority: Bay Access

(281) 474-2511 <http://www.lakewoodyachtclub.com>



Sailing Instructions

The notation '[DP]' in a rule in the SI means that the penalty for a breach of that rule may, at the discretion of the protest committee, be less than disqualification.

1. RULES

1.1. The regatta will be governed by the rules as defined in The Racing Rules of Sailing.

1.2. The following prescriptions of the United States national authority will not apply:

63.2

1.3.

1.3.1. One-Design fleets will be governed by their applicable Class Rules

1.3.2. The Performance Handicap Racing Fleet of Galveston Bay Ratings will apply to PHRF Handicap monohull fleets.

1.3.3. The Texas Offshore Multihull Association Ratings will apply to Handicap Multihull fleets.

1.3.4. The 2019 Offshore Racing Congress Rating Systems ORC International and ORC Club will apply to ORC handicap monohull fleets.

1.4. Racing rules will be changed as follows:

1.4.1. SI 4.2 changes RRS Race Signal AP.

1.4.2. SI 8.4 changes RRS 33.

1.4.3. SI 11.4 changes RRS A4 and A5.

1.4.4. SI 14.1 changes RRS 44.1 and 64.1(a).

1.4.5. SI 14.2 changes RRS 44.1 for cruising class(es)

1.4.6. SI 15.1 changes RRS 62.1(a).

1.4.7. SI 15.2 changes RRS 35, A4 and A5

1.4.8. SI 16.5 changes RRS T1

1.4.9. SI 16.7 changes RRS 62.2.

1.4.10. SI 17.1 changes RRS A2.

1.5. N/A

1.6. N/A

2. NOTICES TO COMPETITORS

Notices to competitors will be posted on the official notice board located in the vicinity of the west end of the pool at Lakewood Yacht Club.

As a courtesy, notices may also be posted online on the Regatta Network page, but failure to post a notice online will not be grounds for redress.

3. CHANGES TO SAILING INSTRUCTIONS

3.1. Any change to the sailing instructions will be posted before 0800 on the day it will take effect, except that any change to the schedule of races will be posted by 2030 on the day before it will take effect.

3.2. Oral changes to the sailing instructions may be given on the water by hail on the appropriate VHF channel in accordance with RRS 90.2(c).

4. SIGNALS MADE ASHORE

4.1. Signals made ashore will be displayed on the yardarm at Lakewood Yacht Club south of the main clubhouse.

4.2. When flag AP is displayed ashore, "1 minute" is replaced with "not less than 60 minutes" in the race signal AP.

5. SCHEDULE OF RACES

5.1. Dates of racing: May 18 and 19, for all lines.

5.2. Number of races: For each line, as many races as practical will be run for each class.

5.3. The scheduled time for the warning signal for the first race each day will be no earlier than 1000 for all lines.

5.4. N/A

5.5. On the last scheduled day of racing no warning signal will be made after 1400.

5.6. Flag A displayed, with no sound, while boats are finishing means "No more racing today."

6. CLASS FLAGS AND LINE ASSIGNMENTS

Class line assignments and class flags are identified and designated in Attachment 1.

7. RACING AREA

7.1. The general racing area will be Galveston Bay between Clear Creek Channel Marker #1, the Houston Ship Channel, Red Bluff and Eagle Point in San Leon.

7.2. There will be two race committee lines located as follows:

7.2.1. LINE A: The racing area will be northeast of the Clear Creek Channel Marker #1.

7.2.2. LINE B: The racing area will be Southeast of the Clear Creek Channel Marker #1.

8. THE COURSES

8.1. LINE A: The diagrams in Attachment 2 show the courses, including the approximate angles between legs; the order in which marks are to be passed; and the side on which each mark is to be left.

8.2. LINE B Windward/Leeward courses: The diagrams in Attachment 3 show the courses, including the approximate angles between legs; the order in which each mark is to be left.

8.3. LINE B Distance courses: Classes will sail a course selected from the "Distance Courses" listed in Attachment 4.

8.3.1. Mark 1 for the Distance courses will be placed between 1 and 1.5 NM to windward (+/-20 degrees) of the signal vessel. The fleet(s) will leave this mark as indicated in Attachment #4

8.4. For Distance Courses only, the legs of the course will not be changed after the preparatory signal. This changes RRS 33.

9. MARKS

9.1. LINE A

9.1.1. Marks 1, 2P and 2S are **yellow** tetrahedrons. Mark 1A, will be an orange or red buoy.

9.1.2. Course changes for mark 1 made in accordance with RRS 33 will replace the yellow tetrahedron with an **orange** tetrahedron. Course changes for the Marks 2P and 2S will continue to use yellow tetrahedrons.

9.1.3. Mark W is a **green** tetrahedron. Course changes for mark W made in accordance with RRS 33 will be made by moving the same green tetrahedron.

9.2. LINE B Windward/Leeward courses

9.2.1. Marks 1, 2P and 2S are **orange** tetrahedrons. Mark 1A, will be an orange or red buoy.

9.2.2. Course changes for mark 1 made in accordance with RRS 33 will replace the orange tetrahedron with a **yellow** tetrahedron. Course changes for the Marks 2P and 2S will continue to use orange tetrahedrons.

9.3. LINE B Distance courses

9.3.1. Mark 1 will be a **white** tetrahedron. The remaining marks will be fixed marks as designated in Attachment 4.

9.4. The starting and finishing marks will be the race committee signal vessel and orange or red buoys. SI 11.2 will describe the starting lines and SI 13.1 the finishing lines.

10. AREAS THAT ARE OBSTRUCTIONS

The following areas are designated as obstructions:

10.1. The Houston Ship Channel is designated as an obstruction.

10.2. For the ORC fleet, the area between the mark 1 and mark 1a is an obstruction.

10.3. The Safety Zone defined in Marine Safety Information Bulletin (MSIB) 41-19 is designated as an obstruction (i.e., a circle of 1 one NM radius centered on the Morgan's Island Low Range, 29°35.76'N, 094°56.88W (commonly called the "E" mark"). See attachment 5 for a graphical depiction of the area.

11. THE START

11.1. Races will be started by using RRS 26.

11.2. The starting line will be between a staff displaying an **orange** flag on the race committee vessel and the course side of the starting mark.

11.3. Boats whose warning signal has not been made shall avoid the starting area during the starting sequence for other races. [DP]

11.4. A boat that does not start within 10 minutes after her starting signal will be scored Did Not Start without a hearing. This changes RRS A4 and A5.

11.5. N/A

12. CHANGE OF THE NEXT LEG OF THE COURSE

12.1. Except for the ORC fleet, to change the next leg of the course, the race committee will lay a new mark (or move the gate or finishing line) and remove the original mark as soon as practicable. When in a subsequent change a new mark is replaced, it will be replaced by an original mark.

12.2. For the ORC fleet, to change the next leg of the course, the race committee will move the mark, gate or finishing line.

13. THE FINISH

13.1. The finishing line will be between a staff displaying a **blue** flag on the race committee vessel and the course side of the finishing mark.

14. PENALTY SYSTEM

14.1. Touching an anchored race committee vessel

14.1.1. The Penalty for violating RRS 31 by touching an anchored race committee vessel shall be to retire, and no exoneration is available. This modifies RRS 44.1 and 64.1(a).

14.1.2. The penalty for violating a rule of Part 2 with the result that another boat touches an anchored race committee vessel, shall be for the offending boat to retire.

14.1.3. For purposes of SIs 14.1.1 and 14.1.2, touching a float and its line trailing from an anchored race committee vessel will not be treated as touching an anchored race committee vessel, but will be treated as touching a mark in violation of RRS 31 and penalties and exoneration will be controlled by RRS 44.1 and 64.1.

14.2. For cruising class(es) RRS 44.1 is changed so that the Two-Turns Penalty is replaced by the One-Turn Penalty.

15. TIME LIMITS AND TARGET TIMES

15.1. Time limits and target times are as follows:

<i>Line</i>	<i>Time limit</i>	<i>Mark 1- time limit</i>	<i>Target time</i>
<i>A</i>	<i>2 hr</i>	<i>45 min</i>	<i>J/105: 45-50min ORC: 60-75 min</i>
<i>B (W/L)</i>	<i>2 hr</i>	<i>45 min</i>	<i>45-50min</i>
<i>B (Distance)</i>	<i>4 hr</i>	<i>2 hr</i>	<i>2.5 hr</i>

If no boat has passed Mark 1 within the Mark 1 time limit the race will be abandoned. Failure to meet the target time will not be grounds for redress. This changes RRS 62.1(a).

15.2. Windward/Leeward courses: Boats failing to finish within 30 minutes after the first boat sails the course and finishes will be scored Did Not Finish without a hearing. This changes RRS 35, A4 and A5.

15.3. Distance courses: Boats failing to finish within 1 hour after the first boat sails the course and finishes will be scored Did Not Finish without a hearing. This changes RRS 35, A4 and A5.

16. PROTESTS AND REQUESTS FOR REDRESS

16.1. Boats wishing to protest shall inform the Race Committee prior to leaving the racing area and receive confirmation. Protest forms and Penalty acceptance forms are available on a table in the entrance foyer at the LYC clubhouse. Protests, requests for redress, Penalty Acceptance and requests for re-opening must be

submitted to the club secretary (window office nearby) prior to the appropriate Time Limit (see below).

- 16.2. For each class, the Protest Time Limit shall be 60 minutes after the Signal boat for that start re-enters the Inner Harbor, or the time at which that signal boat not intending to re-enter the harbor informs the club secretary. These times are to be posted on the official notice board as soon as they are available, along with the Protest Time Limit.
- 16.3. Notices will be posted no later than 30 minutes after the protest time limit to inform competitors of hearings in which they are parties or named as witnesses. Hearings are scheduled to be held in the Commodore's Room, located up the stairs from the clubhouse foyer, beginning at the time posted.
- 16.4. Notices of protests by the race committee, technical committee or protest committee will be posted to inform boats under RRS 61.1(b).
- 16.5. The penalty acceptance provisions of Appendix T, specifically Appendix T1, only shall apply. Arbitration will not apply.
- 16.6. Violations of SI 11.3 and 18 will not be grounds for a protest by a boat. This changes RRS 60.1(a).
- 16.7. On the last scheduled day of racing a request for redress based on a protest committee decision shall be delivered no later than 30 minutes after the decision was posted. This changes RRS 62.2.

17. SCORING

- 17.1. The Low Point Scoring System of Appendix A will apply. Each boat's total score shall be the sum of her scores for all races. No score will be excluded. This modifies RRS A2.
- 17.2. One race is required to be completed to constitute a series.
- 17.3. Boats in the PHRF Classes will be scored using Time-on-Time (TOT) scoring.
 - 17.3.1. The Time Correction Factor (TCF) will be calculated as follows:
$$\text{TCF} = 650 / (550 + \text{PHRF}).$$
- 17.4. In accordance with Section 403 of the *ORC Rating Systems 2019*, Boats in the ORC classes will be scored using the Triple-number Time-on-Time method. For distance courses the Circular Random handicap will be used, for Windward/Leeward courses, the windward/leeward handicap shall be used.

18. SAFETY REGULATIONS

- 18.1. Check - In: Before the Warning Signal for the race, a boat shall check-in with the Race Committee on the water by sailing past the stern of the anchored Race Committee signal vessel on starboard tack and hailing the boat's name, or sail number, until acknowledged by the Race Committee. Boats shall not check in via VHF Radio. Failure to check in is not subject to protest by another boat. [DP]
- 18.2. At each boat's check-in, every person on board shall be visible on deck wearing or holding a personal floatation device (PFD). [DP]

18.3. A boat that retires from a race shall notify the race committee as soon as possible, or if not possible, contact the LYC office at 281-474-2511. [DP]

19. N/A

20. N/A

21. N/A

22. N/A

23. N/A

24. N/A

25. N/A

26. DIVING EQUIPMENT AND PLASTIC POOLS

Underwater breathing apparatus and plastic pools or their equivalent shall not be used around keelboats between the preparatory signal of the first race and the end of the regatta. [DP]

27. RADIO COMMUNICATION

The Race Committee will monitor and utilize the following VHF channels to communicate with racers:

- a) VHF Channel 69 on LINE A
- b) VHF Channel 72 on LINE B

28. PRIZES

28.1. Prizes will be given as follows:

- First place for classes with 3 boats.
- First and second place for classes with 4 to 5 boats
- First, second and third place for classes with 6 to 8 boats
- First, second, third and fourth place to classes with more than 8 boats.

28.2. Additional trophies may be awarded at the discretion of the Race Committee.

28.3. The name of the winner of the most competitive spinnaker class sailing windward/ leeward courses as determined by the Race Committee will be added to the Shoe Regatta Challenge Cup Wheel perpetual trophy.

29. DISCLAIMER OF LIABILITY

Competitors participate in the regatta entirely at their own risk. See RRS 4, Decision to Race. The organizing authority will not accept any liability for material damage or personal injury or death sustained in conjunction with or prior to, during, or after the regatta.

30. INSURANCE

Each participating boat shall be insured with valid third-party liability insurance with minimum coverage of \$300,000 per incident or the equivalent.

Attachment 1

LINE ASSIGNMENTS, CLASS FLAG and STARTING SEQUENCE FOR THE FIRST RACE OF EACH DAY

The starting order may change for subsequent races

LINE A – “Large Boat” Windward/Leeward	
Signal Vessel: <i>At Last</i>	
<u>CLASSES</u>	<u>FLAG</u>
ORC	Yellow
PHRF Spin W/L	Purple
J/105	J/105 Class Flag
LINE B – “Small Boat” Windward/Leeward, Distance	
Signal Vessel: <i>Pal VI</i>	
<u>CLASSES</u>	<u>FLAG</u>
PHRF Non-Spin Distance PHRF Spin Racer/Cruiser Distance	Pink
J/22	J/22 Class Flag

Attachment 2 LINE A, J/105 and PHRF Spinnaker Courses



Course 2: Start-1-1a-Finish



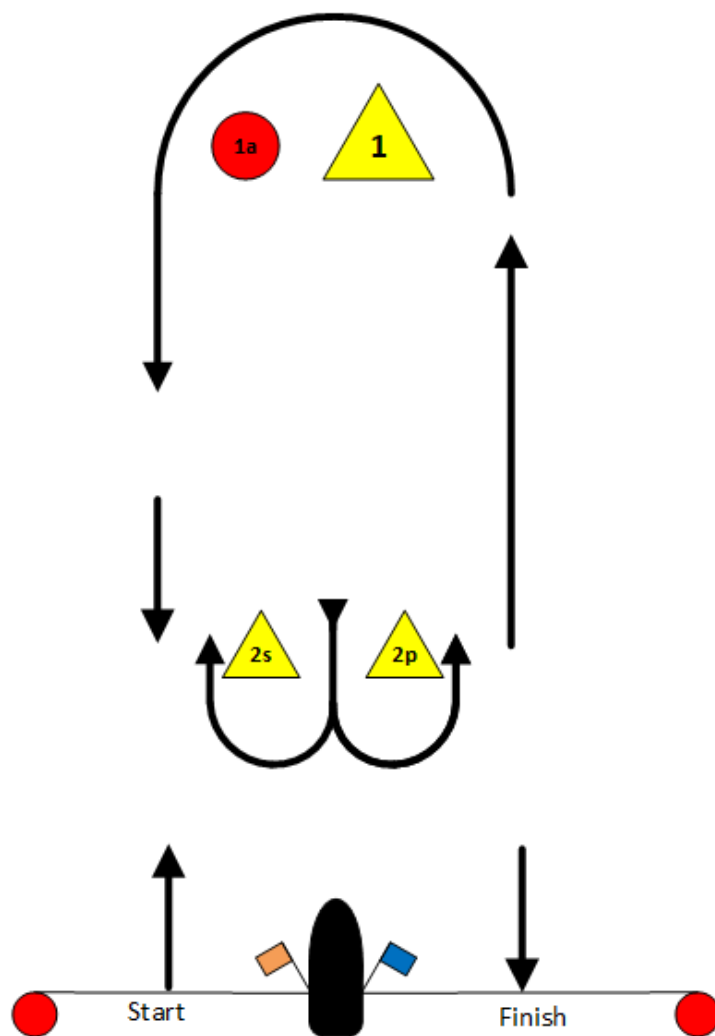
Course 4: Start-1-1a-2p(s)-1-1a-Finish



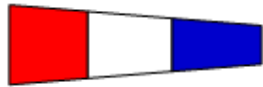
Course 6: Start-1-1a-2p(s)-1-1a-2p(s)-1-1a-Finish



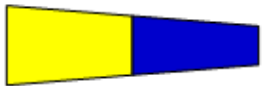
Change mark Color



Attachment 2 LINE A, J/105 and PHRF Spinnaker Courses



Course 3: Start-1-1a-2p(s)-Finish



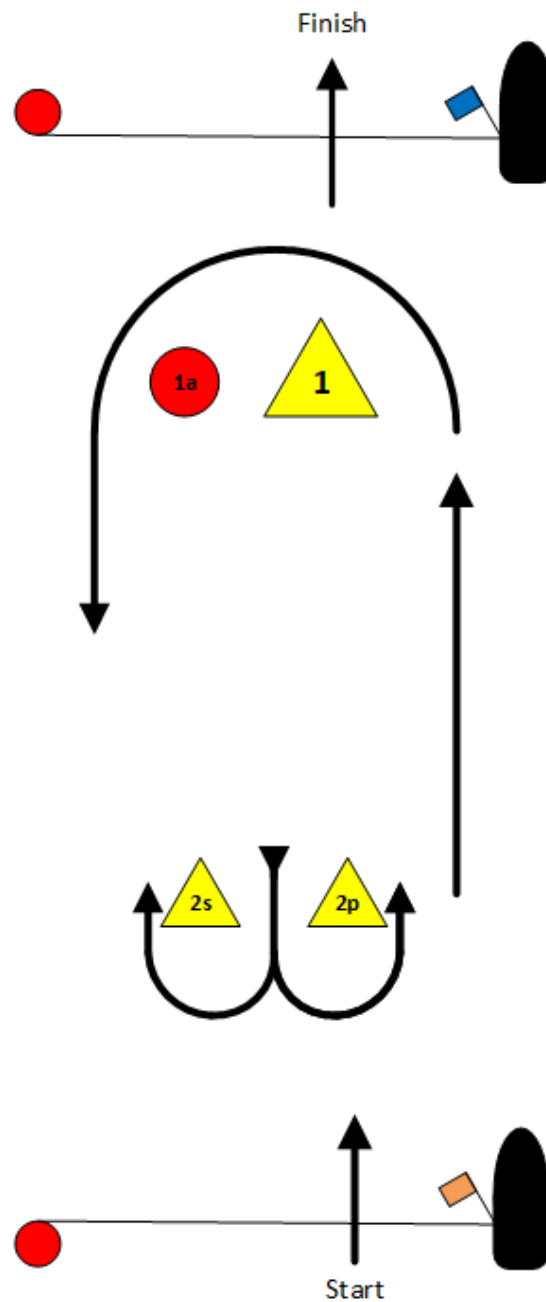
Course 5: Start-1-1a-2p(s)-1-1a-2p(s)-Finish



Change mark Color



Course 7: Start-1-1a-2p(s)-1-1a-2p(s)-1-1a-2p(s)-Finish



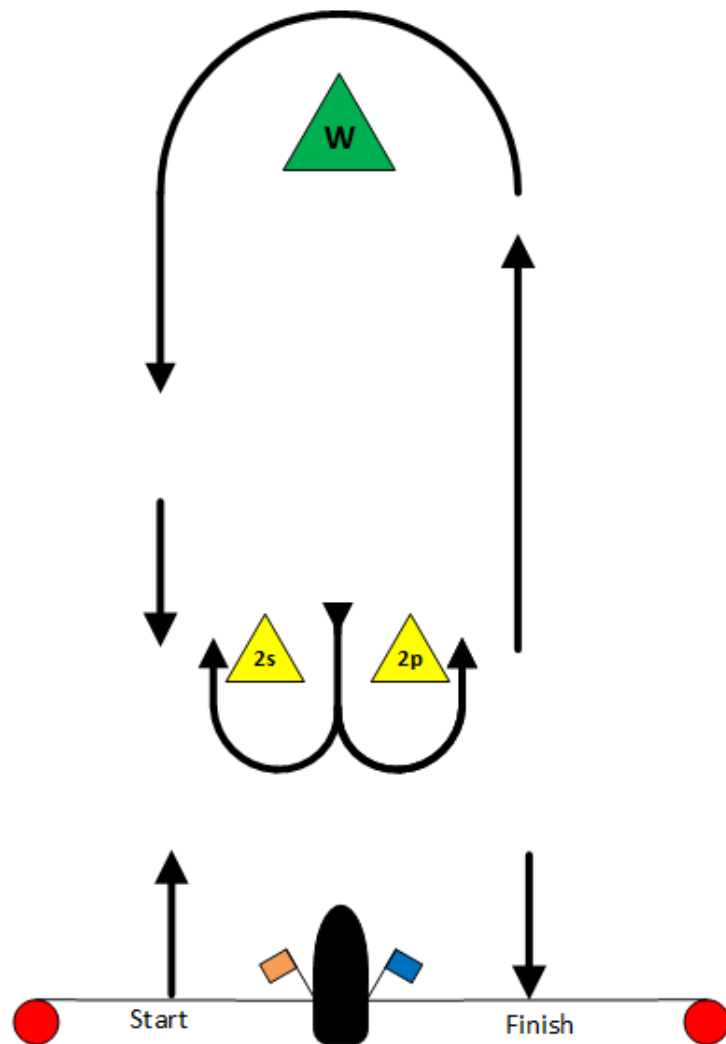
Attachment 2 LINE A, ORC Courses



Course 2: Start-W-Finish



Course 4: Start-W-2p(s)-W-Finish



Attachment 3 LINE B, J/22 Courses



Course 2: Start-1-1a-Finish



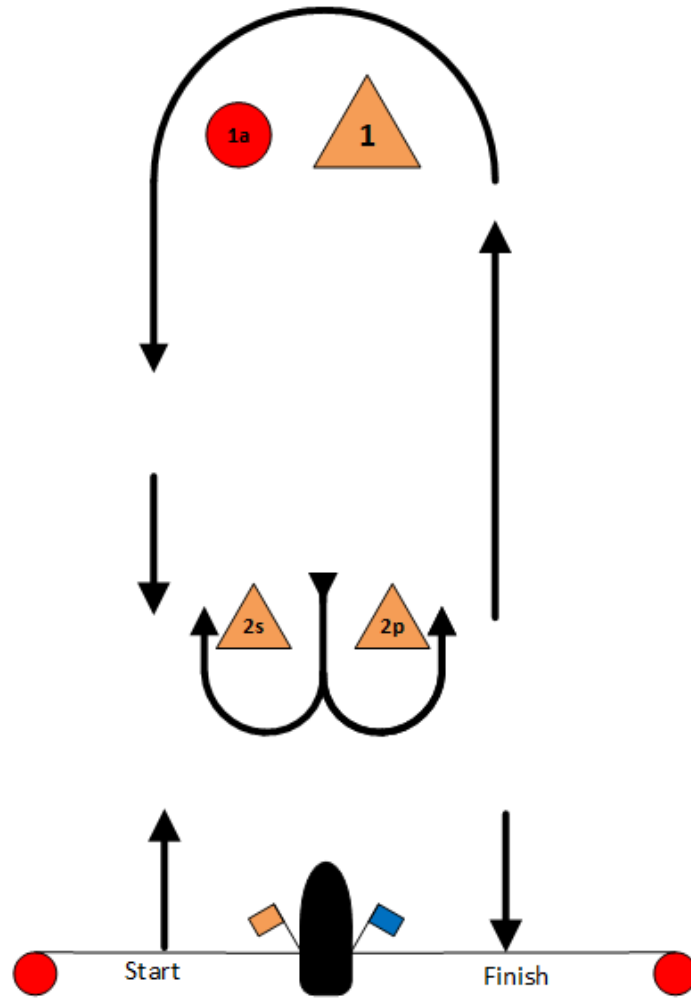
Course 4: Start-1-1a-2p(s)-1-1a-Finish



Course 6: Start-1-1a-2p(s)-1-1a-2p(s)-1-1a-Finish



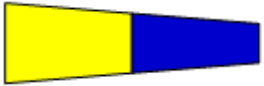
Change mark Color



Attachment 3 LINE B, J/22 Courses



Course 3: Start-1-1a-2p(s)-Finish



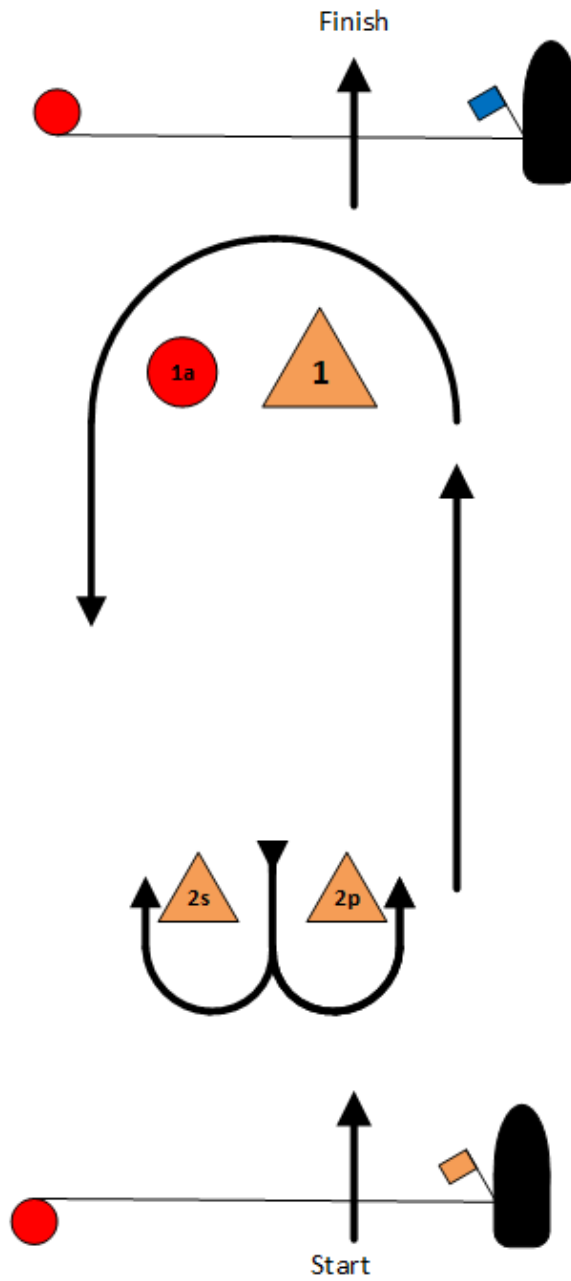
Course 5: Start-1-1a-2p(s)-1-1a-2p(s)-Finish



Change mark Color

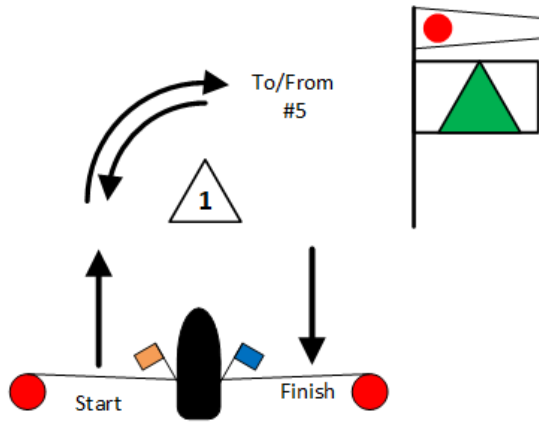


Course 7: Start-1-1a-2p(s)-1-1a-2p(s)-1-1a-2p(s)-Finish

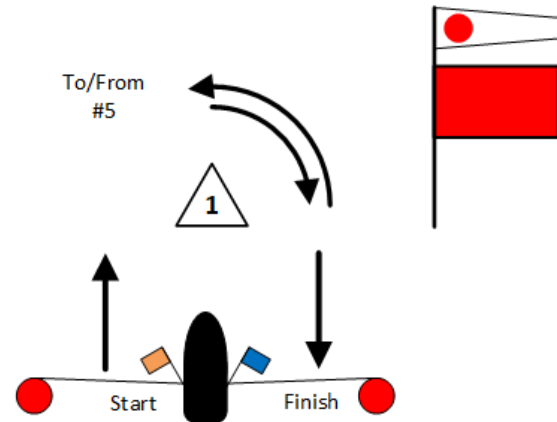


Attachment 4 LINE B, Distance Courses

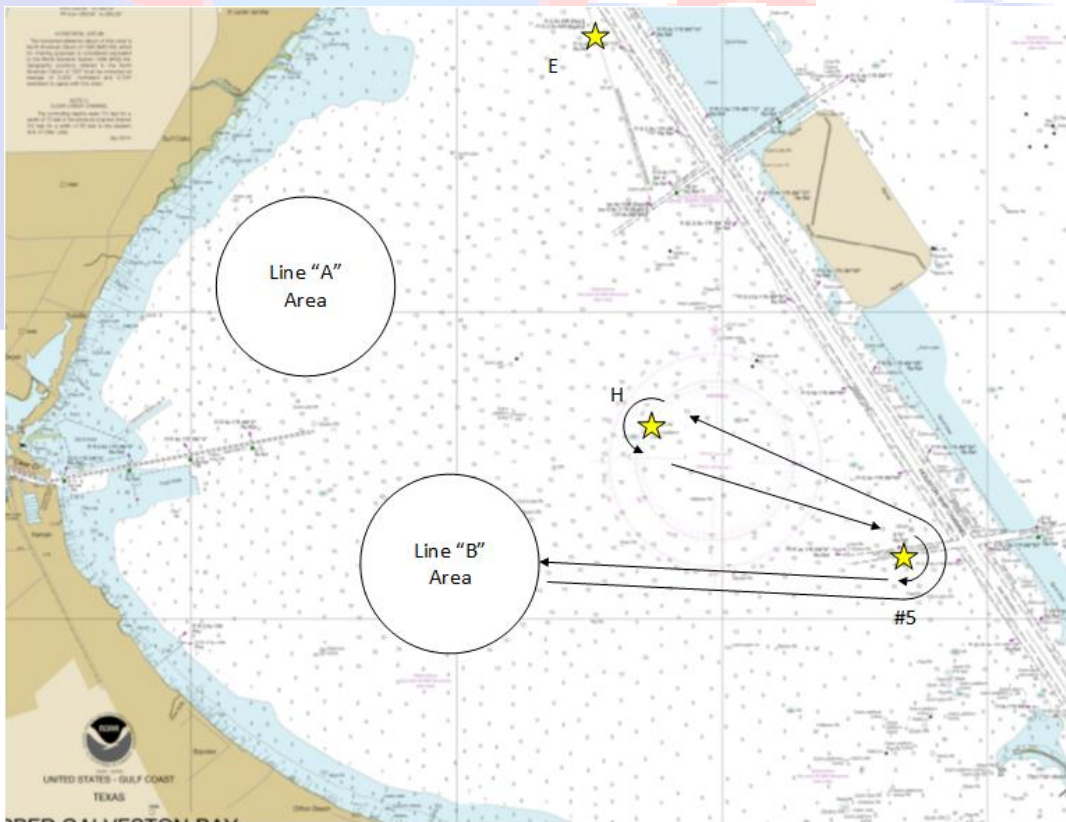
Course 1-Green
(for Northerly winds)



Course 1-Red
(For Southerly winds)



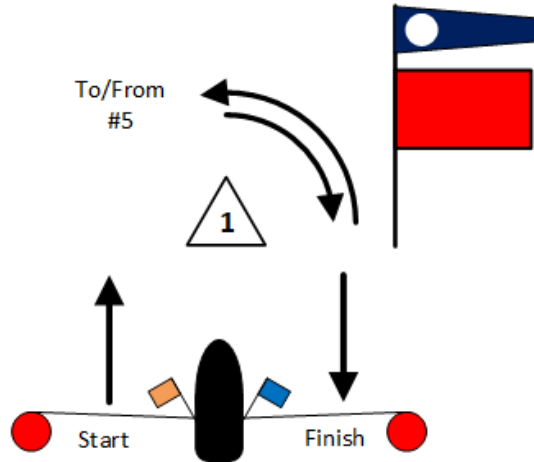
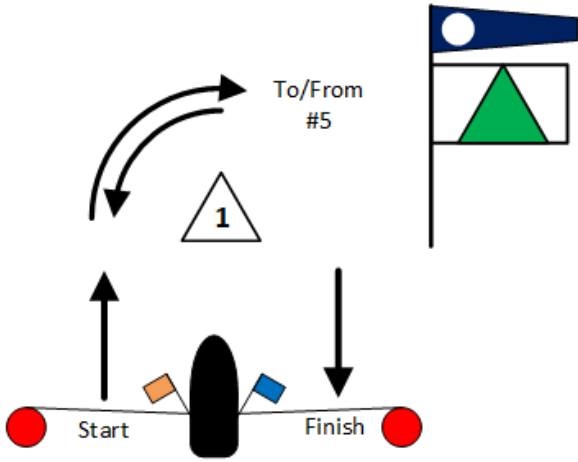
Name	Description	Approximate Lat	Approximate Lon	Approx. BRG	Dst. (Nm)
Start	Signal Vessel to stbd.				
1	White tetrahedron				1-1.5
SB Cut 5	South Cut #5 to port	29°32.410 N	094°54.655 W		
GB H	H Mark to port	29°33.255 N	094°56.542 W	300°	1.85
SB Cut 5	South Cut #5 to stbd.	29°32.410 N	094°54.655 W	120°	1.85
1	White tetrahedron				
Finish	Signal Vessel to stbd.				1-1.5



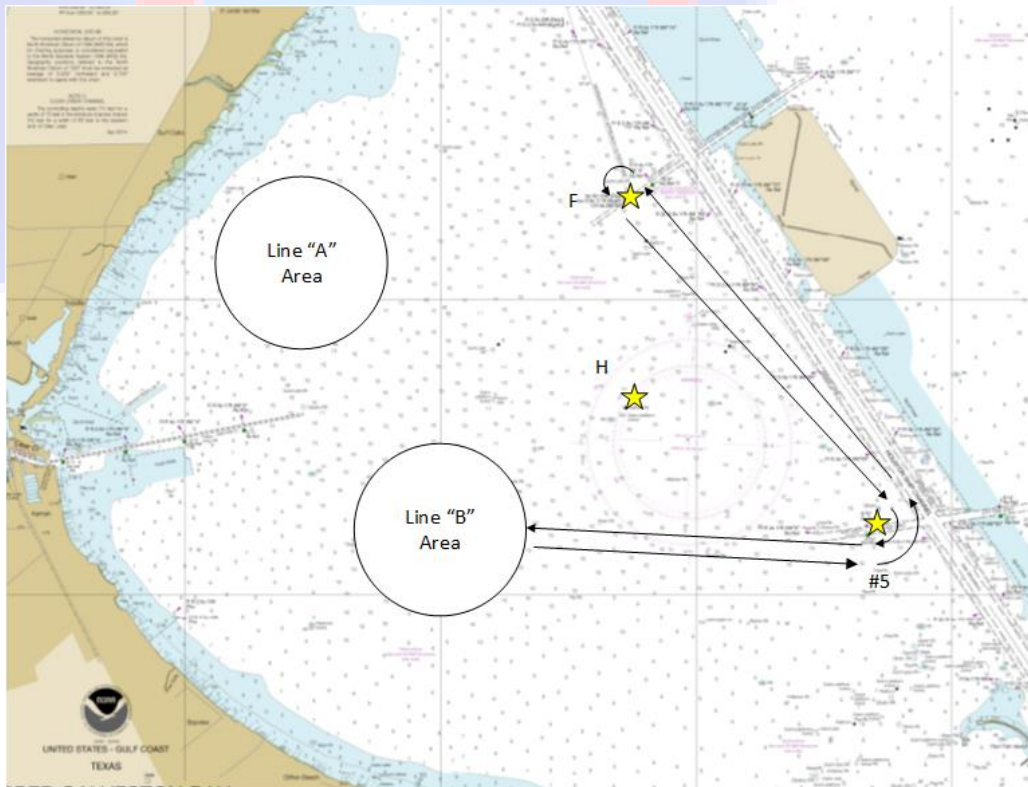
Attachment 4 LINE B, Distance Courses

Course 2-Green
(for Northerly winds)

Course 2-Red
(For Southerly winds)

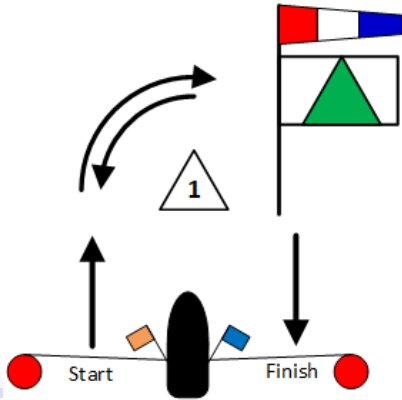


Name	Description	Approximate Lat	Approximate Lon	Approx. BRG	Dst. (Nm)
Start	Signal vessel to stbd.				
1	White tetrahedron				
SB Cut5	South Cut #5 to port	29°32.410 N	094°54.655 W		
Hi Range("F")	Hi Range to port	29°34.677 N	094°56.518 W	324°	2.78
SB Cut 5	South Cut #5 to stbd.	29°32.410 N	094°54.655 W	144°	2.78
1	White tetrahedron				
Finish	Signal vessel to stbd.				

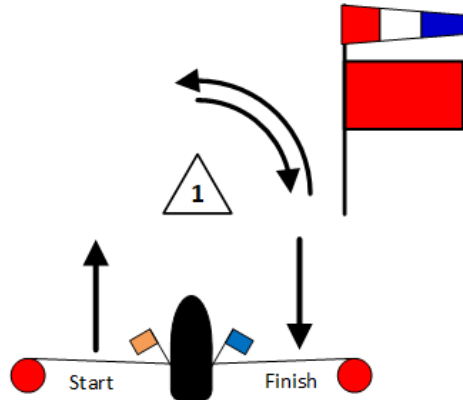


Attachment 4 LINE B, Distance Courses

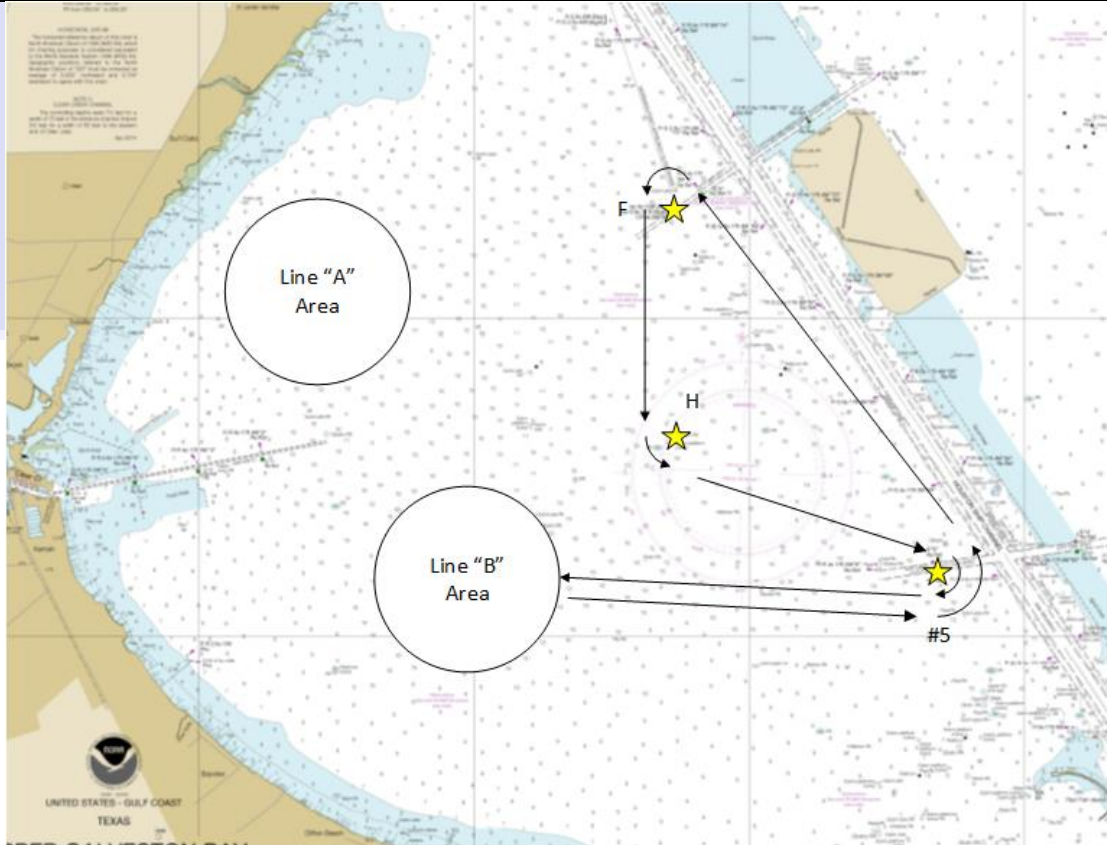
Course 3-Green
(for Northerly winds)



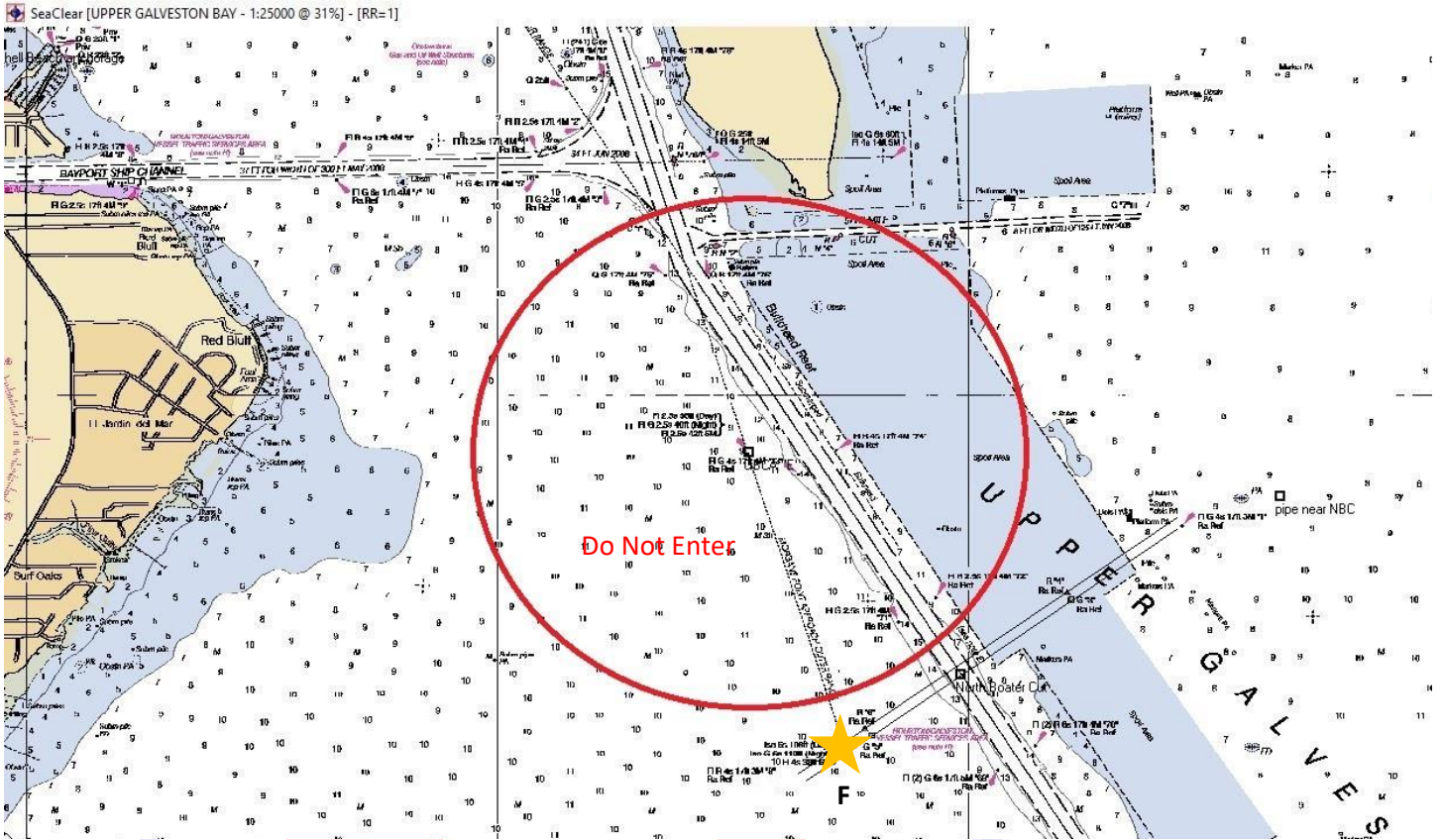
Course 3-Red
(For Southerly winds)



Name	Description	Approx. Lat	Approx. Lon	Approx. BRG	Dst. (Nm)
Start	Signal vessel to stbd.				
1	White tetrahedron				1-1.5
South Cut #5	South Cut #5 to port	29°32.410 N	094°54.655 W	070°	2.53
Hi Range ("F")	Hi Range to port	29°34.677 N	094°56.518 W	324°	2.78
GBCA "H"	H Mark to port	29°33.255 N	094°56.542 W	180°	1.4
South Cut #5	South Cut #5 to stbd.	29°32.410 N	094°54.655 W	120°	1.85
1	White tetrahedron				
Finish	Signal vessel to stbd.				1-1.5



Attachment 5 USCG Safety Zone



Thank you to our valuable sponsors!



Kevin E. Severance
Insurance Agency
"Discover the Difference"



TEXAS
COAST
YACHTS

