

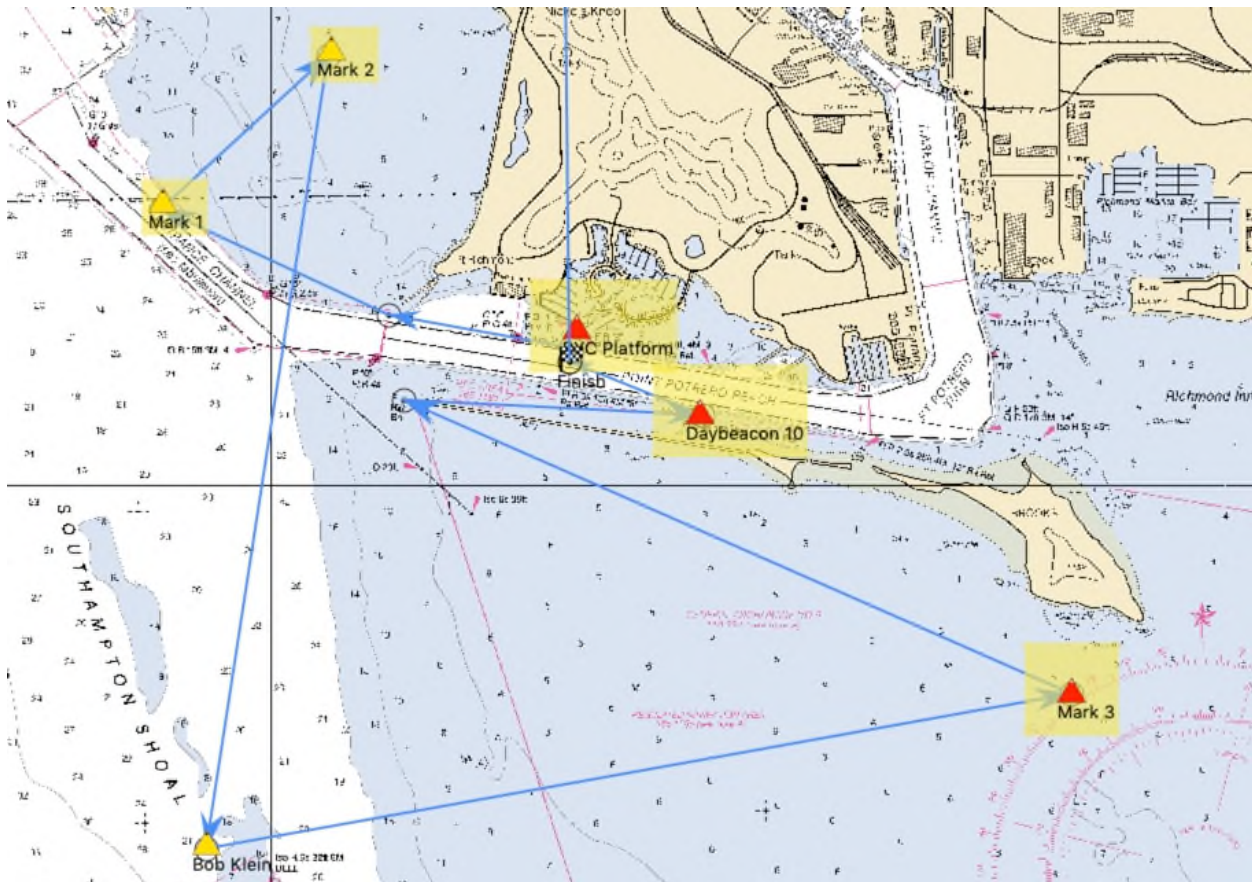
BIG DINGHY

ATTACHMENT C

LONG COURSE – 9.25 nm

LONG COURSE Mark	Distance/bearing
Start Red Ball	
Yellow Inflatable #1 (S)	1m (which is @0.67 bearing 294° from the end of the pier)
Yellow Inflatable #2 (P)	.60 heading 47°
Bob Klein (P)	2.30 heading 191°
Red Inflatable (P) off Brooks Island	2.5 heading 77°
Red Day Beacon “10” (P)	2.25
Docked Pelican Finish Line & Ball	.60
Total Distance	9.25 nautical miles

NOTE : Interference with commercial traffic will be grounds for disqualification



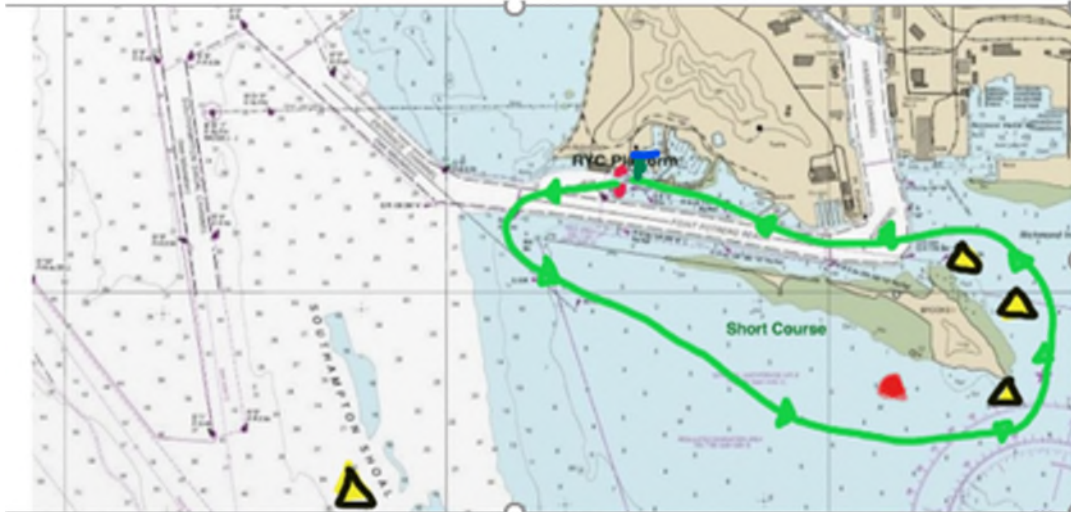
BIG DINGHY

ATTACHMENT C

SHORT COURSE - 5nm

Start (RYC Platform) > Around Brooks Island (P) > Finish (Docked Pelican within RYC Harbor)

Keep all yellow marks to port.



NOTE : Interference with commercial traffic will be grounds for disqualification