



THE MOONLIGHT RACE 17 August 2019

The Rudder Club of Jacksonville 8533 Malaga Avenue Jacksonville, FL
32244

Sailing Instructions

1 RULES

- 1.1 The race will be governed by The Racing Rules of Sailing (RRS), the prescriptions of US SAILING, and the scoring rules of the North American Portsmouth (NAPY) system.
- 1.2 Racing Rule 41 is changed such that a boat accepting assistance under Fundamental Rule 1.1 is exempt from the provisions of RRS 41 -Outside Help. Capsized sailboats are encouraged to accept assistance as necessary.

- 2 NOTICES TO COMPETITORS** Notices to competitors will be posted on the official notice board on the north exterior wall of the Rudder Club and the on-line notice board at

<http://www.regattanetwork.com/event/18771>

3 CHANGES IN THE SAILING INSTRUCTIONS

- 3.1 Any change to the Sailing Instructions will be posted on the Official Bulletin Board on the North Wall of the Rudder Club and the on line notice board at <http://www.regattanetwork.com/event/18771> prior to 1900 17 August.
- 3.2 Oral changes to the Sailing Instructions may be made on the water and communicated to each boat prior to its warning signal.

4 SIGNALS MADE ASHORE

- 4.1 Signals made ashore will be displayed from the flag pole located on the north side of the Rudder Club.
- 4.2 When flag AP is displayed ashore, "one minute" is replaced with "not less than 45 minutes" in the race signal AP. Boats are requested not to leave the harbor when this signal is made.

5 SCHEDULE OF RACE

- 5.1 One race is scheduled.
Registration: 1730 – 1830
Saturday 17 August 2019
Sailors Meeting: 1845
Warning signal for first class: 1950
Sunset: 2006
End of Civil Twilight: 2031
Moonrise: 1812
Moon illumination will be 93%.
Sunrise 18 August 0657
Moonset 18 August: 0638

- 6 CLASS FLAGS** There will be one class and one start. Numeral pennant One (1) will be the class flag.

- 7 RACING AREA** The racing area will be in the St.

Johns River between 

the Buckman Bridge to the south and the Fuller Warren Bridge to the north as depicted on NOAA Chart 11492.

- 8 THE COURSE** The course will be posted on the official bulletin board as a Notice to Competitors. The course will also be signaled on a white board displayed on the committee boat using the designators assigned river marks as depicted in addendum "A."

9 MARKS

- 9.1 Marks of the course, except for start and finish, will be government navigation markers or FCSA River Marks as depicted in Addendum "A." Mark E is a FCSA river mark and is a yellow inflated cylinder.

- 10 START** The starting line will be in the vicinity of race mark "E" and will be between an orange flag flown on the Race Committee Boat and an orange mark set toward the left side of the course from the RC boat.
- 11 THE FINISH** The finish line will be extending from an orange flag on the end of the Rudder Club pier and perpendicular (90°) to the final leg of the race course.
- 12 SCORING AND TIME LIMIT**
- 12.1 Boats will be scored using the North American Portsmouth System.
- 12.2 Time Limit The time limit shall be 3 hours for each class. Yachts failing to finish within 45 minutes corrected time after the first boat finishes will be scored "Did not Finish." This changes rule A4.2
- 13 PROTESTS AND REQUESTS FOR REDRESS**
- 13.1 Protests and requests for redress shall be written on forms available at the Rudder Club Race Office. They shall be filed with the Race Officer.
- 13.2 The protest time limit is 90 minutes after the last boat has finished.
- 13.3 RRS Section D of Appendix T, Arbitration, is in effect.
- 13.4 Protest and Redress hearings will be conducted at 1000 Sunday Morning 18 August.
- 14 SAFETY**
- 14.1 Boats intending to race shall sail past the stern of the committee boat on starboard tack prior to their warning signal and check in. Boats not finishing shall ensure the race committee knows they have dropped from the race. Failure to do so could result in an expensive USCG and FFWC Search and Rescue Operation. Offenders may be required to pay that cost or some portion thereof.
- 14.2 All competitors are required to conform to the U.S. Coast Guard regulations and the RRS concerning personal floatation devices and other required equipment. All boats are reminded that under fundamental rule 4 "The responsibility for a boat's decision to participate in a race or to continue racing is

hers alone.

14.3 Boats shall not impede the passage of a vessel which can safely navigate only within a narrow channel. Boats interfering with other vessels may be subject to protest by the Race Committee or contestants and possible disqualification.

14.4 In accordance with Rule 42.3(h), providing no significant advantage is gained, a boat may employ propulsion using an engine or other method to remain clear of a non-racing vessel when required by Inland Rules.

14.5 All boats shall be equipped with functional navigation lights and sound producing device which comply with the Inland Navigation Rules. Lights shall be displayed at all times between the hours of sunset (2002) and sunrise (0657).

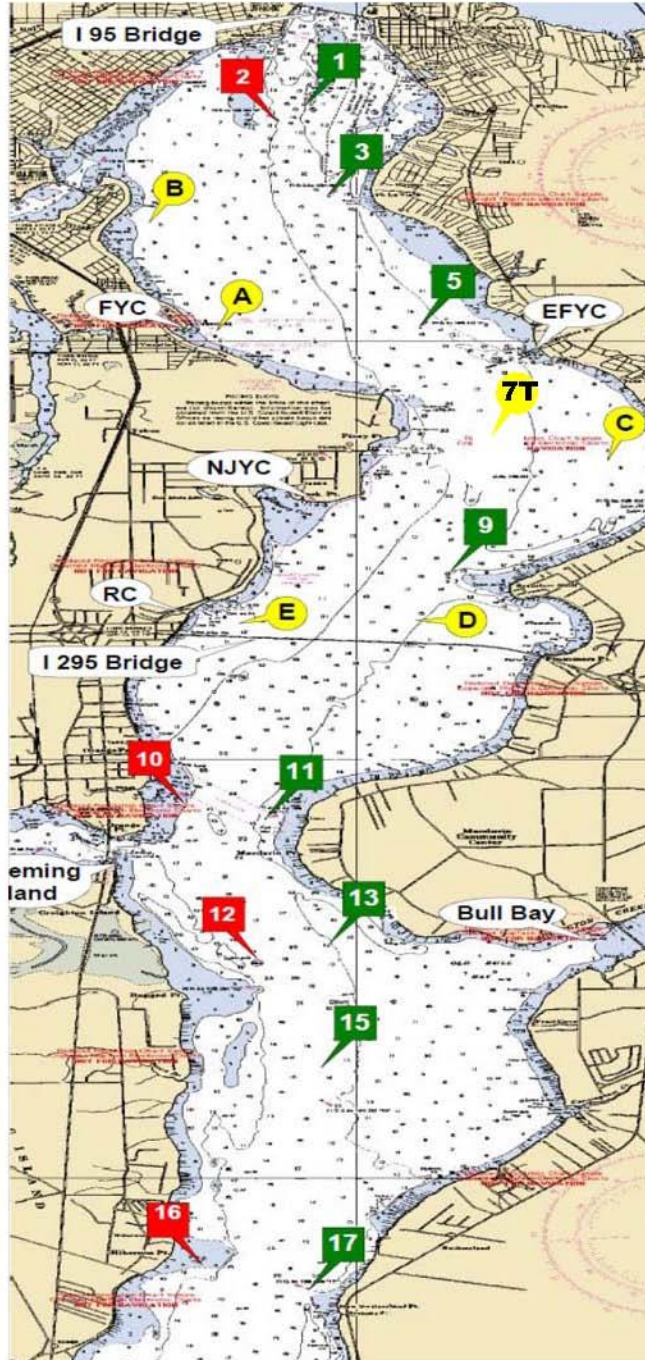
Failure to comply with this requirement is protestable. Spreader and foredeck lights are allowed.

14.6 Any boat whose lights fail to illuminate in accordance with the rules shall proceed immediately to the Rudder Club or their home dock. They shall notify the race committee and sound restricted visibility signals in accordance with COLREGS while proceeding (one 4-6 second blast every two minutes).

15 PRIZES: Results will be posted at the Rudder Club by 1100 18 August. First, second, and third place prizes will be awarded.

First Coast Sailing Association Race Marks

Distance	nm
1 to 3	1.039
1 to 5	2.787
1 to 7T	4.643
1 to A	2.793
1 to B	1.570
3 to 5	1.773
3 to 7T	3.615
3 to 9	4.638
3 to A	1.829
3 to B	1.126
3 to C	3.763
5 to 7T	1.863
5 to 9	2.926
5 to A	1.468
5 to B	2.299
5 to C	2.029
5 to D	3.486
7 to 9	1.095
7 to C	0.977
7 to D	1.697
7 to E	2.240
9 to C	1.726
9 to D	0.618
9 to E	1.486
A to B	1.523
A to C	3.140
B to C	4.303
C to D	2.328
C to E	3.111
D to E	1.127
11 to 13	2.317
11 to 15	3.400
11 to 17	5.631
11 to 17A	6.836
13 to 15	1.109
13 to 17	3.360
13 to 17A	4.575
13 to 18	5.585
15 to 17	2.252
15 to 17A	3.467
15 to 18	4.476
17 to 17A	1.216
17 to 18	2.225
17A to 18	1.010
18 to 20	2.038



Green 1
N 30° 17.813
W 81° 40.411

Red 2
N 30° 17.628
W 81° 40.635

Green 3
N 30° 16.780
W 81° 40.259

Green 5
N 30° 15.142
W 81° 39.466

Green 7T
N 30° 13.305
W 81° 39.077

See Race Mark "7T"

Green 9
N 30° 12.216
W 81° 39.237

Red 10
N 30° 09.513
W 81° 41.399

Green 11
N 30° 09.305
W 81° 40.794

Red 12
N 30° 07.240
W 81° 40.800

Green 13
N 30° 07.036
W 81° 40.224

Green 15
N 30° 05.926
W 81° 40.283

Red 16
N 30° 04.038
W 81° 41.254

Green 17
N 30° 03.671
W 81° 40.393

Green 17A
N 30° 02.457
W 81° 40.522

Red 18
N 30° 01.445
W 81° 40.551

Green 19
N 30° 01.335
W 81° 40.279

Red 20
N 29° 59.822
W 81° 39.126

****Note: If set these marks will be an inflatable mark. Race Mark "A"**

N 30° 15.090 W 81° 41.160

Race Mark "B"

N 30° 11.648 W 81° 39.522

Race Mark "C"

N 30° 13.564 W 81° 37.989

Race Mark "D"

N 30° 16.581 W 81° 41.539

Race Mark "E"

N 30° 11.648 W 81° 40.822 Race Mark "7T" N 30° 13.305 W 81° 39.077