

# PHRF SAILING INSTRUCTIONS

## 2019 BAY SHORE YACHT CLUB's GSBYRA INVITATION REGATTA

**SATURDAY, JULY 27**

### 1. RULES

1.1. The races will be governed by the most recent "Racing Rules of Sailing" except where specifically changed in these sailing instructions.

### 2. ELIGIBILITY AND ENTRY:

2.1. The Regatta is open to all members in good standing of a GSBYRA Full Member Clubs and clubs affiliated with US SAILING, and invited guests.

2.2. Eligible boats may register at <http://www.regattanetwork.com/event/18834>

2.3. **Registration closes for all boats on Friday, July 26 at 1900.**

2.4. ***Unregistered boats will not be scored.***

2.5. In order for a yacht to qualify to participate it must be self-righting.

### 3. CLASSES

3.1 PHRF Spin – Pursuit Format

3.2 PHRF NoSpin – Pursuit Format

### 4. NOTICES TO COMPETITORS:

4.1. Notices to competitors will be broadcast on VHF Channel #72 and (when time allows) will be posted on the Regatta Network website (see Paragraph 2.2).

4.2. Racers shall monitor VHF channel #72 at all times.

5. **CHANGES IN SAILING INSTRUCTIONS:** Will be posted on the Regatta Network (see Paragraph 2.2) before 1000 on the day they will take effect, except that any change in the schedule of races will be posted by 1800 on the day before they will take effect.

### 6. SIGNALS MADE ASHORE

6.1. All signals shall be made on VHF channel #72

### 7. SCHEDULE OF RACES

7.1. Saturday, July 27

Warning Signal (4-5 short blasts over VHF Channel #72): 1259 GPS time

Base Start Signal (1 long blast over VHF Channel #72): 1300 GPS time

7.2 Sunday, July 28 **No PHRF**

**8. RACING AREA** is Great South Bay to the south of Bay Shore Marina

**9. COURSES**

9.1 Appendix A Describes the Courses. The Course to be sailed will be announced on VHF channel #72 at approximately 12:45

**10. STARTING PROCUDURES**

- 10.1 When you arrive at the starting area, hail the committee boat on VHF channel 72 and broadcast, your Boat name, and sail number and if you are racing Spin or noSpin
- 10.2 While you are in the starting area, listen to VHF channel #72 for the course number that will be run. Continue to listen to your radio for additional information from the committee boat.
- 10.3 After you know what course number is being run, go to the Starting Offset spreadsheet Appendix B and follow the selected course number column down until it intersects the row with your specific boat information. There are many courses so it is important that you select the course column that corresponds to the course being run (announced on VHF Channel #72 about 15 minutes before the start of the race). The information in the box where the row and column meet is your "Starting Time Offset". The "Starting Time Offset" is the number of minutes and seconds that you should start racing after the "Base Starting Time" horn has sounded.
- 10.4 EXAMPLE: Assuming the "Base Starting Time" is 1300, If your "Starting Time Offset" is +01:32 (1 minute and 32 seconds) you should add this to the "Base Starting Time" and that will be your "Actual Starting Time".

Example:	"Base Starting Time (PHRF rating of 300)"	13:00
	"Starting Time Offset"	+01:32
	"Actual Starting Time"	13:01:32

**11. START LINE:**

- 11.1 Yachts will start in the vicinity of the flashing green government Buoy "1" in Great Cove. Buoy "1" is located .8nm south of the Bay Shore Town Marina. There will be no "X" mark for this race so boats should start within 75 yds of Buoy # 1.
- 11.2 Please keep the starting area clear for those boats that are about to start in order to avoid congestion at the starting line. It is very important that no boat be on the course side of the starting line after the "Base Starting Time."

**12. STARTING SEQUENCE**

- 12.1 There will be multiple (4-5) rapid horn blasts one minute prior to the "Base Starting Time" horn. One minute after the multiple rapid horns, a single long horn will be sounded precisely at 1300. This long single horn marks the "Base Starting Time". At the "Base Starting Time" horn, yachts with a handicap of 300 may start. Any yacht with a lower handicap will start after a specific amount of time has elapsed after the "Base Starting Time" horn. Every boat will be assigned a separate "Starting Time Offset" based on your boat's handicap rating and the course chosen to be sailed.
- 12.2 This is a pursuit race, and each yacht will have her own "Actual Starting Time" based on her handicap.

**13. FINISH LINE:**

**13.1** There will not be a specific Finish Line that boats must pass through. Yachts must finish by passing within 75 yards of Buoy #1 on the prescribed side in the course description.

**13.2** Yachts that finish the race should call the committee boat on VHF channel "72" indicating their boat name and sail number. Yachts that finish the race should also note their GPS finish time and the boat that finished immediately ahead and behind them. This information will be used should there be a discrepancy with the order of finish as recorded by the committee boat or in the event the committee boat had to leave station.

**10 TIME LIMIT:** The Time Limit is 3 hours for each class. Boats failing to finish within 30 minutes after the first boat in her starting class completes the course will be scored DNF (did not finish).

**11 SCORING**

**11.1** Scoring will be done by the pursuit method based on Time-on-Distance. A boat's time allowance is taken at her start so that the boats' finishing positions will be their actual finish place.

**12 PROTESTS AND REQUESTS FOR REDRESS:**

**12.1** Rule 61.1a is amended in that a boat intending to protest shall notify the RC Boat immediately after finishing and identifying the boat(s) being protested.

**12.2** RC will convene a protest hearing at BSYC as soon as possible.

**13 SAFETY REGULATIONS:**

**13.1** All competitors ages 17 or under shall wear a properly fastened US Coast Guard approved Personal Floatation Device (PFD), inherently buoyant, (i.e. not inflatable) while afloat. Float coats and inflatable PFD's are NOT permitted.

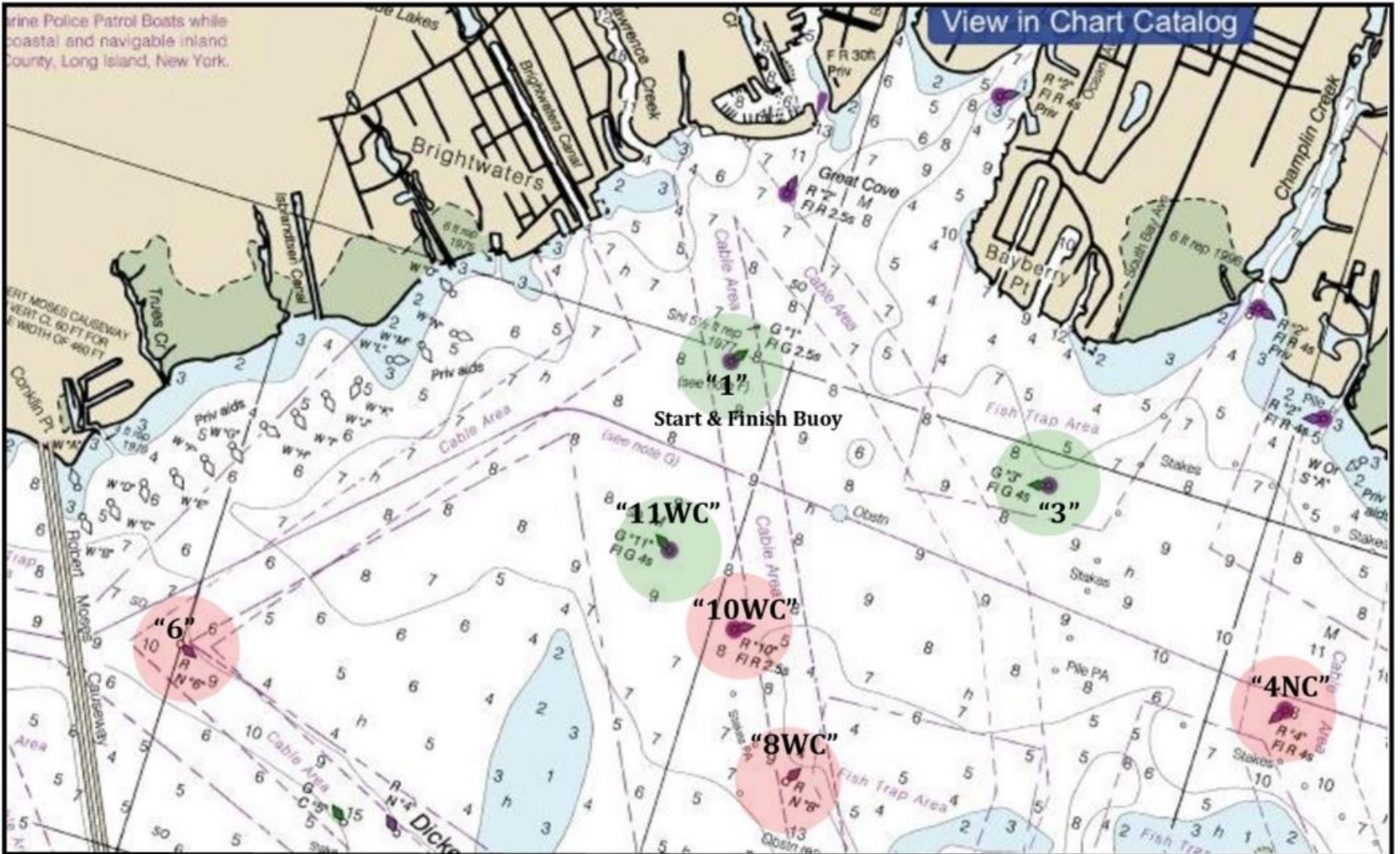
**13.2** It is highly recommended that all adult competitors (ages 18 and over) that are not aboard yachts having lifelines shall wear a properly fastened US Coast Guard approved Personal Floatation Device (PFD) while racing. Float coats and inflatable PFD's are permitted.

**13.3** All competitors on any PHRF boat that does not have lifelines shall wear PDF's as specified in Paragraphs 13.1 and 13.2 during the entire race.

**14 PRIZES:** Will be determined by the Race Committee and awarded at the BSYC Club house on Saturday afternoon approximately 1 hour after the last boat finishes.

**15 DISCLAIMER OF LIABILITY:** Competitors participate in the regatta entirely at their own risk. See Rule 4, Decision to Race. Bay Shore Yacht Club, its officers, employees, governors, agents, members, committees and volunteers will not accept any liability for material damage or personal injury or death sustained in conjunction with, prior to, during or after the Regatta.

# BAY SHORE INVITATIONAL RACE COURSES 2019



**Course 1 (2.91 nm)**

(NE, NW, S wind)  
Start at "1" port  
"10WC" port  
"3" port  
Finish at "1" port

**Course 2 (2.91 nm)**

(N, E, SE, SW wind)  
Start at "1" starboard  
"3" starboard  
"10WC" starboard  
Finish at "1" starboard

**Course 3 (3.64 nm)**

(N, NW, NE, SW wind)  
Start at "1" port  
"11WC" port  
"3" starboard  
"10WC" starboard  
Finish at "1" starboard

**Course 4 (4.26 nm)**

(N, S wind)  
Start at "1" port  
"11WC" port  
"8WC" port  
"10WC" starboard  
"1" starboard  
"10WC" starboard  
Finish at "1" starboard

**Course 5 (4.48 nm)**

(NW, E, S wind)  
Start at "1" port  
"10WC" port  
"4NC" port  
Finish at "1" port

**Course 6 (4.48 nm)**

(E, SE, W wind)  
Start at "1" starboard  
"4NC" starboard  
"10WC" starboard  
Finish at "1" starboard

**Course 7 (4.51 nm)**

(NW, SE wind)  
Start at "1" port  
"11WC" port  
"4NC" port  
Finish at "1" port

**Course 8 (4.51 nm)**

(E, SE, W wind)  
Start at "1" starboard  
"4NC" starboard  
"11WC" starboard  
Finish at "1" starboard

**Course 9 (4.76 nm)**

(SW wind)  
Start at "1" port  
"6" port  
"11WC" starboard  
"10WC" port  
Finish at "1" port

**Course 10 (4.82 nm)**

(NE, NW, SE, S wind)  
Start at "1" port  
"10WC" port  
"3" starboard  
"4NC" starboard  
Finish at "1" starboard

**Course 11 (4.82 nm)**

(N, NW, SE, SW wind)  
Start at "1" port  
"4NC" port  
"3" port  
"10WC" starboard  
Finish at "1" starboard

**Course 12 (5.59 nm)**

(E, W wind)  
Start at "1" starboard  
"3" starboard  
"11WC" port  
"6" starboard  
Finish at "1" starboard

**Course 13 (5.8 nm)**

(SW wind)  
Start at "1" port  
"6" port  
"11 WC" starboard  
"10 WC" port  
"3" port  
Finish at "1" port

**Course 14 (5.82 nm)**

(NE, NW, S wind)  
Start at "1" port  
"10WC" port  
"3" port  
"1" port  
"10WC" port  
"3" port  
Finish at "1" port

**Course 15 (5.82 nm)**

(N, E, SE, SW wind)  
Start at "1" starboard  
"3" starboard  
"10WC" starboard  
"1" starboard  
"3" starboard  
"10WC" starboard  
Finish at "1" starboard

Revised February 13, 2019 12:45 pm

