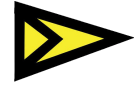


SAILING INSTRUCTIONS
MBYC OFFSHORE REGATTA #1
April 13, 2019



Organizing Authority is the *Maui Boat & Yacht Club*

1. RULES:

The race will be governed by the Racing Rules of Sailing (2017-2020); the prescriptions of US Sailing; the prescriptions of HYRA; (except as any of these are altered by this Notice of Race or the Sailing Instructions. **VHF radios and GPS are required equipment aboard all boats for this event.**

2. CHANGES TO SAILING INSTRUCTIONS

Any change in sailing instructions will be distributed at the skippers meeting **or on the water prior to the starting sequence.** If on water changes to the Sailing Instructions are needed they will be made by VHF Radio or by Hail and displaying the H Flag. **All competitors shall monitor VHF 71.**

3. NOTICE TO COMPETITORS

Notices to competitors will be distributed at the skippers meeting

4. SCHEDULE.

Mandatory Skippers Meeting at 0830 hours Saturday, April 13 at Lahaina Harbor in the vicinity of MB&YC's dock box near slip 25. The start will be at approximately 0930 hours. Make certain there is a crew member available to man VHF channel 71 and a GPS-synchronized time source.

5. RADIO COMMUNICATION

All competitors shall monitor VHF Channel 71

6. COURSE(S)

Because we can not count on the wind direction or strength, we are instituting an adjustable-course policy for this race. Course will be determined at the skippers meeting.

Attachment (A) is a NOAA chart with 12 points labeled A,B,C,D,E,F, G, H, J, K, W, and LF. The actual course will be some combination of these points plus a start/finish line to be determined at the skippers meeting prior to the race. The race may start at one point and end in another. All these variables will be discussed and defined at the skippers meeting. All skippers are encouraged to input all coordinates into their GPS prior to the race.

7. MARKS

Marks (if any) will be orange or yellow inflatable tetrahedron, or orange balls (dragon eggs), **or government buoys, or islets, or GPS coordinate virtual "marks". Actual marks and locations will be detailed at the skippers meeting.**

8. STARTING AND FINISHING LINES

It is 90% certain that there will be no committee boat present in this race. See #9 for starting instructions in the absence of a committee boat. If a committee boat is present the race will be started by conventional means and the starting line will be between marks "X" (tetrahedron) and "Y" (dragon egg) or "X" and the committee boat.

9. SPECIAL INSTRUCTIONS FOR STARTING IN THE ABSENCE OF THE RACE COMMITTEE

Start will proceed as follows: With all boats sailing to windward on the same tack with the smallest boat inside and the larger boats outside; there will be 3 horn blasts to warn of impending countdown, followed shortly by one blast to signify one minute to start; one additional blast will signal the start. Crew on the vessel selected at the skippers meeting to conduct the race will announce the pending start on channel 71 and they will mark the official start position on their GPS.

Sounds

- 3 horn blasts - One minute countdown will follow shortly
- 1 horn blast - 1 minute countdown begins
- 1 horn blast - START

10. FINISH

In the absence of the Race Committee at the finishing line, the boats shall finish by crossing the start/finish line and recording her GPS finish time. These times will be used by the club to calculate elapsed time and corrected time results.

If virtual Mark “B” is the finish, then pass close aboard Mark “B” keeping “B” to Starboard (Between Mark “B” and Shoreline) and take your own finish time.

If another virtual mark is selected for the finish, you must approach within a 3 boat length radius and take your own finish time.

Upon finishing call Bruce Olsten via cell phone at 264-1299 to report your finish time.

Last boat to finish picks up the start/finish mark if no committee boat present.

11. TIME LIMITS AND SHORTEN COURSE

The time limit for this race is 6 hours. All boats will take their own times as instructed in item #10 above. The first boat will make a reasonable attempt to notify all the other boats via VHF channel 71 or cell phone / message if they finish within the time limit. All skippers to provide cell #'s at skippers meeting. If no cell phone on board, that boat's skipper shall be responsible to monitor vhf 71.

12. WITHDRAWING

A withdrawing yacht leaving the race course shall notify the Race Committee by hail or by VHF radio.

13. SCORING

Scoring of the event shall be in accord with the PHRF Time-On-Distance Handicap system. The Low Point System as modified by HYRA will be used to score a yacht's regatta position. This race will count for season's points as long as a minimum of 3 boats rank as starters (come to the starting line).

MBYC's scoring protocol can be accessed at <https://goo.gl/hmYtAu>

14. INSURANCE

Each participating boat shall be insured with valid third-party liability insurance with a minimum coverage of \$300,000 per incident or the equivalent.

15. DISCLAIMER OF LIABILITY

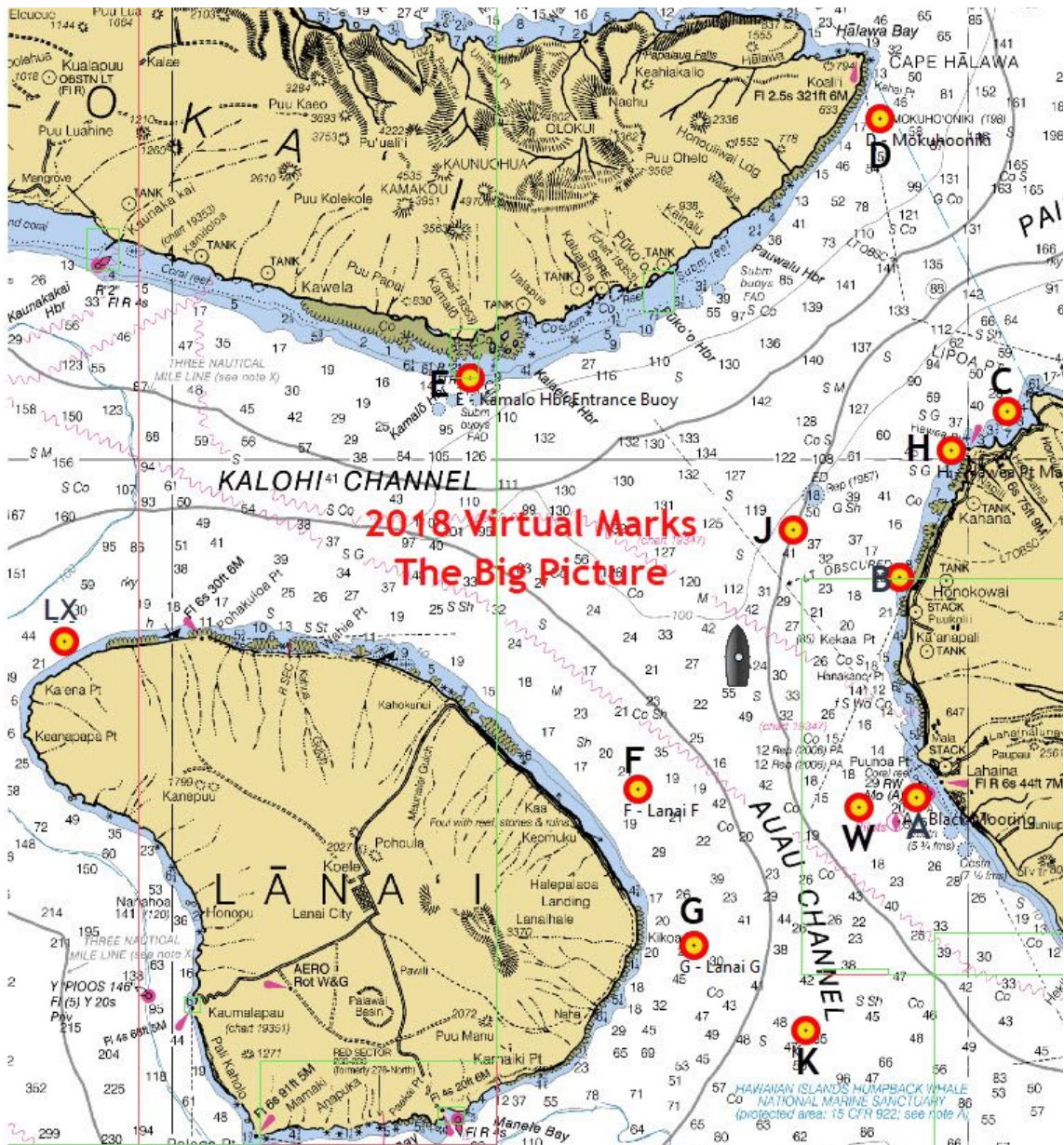
Competitors participate in the regatta entirely at their own risk. See RRS 4, Decision to Race. The organizing authority will not accept any liability for material damage or personal injury or death sustained in conjunction with or prior to, during, or after the regatta.

ATTACHMENT “A”

Mark Locations and coordinates in Degrees and Minutes.

After an observation of wind direction and strength, the race committee will designate which specific marks will be rounded in this race. **NOT ALL OF THE MARKS WILL BE USED.** It is the responsibility of the skipper to correctly ascertain from the race committee which “marks” have been chosen and the direction of rounding at the skippers meeting.

A Star/Finish line is not depicted on this diagram but may be placed by the PRO depending upon weather conditions. This will be determined and discussed at the Skippers Meeting.



Mark	Latitude	Longitude	Description
A	20 52.00 N	156 41.30 W	Black Mooring Ball
B	20 57.20 N	156 41.70 W	Honokowai Stream
C	21 01.10 N	156 39.00 W	Honolua
D	21 08.00 N	156 42.20 W	Mokuho'oniki Isl
E	21 01.90 N	156 52.50 W	Kamalo Entr Buoy
F	20 52.20 N	156 48.30 W	Lanai 1
G	20 48.50 N	156 46.90 W	Lanai 2
H	21 00.18 N	156 40.42 W	Hawea Point
J	20 58.30 N	156 44.40 W	Pailolo Offshore
W	20 51.76 N	156 42.72 W	2 miles off Lahaina Hbr
K	20 46.49 N	156 44.09 W	Auau Mid-Channel
LX	20 55.68 N	157 02.72 W	Lanai Finish

If the FINISH is at Virtual Mark "B", pass close aboard Mark "B" to Starboard
(Between Mark "B" and Shoreline)

