



2019 GYA OPENING REGATTA
Friday May 17 – Sunday May 19
Organizing Authority: Gulf Yachting Association (GYA)
Hosted by: Southern Yacht Club (SYC)
New Orleans, LA

Sailing Instructions

1 RULES

- 1.1 The regatta shall be governed by the rules as defined in the current *Racing Rules of Sailing* (RRS), and the *GYA Regulations for Sanctioned Events*; www.gya.org/documents/GYA2018Directory.pdf
- 1.2 The US Sailing Prescriptions to RRS 63.2 and 63.4 are deleted.
- 1.3 Only Capdevielle and Masters may change crews and helmsmen between races. If attending, open fleet vipers are also allowed to change Crews and Helmsmen between races.
- 1.4 Sailing Instructions for GYA Capdevielle and GYA Masters shall use these sailing instructions. Other race courses will use the Southern Yacht Club General Sailing Instructions available on the SYC Website.

2 Eligibility:

All yacht clubs which are current General Members, in good standing, of the GYA are eligible to participate in the Capdevielle Viper 640 class and the Masters Regatta for the Commodore John Dane Memorial Trophy in Flying Scots. All other classes are open to all sailors.

3 NOTICES TO COMPETITORS

- 3.1 Notices to competitors shall be posted on the official notice board located in the ground floor Lobby. At the end of each day of racing, the Race Committee (RC) shall post the end of the protest time as well as any RC actions. Notices of protest hearings and requests for redress shall be posted here within 20 minutes of the expiration of protest time.
- 3.2 Any questions regarding these Sailing Instructions (SI's) shall be submitted in writing to the regatta desk located in 2nd Floor Reception Lobby. Written answers shall be posted on the official notice board.

4 CHANGES TO SAILING INSTRUCTIONS

Any change to the SIs shall be posted 60 minutes before the scheduled start of the first race of the day it will take effect, except that any change in the schedule of races shall be posted by 1800 on the day before it will take effect.

5 SIGNALS MADE ASHORE

- 5.1 Signals made ashore will be displayed from the Dry Storage area "A" Frame.
- 5.2 When flag 'AP' is displayed ashore, '1 minute' is replaced with 'not less than 30 minutes.' This changes RRS race signals AP.

6 SCHEDULE OF RACES

- 6.1 For Capdevielle and Open Viper 640s, five (5) races are scheduled.
- 6.2 For the GYA Masters and Open Scots, three (3) races are scheduled.
- 6.3 For the Fish fleet, three (3) races are scheduled.
- 6.4 For all dinghy fleets on Course 3 & 4, five (5) races are scheduled.
- 6.5 For ALL fleets, one (1) completed race constitutes a regatta.

Saturday	1230 1355	Competitor's Meeting – Ground Floor Tiki Bar Warning signal for the first race of the day, all courses. Additional races to immediately follow.
Sunday	1025	Warning signal for the first race of the day, all courses. Additional races to immediately follow.
	1500	No initial warning signal may be made after this time
	ASAP after racing	Trophy Presentation – Ground Floor Tiki Bar

6.7 The warning signal for the second and subsequent races of each day shall be made as soon as practical after the finish of the first race and after any necessary crew changes.

7 CLASS FLAGS

- 7.1 COURSE 1 - Capdevielle Viper 640 - GYA burgee
Viper 640 Open fleet – Viper 640 class flag
Masters & Open Flying Scot fleets – Flying Scot class flag
- 7.2 COURSE 2 See SYC General Sailing Instructions
- 7.3 COURSE 3 Fish - Fish class flag
Laser Full & Radial fleets-Laser Radial class flag
Club 420 - 420 class flag
Sunfish- Sunfish class flag
- 7.4 COURSE 4 Optimist
- 7.5 The order of starts will be provided at the competitor's meeting.

8 RACING AREA

- 8.1 For Course 1: NW of SYC – See attached Diagram
- 8.2 For Course 3: NE of SYC – See attached Diagram
- 8.3 For Course 4: N of SYC – See attached Diagram

9 CHECK IN

Prior to the warning signal for the first race of the day, each boat shall sail past the stern of the RC signal boat and hail her sail number until acknowledged by the RC. Failure to do so may result in a 20% penalty in the first race. (DP) This modifies RRS A5.

10 THE COURSES

- 10.1 The diagrams in Attachment A show the race courses, the order in which they are to be passed, and the side on which each mark is to be left.
- 10.2 On Course 1 & 3, no later than the warning signal, the RC will display the course to be sailed and approximate compass bearing of the first leg.
- 10.3 On Courses 4, no compass bearing will be displayed.

11 MARKS

- 11.1 Marks 1 and 2g (gate) will be an orange tetrahedrons. Mark 1a (offset) will be an orange ball.
- 11.2 The starting marks will be a RC boat and a nearby orange ball mark.
- 11.3 New marks will be yellow tetrahedrons.
- 11.4 The finish marks will be an orange or red ball, and a RC boat displaying an orange flag.

12 THE START

- 12.1 Races will be started in accordance with RRS 26.
- 12.2 The starting line will be between a staff displaying an orange flag on the RC signal boat and the course side of the starting mark.
- 12.3 A boat starting later than five (5) minutes after her starting signal shall be scored Did Not Start (DNS). This modifies RRS 63.1, A4, and A5.
- 12.4 If any part of a boat's hull, crew or equipment is on the course side of the starting line before her starting signal and she is identified, the RC may broadcast her sail number on a VHF radio. The

failure of any boat to hear the hail, the untimely hail of some or all OCS boats, the order of the hail, or the failure to hail any or all boats shall not be grounds for redress. This modifies RRS 62.1(a).

13 CHANGE OF THE NEXT LEG OF THE COURSE

To change the next leg of the course, the RC shall lay a new mark (or move the finish line) and remove the original mark as soon as practicable. When in a subsequent change a new mark is replaced, it shall be replaced by an original mark.

14 THE FINISH

14.1 The finishing line will be between a staff displaying an orange flag on a RC boat and the course side of a nearby mark.

15 PENALTY SYSTEM

Appendix V, 'Alternative Penalties,' shall apply. This changes RRS 44.1.

16 TIME LIMITS

16.1 The time limit for the first boat to reach the first weather mark is 30 minutes.

16.2 The time limit for the first boat to finish is 90 minutes.

16.3 Boats still racing and failing to finish within 20 minutes after the first boat sails the course and finishes, shall be scored Time Limit Expired (TLE). This changes RRS 35, A4, A5 and A11.

17 PROTESTS & REQUESTS FOR REDRESS

17.1 Protests forms shall be available at the regatta desk. Protests, request for redress and request for reopening shall be delivered there within the posted protest time limit.

17.2 The protest time limit is 90 minutes after the last boat has finished the last race of the day, in each fleet, or the RC signals no more racing today, whichever is later. The protest time limit shall be posted on the official notice board.

17.3 Notices of protests and requests for redress shall be posted as soon as possible, but no later than 20 minutes after the protest time limit, to inform competitors of hearings in which they are parties or named as witnesses.

17.4 Hearings will be held in the SYC Board Room and will be heard in approximately the order of receipt.

17.5 On the last scheduled day of racing, a request for redress based on a Protest Committee decision shall be delivered no later than 30 minutes after the decision was posted. This is in addition to the requirements of RRS 62.2.

18 SCORING

18.1 The Low Point scoring system of RRS A4 will apply, except that no scores shall be excluded. This changes RRS A2.1.

18.2 A score of TLE will be two points more than the last boat to finish within the time limit, but not worse than last place. This changes RRS A4 and A11.

19 SAFETY REGULATIONS

19.1 Capdevielle competitors shall comply with GYA Section D, Regulation 6, including the use of USCG PFD's.

19.2 **All** boats shall comply with USCG and State safety equipment regulations. It is the responsibility of each skipper to determine if they should start a race or continue racing. This does not supersede any class rules or regulations that may require wearing life jackets while on the water. A boat which retires from a race shall notify the RC before leaving the racing area, or if that is not possible, at the first reasonable opportunity.

19.3 In the interest of safety or to avoid unreasonable delays, the RC, at its discretion and with concurrence of the judges, may order a capsized boat rescued and scored DNF.

20. DISCLAIMER OF LIABILITY

Competitors participate in the regatta entirely at their own risk. See RRS 4, Decision to Race. Neither the Organizing Authority, nor the host club, nor the race officials, shall accept any liability for material damage or personal injury or death sustained in conjunction with, prior to, during, or after the regatta.

21 SUPPORT BOATS

Team leaders, coaches and other support persons shall stay at least 100 yards outside the areas where boats are racing, from the time of the preparatory signal until all boats have finished or retired or the RC signals a postponement, general recall, or abandonment.

22 RADIO COMMUNICATIONS

22.1 The Race Committee will operate on and monitor the following VHF Channels: Course 1 - VHF 69, Course 2 - VHF 68, Course 3 - VHF 71, Course 4 – VHF 72,

22.2 Except in an emergency, a boat that is racing shall not make voice or data transmissions and shall not receive voice or data transmissions that are not available to all boats. This includes the use of cell phones.

23 TROPHIES

Trophies for Capdevielle and Viper 640 GYA Masters Flying Scot, will be awarded in compliance with GYA Regulation 23 & 26.6. The trophies for one design fleets will be awarded for first place and may be awarded for additional places depending on the number of boats competing in the class.

24 CONTACTS:

Regatta Chair: Robert (Duff) Friend dfriend@LatterBlum.com (504) 909-7351

Principle Race Officer: George Hero GHero@GeorgeHero.com (504) 427-5856

GYA Chief Measurer: Claude H. Dannemann, Jr. (BWYC) (228) 493-0110

Chief Judge: Lloyd Causey Lloyd@causey.com (985) 517-6041

Yacht Club Contact Information:

Southern Yacht Club

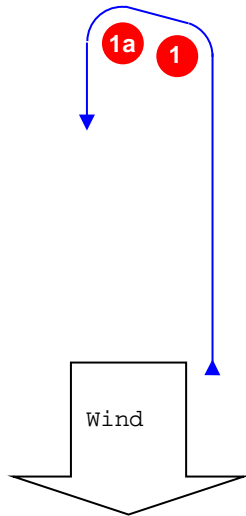
105 North Roadway

New Orleans, LA 70124

(504) 288-4200

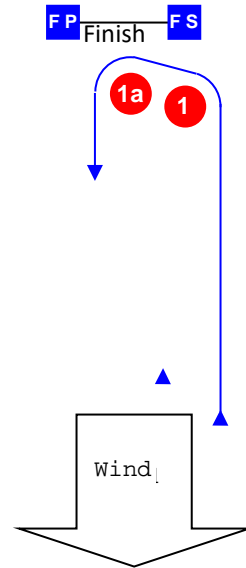
<http://www.southernyachtclub.org/>

Attachment A – Course Diagrams



Course: Leeward finish

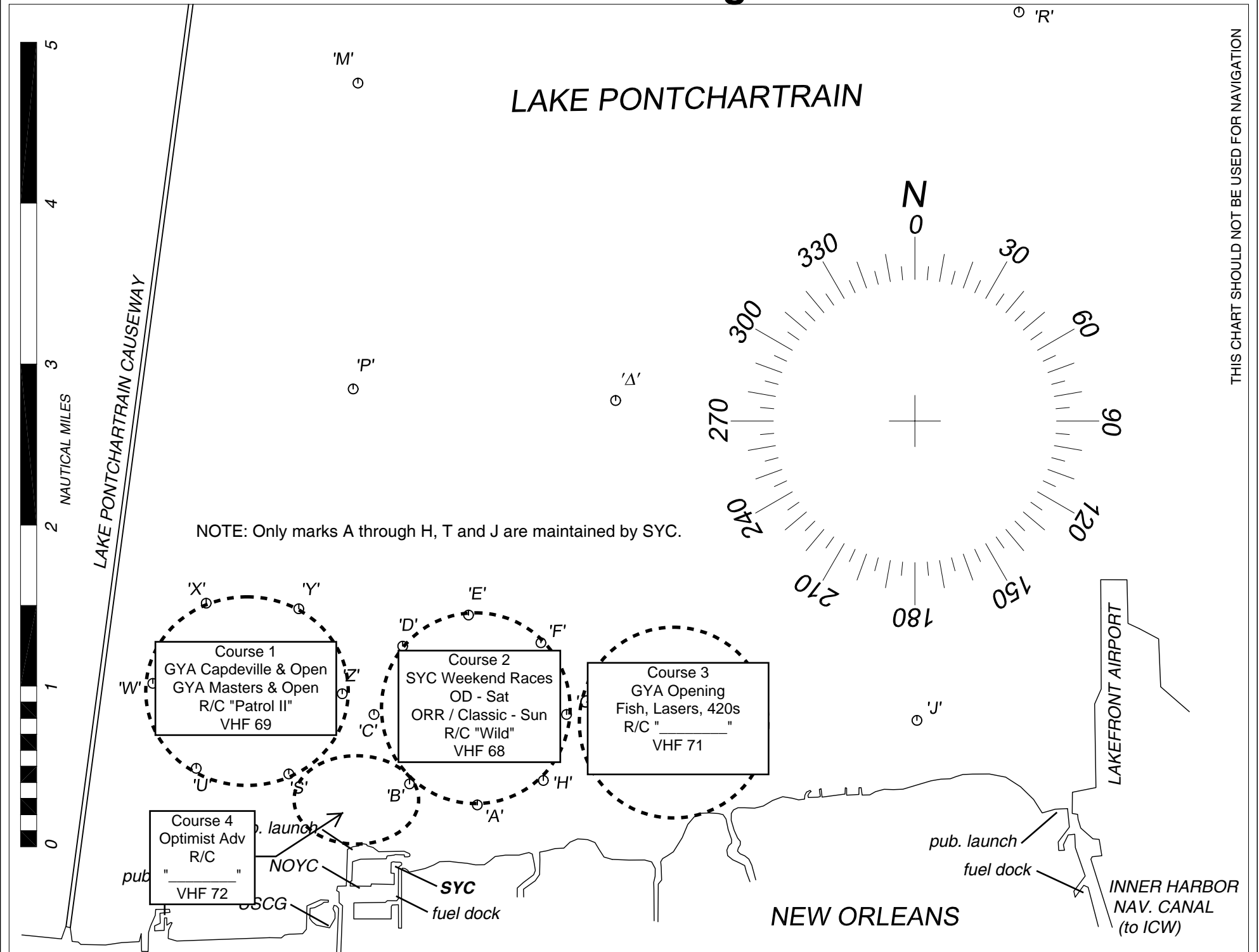
Signal	Mark Rounding Order
WL4	Start – 1 – 1a – 2g – 1 – 1a – Finish
WL6	Start – 1 – 1a – 2g – 1 – 1a – 2g – 1 – 1a – Finish



Course: Windward Finish

Signal	Mark Rounding Order
WL3	Start – 1 – 1a – 2g – Finish
WL5	Start – 1 – 1a – 2g – 1 – 1a – 2g – Finish

Chart of SYC Racing Marks



THIS CHART SHOULD NOT BE USED FOR NAVIGATION