



*Waikiki Yacht Club*  
1599 Ala Moana Blvd  
Honolulu, Hawaii, 96814  
808.995.4405 | [regatta@waikikiyachtclub.com](mailto:regatta@waikikiyachtclub.com)

## **Sailing Instructions**

### **D.J.JOHNSON AROUND OAHU REGATTA**

**May 25<sup>th</sup>, 26<sup>th</sup> & 27<sup>th</sup>, 2019**

#### **1. RULES:**

- 1.1. The regatta will be governed by the rules as defined in the Racing Rules of Sailing (RRS), the prescriptions of US SAILING, pertinent Class/Fleet Rules, by the Waikiki Yacht Club Standing Sailing Instructions, the Notice of Race and these Sailing Instructions.
- 1.2. The RRS are changed as follows:
  - 1.2.1. Rule 52 - The use of powered winches is authorized.
  - 1.2.2. Rule 49 does not apply to Multihulls.
  - 1.2.3.6.4 Redress: RRS 60, 63.2, 63.4, US Sailing Prescriptions to RRS 60 (Participation Committee composition) are deleted.
  - 1.2.4. Rule 55 does not apply for spinnaker stopping materials only. It still applies to trash.
- 1.3. While racing, each competitor will make their position available to the Race Committee via RaceQs app. Competitors are prohibited from tracking one another while racing via RaceQs app.

2. **NOTICES TO COMPETITORS:** Notices to competitors will be posted on the official notice board located in the WYC on the regatta board for the first day, on the KYC bulletin board for the second day and available from the Race Committee boat for the third day.

3. **CHANGES TO THE SAILING INSTRUCTIONS:** Any change to the sailing instructions will be posted before 0900 on the day it will take effect. Except on the third day, they will be passed out from the race committee boat.

4. **SIGNALS MADE ASHORE:** Signals made ashore will be displayed from the WYC flagpole for day one, the KYC flagpole for day two and all signals will be made from the race committee boat on day three.

#### **5. SCHEDULE OF RACING:**

See appendix A for Saturday, May 25<sup>th</sup>, 2019.

See appendix B for Sunday, May 26<sup>th</sup>, 2019

See appendix C for Monday, May 27<sup>th</sup>, 2019

#### **6. PROTESTS AND REQUESTS FOR REDRESS**

- 6.1 Protest forms are available at WYC. Protests and requests for redress or reopening shall be delivered there within the appropriate time limit.
- 6.2 Protests will be heard in approximately the order received as soon as possible.
- 6.3 Protests on incidents occurring on Day 2 will be heard immediately after the Day 3 race.
- 6.4 Protest notices will be posted within 30 minutes of the protest time limit to inform competitors where and when there is a hearing in which they are parties or are named as witnesses.

**7. REQUIREMENTS FROM DNLR:**

7.1 Our permit does not authorize the use of any beach parks or facilities, please contact city parks at 768-3440 or appropriate agencies.

7.2 All boats shall follow all navigational rules at all times while in the ocean waters.

7.3 Each boat operator shall have passed the boater safety education class and have their boater safety education card on them during the use of the motorized vessels.

7.4 Participants shall take all precautions during the event and be aware that there are multiple events occurring on the same days throughout Oahu ocean waters.

**8. FURTHER INFORMATION;**

Gary Evoniuk 919 599 3111 or [rc-sail@waikikiyachtclub.com](mailto:rc-sail@waikikiyachtclub.com)

Sean Doyle 808 389 6435 or [seanpdoyle@gmail.com](mailto:seanpdoyle@gmail.com)

## APPENDIX A

May 25, 2019

Day 1

**Racing Area:** The racing area will be off the leeward and windward shores of Oahu

**The Course:** The course will be Start – DH to port – Finish. Boats shall pass all islands to seaward, except Moku Manu, which may be passed on either side. Approx. 27 NM.

**Signals:** Class Flags as described below will be displayed for each classes Warning Signal.

PH A & B	Black with #1
PH X	Pink with X
Multihulls	Blue with M

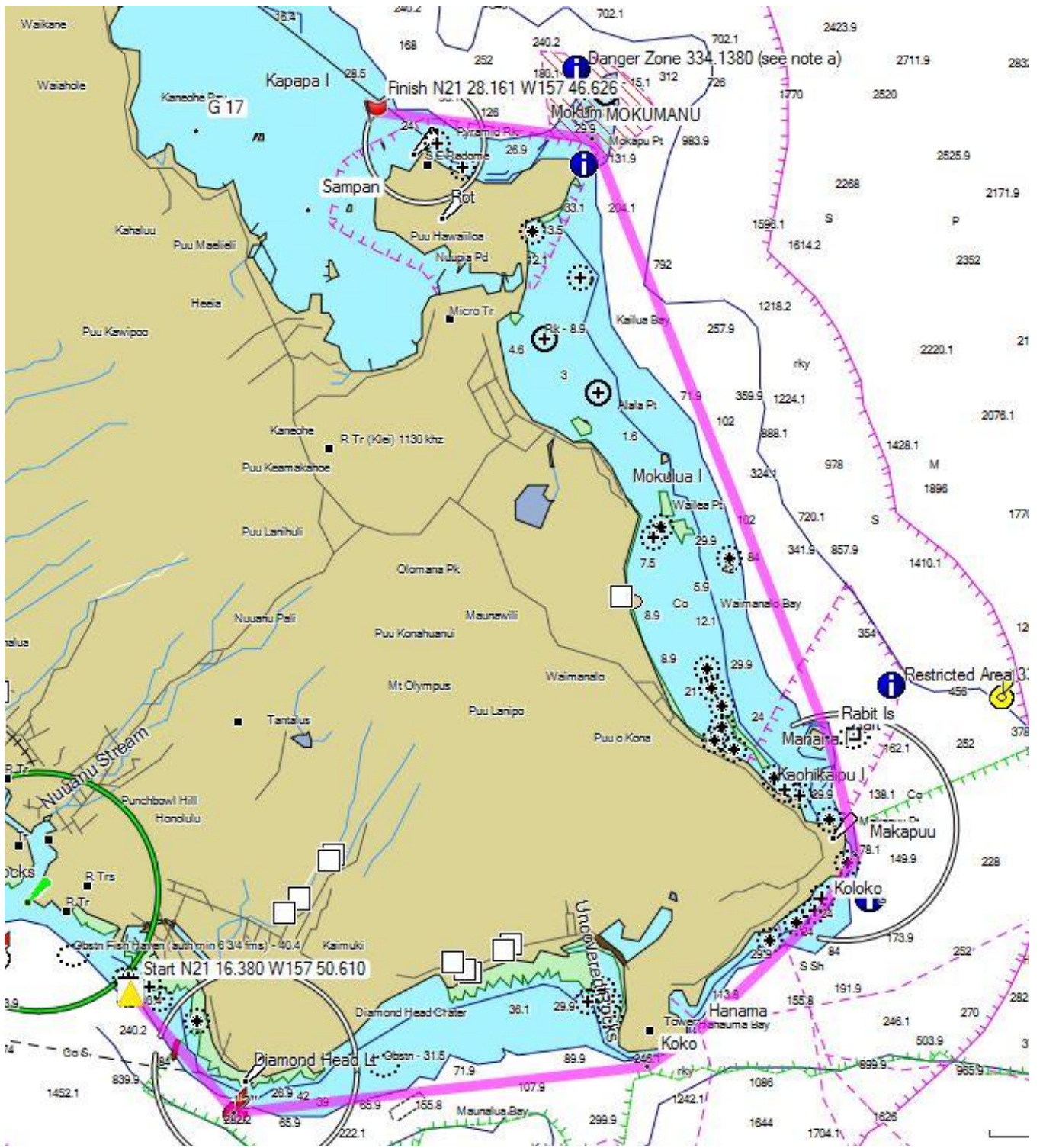
**The Start:** The start will be located approx. ¼ mile southeast of the Ala Wai Harbor Entrance. The Starting Line will be between two yellow inflatable buoys. A boat shall not start later than 10 minutes after her starting signal.

<u>Class</u>	<u>Warning</u>	<u>Start</u>
PH A & B	0955	1000
PH X	1005	1010
Multihulls	1015	1020

**The Finish:** The finish is at Kaneohe Bay Sampan channel entrance. The finish line is between the Sampan Channel entrance buoy R2 and R4 with R2 to starboard. The Race Committee Boat will be on station in the Sampan Channel. Boats may communicate on **VHF Channel 68** with Race Committee to verify their finish times. Boats finishing when the Race Committee is not on station shall finish and report their finish times (time of day in HH:MM:SS) to the Race Committee, on VHF Channel 68 or by telephone at (919) 599-3111 to Gary Evoniuk, within one hour of finishing.

**Safety:** Any boat that starts but returns to Waikiki rather than finishing at KYC should contact Race Committee by VHF Channel 68 or by phone at (919) 599-3111.

**Entering into Kaneohe Bay and Mooring:** Boats with a draft over 7 ft. should use the Main Ship Channel to enter Kaneohe Bay. Contact Ike Eichelberger regarding mooring at Kaneohe Yacht Club at least one week prior (808 542 1982).



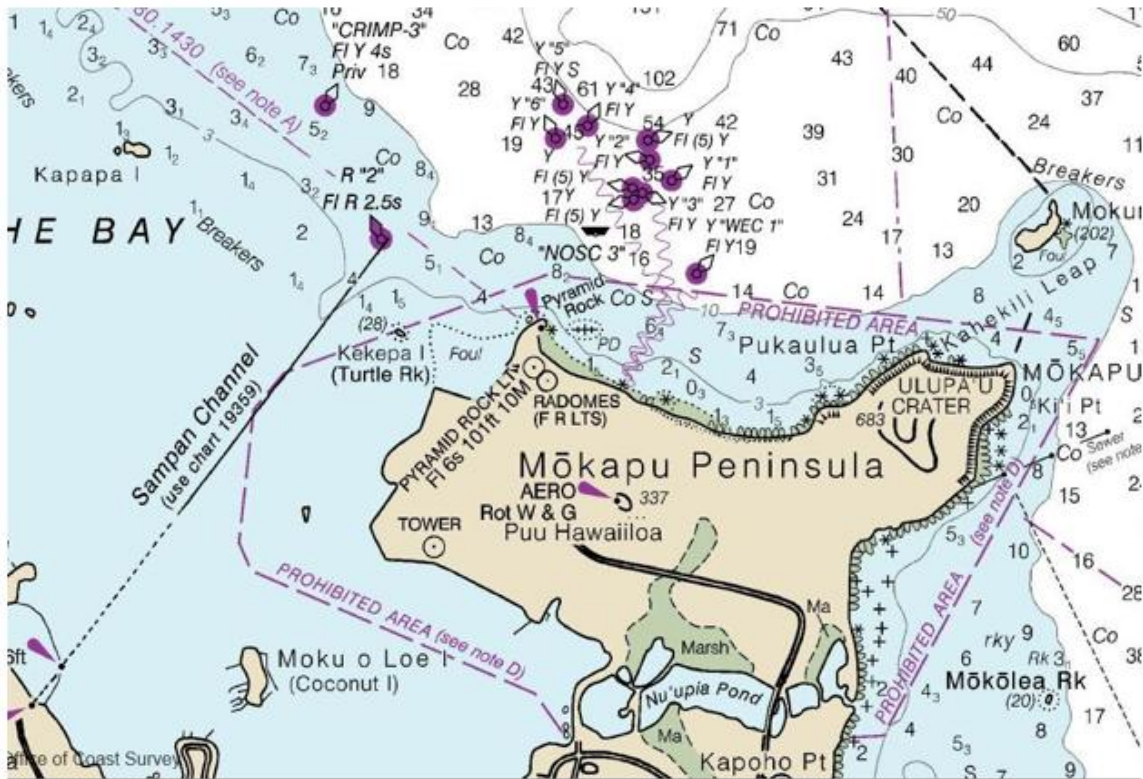
Note: NOAA Chart 19359, found at: <http://www.charts.noaa.gov/OnLineViewer/19359.shtml>

NOAA Chart 19359 12<sup>th</sup> Ed., Jul. 2007. Last Correction: 08/25/2016. Cleared through: LNM: 0717 (2/14/2017, NM: 0817 (2/25/2017)



Note: NOAA Chart 193579, found at: <http://www.charts.noaa.gov/OnLineViewer/19357.shtml>

NOAA Chart 19357 25<sup>th</sup> Ed., Mar. 2013. Last Correction 1/11/2017. Cleared through: LNM: 0717 (2/14/2017, NM: 0817 (2/25/2017))



## APPENDIX B

May 26, 2019

Day 2

**Racing Area:** The racing area will be off the windward and north shores of Oahu.

**The Course:** The course will be: Start – Mark X to port - Exit Kaneohe Bay via the Main Ship Channel - Finish at entrance to Haleiwa Harbor – Approx. 33 NM.

**Marks:** Mark X will be an inflatable buoy set approximately ½ mile windward of the start line.

**Signals:** Class Flags as described below will be displayed for each class's Warning Signal.

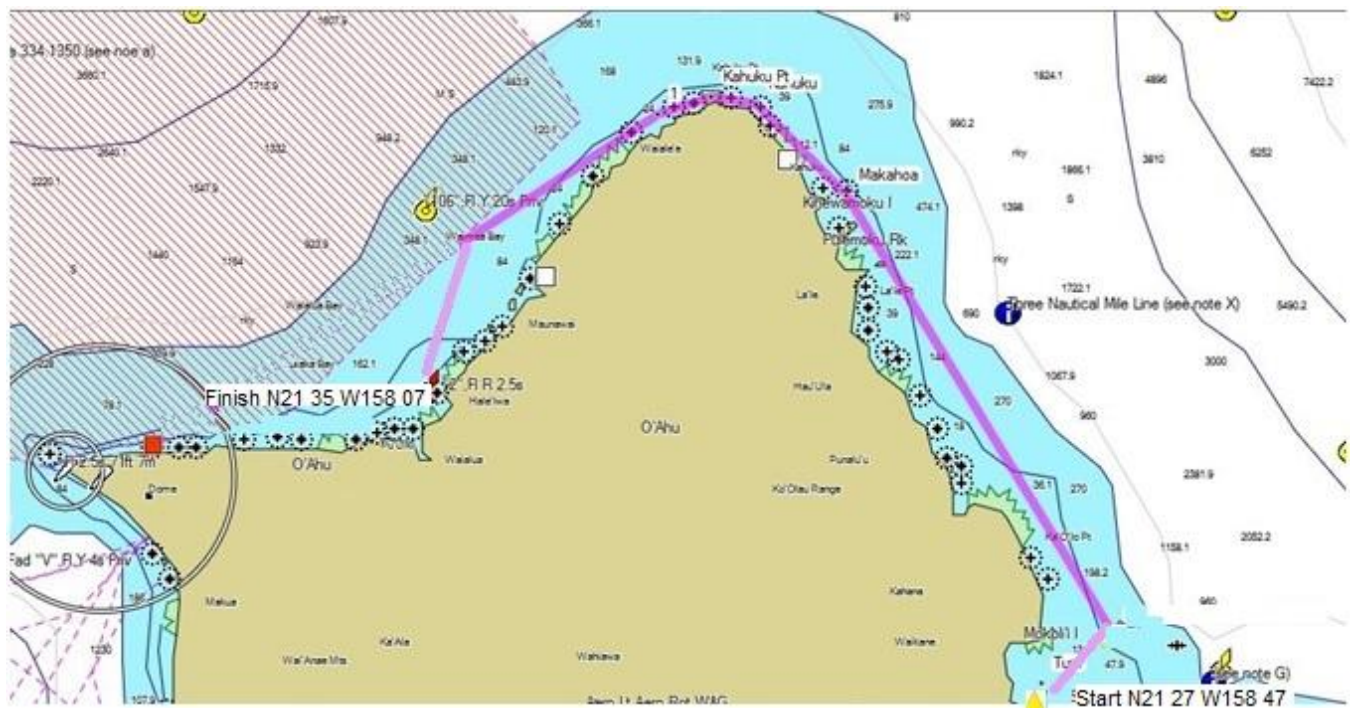
PH A & B	Green or Black with #1
PH X	Yellow or Pink with X
Multihulls	Blue or Blue with M

**The Start:** The starting line will be between an orange floating pylon and flag and the staff of an orange flag on the Race Committee Boat located inside the primary racing area of Kaneohe Bay near Mokapu and Coconut Island. A boat shall not start later than 10 minutes after her starting signal.

<u>Class</u>	<u>Warning</u>	<u>Start</u>
PH A & B	0955	1000
PH X	1005	1010
Multihulls	1025	1030

**The Finish:** The finish line will be at the entrance to Haleiwa Harbor between R2 and the staff of an orange flag on the Race Committee Boat on station abeam of R2. Boats may communicate on **VHF Channel 68** with Race Committee to verify their finish times. Boats finishing when the Race Committee is not on station shall finish and report their finish times (time of day abeam of R2 in HH:MM:SS) to the Race Committee on VHF Channel 68 or by telephone at (919) 599-3111 to Gary Evoniuk, within one hour of finishing.

**MOORING:** Contact Sean Doyle to assist in arranging mooring at Haleiwa, Wainae or Pokai. It is each entrant's responsibility to secure mooring for the second day. Mooring applications can be filed at any of the state harbors. Required documents include but are not limited to: vessel registration, vessel proof of insurance and photo identification.





## APPENDIX C

May 27, 2019

Day 3

**Racing Area:** The racing area will be off the leeward shore of Oahu.

**The Course:** The course will be Start - BP buoys 1 & 2 to port – Pearl Harbor buoys 1 & 2 to port – HH to port – Finish at Ala Wai Channel entrance. Approx. 19 NM

**Areas That Are Obstructions:** Note the Prohibited area as indicated on attachment 1.

**Signals:** Class Flags as described below will be displayed for each class's warning signal.

PH A & B	Black with #1
PH X	Pink with X
Multihulls	Blue with M

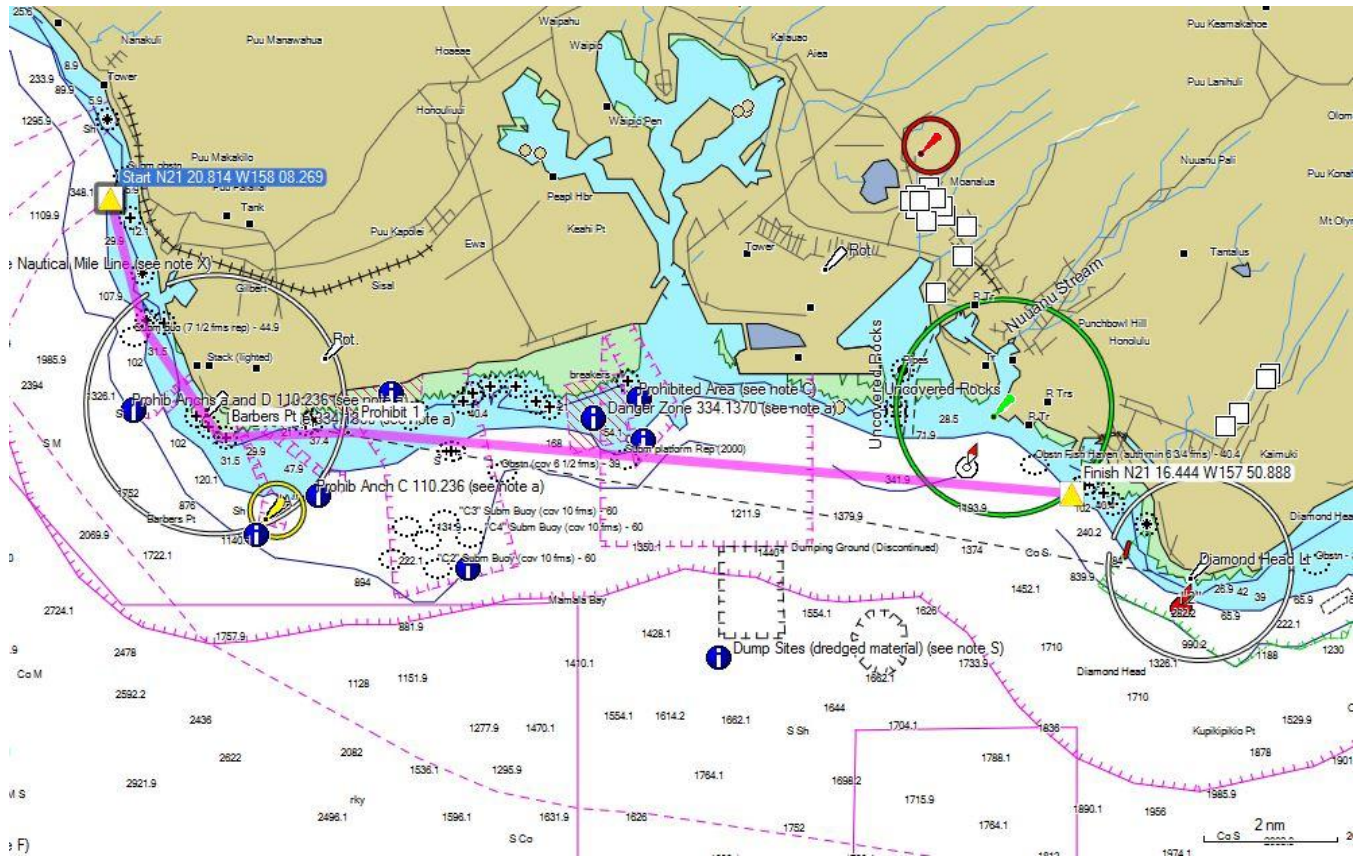
**The Start:** The Starting Line will be between a yellow inflatable buoy and the staff of an orange flag on the Race Committee Boat. It will be located to seaward of Kahe Power Plant. A boat shall not start later than 10 minutes after her starting signal.

<u>Class</u>	<u>Warning</u>	<u>Start</u>
PH A & B	1155	1200
PH X	1105	1210
Multihulls	1115	1220

**The finish:** The finish line will be between G1 and the staff of an orange flag on the Race Committee Boat. Boats may communicate on **VHF Channel 68** with Race Committee to verify their finish times. Boats finishing when the Race Committee is not on station shall finish and report their finish time (time of day in HH:MM:SS) to the Race Committee (time of day G1 and R2 abeam in HH:MM:SS) on VHF Channel 68 or by telephone at (919) 599-3111 to Gary Evoniuk, within one hour of finishing.

**Prizes:** Prizes will be awarded at approximately 1800 at WYC.

# Attachment 1





N21 16 25.8 W158 06 01.8  
PROHIBITED AREA

N21 17 21.0 W158 03 57.0

N21 16 28.2 W158 03 30.0

N21 15 31.6 W158 05 33.6

Image NASA  
Image © 2008 TerraMetrics  
© 2008 Tele Atlas

Google