

**Organizing Authority: The Houston Yacht Club, Shoreacres, Texas**

## **SAILING INSTRUCTIONS**

### **1. RULES**

- 1.1 The regatta will be governed by the rules as defined in *The Racing Rules of Sailing*.

### **2. NOTICES TO COMPETITORS**

- 2.1 Notices to Competitors will be posted on the official "HYC Race Information" notice board located in the breezeway adjacent to the offices of The Houston Yacht Club.

### **3. CHANGES TO SAILING INSTRUCTIONS**

- 3.1 Any change to these Sailing Instructions will be posted before 0800 on the day it will take effect, except that any change to the schedule of races will be posted by 2000 on the day before it will take effect.

### **4. SIGNALS MADE ASHORE**

- 4.1 Signals made ashore shall be displayed from the signal staff on the lawn of The Houston Yacht Club.
- 4.2 When flag AP is displayed ashore, "1 minute" is replaced with "not less than 60 minutes" in the race signal AP. This changes RRS Race Signals.
- 4.3 Signal flags may be flown either alone or over one or more numeral pennants. Individual lines will be designated by following pennants:
- 4.3.1 When flag AP over "1" pennant is displayed, the signal applies to the Windward/Leeward Line .
- 4.3.2 When flag AP over "2" pennant is displayed, the signal applies to the Pursuit Line.
- 4.3.3 When flag AP over "4" pennant is displayed, the signal applies to the Distance Line.
- 4.3.4 If no Numeral Pennant is displayed, the signal pertains to all lines. This changes RRS Race Signals.

### **5. SCHEDULE OF RACES**

- 5.1 Races will be sailed according to the schedule in the Notice of Race. All times are GPS times.
- 5.2 Flag A displayed, with no sound, while boats are finishing means "No more racing today".

### **6. CLASS FLAGS**

- |                |                      |
|----------------|----------------------|
| 6.1 Ensign     | Ensign Class Flag    |
| J/105          | Yellow Flag          |
| J/22           | Green Flag           |
| Optimist Green | Green Flag           |
| Optimist RWB   | Red Flag             |
| Lightning      | Lightning Class Flag |

## **7. RACING AREA**

- 7.1 The Windward-Leeward line will be located South of the Bayport Channel.
- 7.2 All other classes will sail around designated marks in the area bounded by Morgan's Point on the north, the San Leon shoreline on the south, the Houston Ship Channel on the east and the La Porte/Shoreacres shore line on the west. The racing area is shown in Attachment A.
- 7.3 Boats shall not enter any Ship Channel while racing. Ship Channels are designated as obstructions.

## **8. CHECK IN**

- 8.1 Prior to the warning for the first race of each day, each boat shall check-in with, and be recognized by, the Race Committee (R/C) Signal Boat displaying the code Flag "L," by passing close astern, on starboard tack and hailing her sail number.
- 8.2 Pursuit Course racers are welcome to hail the Race Committee by VHF radio on the Pursuit Line channel. Please include your PHRF rating and spinnaker, or non-spinnaker class as part of your check-in. If you are registering for the regatta at the start line, please notify the Race Committee at this time.

## **9. THE COURSES**

- 9.1 The Windward/Leeward Line - South of the Bayport Ship Channel  
No later than the warning signal, the Race Committee Signal boat will display a numeral pennant indicating the number of legs to be sailed. All marks shall be rounded leaving the mark to port. If there is no gate, the downwind rounding will be the starting line pin. See Attachment C.
- 9.2 The Pursuit and Distance lines - North of Bayport Ship Channel  
9.2.1 Attachment B shows the courses and the order in which the marks are rounded.  
9.2.2 No later than the warning/preparatory signal, the Race Committee Signal Boat will display a numeral pennant indicating the course to be sailed (See Attachment B).

## **10. MARKS**

- 10.1 The Windward/Leeward Line  
10.1.1 The windward mark will be a yellow tetrahedron and an offset.  
10.1.2 New marks as provided in instruction 13 will be orange tetrahedrons.
- 10.2 The Pursuit and Distance lines  
The Pursuit Line mark layout is shown in Attachment A.
- Mark #1, is the "The Judges Stand" located approximately: **29° 37.367'N, 94° 59.726'W**
  - Mark #2, is the "High Range" located at approximately: **29° 37.790'N, 94° 58.214'W**
  - Mark #3, a large YELLOW tetrahedron located approximately: **29° 39.833'N, 94° 58.919'W**
  - Mark #4, a large YELLOW tetrahedron located at approximately: **29° 38.839'N, 95° 00.114'W**

## **11. THE START**

- 11.1 The Windward/Leeward Line  
11.1.1 Races will be started by using RRS 26.  
11.1.2 The starting line will be between a staff displaying an orange flag from the signal boat on the starboard end and a mark or floating shape at the port end.

- 11.2 The Pursuit and Distance lines
- 11.2.1 The **Pursuit** start line will be between a staff displaying an orange flag on a race committee vessel and the course side of the starting mark.
- 11.2.2 The **Distance** start line will be between the stern of the race committee vessel and the course side of the starting mark.
- 11.2.2 The **Pursuit start** is staggered, based on the boat PHRF handicap. The Warning/Preparatory signal, as well as the starting times for all competitors will be provided at the competitor's briefing. The Warning/Prep Signal is anticipated to be on the hour or on even 10 min increments. (EG 1100, 1110, 1120, 1130 ....). Warning/Prep Signals for the First Race each day is anticipated to be at 1100. Warning/Prep Signal time after Postponement or for additional races will be announced on **VHF Channel 72**. The Warning/Preparatory signal is the display of the orange line flag.
- 11.2.3 The Distance line will feature a rule 26 start. The beginning of the sequence will be signaled by the Race Committee by raising the class flag.
- 11.3 Any boat whose preparatory signal has not been made shall keep clear of the starting area and of any boat whose preparatory signal has been made.
- 11.4 A boat shall start no later than 10 minutes after her assigned starting time.
- 11.5 The Race Committee may elect to trail a line (not to exceed 30') attached to a floating object, behind the Race Committee boat or elect to attach a buoy to the boat's anchor marking the anchor and the anchor rode (of up to approximately 50'). The floating object and its line shall be considered to be part of the Race Committee boat and hitting the floating object or running over the line shall be treated as hitting the Race Committee boat.

**12. RECALLS**

12.1 Recalls will be signaled in accordance with RRS 29.

12.2 As a courtesy, the Race Committee will attempt to hail boats "On Course Side" (OCS) as soon as possible after the start. The Race Committee may use VHF radios or loud hailer.

12.3 The failure of electronic equipment, failure to hear a hail, order of hail, or delay in hailing will not be grounds for redress. This modifies RRS 62.1(a).

LEUKEMIA CUP PURSUIT COURSE START TIMES (Based on an 11:00 am warning signal)							
Boat	Handicap	Course Option (NM)					
		6.4	8.6	8.8	10.5	11.8	13.6
Morning Star	244	11:05:36	11:07:28	11:07:28	11:09:20	11:10:16	11:12:08
Slow Lane	180	11:12:00	11:16:00	11:16:00	11:20:00	11:22:00	11:26:00
Endless Summer	177	11:12:18	11:16:24	11:16:24	11:20:30	11:22:33	11:26:39
Alessandra	138	11:16:12	11:21:36	11:21:36	11:27:00	11:29:42	11:35:06
Redhead	131	11:16:54	11:22:32	11:22:32	11:28:10	11:30:59	11:36:37
Non Sequitor	90	11:21:00	11:28:00	11:28:00	11:35:00	11:38:30	11:45:30

12.4 The Pursuit line

12.4.1 Code flag X will be displayed for a short period of time, and such length of time shall be at the discretion of the Race Committee, for the Pursuit Line. This changes RRS 29. The length of time that Code flag X is displayed will not be grounds for redress. This changes RRS 62.1(a).

12.4.2 Pursuit Line start times are GPS time, which governs. All boats will be responsible for determining their exact start time, and no start times will be announced or signaled from the Race Committee boat. The Race Committee will monitor start times of each boat. OCS boats have the option of returning to the start line and restarting, or shall take the penalty as shown in the table below. The penalty will be assessed at scoring. This changes RRS 29.1 and Appendix A.

0 to 10 sec early	penalty of 30 seconds
10 to 30 sec early	penalty of 1 minute

30 to 1 min early	penalty of 3 minutes
1 min to 2 min	penalty of 10 minutes
More than 2 min	Did Not Start

**13. CHANGE OF THE POSITION OF THE NEXT MARK**

**13.1 The Windward/Leeward Line**

To change the next leg of the course, the Race Committee will lay a new mark (described in Section 10.1) and remove the original mark as soon as practicable.

**14. SHORTENED COURSE**

**14.1 The Windward/Leeward Line**

Rule 32 is in effect. If the course is shortened, the Race Committee Signal Boat will be in the original starting position and will not relocate to the opposite side of the finish mark.

**14.2 The Pursuit and Distance lines**

The Race Committee may shorten the course at one of the marks described in Section 10.2 of these Sailing Instructions. This changes RRS 32.2.

**15. THE FINISH**

**15.1 The Windward/Leeward Line**

The Finish Line will be between a staff displaying an orange flag on the Race Committee boat on the port end and a floating shape.

**15.2 The Pursuit and Distance lines**

The Finish Line will be between a staff displaying an orange flag on a Race Committee boat and the course side of the finish mark. The Race Committee will record the order of finish.

**16. TIME LIMITS**

16.1 Unless posted on the HYC Race Information Board, the Windward/Leeward Line time limit is **120 minutes** and the Pursuit/Distance lines time limit is **210 minutes**.

16.2 Boats failing to finish within 30 minutes (the finishing window) after the first boat in its class sails the course and finishes will be scored Time Limit Expired (TLE) equal to the number of finishing boats plus 2. This changes RRS 35, A4, A5 and A11.

**17. PENALTIES**

17.1 Appendix V shall apply.

**18. PROTESTS AND REQUESTS FOR REDRESS**

18.1 Intent to protest shall be signaled in accordance with RRS 61.1. The protesting boat shall also notify the Race Committee at the first reasonable opportunity and be acknowledged before leaving the finish area. This changes RRS 61.1.

18.2 Protests shall be written on forms available at the office of the Houston Yacht Club and delivered there within sixty (60) minutes following the arrival in the harbor of the Race Committee boat for the racing line involved. This time will be posted on the "HYC Race Information" official notice board. This changes RRS Appendix S13.2.

18.3 The times and locations of the protest hearings, along with the names of the boats involved will be posted on the "HYC Race Information" official notice board at the entrance to the breezeway adjacent to the offices of The Houston Yacht Club no later than thirty (30) minutes after the protest time period.

18.4 For the purpose of meeting obligations under US Sailing prescriptions concerning redress, notification of a redress hearing shall be by posting on the official notice board for thirty (30) minutes. The requirement for written requests for attendance of the hearing will be satisfied by a signup sheet at the official protest table. No more than one person per boat may attend. No request for redress or for reopening a hearing

shall be accepted if delivered later than 30 minutes after (i) the results are posted on the notice board (in the case of redress) or (ii) the hearing results are posted on the notice board (in the case of a protest). This changes RRS Appendix 62.2 and RRS 66.

**19. SCORING**

19.1 The Low-Point Scoring system of Appendix A shall apply.

19.2 One race shall be completed to constitute a series.

19.3 No scores will be excluded. This changes RRS A2.

**20. SAFETY**

20.1 Any boat that has checked in, and then withdraws before finishing the race, shall notify the Race Committee on the water, or, if that is not possible, The Houston Yacht Club office by telephone: **281-471-1255**, or **VHF Channel 68 (if Windward Leeward Line) or VHF Channel 72 (if Pursuit Line)**. Failure to comply with this requirement may result in disqualification from this regatta.

20.2 Boats shall not discharge trash into the water. The penalty for violating RRS 55 will be a 20% Scoring Penalty. This changes RRS 55.

20.3 **DISCLAIMER OF LIABILITY:** Competitors participate in this regatta entirely at their own risk. See RRS 4, Decision to Race.

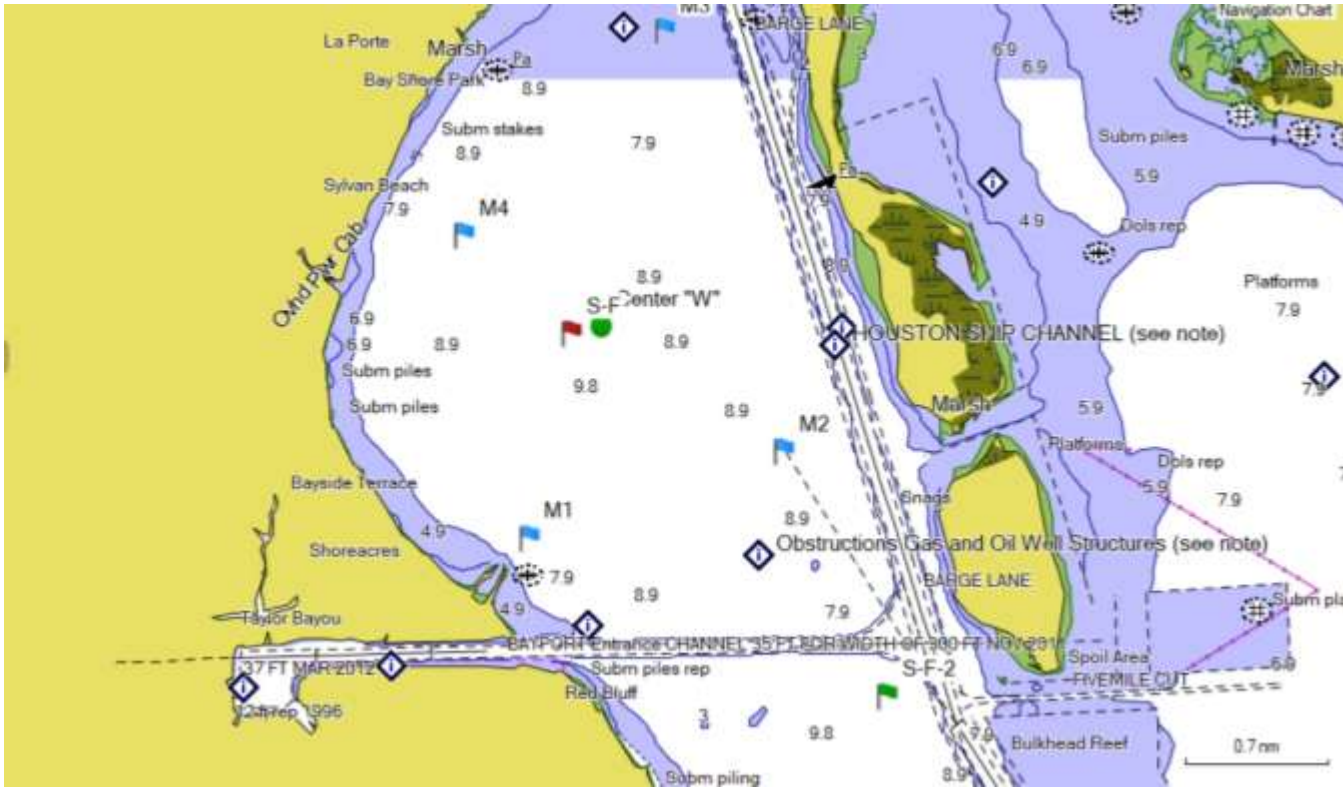
**21. RADIO COMMUNICATIONS**

21.1 Except in an emergency that threatens the safety or life and/or property, a boat that is racing shall not make voice or data transmissions and shall not receive voice or data communication that is not available to all boats.

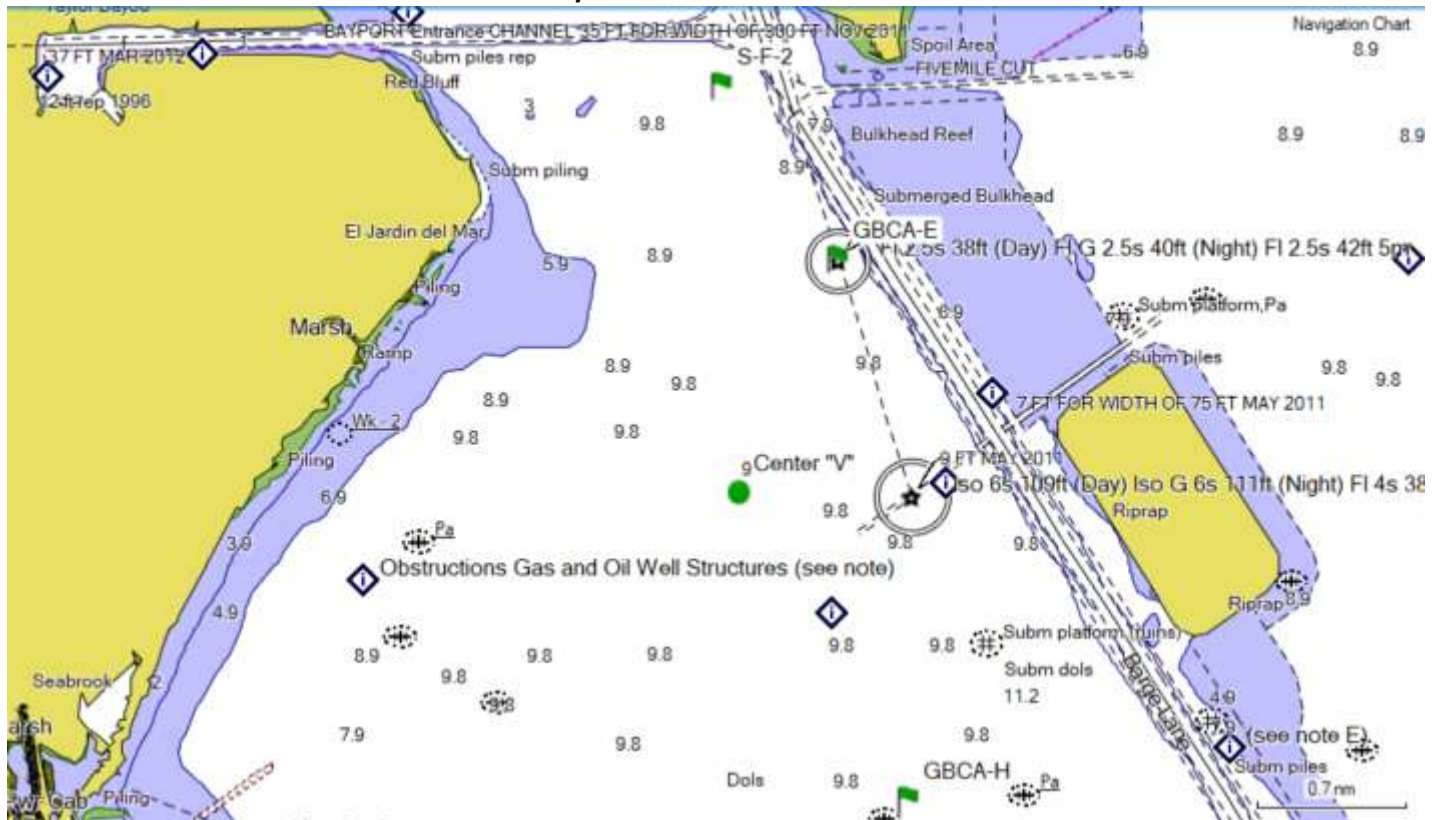
21.2 The Race Committee will attempt to monitor **VHF Channel 68 for the Windward/Leeward Line and VHF Channel 72 for Pursuit line**; and may use VHF radio to hail premature starters and the abandonment of races.

# ATTACHMENT A: RACING AREAS

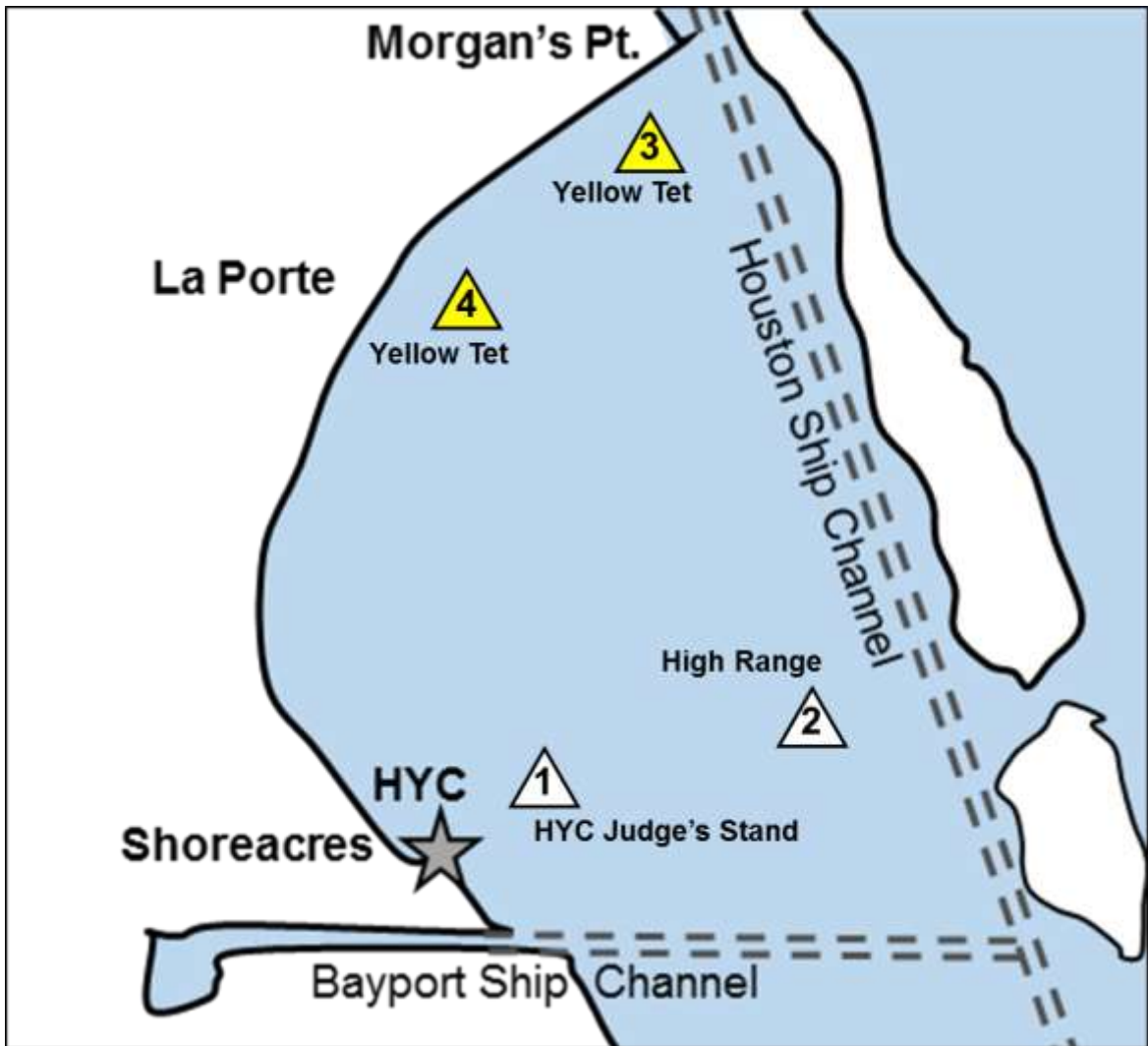
## PURSUIT LINES - NORTH COURSE



## WINDWARD/LEEWARD LINE - SOUTH COURSE



ATTACHMENT B  
PURSUIT COURSE MARK LAYOUT



## ATTACHMENT B

### PURSUIT LINE COURSES

#### Course #1

Mark 1 to Mark 4 Leave on Port  
Mark 4 to Mark 1 Leave on Port  
Mark 1 to Mark 2 Leave on Port  
Mark 2 to Mark 1 Leave on Starboard  
Mark 1 to Mark 4 Leave on Port  
Mark 4 to Mark 1 to finish for a total of **8.8 miles**

#### Course #2

Mark 1 to Mark 2 Leave on Port  
Mark 2 to Mark 1 Leave on Starboard  
Mark 1 to Mark 4 Leave on Starboard  
Mark 4 to Mark 3 Leave on Port  
Mark 3 to Mark 4 Leave on Port  
Mark 4 to Mark 1 to finish for a total of **8.6 miles**

#### Course #3

Mark 1 to Mark 2 Leave on Port  
Mark 2 to Mark 3 Leave on Port  
Mark 3 to Mark 1 Leave on Starboard  
Mark 1 to Mark 4 Leave on Port  
Mark 4 to Mark 1 Leave on Port  
Mark 1 to Mark 2 Leave on Port  
Mark 2 to Mark 1 to finish for a total of **11.8 miles**

#### Course #4

Mark 1 to Mark 2 Leave on Port  
Mark 2 to Mark 3 Leave on Port  
Mark 3 to Mark 2 Leave on Port  
Mark 2 to Mark 3 Leave on Port  
Mark 3 to Mark 4 Leave on Port  
Mark 4 to Mark 1 Leave on Port  
Mark 1 to Mark 4 Leave on Port  
Mark 4 to Mark 1 to finish for a total of **13.6 miles**

#### Course #5

Mark 1 to Mark 2 Leave on Port  
Mark 2 to Mark 3 Leave on Port  
Mark 3 to Mark 4 Leave on Port  
Mark 4 to Mark 1 to finish for a total of **6.4 miles**

#### Course #6

Mark 1 to Mark 3 Leave on Port  
Mark 3 to Mark 4 Leave on Port  
Mark 4 to Mark 2 Leave on Port  
Mark 2 to Mark 3 Leave on Port  
Mark 3 to Mark 1 to finish for a total of **10.5 miles**



# ATTACHMENT C - WINDWARD/LEEWARD LINE

