

Bob Barnes Memorial Regatta
Bayside Sailing Club Rowlett, TX, USA
June 15, 2019
Sailing Instructions

1. Rules

1.1. The regatta will be governed by the rules as defined in the *2017-2020 Racing Rules of Sailing*.

1.2. Class Rules of applicable national authorities will apply

2. Notices to Competitors

2.1. Notices to competitors will be posted on the official notice board whiteboard that is attached to the R Dock pavilion at least one hour before the first warning signal.

3. Changes to the Sailing Instructions

3.1 Any change to the sailing instructions will be posted before 8:30 AM on the day it will take effect, except that any change in the schedule of races will be posted by 7:00 PM on the day before it will take effect.

4. Signals Made Ashore

4.1. Signals made ashore will be displayed on the harbor flagpole.

4.2. When flag AP is displayed ashore, '1 hour' is replaced with 'not less than 30 minutes' in race signal AP.

5. Schedule of Races

<u>Day and Date</u>	<u>Warning Signal</u>	
Saturday, June 15 th	9:00 AM	Skippers Meeting
Saturday, June 15 th	10:00 AM	First race of day, additional races to follow
Saturday, June 15 th	4:00 PM	No Warning Signal after this time

6. Class Flags and Group Assignments

6.1. Class flag assignments (numeral pennants) and will be posted on the official notice board following the skippers' meeting.

7. Racing Area

7.1. Attachment 2 shows the approximate location of the racing area.

7.2. The Racing Area is on Lake Ray Hubbard, South of Interstate 30.

8. The Courses

- 8.1. Courses are illustrated in Attachment 1, including the order in which marks are to be rounded and all roundings are to port.
- 8.2. No later than the warning signal, the Race Committee signal boat will display the approximate compass bearing to the first mark.
- 8.3. The Offset Mark, if used, will be located approximately 200 ft. from Mark 1 at a right angle to the weather leg.

9. Mark Descriptions

- 9.1. All Course Marks will be dropped marks.
 - 9.1.1. The Start Mark will be a yellow tetrahedron.
 - 9.1.2. The Finish Mark will be an orange tetrahedron.
 - 9.1.3. The Offset Mark (if used) will be a red sphere.
- 9.2. New marks, as provided in instruction 12, will be an Orange Cylinder mark.

10. The Start

- 10.1. Races will be started by using rule 26 with the warning signal made five minutes before the starting signal. Combined fleet starts may be used and will be signaled with the starting fleets' class flags (numeral pennants). The Race Committee may sound several brief signals prior to the first warning signal in a starting sequence.
- 10.2. The starting line will be between a staff displaying an orange flag on the Race Committee signal boat and the Start Mark
- 10.3. If there is a significant wind shift during the start sequence, a *new* windward mark may be set for classes not yet started. This change will be signaled by displaying Flag C over each of the affected classes' class flags during their start sequence. The new mark 1 will be as described in SIs 9.2. When, in subsequent changes of course, a new mark is replaced, it will be replaced with an original mark.
- 10.4. Boats whose warning signal has not been made shall keep clear of the starting area during the starting sequence for other fleets.
- 10.5. The five minute rolling start sequence will be used.
- 10.6. A boat starting later than 4 minutes after her starting signal will be scored Did Not Start. This changes RRS A4 and A5.
- 10.7. The race committee may make a series on short beeps 15 seconds before the first warning signal.

11. Recalls

11.1. Individual recalls will be signaled in accordance with rule 29.1. In addition, the Race Committee will attempt to broadcast the name or number of each recalled boat on VHF radio (See 20). If rule 30.1 is in effect, boats which cross the starting line in the minute prior to the start may be notified before the starting signal. This changes RRS 41. The following shall not be grounds for redress:

- Failure of a boat to receive the recall broadcast
- A boat's position in the sequence of broadcast numbers

11.2. General recalls will be signaled in accordance with rule 29.2. If a subsequent start's class flag has been displayed, it shall be removed and voided.

12. Change of the Next Leg of the Course

12.1. To change the next leg of the course, the Race Committee will lay a new mark (or move the finish line) and remove the original mark as soon as practicable. If the Race Committee displays fleet numbers on the signal board, then the change of course applies only to those fleets whose numbers are signaled. When in a subsequent change a new mark is replaced, it will be replaced by an original mark.

13. The Finish

13.1. The finishing line for will be between a staff displaying an orange flag on a Race Committee boat and the Finish Mark.

13.2. All boats retiring from a race shall notify the Race Committee at its earliest convenience.

14. Time Limits

14.1. If no boat has passed Mark 1 within 1 hour of the start of the first class, the race will be abandoned.

14.2. Boats failing to finish within 30 minutes after the first boat in their class sails the course and finishes will be scored Did Not Finish without a hearing. This changes RRS 35 and A4 and A5.

15. Protests and Requests for Redress

- 15.1. Protest forms can be picked up at the registration table located in the Ship's Store. Protests and requests for redress or reopening shall be delivered there within the appropriate time limit.
- 15.2. For each fleet, the protest time limit is 60 minutes after their Race Committee signal boat docks after the last race of the day. The time of docking will be signaled by a sound and the time posted on the Official Notice Board.
- 15.3. Notices will be posted within 30 minutes of the protest time limit to inform competitors of hearings in which they are parties or named as witnesses.
- 15.4. Notices of protests by the Race Committee or Protest Committee will be posted to inform boats under rule 61.1(b).

16. Scoring

- 16.1. One race is required to be completed to constitute a regatta.
- 16.2. When fewer than three races have been completed, a boat's regatta score will be the total of her race scores.
- 16.3. When four or more races have been completed, a boat's regatta score will be the total of her race scores excluding her worst score.
- 16.4. The Low Point Scoring System (Rule A2) will apply

17. Safety Regulations

- 17.1. Check-In: Before the warning signal of her first race of each day, each boat shall sail on starboard tack past the stern of the Race Committee signal boat and hail her sail number until acknowledged by the Race Committee by repeating the boat's sail number.
- 17.2. A boat that retires from a race shall notify the Race Committee as soon as practical by radio or by notifying the harbor master to contact them.

18. Support Boats

- 18.1. Team leaders, coaches, and other support personnel shall stay outside areas where boats are racing from the time of the preparatory signal for the first class to start until all boats have finished or retired or the Race Committee signals a postponement, general recall or abandonment.

19. Trash Disposal

- 19.1. Boats shall not put trash in the water. Boats observed putting trash in the water may be asked to withdraw from the last race or the regatta.

20. Radio Communication

20.1. The Race Committee will use Channel 71. Except in an emergency, a boat shall neither make radio transmissions while racing nor receive radio communications not available to all boats. This restriction also applies to mobile telephones.

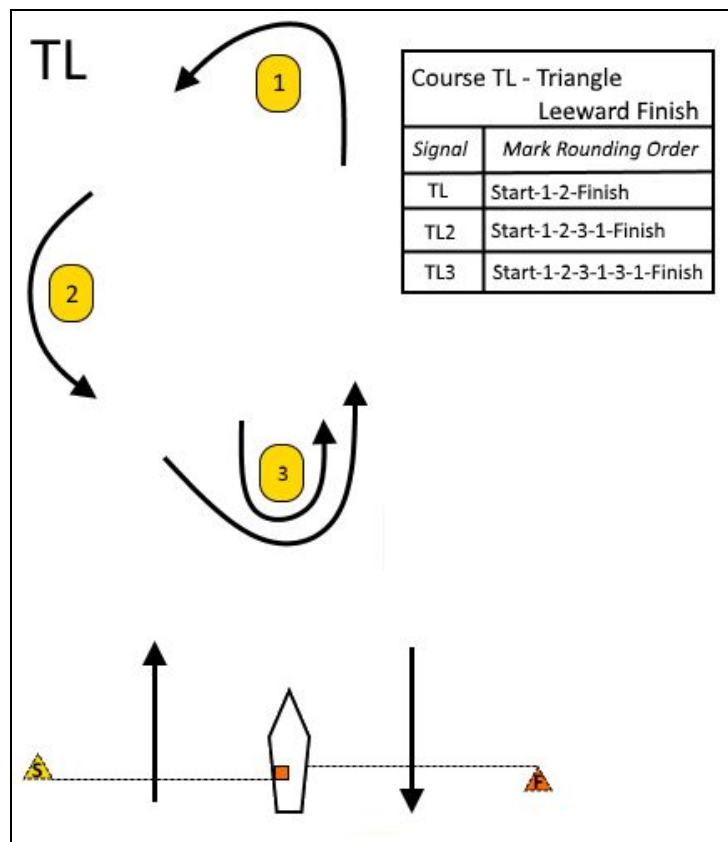
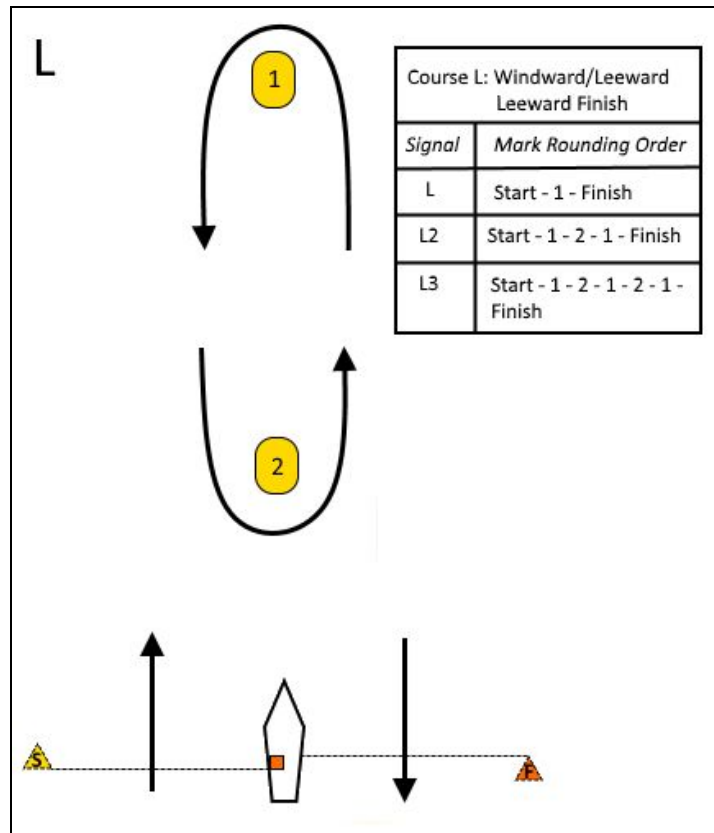
21. Prizes

21.1. Trophies will be awarded based on the number of boats in a fleet and as determined by the organizing authority.

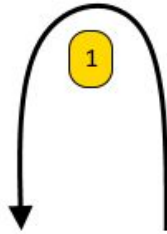
22. Disclaimer of Liability

22.1. Competitors participate in the regatta entirely at their own risk. See rule 4, Decision to Race. The organizing authority will not accept any liability for material damage or personal injury or death sustained in conjunction with or prior to, during, or after the regatta.

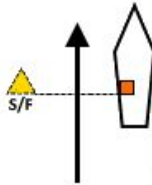
Appendix 1: Courses



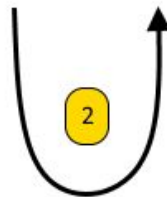
M



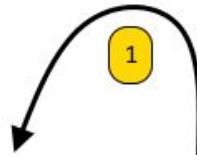
Course M: Windward/Leeward Midcourse Finish	
Signal	Mark Rounding Order
M	Start-1-2-Finish
M2	Start-1-2-1-2-Finish
M3	Start-1-2-1-2-1-2- Finish



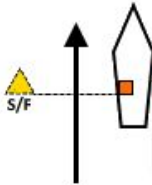
Poison Line:
Cross the Start/Finish Line
ONLY when Starting or Finishing.



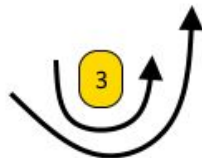
TM



Course TM: Triangle Mid-course Finish	
Signal	Mark Rounding Order
TM	Start-1-2-3-Finish
TM2	Start-1-2-3-1-3-Finish
TM3	Start-1-2-3-1-3-1-3- Finish



Poison Line:
Cross the Start/Finish Line
ONLY when Starting or Finishing.



Appendix 2, Racing Area:



Appendix 3, Event Area:



1. LAUNCH RAMP
2. MAST CRANE
 - a) Located at the end of R Dock
3. COURTESY SLIPS
 - a) Open slips on the west side of G Dock are available for use
4. RESTROOMS AND REGISTRATION
 - a) Registration is located inside the ship store
 - b) Restrooms are located behind the ship store
5. SKIPPER'S MEETING
6. POST-RACE PARTY
 - a) Located near the main marina parking lot
7. EMERGENCY RENDEZVOUS