

MARK ROSTER			
MARK	DESCRIPTION	LAT	LONG
A	R "10" QR	39°8.383'	76°19.357'
B	G "7" FI G 6s	39°6.589'	76°18.293'
C	R "4" QR	39°5.651'	76°17.894'
D	G "1UC" FI G 4s	39°4.815'	76°18.85'
E	RW "LP" Mo(A)	39°2.58'	76°20.761'
F	R "4" FI R 4s	39°2.261'	76°22.834'
G	R "10" FI R 2.5s	39°4.459'	76°23.571'
H	R "12" FI R 4s	39°5.179'	76°23.572'
J	R "16" FI R 6s	39°6.99'	76°23.57'
K	G "23" FI G 4s	39°9.333'	76°25.116'
L	G "1M" QG	39°12.05'	76°30.779'
M	Fixed Lt FI 2.5s 27ft 5M (Poole's Is Bar)	39°15.70 7'	76°16.681'
N	Fixed Lt FI 2.5s 22ft (Craighill Light)	39°11.317 '	76°23.664'
P	G "3" FI G 4s	39°9.136'	76°21.135'
R	Fixed Lt FI 6s 51ft 9M (Sandy Pont Light)	39°0.954'	76°23.075'
T	Fixed Lt FI 2.5s 52ft 5M (Baltimore Light)	39°3.55 1'	76°23.94'
W	G C "1"	39°5.573'	76°15.264'
X	R N "2"	39°4.025'	76°16.344'
Z	Fixed Lt FI 6s 35ft 7M	39°3.423'	76°17.019'
PP	G C "11"	39°14.394'	76°33.262'

DISTANCES BETWEEN MARKS (nm)																			
	B	C	D	E	F	G	H	J	K	L	M	N	P	R	T	W	X	Z	PP
A	1.97	2.96	3.59	5.90	6.69	5.11	4.58	3.55	4.57	9.58	7.61	4.45	1.57	7.97	6.00	4.24	4.95	5.28	12.34
B		0.99	1.83	4.44	5.5	8	4.62	4.33	4.11	5.96	11.12	9.20	6.30	3.37	6.75	5.33	2.56	2.98	3.32
C			1.12	3.79	5.12	4.56	4.4	3	4.60	6.70	11.87	10.10	7.22	4.30	6.18	5.14	2.04	2.02	2.33
D				2.68	4.01	3.68	3.68	4.26	6.64	11.75	11.02	7.50	4.67	5.07	4.15	2.88	2.10	1.99	14.72
E					1.64	2.88	3.39	4.92	7.55		13.50	9.02	6.56	2.42	2.65	5.21	3.72	3.03	15.28
F						2.27	2.97	4.76	7.2	9		14.27	9.08	7.00	1.32	1.55	6.75	5.34	4.66
G							0.72	2.53	5.02			12.45	6.86	5.04	3.53	0.95	6.54	5.63	5.19
H								1.81	4.32			11.81	6.14	4.39	4.24	1.65	6.46	5.73	5.38
J									2.63	7.54		10.22	4.33	2.86	6.05	3.45	6.60	6.34	6.21
K										5.16	9.13	2.28	3.09	8.53	5.85	8.52	8.63	8.63	8.09
L												5.56	8.02			13.66	13.78	13.72	3.03
M												6.97	7.42	15.56	13.40			12.29	12.91
N												2.93	10.37	7.77	8.69	9.24	9.43	8.05	
P													8.32	5.99	5.78	6.32	6.55	10.77	
R														2.68	7.62	6.06	5.31	15.59	
T															7.03	5.92	5.38	13.03	
W																1.76	2.55	16.51	
X																	0.80	16.72	
Z																		16.70	

MAGNETIC BEARING BETWEEN MARKS ENTER VERTICALLY																				
	A	B	C	D	E	F	G	H	J	K	L	M	N	P	R	T	W	X	Z	PP
A		346	349	5	22	35	51	57	78	113	124	207	142	130	32	47	323	343	351	130
B	166		353	25	37	50	74	82	107	129	131	199	150	150	45	66	305	341	354	135
C	169	173		53	47	60	86	95	118	134	134	197	153	155	52	77	283	335	354	137
D	185	205	233		45	62	96	107	132	144	139	200	161	169	51	83	266	303	326	142
E	202	217	227	225		90	142	151	165	165		205	177	189	59	123	246	258	265	152
F	215	230	240	242	270		177	180	184	177		211	187	202	19	157	252	262	267	157
G	231	254	266	276	322	357		191	192	177		217	190	213	5	29	271	286	293	154
H	237	262	275	287	331	0	11		192	175		218	190	217	6	21	278	293	300	152
J	258	287	298	312	345	4	12	12			164	143	223	190	233	7	16	294	309	146
K	293	309	314	324					344		133		221	285			307	319	324	140
L	304	311	314	319	332	339	335	332	323	313		263	289	302	343	339			320	152
M	27	19	17	20	25	31	37	38	43	57	83		62	39	30	36	5	10	12	95
N	322	330	333	341	357	7	10	10	10	41	109	242		329	9	13	323	333	338	124
P	310	330	335	349	9	22	33	37	52	105	122	219	149		22	32	319	335	342	130
R	212	225	232	232	239	199	185	186	187	180		210	189	202		177	244	251	253	161
T	228	246	257	263	303	337	209	201	196	182		216	193	212	357		264	277	283	157
W	143	125	103	86	66	72	91	98	114	127	129		143	139	64	84		40	44	133
X	163	161	155	123	78	82	106	113	129	139	137		153	155	71	97	220		52	139
Z	171	174	174	146	85	87	113	120	136	144	140	193	158	162	73	102	224	232		142
PP	310	315	318	322	332	338	334	332	326	320	332	275	304	310	341	338	314	320	322	

■ direct route not possible

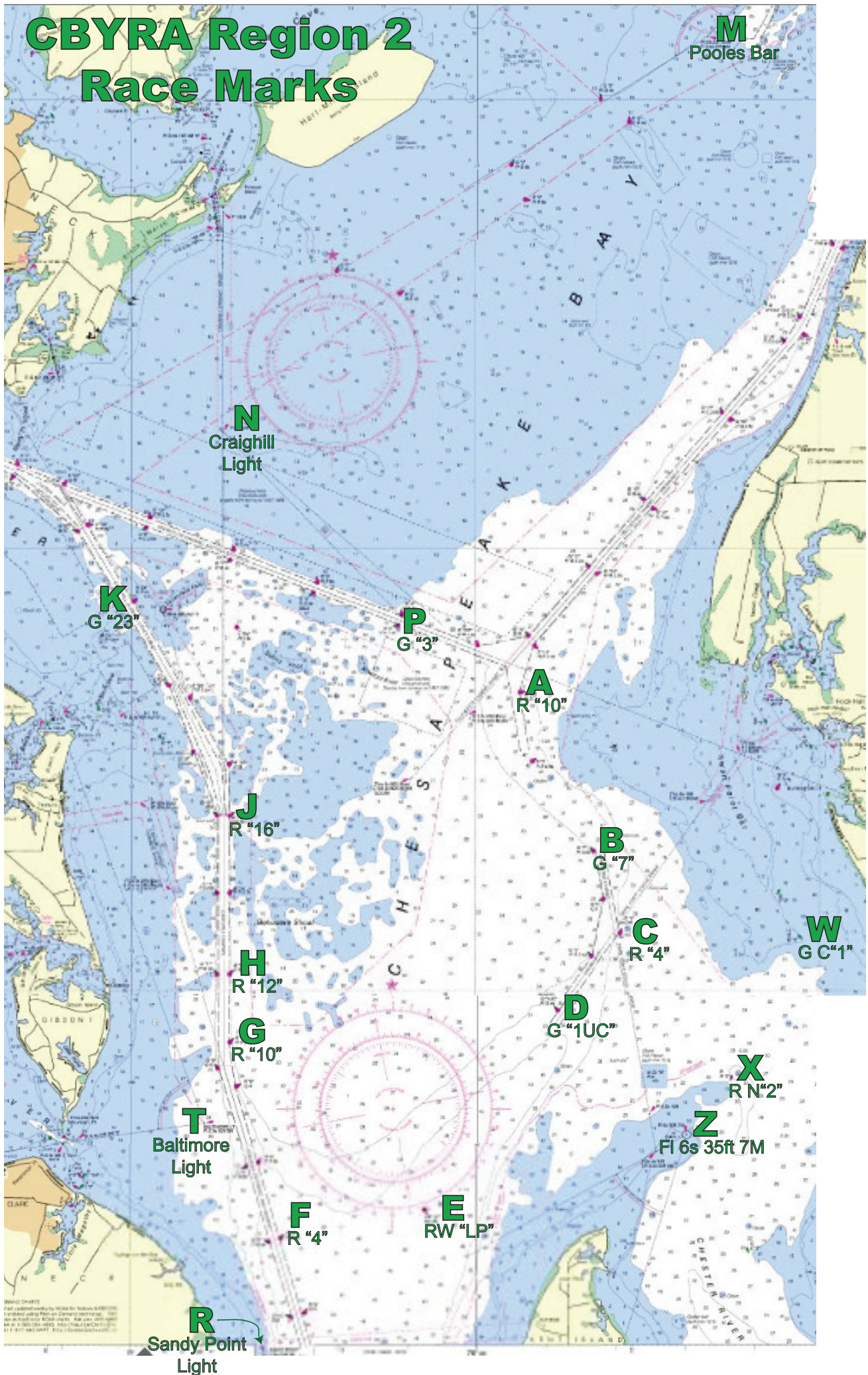
CBYRA Region 2 Racing Marks

Chesapeake Bay Marks

Last update: January 2015

Positions from USCG Light List Vol. II Atlantic Coast 2015 (COMDTPUB P16502.2)

CBYRA Region 2 Race Marks



M
Pooles Bar

N
Craighill
Light

K
G "23"

P
G "3"

A
R "10"

J
R "16"

B
G "7"

C
R "4"

W
GC "1"

H
R "12"

G
R "10"

D
G "1UC"

X
RN "2"

Z
FI 6s 35ft 7M

T
Baltimore
Light

F
R "4"

E
RW "LP"

R
Sandy Point
Light

MARK ROSTER			
MARK	DESCRIPTION	LAT	LONG
A	R "10" Q R	39°8.383'	76°19.357'
B	G "7" FI G 6s	39°6.589'	76°18.293'
C	R "4" Q R	39°5.651'	76°17.894'
D	G "1UC" FI G 4s	39°4.815'	76°18.85'
E	RW "LP" Mo(A)	39°2.58'	76°20.761'
F	R "4" FI R 4s	39°2.261'	76°22.834'
G	R "10" FI R 2.5s	39°4.459'	76°23.571'
H	R "12" FI R 4s	39°5.179'	76°23.572'
J	R "16" FI R 6s	39°6.99'	76°23.57'
K	G "23" FI G 4s	39°9.333'	76°25.116'
L	G "1M" Q G	39°12.05'	76°30.779'
M	Fixed Lt FI 2.5s 27ft 5M (Poole's Is Bar)	39°15.70 7'	76°16.681'
N	Fixed Lt FI 2.5s 22ft (Craighill Light)	39°11.317 '	76°23.664'
P	G "3" FI G 4s	39°9.136'	76°21.135'
R	Fixed Lt FI 6s 51ft 9M (Sandy Pont Light)	39°0.954 '	76°23.075'
T	Fixed Lt FI 2.5s 52ft 5M (Baltimore Light)	39°3.55 1'	76°23.94'
W	G C "1"	39°5.573'	76°15.264'
X	R N "2"	39°4.025'	76°16.344'
Z	Fixed Lt FI 6s 35ft 7M	39°3.423'	76°17.019'
PP	G C "11"	39°14.394'	76°33.262'

DISTANCES BETWEEN MARKS (nm)

	B	C	D	E	F	G	H	J	K	L	M	N	P	R	T	W	X	Z	PP	
A	1.97	2.96	3.59	5.90	6.69	5.11	4.58	3.55	4.57	9.58	7.61	4.45	1.57	7.97	6.00	4.24	4.95	5.28	12.34	A
B		0.99	1.83	4.44	5.58	4.62	4.33	4.11	5.96	11.12	9.20	6.30	3.37	6.75	5.33	2.56	2.98	3.32	13.98	B
C			1.12	3.79	5.12	4.56	4.43	4.60	6.70	11.87	10.10	7.22	4.30	6.18	5.14	2.04	2.02	2.33	14.78	C
D				2.68	4.01	3.68	3.68	4.26	6.64	11.75	11.02	7.50	4.67	5.07	4.15	2.88	2.10	1.99	14.72	D
E					1.64	2.88	3.39	4.92	7.55		13.50	9.02	6.56	2.42	2.65	5.21	3.72	3.03	15.28	E
F						2.27	2.97	4.76	7.29		14.27	9.08	7.00	1.32	1.55	6.75	5.34	4.66	14.58	F
G							0.72	2.53	5.02		12.45	6.86	5.04	3.53	0.95	6.54	5.63	5.19	12.46	G
H								1.81	4.32		11.81	6.14	4.39	4.24	1.65	6.46	5.73	5.38	11.89	H
J									2.63	7.54	10.22	4.33	2.86	6.05	3.45	6.60	6.34	6.21	10.55	J
K										5.16	9.13	2.28	3.09	8.53	5.85	8.52	8.63	8.63	8.09	K
L												5.56	8.02			13.66	13.78	13.72	3.03	L
M												6.97	7.42	15.56	13.40			12.29	12.91	M
N													2.93	10.37	7.77	8.69	9.24	9.43	8.05	N
P														8.32	5.99	5.78	6.32	6.55	10.77	P
R															2.68	7.62	6.06	5.31	15.59	R
T																7.03	5.92	5.38	13.03	T
W																	1.76	2.55	16.51	W
X																		0.80	16.72	X
Z																			16.70	Z
	B	C	D	E	F	G	H	J	K	L	M	N	P	R	T	W	X	Z	PP	

**MAGNETIC BEARING BETWEEN MARKS
ENTER VERTICALLY**

	A	B	C	D	E	F	G	H	J	K	L	M	N	P	R	T	W	X	Z	PP		
A		346	349	5	22	35	51	57	78	113	124	207	142	130	32	47	323	343	351	130	A	
B	166		353	25	37	50	74	82	107	129	131	199	150	150	45	66	305	341	354	135	B	
C	169	173		53	47	60	86	95	118	134	134	197	153	155	52	77	283	335	354	137	C	
D	185	205	233		45	62	96	107	132	144	139	200	161	169	51	83	266	303	326	142	D	
E	202	217	227	225		90	142	151	165	165		205	177	189	59	123	246	258	265	152	E	
F	215	230	240	242	270		177	180	184	177		211	187	202	19	157	252	262	267	157	F	
G	231	254	266	276	322	357		191	192	177		217	190	213	5	29	271	286	293	154	G	
H	237	262	275	287	331	0	11		192	175		218	190	217	6	21	278	293	300	152	H	
J	258	287	298	312	345	4	12	12		164		143	223	190	233	7	16	294	309	316	146	J
K	293	309	314	324					344		133		221	285			307	319	324	140	K	
L	304	311	314	319	332	339	335	332	323	313		263	289	302	343	339			320	152	L	
M	27	19	17	20	25	31	37	38	43	57	83		62	39	30	36	5	10	12	95	M	
N	322	330	333	341	357	7	10	10	10	41	109	242		329	9	13	323	333	338	124	N	
P	310	330	335	349	9	22	33	37	52	105	122	219	149		22	32	319	335	342	130	P	
R	212	225	232	232	239	199	185	186	187	180		210	189	202		177	244	251	253	161	R	
T	228	246	257	263	303	337	209	201	196	182		216	193	212	357		264	277	283	157	T	
W	143	125	103	86	66	72	91	98	114	127	129		143	139	64	84		40	44	133	W	
X	163	161	155	123	78	82	106	113	129	139	137		153	155	71	97	220		52	139	X	
Z	171	174	174	146	85	87	113	120	136	144	140	193	158	162	73	102	224	232		142	Z	
PP	310	315	318	322	332	338	334	332	326	320	332	275	304	310	341	338	314	320	322		PP	
	A	B	C	D	E	F	H	H	J	K	L	M	N	P	R	T	W	X	Z	PP		

■ direct route not possible