



Ventura Yacht Club
1755 Spinnaker Drive, Ventura CA 93001
1-805-642-0426, Fax 1-805-642-0494



Sailing Instructions

2019 Governor's Cup, June 15th

1. Rules

- 1.1. The race will be governed by the rules as defined in The Racing Rules of Sailing
- 1.2. This event is rated Nearshore Event. Entrants should comply with the US Sailing SER. The following prescriptions of the USS SER have been modified for this event.
 - 1.2.1. USS SER 2.4.4 is in effect and modified to require lifelines even if they are not uncoated Stainless Steel.
 - 1.2.2. USS SER 3.19.1 is modified to allow compasses such as the TACK TICK and Velocitek Shift (non GPS) magnetic compasses with mounted brackets as long as they are tethered so the device may not be lost overboard.
 - 1.2.3. USS SER Rule 3.8.2 is modified to allow a handheld waterproof VHF or a handheld VHF with a waterproof cover. DSC/GPS capability is not required.
 - 1.2.4. USS SER 3.3.1 is modified to allow running lights that are mounted below deck level (90's and earlier boats).
- 1.3. The responsibility for a boat's decision to participate in a race or to continue racing is hers alone. **RRS 4.**

2. Notice to Competitors and Changes to the SI

- 2.1. Notices will be posted on the Bulletin Board located inside the downstairs patio at VYC.
- 2.2. Oral instructions from the RC on station will be displayed using Code Flag L on the RC boat.

3. Signals made ashore

- 3.1. Signals will be hoisted on the VYC Main flag pole or to one of the side arms accompanied by an audible signal.

4. Schedule of Race(s)

- 4.1. The warning signal is scheduled for 1125, June 15th.

5. Ratings and Classes

- 5.1. Area A ratings will be used.
- 5.2. Classes will be determined at the Skippers meeting based on entries.
- 5.3. Class Flags, Class A: red, Class B: green, Class C: purple, Class D: pink

6. Race Area

- 6.1. The Start Line will be in the vicinity of the Mandalay buoy.
- 6.2. Racers are requested to check in as soon as the RC signals that they are on station by sailing past and hailing or by using VHF channel 69.

7. Courses

- 7.1. The course chart is attached to this document.
- 7.2. The RC shall signal the course for a class no later than the warning signal for that class.
- 7.3. Marks are described on the course chart.

8. Obstructions

- 8.1. The detached Breakwater is an obstruction per the RRS

9. The Start

- 9.1. The race shall be started using **RRS 26.**

- 9.2. The start will be between the orange Flag on the RC Boat and the Port/Pin end of the Start Line which may be the Mandalay buoy or an Inflatable buoy.
- 9.3. The start is scheduled for 1130.
- 9.4. As a courtesy, the RC will sound a series of horns 1 minute before the start sequence.
- 9.5. The RC will use VHF Channel 69.
- 9.6. **Recalls**
 - 9.6.1. The RC shall as a courtesy attempt to hail boats that are OCS.
 - 9.6.2. The RC is not responsible for hailing boats OCS.

10. Finish Line

- 10.1. The Finish line is a line between a stationary position on the Upper Deck of VYC and the Green Light standard on the South end of the detached Breakwater.
- 10.2. As you approach the finish, it is requested that you notify the RC on Channel 69 of your approach.
- 10.3. Shortly after finishing, it is requested that spinnakers be struck in order to maintain safe maneuverability and legal speed in the harbor.
- 10.4. If foggy, please radio the RC when your bow crosses the finish line.

11. Penalty System

- 11.1. The 2 turn Penalty **RRS 44.2** applies.

12. Time Limit

- 12.1. If any boat in a class finishes before sunset, the race is valid for that class. If no boat in a class finishes before sunset, the race is abandoned for that class, RRS 35, and will not be re-sailed. Sunset will be announced at the Skippers meeting.. The official time reference shall be GPS time

13. Protest and Requests for Redress

- 13.1. Protest shall be filed on a form available at VYC or online. Protests shall be heard as soon as practicable which may not be the same night that the protest was filed.
- 13.2. Protest shall be filed with the RC within 1 hour the protesting boats finish or entering the harbor.
- 13.3. These items are not grounds for granting redress.
 - 13.3.1. Failure of a boat to hear a recall hail or broadcast.
 - 13.3.2. A boat's position in the sequence of the recall hail or broadcast.
 - 13.3.3. Failure of the RC to hail or broadcast the recall boats' numbers.

14. Scoring

- 14.1. **RRS A4** Low Point Scoring will apply.

15. Safety Regulations

- 15.1. All Owners, Skippers or Charterers shall be responsible for following all US Coast Guard safety regulations and the Safety Equipment Requirements of the National Authority or Class Association unless otherwise modified in these Instructions.
- 15.2. A boat that retires prior to the finish of the days racing and does not intend to continue, shall radio the RC on VHF Channel 69 or call the VYC Office at 1-805-642-0426.
- 15.3. A minimum of 2 people on board is required to race.
- 15.4. Each participating boat will have 3rd party insurance. Documentation must be provided upon request.
- 15.5. The RC may require all participants to wear PFD's by flying the Code Flag Y, prior to the start.

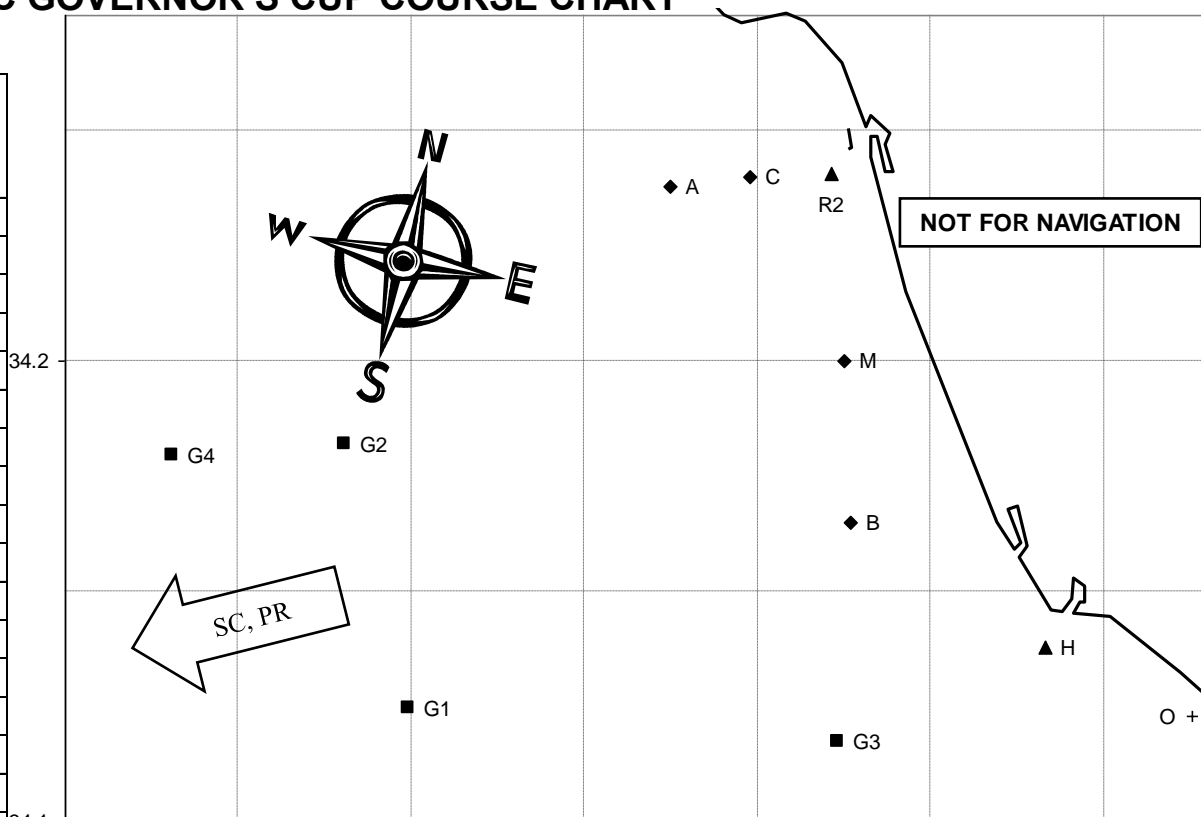
16. Post-Race and Trophies

- 16.1. Cheer and Trophies will be at the end of the days racing.

Questions? Contact PRO Pam Phillips at (805) 985-3005 or email phillips2280@roadrunner.com.

2019 VYC GOVERNOR'S CUP COURSE CHART

#	Course	Magnetic Heading To First Mark	Course Length
1	S Bs R2s Ms R2s F	164	12.0
2	S Bs G1s R2s F	164	18.8
3	S Bs Mp G2s F	164	20.1
4	S Bs G4s F	164	22.6
5	S G3s R2s F	167	12.8
6	S G3s Bs G3s R2s F	167	18.6
7	S G3s Cp Ap R2p Ap F	167	22.11
8	S G3s Ms G3s R2s F	167	22.7
9	S G3s G1s R2p Ap F	167	25.6
10	S G3s R2s G3s R2s F	167	27.7
11	S G1s R2s F	220	17.65
12	S G1s Cp Ap F	220	20.77
13	S G1s As Cs As F	220	21.60
14	S G1s R2p Ap F	220	22.73
15	S G1p G3p G1s R2s F	220	30.45
16	S G2s Cp Ap F	247	18.63
17	S G2s R2p Ap F	247	20.99
18	S G2s F	247	15.89
19	S G2s Mp R2s F	247	18.16
20	S G4s F	249	20.4
21	S G4s Cp Ap F	249	23.57
22	S G4s G2s G4s F	249	25.8
23	S Ap G4p F	298	22.0
24	S Ap Ms G2s F	298	22.7
25	S Ap Ms G4s F	298	27.2
26	S Ap G3s G4s F	298	32.2
27	S R2p G2p F	341	18.9
28	S SCp R2s F	225	34.9
29	S PRp R2s F	233	47.6



MARKS	APPROXIMATE LOCATION
A Fish Sticks spar buoy	L: 34° 14.5'N Lo: 119° 19.9'W
B "Wes" Mark	L: 34° 09.9'N Lo: 119° 16.4'W
C Chips spar buoy	L: 34° 14.4'N Lo: 119° 17.9'W
H Hue Whistle buoy RW"PH"	L: 34° 08.3'N Lo: 119° 13.0'W
M,S Mandalay spar buoy	L: 34° 12.0'N Lo: 119° 16.5'W
O Ormond buoy	L: 34° 7.4'N Lo: 119° 10.5'W
R2 Vta Whistle buoy R"2V"	L: 34° 14.4'N Lo: 119° 16.7'W
F Finish at Ventura Harbor; see Sailing Instructions	
G1 Platform Gail	L: 34° 07.5'N Lo: 119° 24.1'W
G2 Platform Gilda	L: 34° 10.9'N Lo: 119° 25.2'W
G3 Platform Gina	L: 34° 07.0'N Lo: 119° 16.6'W
G4 Platform Grace	L: 34° 10.8'N Lo: 119° 28.1'W
SC SCorpion Anch buoys (2)	L: 34° 02.98'N Lo: 119° 33.32'W
PR PRisoners Hbr buoy	L: 34° 01.25'N Lo: 119° 41.12'W