

**SAILING INSTRUCTIONS**  
**OYC RS TERRA REGATTA FOR ELIZABETH HOSPICE**  
 July 27, 2019  
**Oceanside Yacht Club**



## 1 RULES

- 1.1** The regatta will be governed by rules as defined in The Racing Rules of Sailing. The organizing authority is Oceanside Yacht Club.
- 1.2** No national prescriptions will apply.
- 1.3** Racing rules 26, 44.1 and A4/A5 are changed as described in section 10-The Start and section 13-Penalty System respectively.
- 1.4** These sailing instructions consist of the instructions in RRS Appendix S, Standard Sailing Instructions, and supplementary sailing instructions that will be on the official notice board located at Oceanside Yacht Club Office.

## 2 NOTICES TO COMPETITORS

Notices to competitors will be posted on the official notice board located at the OYC Office.

## 3 CHANGES TO SAILING INSTRUCTIONS

Any change to the sailing instructions will be posted before 0900 on the day it will take effect, except that any change to the schedule of races will be posted by 2000 on the day before it will take effect.

## 4 SCHEDULE OF RACES

- 4.1** Date of racing: Saturday July 27, 2019.
- 4.2** Number of races: Five races are scheduled.
- 4.3** The scheduled time of the warning signal for the first race is 11:57.

- 5 CLASS FLAGS** A single solid color class flag will be used. If the race committee determines that there will be multiple fleets with separate starts, it will announce the class flag colors at the skipper's meeting and on the water prior to the warning signal.

## 6 RACING AREAS

An attachment illustrates the racing area, which is defined by the north-, south- and outer-harbors of Oceanside Harbor.

## 7 COURSES

- 7.1** The attached course chart shows courses, the order in which marks are to be passed, and the side on which each mark is to be left.
- 7.2** No later than the warning signal, the race committee will display the course number and number of laps.

## 8 MARKS

- 8.1** Marks are navigation buoys and may also include small-moveable-orange-inflatable buoys identified on the course chart as X or Y.
- 8.2** Starting and finishing marks will be small-moveable-orange-inflatable buoys.

## 9 AREAS THAT ARE OBSTRUCTIONS

The following area, which is illustrated on the course chart, is designated as an obstruction and excluded from the racing area: submerged jetty identified by white markers, which is locally known as the rock garden.

## 10 THE START

**10.1** Races will be started as follows:

<i>Minutes before starting signal</i>	<i>Visual flag</i>	<i>Sound signal</i>	<i>Means</i>
3	Class flag	One	Warning signal
2	Prep flag	One	Preparatory signal
1	Prep flag removed	One long	One minute
0	Class flag removed	One	Starting signal

This changes RRS 26.

- 10.2** The starting line will be between a staff displaying an orange flag located at the end of I-dock and a small-moveable-orange-inflatable buoy.
- 10.3** Boats whose warning signal has not been made shall avoid the starting area during the starting sequence for other races.
- 10.4** A boat that does not start within 15 minutes after her starting signal will be scored Did Not Start without a hearing. This changes RRS A4 and A5.

## **11 CHANGE OF THE NEXT LEG OF THE COURSE**

To change the next leg of the course, the race committee will move the original mark (or the finishing line) to a new position. The race committee may shorten a course by reducing the number of posted laps to a lesser number.

## **12 THE FINISH**

The finishing line will be between a staff displaying an orange flag on the finishing marks and a small-moveable-orange-inflatable buoy.

## **13 PENALTY SYSTEM**

For all classes RRS 44.1 is changed so that the Two-Turns Penalty is replaced by a One-Turn Penalty.

## **14 PRIZES**

Prizes will be given as follows:

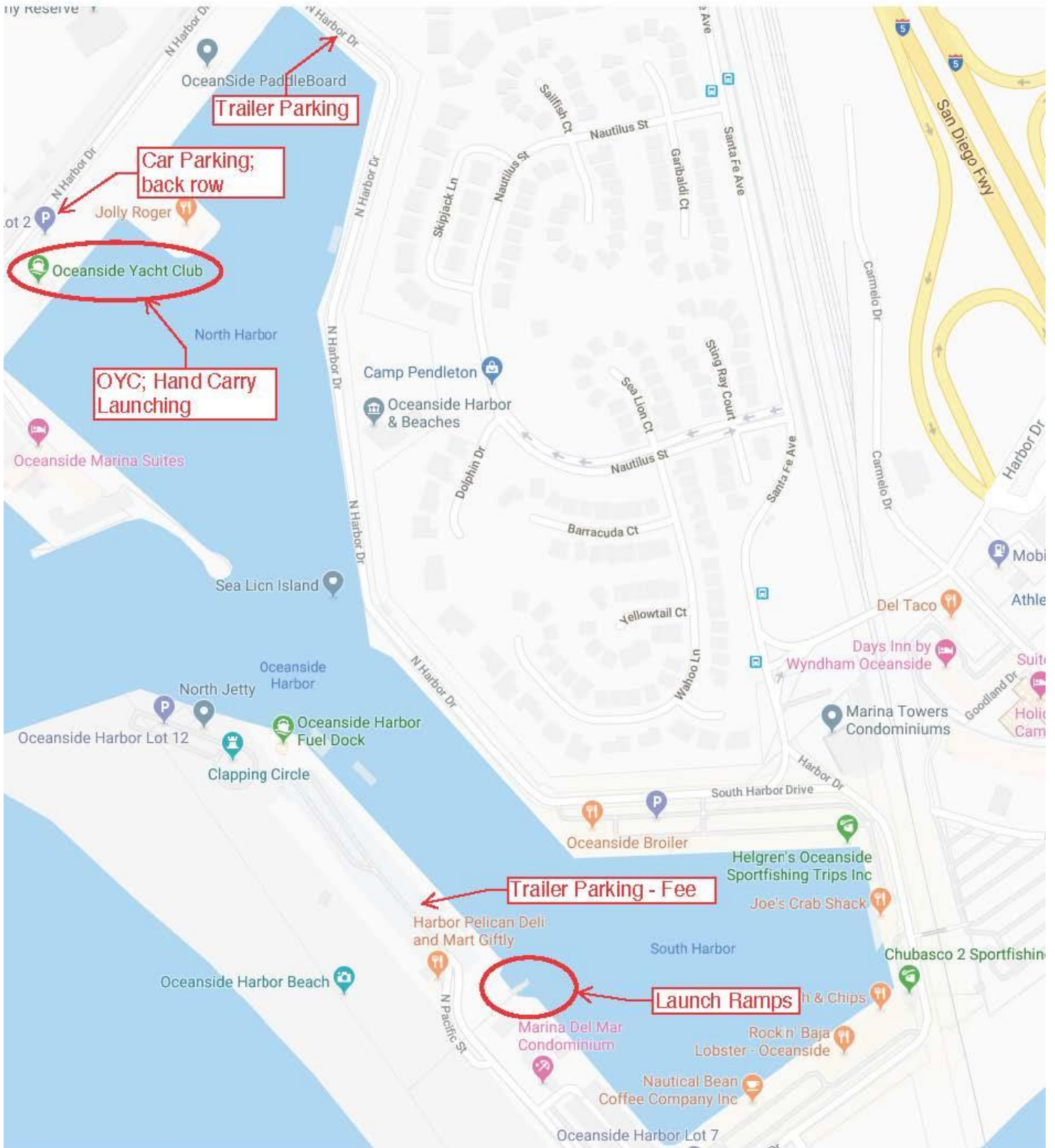
At least three trophies will be awarded. Four trophies will be awarded if more than eight boats participate.

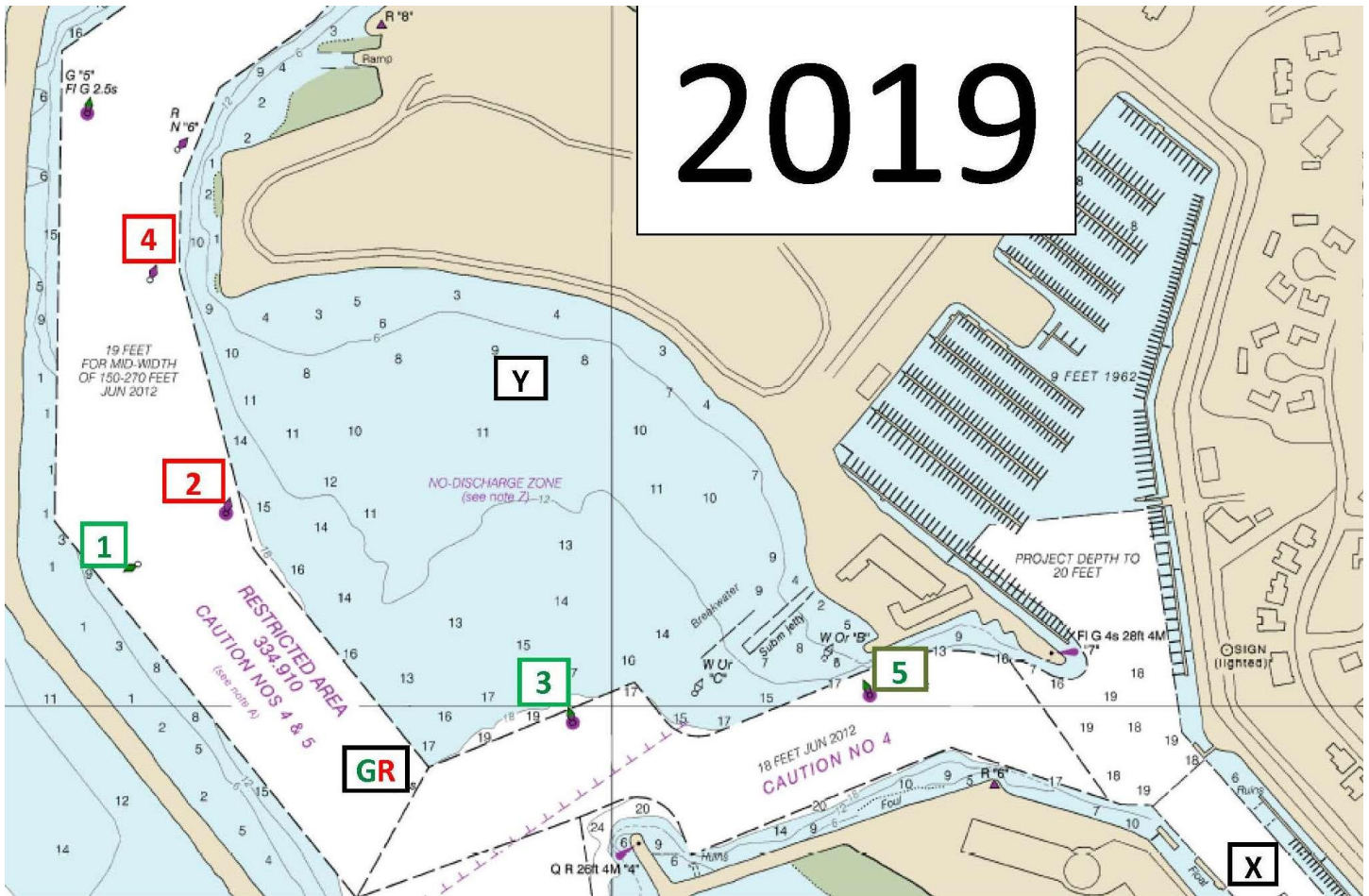
## **15 DISCLAIMER OF LIABILITY**

Competitors participate in the regatta entirely at their own risk. See RRS 4, Decision to Race. The organizing authority will not accept any liability for material damage or personal injury or death sustained in conjunction with or prior to, during, or after the regatta.

## **ATTACHMENTS**

Oceanside Harbor Vicinity; Launching; Parking  
Course Chart





2019

1) 1	8) 3, 4	15) 5	22) GRs, Y, GR
2) 2	9) 3s, 4, 3	16) 5, X	23) X
3) 2, 3	10) 3s, Y, 3	17) GR	24) Xs, 5s
4) 2, 3, Y	11) 4	18) GRs, 2s, 3	25) Y
5) 2, GR	12) 4, 3	19) GRs, 2, GR	26) Y, 2
6) 3	13) 4, GR	20) GRs, 4, 3	27) Y, 3
7) 3s, 2, 3	14) 4, GR, Y	21) GRs, Y, 3	28) Y, GR

**OYC NORTH-, SOUTH- & OUTER-HARBOR COURSES**

**II = 2 laps      X, Y = mobile marks      S = starboard**