

**Chester River Yacht & Country Club and
Corsica River Yacht Club
Annual Log Canoe Regatta
JULY 13-14, 2019
SAILING INSTRUCTIONS**

1. ENTRIES: Register via Regatta Network, or at the Committee Boat. An entry fee of \$40 is requested for this regatta.

2. RULES

2.1. The regatta will be governed by the rules as defined in *The Racing Rules of Sailing*, as modified by the Class Racing Rules of the Chesapeake Bay Log Canoe Association, except as any of these are changed by these sailing instructions or by the PRO.

3. NOTICES TO COMPETITORS: Notices to competitors will be posted on Regatta Network

4. CHANGES TO SAILING INSTRUCTIONS: Notices and changes will be made at the skippers meeting and to all yachts or their support boats verbally from the Committee Boat and, whenever possible, posted to the official regatta notice board.

5. COMMITTEE BOAT: **The Committee Boat will communicate via VHF channel 71.**

6. SIGNALS MADE ASHORE: All signals will be made from the Committee Boat; none will be made ashore.

7. SCHEDULE OF RACES:

<u>Race</u>	<u>Date</u>	<u>Warning Signal</u>	<u>Start</u>
1	Saturday	1000	1010
2	Saturday	1400	1410
3	Sunday	1000	1010

8. THE COURSE: The course will be displayed at the Committee Boat prior to the warning signal and throughout the starting sequence. It will consist of a sequence of letters, each indicating the next mark to round. The letters will be displayed in red to round the mark to port, and in green to round to starboard.

9. THE MARKS: The turning marks will be a combination of government buoys and/or 5 ft. yellow racing marks, as identified in the attached Chester River Regatta Course Sheet.

10. THE START: The race will be started with signals made at 5-minute intervals. This changes RRS Rule 26. Signals will be made as follows:

<u>Signal</u>	<u>Time to Start</u>	<u>Shape</u>
Warning	10 minutes	White
Preparatory	5 minutes	Blue
Start	0 minutes	Red

10.1. A sound may accompany each flag signal; however, times shall be taken from the visual signals. Failure of a sound signal shall be disregarded.

10.2. The starting line will be between an orange or yellow flag on the Committee Boat and a nearby orange buoy.

10.3. A "Safety Buoy" may be positioned to leeward of the Committee Boat and considered an EXTENSION OF THE COMMITTEE BOAT. Passing between it and the Committee Boat or hitting it will be considered to have hit the Committee Boat.

10.4. No race will be started in less than 3 knots of wind. The decision to start a race shall be made by each skipper, based on his or her own judgment. Competitors participate in the regatta entirely at their own risk.

11. RECALLS: Recalls will be signaled in accordance with RRS Rule 29.

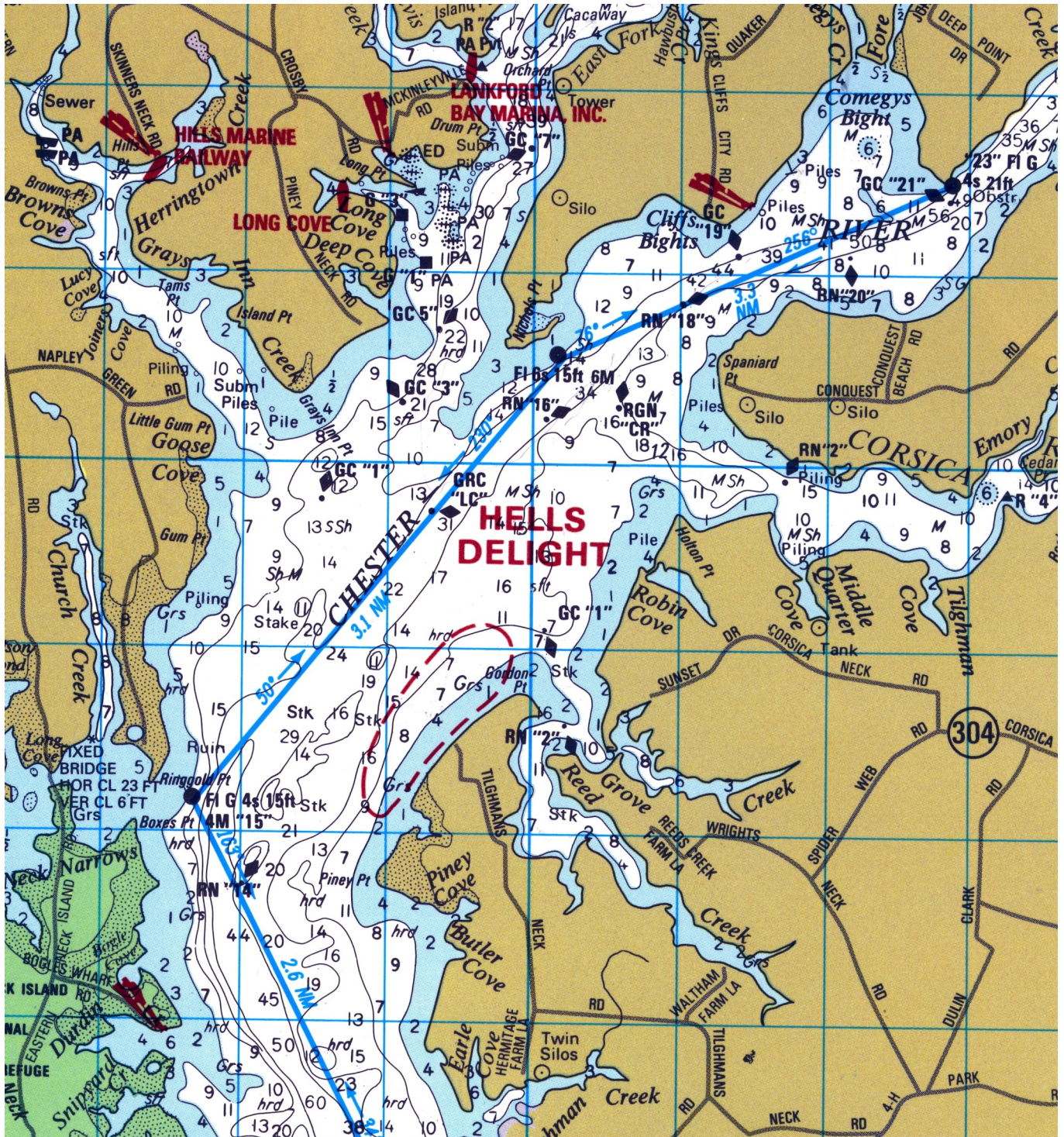
11.1. In the case of individual recall, the Committee will attempt to hail the sail number(s) of the yachts on course side. However, regardless of whether this hail is heard, responsibility for starting properly rests with each yacht.

12. CHANGE OF COURSE AFTER THE START: A change of course will be signaled near the mark beginning the leg being changed by a Race Committee mark boat that will display

Code Flag "C," a sheet displaying the new mark letter(s), and the approximate compass bearing to the new next mark.

13. THE FINISH: The finishing line will be the same as the starting line, unless the course is shortened, in which case it will be between a turning mark of the course and a flag on the Committee Boat or a Race Committee mark boat. The Finish line will be open.
14. PENALTIES: As specified in the CBLSCA Class Racing Rules, a yacht may take a One-Turn (360 degree) penalty when she may have broken a rule of RRS Part 2 while racing. This changes RRS Rule 44.1.
 - 14.1. If a competitor makes contact with the Committee Boat and as a result of such contact, damage occurs to the Committee Boat and/or injury is sustained by any of the Race Committee, the offending yacht shall retire immediately from that race. No penalty will be allowed. This modifies RRS Rule 44.
15. TIME LIMIT: The time limit will be 2.5 hours. Yachts failing to finish within 1 hour after the first yacht finishes, or after the time limit, whichever is later, will be scored DNF.
16. PROTESTS: The Race Committee must be informed of intent to protest as the yacht finishes the race involved. Protests shall be written and lodged with the Race Committee within one hour after the last yacht's finish in the last race of the day, using a copy of the Protest Form found in the back of the RRS.
 - 16.1. Time and location of the protest hearing will be posted on the regatta notice board at the CRYC pavilion.
 - 16.2. A protesting yacht must fulfill the requirements of RRS Rule 61.1, with the additional requirement that the protesting yacht shall make all reasonable efforts to inform the protestee upon filing a protest with the Race Committee, so that the protestee is aware of the need to appear at the protest hearing.
17. SAFETY: All canoes shall have a chase boat/tender with life jackets for all the crew. All canoes must have a life ring or throwable cushion with a rope. Any crewmember who cannot swim must wear a life jacket. It is the sole responsibility of the owner and/or skipper that these requirements are met.
18. SCORING: The scoring system shall be the Low Point System as describing in RRS Appendix A.
 - 18.1. Completion of 1 race will constitute a series.
 - 18.2. The CBLSCA Handicap System will determine corrected order of finish.
19. PRIZES: The Awards ceremony will be held at the conclusion of racing on Sunday at Corsica River Yacht Club at Ship Point on the Corsica River.
 1. **The Janet J. and Robert M. Hewes Trophy** -- First Place in the series based on corrected time
 2. **The Silver Heel Trophy** -- First place in the series based on uncorrected time
 3. **The Peter Esslinger Trophy** – First Place in the first Saturday race on corrected time
 4. **The Stratdorth Trophy** First Place in the first Sunday race on corrected time

Chester River Regatta Course Sheet 2019



MARKS:

- A - 4 ft. windward club inflated mark
- B - 4 ft. club inflated mark
- M - RN"18" south of Cliff's Point
- D - RGN"CR" west of Spaniard Point
- S - RN"16" west of Corsica River mouth
- P - GC"5" Mouth of Langford Creek
- LC - GR "LC" mid channel Langford Creek/Chester R.
- C - RN"2" Mouth of Corsica River
- R - GC"1" Mouth of Reeds Creek
- E - RN"14" South of Ringgold Point
- G - GC"1" Mouth of Gray's Inn Creek

NOTES:

- When displayed at the Committee Boat, 2X = twice around designated course.
- Start/Finish line is OPEN for intermediate legs of course.