



SAILING INSTRUCTIONS

2019 Forefathers Races in Honor of Bob Cooke & Neil Underwood Saturday, August 10, 2019

**Channel Islands Yacht Club (CIYC)
4100 Harbor Blvd, Oxnard, CA 93035**

- 1. RULES:** This race will be governed by the *rules* as defined in the *Racing Rules of Sailing*, these Sailing Instructions (SIs), SoCal PHRF rules, and applicable class association rules. The PHRF Marine Industry Racer (MIR) Rule is not in effect. This modifies PHRF Class Rule 8.

Area A Random Leg Course (RLC) ratings will be used. The Race Committee (RC) may assign a temporary rating for this race for boats without a current PHRF rating. Any changes to these SIs will be posted at CIYC by 9:00 AM or communicated on the water to each boat before her starting signal.

- 2. SCHEDULE:** Online race entry (<http://www.regattanetwork.com/event/19439>) is required. The entry fee is \$35; USSA members receive a \$5 discount. Online payment of entry fees is optional, but it helps to simplify the bookkeeping and streamlines the Skippers Meeting.

A mandatory Skippers Meeting is scheduled for Saturday, August 10, 2019, 8:30AM at CIYC. The first warning signal is planned for 10:55 AM for the first start at 11:00AM.

3. FLEETS & CLASSES

- The Bob Cooke Memorial fleet will include double-handed entries, ie, one skipper and one crew only on each boat. The Neil Underwood Memorial fleet will include boats with 3 or more individuals aboard.
- Spinnaker class in either race is open to all boats with current PHRF ratings. The Race Committee (RC) may assign a temporary rating for this race for non-spinnaker boats without a current PHRF rating. Class breaks will be announced at the Skippers Meeting.
- Class Flags will be signaled via numeral pennants:
 - 1 Bob Cooke Fleet - Spinnaker
 - 2 Bob Cooke Fleet - Non Spinnaker
 - 3 Neil Underwood Fleet – Spinnaker
 - 4 Neil Underwood Fleet - NonSpinnaker

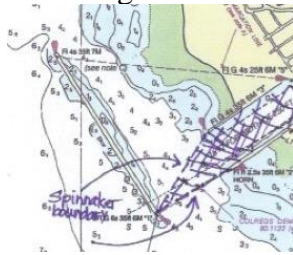
4. THE START

- The race will be started using Rule 26. The order of fleet and class starts and time gap between classes (if any) will be announced at the Skippers Meeting.
- Prior to her start, each boat shall check in with the RC by radio (VHF Channel 68)

- or by hailing the RC boat
- c. The port end of the starting line will be the Mandalay spar buoy and the starboard end will be designated by an orange flag on the RC boat
- d. Boats whose warning signal has not been made shall avoid the starting area during the starting sequence for other classes

5. THE FINISH

- a. When the first boat to finish is approximately 30 minutes from the Channel Islands Harbor entrance, the RC requests to be notified (VHF Channel 68 or by phone to CIYC, 805.985.2492, or the PRO, 805.822.7544) to assure that the RC is present when boats finish
- b. Spinnakers must be doused prior to entering the harbor, ie, before reaching the triangle formed by southern entrance channel markers: the detached breakwater (Green #1) and the attached jetties (Red #2 and Green #3). Any boat entering this triangle with the head of the spinnaker above the level of the boom gooseneck will be scored DSQ by the RC. This changes Rules 63.1 and A5.



- c. The finish line is defined by the CIYC flagpole (N 34°09.8' W 119°13.5') at the port end and a bearing line extending of 052°M to a lone palm tree (near the launch ramp on the opposite side of the harbor) at the starboard end. The RC will acknowledge each boat's finish with a horn blast.
 - d. A boat that starts but subsequently retires without finishing shall notify the RC at her earliest opportunity (VHF Channel 68 or CIYC at 805.985.2492).
- 6. THE COURSES:** The racing area will be the coastal waters of Ventura County near the Channel Islands and Ventura Harbors
- a. The courses will be chosen from the CIYC Course Chart, which includes course distances between 4.2 and 22.3 nm and will be available at the Skippers Meeting
 - c. The RC will signal the course number for the first starting class no later than the class warning signal. For succeeding classes the RC will signal the course number as soon as possible after the warning signal for that class. This changes Rule 27.1.
 - d. When an oil platform is a mark of the course, its associated mooring buoy(s) are also marks of the course
- 7. PROTESTS:** Protests shall be delivered to the RC within 2 hours of the finish of the protesting boat, or within 2 hours of her return to her harbor if she retires early. Protest forms are available online at US Sailing or at CIYC.
- 8. SAFETY EQUIPMENT:** Each skipper is responsible for compliance with applicable US Sailing Safety Equipment Requirements for Nearshore. The RC reserves the right to disqualify nonconforming boats. All boats shall carry a VHF radio with Channels 16 and 68. The RC will monitor VHF Channel 68 throughout the race.
- 9. PRIZES:** Individual prizes for each fleet will be awarded at Channel Islands Yacht Club after racing. The Bob Cooke and Neil Underwood Memorial Perpetual Trophies will be engraved with their respective winning boat and skipper names and shall be displayed at Channel Islands Yacht Club.

CIYC Course Chart

Channel Islands Yacht Club Course Chart			
#	Length	The Course	Approx. Course to 1st Mark
1	4.2	S Bp Fc	170° M
2	7.1	S Bp Hp Fc	170° M
3	11.5	S Hs G3s Fc	130° M
4	8.4	S G3p Fc	170° M
5	10.0	S G3s Bs Fc	170° M
6	9.9	S G3p Hp Fc	170° M
7	13.1	S G3p Ms Fc	170° M
8	20.4	S G3s G1s Fc	170° M
9	16.6	S G1p Fc	220° M
10	17.6	S G1p G3p Fc	220° M
11	22.3	S G1p G3p Ms Fc	220° M
12	17.2	S G2p Fc	250° M
13	19.1	S G2p G3p Fc	250° M
14	9.8	S Ap Fc	300° M

MARKS

APPROXIMATE LOCATION

A	Fish Sticks spar buoy	L: 34° 14.4'N; Lo: 119° 19.9'W
B	"WES" spar buoy	L: 34° 09.9'N; Lo: 119° 16.4'W
Fc	Channel Islands Harbor finish, see sailing instructions	
H	Hueneme buoy, R "2"	L: 34° 08.0'N; Lo: 119° 13.0'W
G1	Platform Gail	L: 34° 07.5'N, Lo: 119° 24.0'W
G2	Platform Gilda	L: 34° 10.9'N, Lo: 119° 25.1'W
G3	Platform Gina	L: 34° 07.0'N, Lo: 119° 16.6'W
G4	Platform Grace	L: 34° 10.8'N, Lo: 119° 28.1'W
M	Mandalay spar buoy	L: 34° 12.0'N; Lo: 119° 16.5'W
R2	Whistle buoy R "2" at Ventura Harbor	L: 34° 14.4'N; Lo: 119° 16.7'W
S	Start in vicinity of Mark M	

