

**SAILING INSTRUCTIONS
LANAI RACE / RENDEZVOUS
August 17, 2019**



Organizing Authority is the *Maui Boat & Yacht Club*.

1 RULES

The Race will be conducted according to The Racing Rules of Sailing 2017-2020 Including US Sailing Prescriptions (the *rules*) with HYRA prescriptions unless otherwise amended in these Sailing Instructions.

2 CHANGES IN SAILING INSTRUCTIONS

Any change in the Sailing Instructions will be discussed/distributed at the mandatory competitors meeting.

3 NOTICE TO COMPETITORS

Any notices to competitors will be distributed at the skippers meeting

4 SCHEDULE and START SEQUENCE

Skippers Meeting at 0830 hours August 17, 2019 at Lahaina Harbor by near Lele's slip. The first warning will be at approximately 0955 hours. Make certain there is a crew member available to man VHF channel 71 and a GPS-synchronized time source.

The start will proceed as follows: With all yachts sailing to windward on the same tack; this race will be started via notice and verbal countdown over **VHF 71** by the skipper/yacht selected at the competitors meeting. No flags or horns.

The same designated skipper/yacht will record the official GPS coordinates and start time of the race.

5 RACING AREA

Honokowai Stream GPS **Starting "Mark B"** to waypoint **Finish Mark "LX"** offshore from the end of the last sand beach on Lanai.. **Actual start area may be moved further North depending on the wind-line.** Aerial photos attached.

After completion of the race, we will cruise around the back side of Lanai to Manele Harbor, tie up in assigned slips, have a swim in Hulopo'e Bay, and celebrate the day's adventures with a BBQ.

6 FINISH

The finish is a waypoint located at the following coordinates:

Degrees, Minutes (decimal)

20° 55.68' N

157° 02.72' W

The method to determine the finish line is:

- Keeping the waypoint CLOSE to STARBOARD, each finishing yacht shall record their GPS time of day..
- Each yacht shall report it's finish time to Bruce Olsten via text message 264-1299 ASAP.

7 RADIO COMMUNICATION

Race committee and all competitors shall monitor **VHF Channel 71**

8 SCORING

Scoring of the event shall be in accord with the PHRF Handicap system. The Low Point System will be used to score a yacht's regatta position. This race will count as one race for season's points if 3 or more PHRF-A yachts rank as starters.

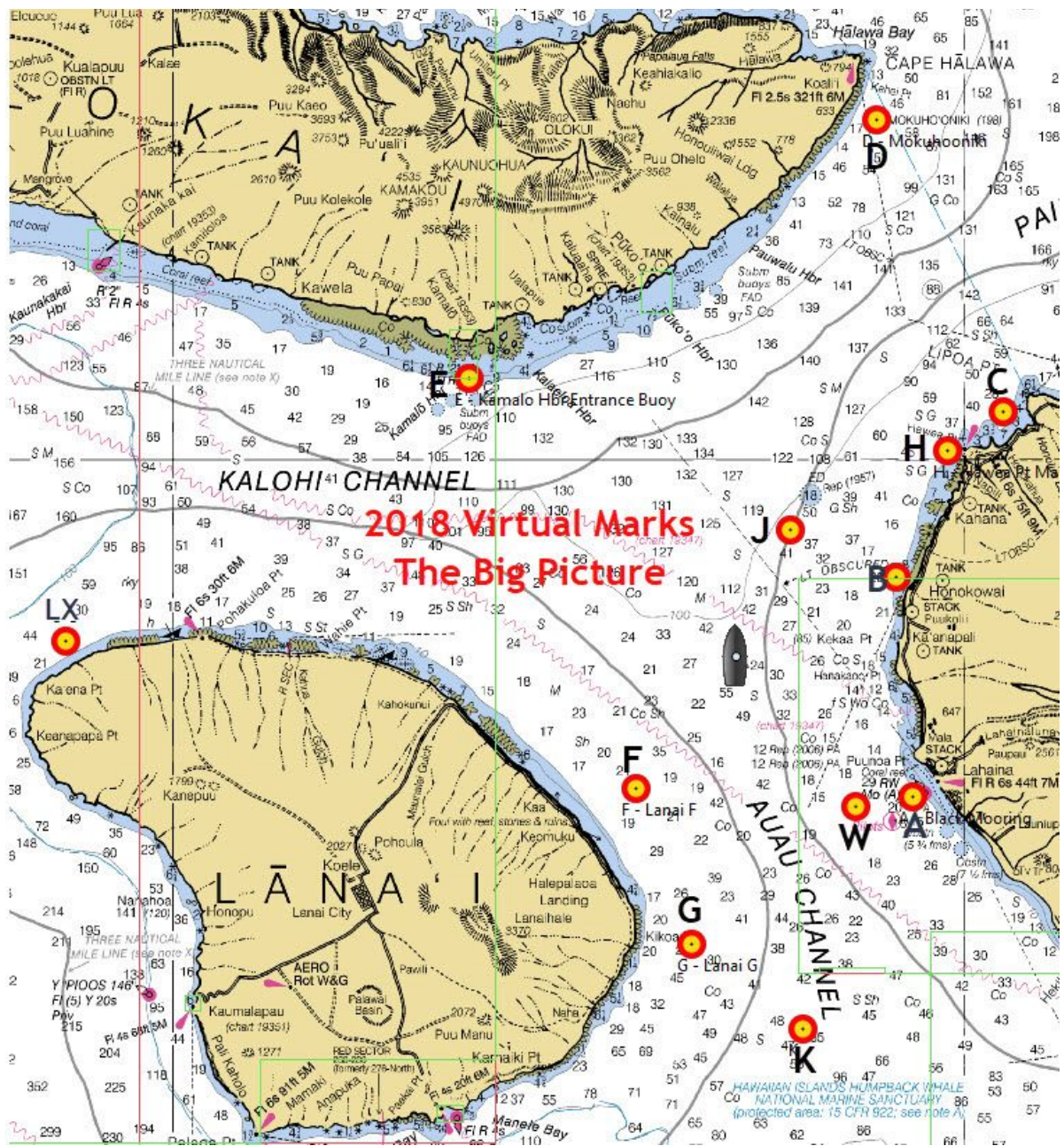
9 WITHDRAWING

A yacht leaving the race course shall notify the Race Committee by hail, VHF radio channel 71, cell phone, or by telephone message to Rear Commodore of Sail Lanny Daise at [816-273-7660](tel:816-273-7660) (or Bruce Olsten 808-264-1299), and by VHF radio (channel 71) to at least one other vessel participating in the race. Contact with another vessel to notify withdrawal from the race must be verified. Any yacht failing to do so may be subject to protest and exclusion from any further MB & YC events in 2019.

10 LIABILITY

Competitors and crews shall enter at their own risk. Neither Maui yacht & Yacht Club, its officers, board members, nor any of the organizing bodies, committees or individuals appointed to or volunteering for this race committee accepts any liability for damage, (material or personal) suffered during the race or at any other time. It shall be the sole responsibility of each competitor whether or not to start or continue to race..

AERIAL PHOTOS & Charts FOLLOW -----



**2018 Virtual Marks
The Big Picture**

Mark	Latitude	Longitude	Description
A	20 52.00 N	156 41.30 W	Black Mooring Ball
B	20 57.20 N	156 41.70 W	Honokowai Stream
C	21 01.10 N	156 39.00 W	Honolua
D	21 08.00 N	156 42.20 W	Mokuho'oniki Isl
E	21 01.90 N	156 52.50 W	Kamalo Entr Buoy
F	20 52.20 N	156 48.30 W	Lanai 1
G	20 48.50 N	156 46.90 W	Lanai 2
H	21 00.18 N	156 40.42 W	Hawea Point
J	20 58.30 N	156 44.40 W	Pailolo Offshore
W	20 51.76 N	156 42.72 W	2 miles off Lahaina Hbr
K	20 46.49 N	156 44.09 W	Auau Mid-Channel
LX	20 55.68 N	157 02.72 W	Lanai Finish

